



ELLIOTT ELECTRIC SUPPLY

We Deliver...Lower Cost, Quality Products, & Personal Service

3804 South Street
75964-7263, TX Nacogdoches
Phone: 936-569-7941
Fax: 936-560-4685



C296T8MV 8' Strip Light No Lamps

Lithonia Lighting

Catalog Number	C296T8MV
Manufacturer	Lithonia Lighting
Description	
Weight per unit	10.3 (lbs/each)
Product Category	Fluorescent Industrial Lightin

Features

dimensions	96 X 4-3/8 X 2-1/8 IN
Lamp Type	FLUORESCENT
Number of Lamps	2 in
pallet quantity	99 lbs./100ft

Material, Color, and Finish

Color	WHITE
-------	-------

Descriptions

Description	8' STRIP LIGHT NO LAMPS
Product Type	Strip Light
Special Features	Ideal where high brightness and good illumination levels are required such as retail, light industrial and warehouses.

Manufacturer Information

Brand	LITHONIA LIGHTING
GTIN	00745977076145
Manufacturers Part Number	C296T8 MV
UPC	745977076145

Taxonomies, Classifications, and Categories

Category Description	Fluorescent Fixtures & Accessories
Type	Strip Light

Packaging

Carton	1
Weight Per each	10.3

Uses, Certifications, and Standards

Application	Closet/Storage Room, Manufacturing, Retail
Mounting	Surface, Suspended
standard	cUL

FEATURES & SPECIFICATIONS

INTENDED USE

Ideal where high brightness and good illumination levels are required such as retail, light industrial and warehouses.

ATTRIBUTES

Fixture can be assembled with snap together components and requires no tools. Available in one lamp or two lamp configuration.

CONSTRUCTION

Heavy-duty channel, die-formed from Code-gauge steel.

Sturdy channel cover secured by captive quarter-turn latch for easy access to wireway.

Combination endplate/channel connector furnished with each fixture.

FINISH

Five-stage iron phosphate pretreatment ensures superior paint adhesion and rust resistance. Painted parts finished with high-gloss, baked white enamel.

ELECTRICAL SYSTEM

MVOLT ballasts are electronic, full light output-reduced energy. Less than 10% THD. Multi-volt operation, 120-277V.

120V ballasts are thermally protected, resetting, Class P, LPF, non-PCB, UL Listed, CSA Certified.

Rapid-start ballasts are sound rated A.

INSTALLATION

For unit or row installations, surface or suspended mounting.

LISTING

UL listed to US and Canadian safety standards. For use in damp locations. Optional: Mexico NOM.

WARRANTY

2-year limited warranty. Complete warranty terms located at www.acuitybrands.com/CustomerResources/Terms_and_conditions.aspx

NOTE: Actual performance may differ as a result of end-user environment and application. Specifications subject to change without notice.

Catalog Number
Notes
Type

Contractor Select

Strip Lights



C Specifications	Z1 Specifications	Z2 Specifications	S Specifications
Length: 24 (61.0)	Length: 24 (61.0)	Length: 24 (61.0)	Length: 18 (45.7)
36 (91.4)	36 (91.4)	36 (91.4)	24 (61.0)
48 (122.0)	48 (122.0)	48 (122.0)	36 (91.4)
72 (182.9)	96 (243.9)	96 (243.9)	48 (122.0)
96 (243.9)	Width: 2-1/4 (5.7)	Width: 2-1/4 (5.7)	Width: 2-3/4 (6.9)
Width: 4-3/8 (11.1)	Depth: 1-1/4 (3.1)	Depth: 1-1/4 (3.1)	Depth: 1-3/4 (4.4)
Depth: 2-1/8 (5.4)			

All dimensions are inches (centimeters).

ORDERING INFORMATION

Catalog Number	UPC	Description	# of Lamps	Length	Wattage	Voltage	Ballast Type	Lamp Included	Pallet Qty.	Standard Carton Qty.
C232 MV	745975079711	T8 general-purpose strip	2	48"	32	120-277	Electronic, instant start	N	99	1
TC232 MV	745975080809	T8 general-purpose strip	4	96"	32	120-277	Electronic, instant start	N	99	1
C225 MV	745975081219	T8 general-purpose strip	2	36"	25	120-277	Electronic, instant start	N	99	1
C217 MV	745975081493	T8 general-purpose strip	2	24"	17	120-277	Electronic, instant start	N	198	1
C296	745973789766	T12 general-purpose strip	2	96"	75	120	Electronic, rapid start	N	99	1
C296T8 MV	745977076145	T8 general-purpose strip	2	96"	75	120-277	Electronic, instant start	N	99	1
Z117 MV	745976682675	T8 low-profile strip	1	24"	17	120-277	Electronic, instant start	N	448	1
Z125 MV	745976682705	T8 low-profile strip	1	36"	25	120-277	Electronic, instant start	N	224	1
Z132 MV	745976682736	T8 low-profile strip	1	48"	32	120-277	Electronic, instant start	N	224	1
TZ132 MV	745976682767	Tandem, T8 low-profile strip	2	96"	32	120-277	Electronic, instant start	N	224	1
Z217 MV	745976682781	T8 low-profile strip	2	24"	17	120-277	Electronic, instant start	N	448	1
Z225 MV	745976682927	T8 low-profile strip	2	36"	25	120-277	Electronic, instant start	N	224	1
Z232 MV	745976682941	T8 low-profile strip	2	48"	32	120-277	Electronic, instant start	N	224	1
TZ232 MV	745976682989	Tandem, T8 low-profile strip	4	96"	32	120-277	Electronic, instant start	N	224	1

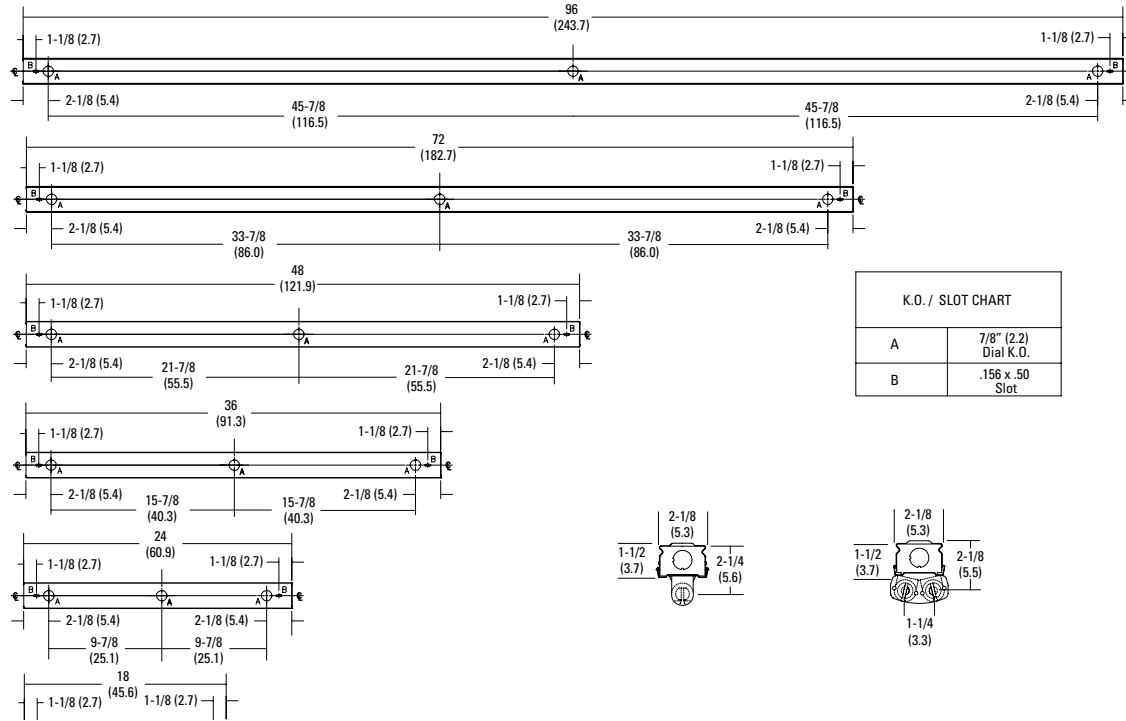
Strip Lights

DIMENSIONS

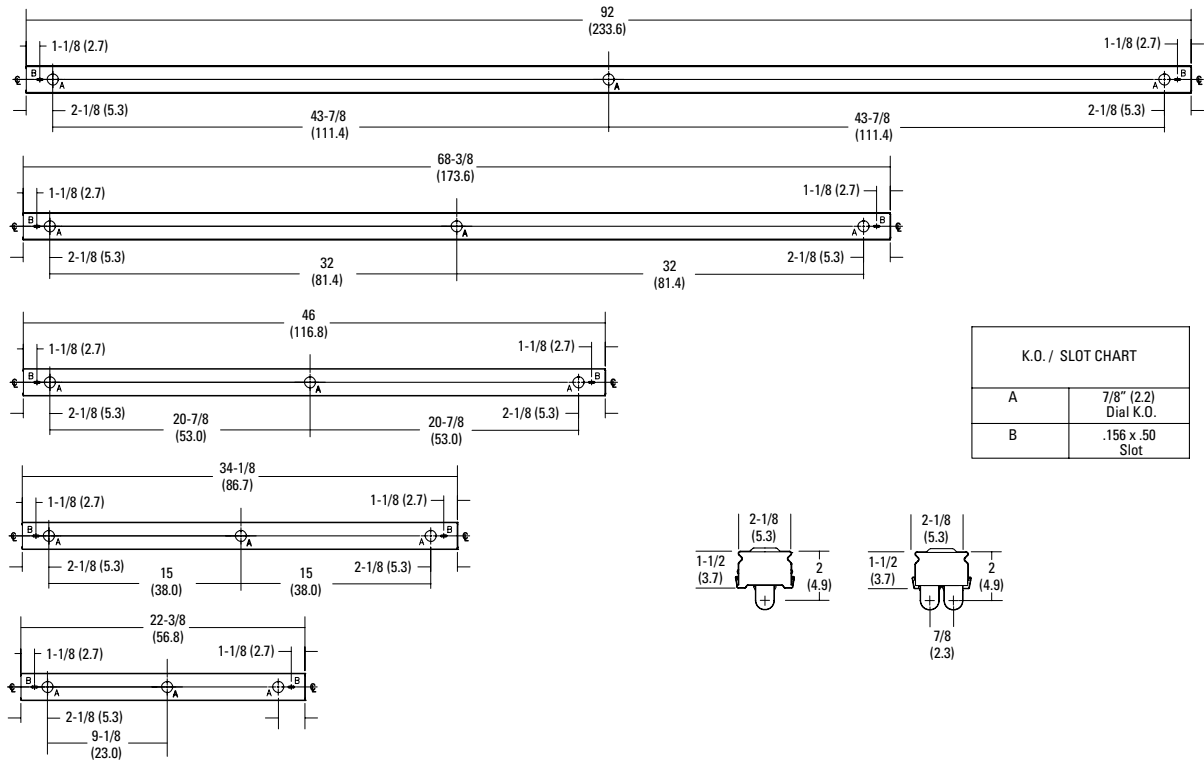
Inches (centimeters). Subject to change without notice.

Z STRIPS

T8 DIMENSIONS



T5 DIMENSIONS

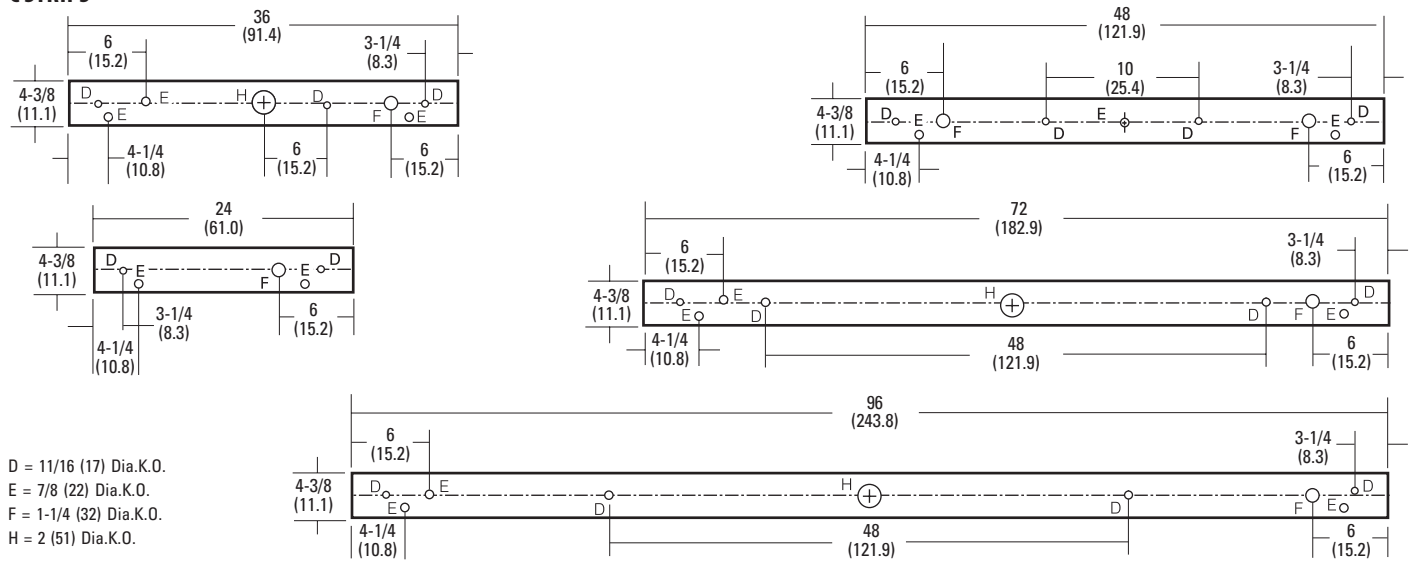


Strip Lights

DIMENSIONS (continued)

Inches (centimeters). Subject to change without notice.

C STRIPS



PHOTOMETRICS

See www.acuitybrands.com.