

## Compression Connectors

Designed for regular-duty applications.

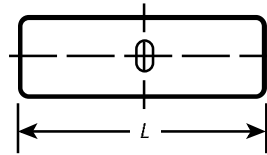
### Type CSP — Copper Splices, Short Barrel

#### Copper Compression Connectors

- For use with copper conductor: AWG stranded, flexible cable, welding cable and portable cord
- Specially designed for industrial and building applications
- Made of high-conductivity seamless copper tubing
- Tin plated for corrosion resistance
- Specially chamfered barrel for ease of installation
- Color coded for matching die identification
- Can be used for high-voltage application up to 35kV provided proper high-voltage insulation techniques are used
- UL® Listed for AWG conductor when installed with Blackburn®, Burndy®, T&B® or Anderson tools
- Comply with Subpart 111.60-17 of Federal Register's Coast Guard Electrical Engineering Rules and Regulations

#### Short-Barrel Connectors

- Designed for regular-duty applications
- Ideal for confined areas



| CAT. NO. | CONDUCTOR SIZE (CU) | LENGTH L (IN.) | DIE COLOR CODE |
|----------|---------------------|----------------|----------------|
| CSP8     | #8 Str. AWG         | 1              | RED            |
| CSP6     | #6 Str. AWG         | 1              | BLUE           |
| CSP4     | #4 Str. AWG         | 1              | GRAY           |
| CSP2     | #3-2 Str. AWG       | 1¼             | BROWN          |
| CSP1     | #1 Str. AWG         | 1½             | GREEN          |
| CSP10    | 1/0 Str. AWG        | 1¾             | PINK           |
| CSP20    | 2/0 Str. AWG        | 1¾             | BLACK          |
| CSP30    | 3/0 Str. AWG        | 1¾             | ORANGE         |
| CSP40    | 4/0 Str. AWG        | 1¾             | PURPLE         |
| CSP250   | 250 kcmil           | 2¼             | YELLOW         |
| CSP300   | 300 kcmil           | 2½             | WHITE          |
| CSP350   | 350 kcmil           | 2¼             | RED            |
| CSP400   | 400 kcmil           | 2¼             | BLUE           |
| CSP500   | 500 kcmil           | 2¼             | BROWN          |
| CSP600   | 600 kcmil           | 3              | GREEN          |
| CSP750   | 750 kcmil           | 3              | BLACK          |
| CSP1000  | 1000 kcmil          | 3¾             | N/A            |