

Caretaker
Area / Site Luminaire



Security made easy by design.

Superior illumination.
Low maintenance. Built to last.

The Caretaker LED area luminaire combines high performance, low maintenance and easy installation in a simple, extremely economic package that has been designed for years of worry-free operation. The Caretaker luminaire is ideal for pole or wall mounted security lighting, residential street lighting, perimeter area lighting, parking areas, loading platforms, boat docks, access drives or pathways.

Features and benefits

- Single heavy-duty die-cast housing for durability and low maintenance in security lighting applications
- Universal wall and wood pole mount bracket for ease of installation and numerous applications
- Integral slipfitter for mounting to pipe arm for versatility in mounting configuration
- High performance LED delivers up to 9,700 lumens and replaces up to 250W HID equivalents
- Precision molded optic designed to shape the distribution allowing maximum efficiency and application coverage
- Integrated light shield for full cutoff compliance to eliminate light pollution
- 3-PIN NEMA twist-lock photocontrol (included) provides automatic dusk-to-dawn operation for maximum energy savings
- 6kV integral surge protection device protects drivers and LED components



Standard

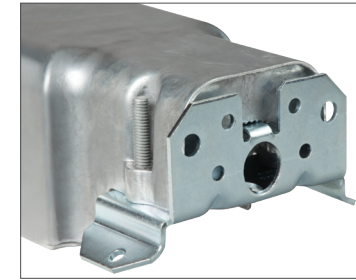
Energy and maintenance savings up to **89%** compared to HID

High-performance efficacy up to **155** lumens per watt

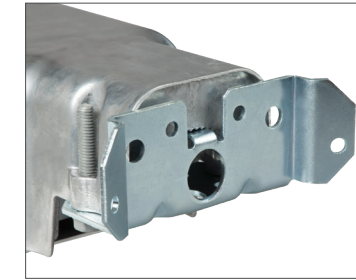


Small acrylic refractor

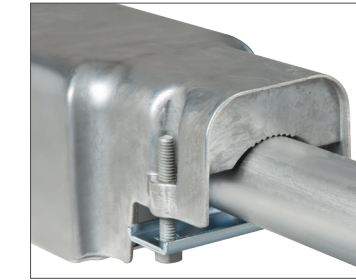
Design features



Wall / square pole mount



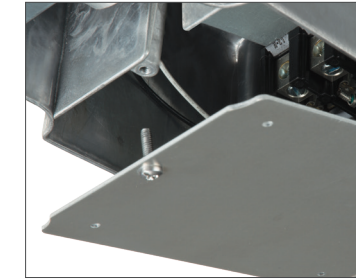
Wood pole mount



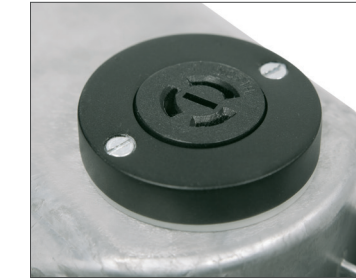
Pipe arm mount



Zero uplight shield

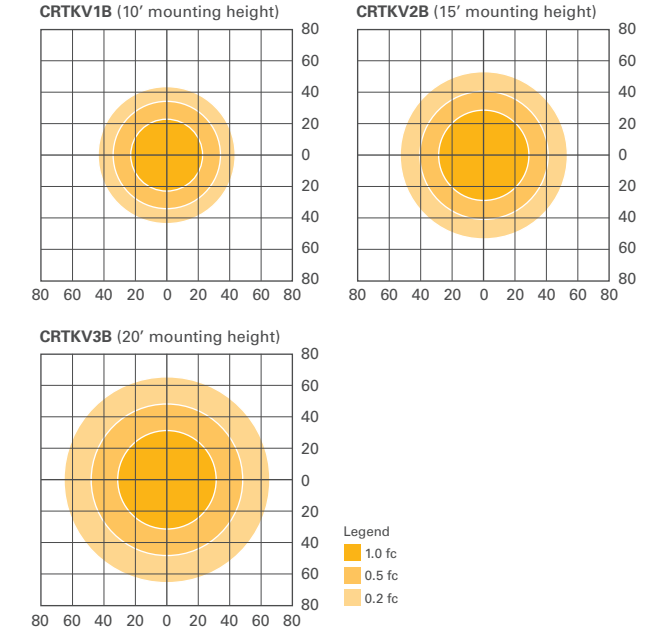


Single-point access



3-PIN NEMA receptacle

Photometrics



Technical specifications

STOCK SKUs

CTKRV1B
CTKRV2B
CTKRV3B

PERFORMANCE

Distributions: Type V symmetric round
Color temperature: 4000K / 70 CRI
Lumens: 4,515 / 7,110 / 9,741
Wattage: 29W / 50W / 71W
Efficacy: Up to 155 lm/W

ENERGY DATA

Minimum temperature: -40°C
Ambient temperature rating: 40°C
Operation: 120-277V 50/60Hz
Controls: 0-10V dimmable

WEIGHT

7 lbs. (3.2 kgs.)

ADDITIONAL INFORMATION

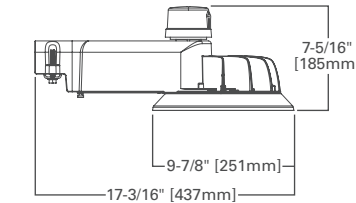
Warranty: 5 year
Vibration rated: 3G
UL/cUL listed: Wet location
IP rated: Yes (Optic)
ISO 9001: Certified
LM79/LM80: Compliant
RoHS: Compliant

ENERGY / MAINTENANCE SAVINGS

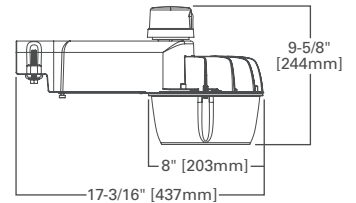
Annual savings: Up to 89% (compared to HID)

Dimensions

Full Cutoff (Standard)



Small Acrylic Refractor

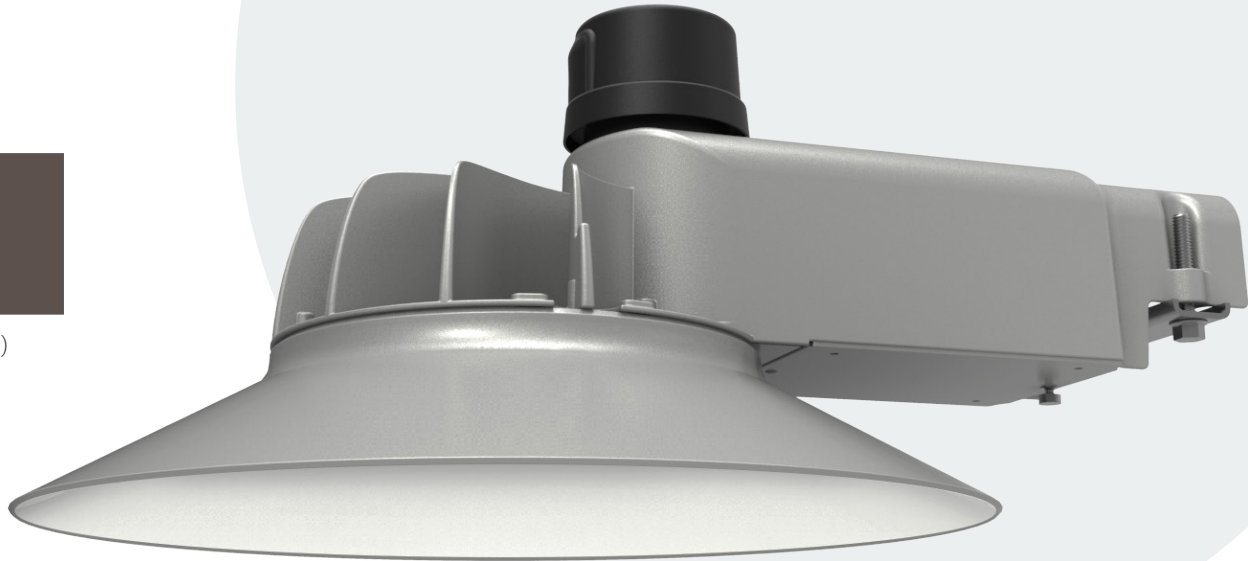
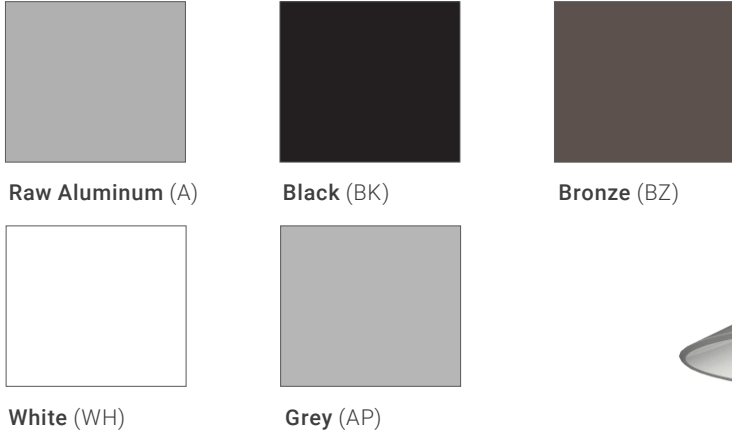


Product specifications subject to change without notice.
Visit cooperlighting.com to find the most up to date information.



Decorative Shield Options Hillbrook Hoods

Available Colors:



Unlit Fixtures:

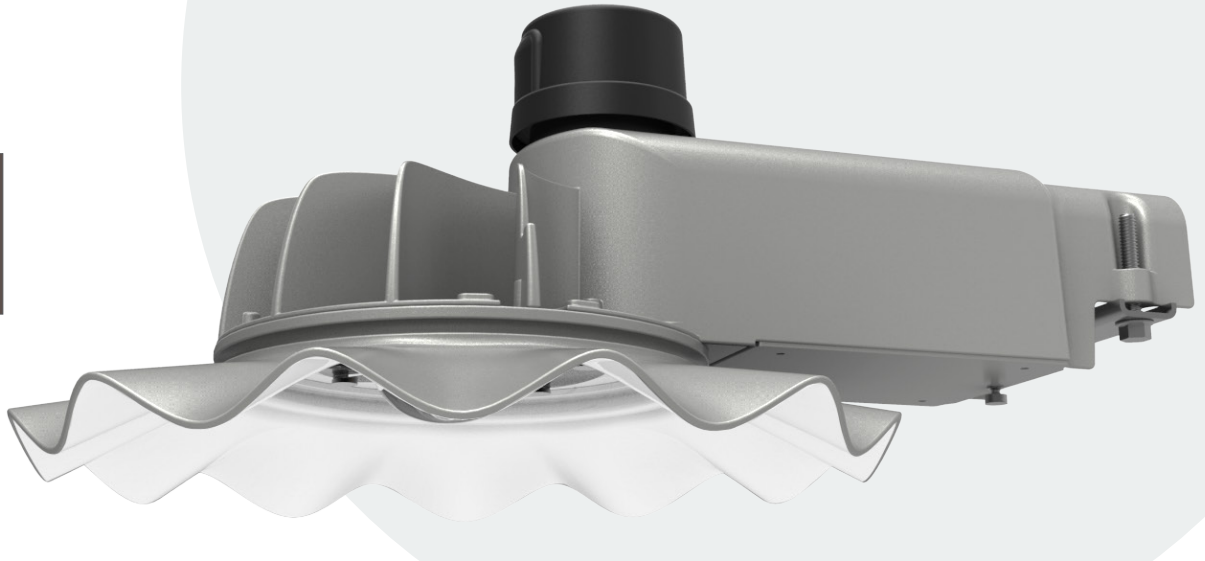
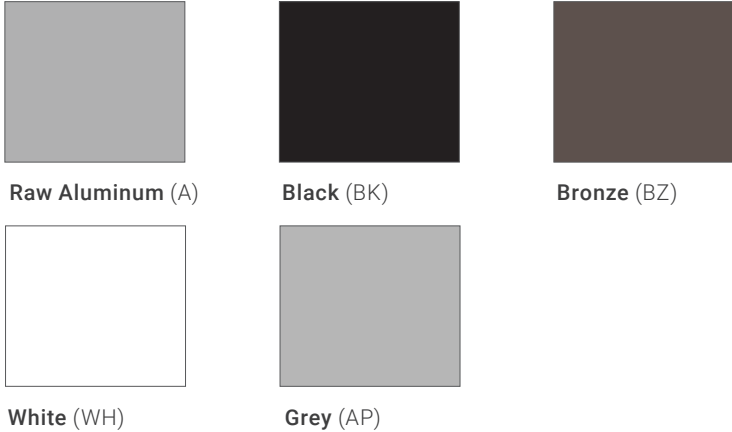


Lit Fixtures:



Decorative Shield Options RadioWave Hoods

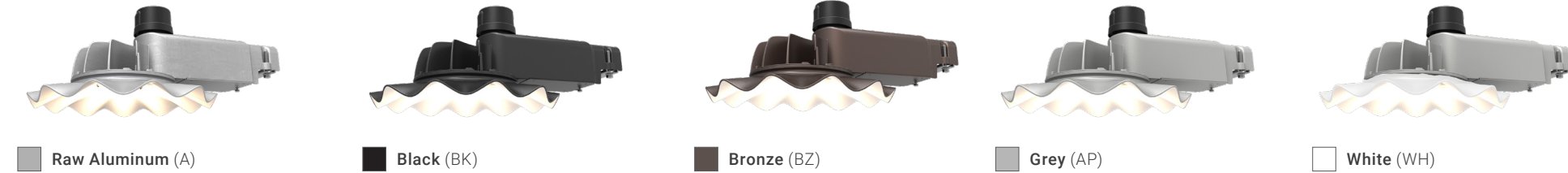
Available Colors:



Unlit Fixtures:



Lit Fixtures:



Lighting Product Lines

Ametrix
AtLite
Corelite
Ephesus
Fail-Safe
Halo
Halo Commercial
Invue
io
Iris
Lumark
Lumière
McGraw-Edison
Metalux
MWS
Neo-Ray
Portfolio
RSA
Shaper
Streetworks
Sure-Lites

Controls Product Lines

Fifth Light Technology
Greengate
iLight (International Only)
iLumin
Zero 88

Connected Lighting Systems

Distributed Low-Voltage Power
Halo Home
iLumin Plus
LumaWatt Pro
WaveLinx



Cooper Lighting Solutions
1121 Highway 74 South
Peachtree City, GA 30269
P: 770-486-4800
www.cooperlighting.com

Canada Sales
5925 McLaughlin Road
Mississauga, Ontario L5R 1B8
P: 905-501-3000
F: 905-501-3172

© 2021 Cooper Lighting Solutions
All Rights Reserved
Printed in USA
Publication No. BR500012EN
September 2021

Cooper Lighting Solutions is a registered trademark.

All other trademarks are property of their respective owners.

Product availability, specifications, and compliances are subject to change without notice.