

Description

The E27TAT is a compact and efficient shallow recessed Non-IC housing optimized and listed for EISA compliant tungsten-halogen, CFL and LED lamps as well as incandescent. Housing is suitable for residential or light commercial applications. For installation in non-insulated ceilings. If ceiling insulation is present, it must be kept 3" from all sides of housing. Housing features Air-Tite code compliant construction. Use with a variety of trims and finishes to create different lighting effects or to match any decor. May be retrofit with compatible HALO LED lighting systems.

| | | |
|--------------------|--|-------------|
| Catalog # | | Type |
| Project | | |
| Comments | | Date |
| Prepared by | | |

Specification Features

Housing

- Single wall die-formed shallow housing
- Housing features a precision rolled interlocking collar which maintains aperture geometry for greater assurance of installation results
- Integral Air-Tite gasket for code-required gasket between fixture and finished ceiling
- Shipped with socket overspray protector installed
- May be removed from the plaster frame to provide access to junction box

Socket Plate

- Rigid socket plate adjusts and locks without tools for various lamp sizes.
- Socket plate and bracket may be removed when using socket supporting trims.

Plaster Frame

- Galvanized steel frame. Housing adjusts in plaster frame to accommodate up to 3/8" - 1" ceiling thickness.
- Regressed locking screw for securing hanger bars
- Integral Air-Tite gasket seals housing and meets code-required gasket between fixture and finished ceiling

Includes:

Bar Hangers

All Nail!™

- Integral precisely positioned nail for engineered and natural framing
- Mini-foot leveling flange
- Integral T-Grid Clip, no accessory clips required

q-Channel bars with Pass-N-Thru™

- Unique inverted "q" interlocking channel for rigidity and stability
- Pass-N-Thru™ feature allows bars to cross-over for tool-less shortening in tight spaces

Hinged junction box w/

Slide-N-Side™

- (4) 1/2" conduit pry-outs
- (3) Slide-N-Side™ Non-Metallic (NM) wire traps, allow wiring outside the box
- For 14-2, 14-3, 12-2, 12-3 U.S. and 14-2, 14-3, 12-2 Canadian
- Hinged door for easy access
- Box is repositionable 90° on frame to avoid obstructions

Quick Connect™

- (3) Push wire nuts included, for speed & reliability
- Clear caps for wire connection visibility

cULus Listed

- Compact 16 in3 volume
- Listed for max. (10) No. 12 AWG or (14) No. 14 AWG 90° C splice conductors in box

Air-Tite™ code compliant

- Certified under ASTM E283
- Exclusive gasket seals aperture, frame & ceiling

Socket

- Porcelain socket with nickel plated brass screw shell
- Snap-in springs secure socket to socket plate, and may be detached when using socket supporting trims

Thermal Protector

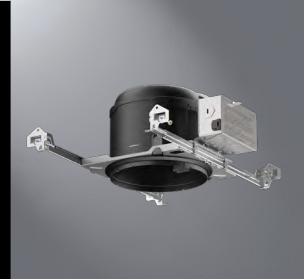
- Self resetting thermal protector deactivates fixture if overheating occurs due to improper lamping or misapplied insulation.

Trims

- Halo Fit-All concept offers multiple trim options in a variety of design styles, and functional beam distributions to control beam angle and lumen delivery in accommodating various lamp types including Halogen, CFL and LED

Compliance

- cULus Listed 1598 Luminaire
- cULus Listed Damp Location
- cULus Listed for Wet Location, covered ceiling, with select trims
- Air-Tite code compliant. Certified under ASTM E283; not exceeding 2.0 cfm (0.944 L/s) air leakage rate tested at a 1.57 psf (75 Pa) pressure differential
- RoHS compliant
- Options to meet Trade Agreements Act requirements

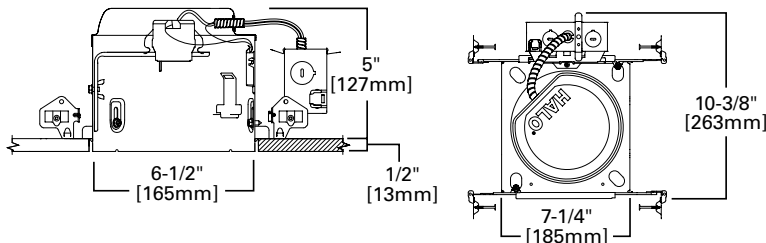


E27TAT

6" Non-IC, Air-Tite, Shallow New Construction Housing

E26 Screw base housing

Dimensions



Special Features

- All-Nail!™ bar hangers
- q-Channel bars with Pass-N-Thru™
- Hinged J-Box with Slide-N-Side™
- Quick Connect™ push wire nuts
- Air-Tite™ code compliant

Ordering Information

Sample Number: E27TAT 6110WB
Order housing, trim and lamp (by others) separately for a complete luminaire.

Domestic Preferences⁽¹⁾

[Blank] = Standard
TAA = Trade Agreements Act

Housing

E27TAT= 6" non-insulated ceiling, airtight recessed housing, shallow new construction, 120V

Trims

| Reflectors | Housing | Lenses & Wet Location Showerlights |
|---|---|---|
| 426 Reflector Cone OD: 7-1/4" [184mm] 426=Clear Specular Reflector Cone, White Trim 426MB=Black Specular Reflector Cone, White Trim 426H=Haze Reflector Cone, White Trim 426SN=Satin Nickel Reflector Cone and Trim 426TBZ=Tuscan Bronze Reflector Cone and Trim | 6109 Coilex® Tapered Baffle, Self-flange OD: 7-3/4" [197mm] 6109WB=White Tapered Coilex Baffle, White Trim 6109BB=Black Tapered Coilex Baffle, White Trim 6109BKBB=Black Perfex Baffle, Black Trim | 70 Albalite Lens OD: 8" [203mm] 70P=Albalite Glass Lens, White Plastic Trim 70PS=Albalite Glass Lens, White Plastic Trim, Showerlight, Air-Tite |
| 4261 White Reflector Cone, Self-flange OD: 7-1/4" [184mm] 4261P=White Reflector and Trim | 6110 Perfex Baffle, Self-flange OD: 7-3/4" [197mm] 6110WB=White Perfex Baffle and Trim 6110BB=Black Perfex Baffle, White Trim 6110BKBB=Black Perfex Baffle and Trim | 71 Drop Opal Glass Lens OD: 8" [203mm] 71P=Drop Opal Glass Lens, White Plastic Trim 71PS=Drop Opal Glass Lens, White Plastic Trim, Showerlight, Air-Tite |
| 6106 Straight Reflector Cone, Self-flange OD: 7-3/4" [197mm] 6106SC=Specular Reflector, White Trim | 6126 Shallow Full Cone Baffle, Self-flange OD: 7-3/4" [197mm] 6126WB=White Baffle and Trim 6126BB=Black Baffle, White Trim | 73 Fresnel Glass Lens OD: 8" [203mm] 73P=Fresnel Glass Lens, White Plastic Trim 73PS=Fresnel Glass Lens, White Plastic Trim, Showerlight, Air-Tite |
| 6107 Tapered Reflector, Self-flange OD: 7-3/4" [197mm] 6107SC=Specular Reflector, White Trim | Adjustable - Eyeballs & Gimbals | 170 Albalite Lens with Reflector OD: 8" [203mm] 170P=Frosted Albalite Glass Lens, White Trim 170PS=Frosted Albalite Glass Lens, White Plastic Trim, Showerlight, Air-Tite |
| 6121 Shallow Full Cone Reflector, Self-flange OD: 7-3/4" [197mm] 6121WH=White Reflector and Trim | 74 PAR30 Eyeball 30° Tilt, Self-flange OD: 8" [203mm] 74P=White Eyeball and Trim | 171 Drop Opal Lens with Reflector OD: 8" [203mm] 171P=Drop Opal Glass Lens, White Trim 171PS=Drop Opal Glass Lens, White Plastic Trim, Showerlight, Air-Tite |
| Baffles | 78 BR/PAR30 Eyeball 30° Tilt, Self-flange OD: 8" [203mm] 78P=White Eyeball and Trim 78PAT=White Eyeball and Trim, Air-Tite 78SN=Satin Nickel Eyeball and Trim 78TBZ=Tuscan Bronze Eyeball and Trim | 172 Dome Lens with Reflector OD: 7-3/4" [197mm] 172PS=Frosted Glass Dome, White Plastic Trim 172SNS=Frosted Glass Dome, Satin Nickel Plastic Trim 172TBZS=Frosted Glass Dome, Tuscan Bronze Plastic Trim |
| 310 Coilex® Baffle OD: 7-1/4" [184mm] 310W=White Coilex Baffle and Trim 310P=Black Coilex Baffle, White Trim 310SN=Black Coilex Baffle, Satin Nickel Trim 310TBZ=Black Coilex Baffle, Tuscan Bronze Trim | 376 PAR30 Regressed Gimbal 30° Tilt, Self-flange OD: 7-1/4" [184mm] 376W=White Baffle and Trim 376P=Black Baffle and White Trim | 173 Fresnel Lens with Reflector OD: 8" [203mm] 173P=Fresnel Glass Lens, White Trim 173PS=Fresnel Glass Lens, White Plastic Trim, Showerlight, Air-Tite |
| 312 Coilex® Baffle OD: 7-1/4" [184mm] 312W=White Coilex Baffle and Trim 312P=Black Coilex Baffle, White Trim | 378 PAR30 Regressed Gimbal with Splay 25° Tilt, Self-flange OD: 7-1/4" [184mm] 378P=White Splay and Trim 378=Clear Specular Splay and White Trim | 6145 Open Wet Location, Shallow Reflector, Self-flange* OD: 7-3/4" [197mm] 6145WH=White Reflector and Trim 6145SN=Satin Nickel Reflector and Trim 6145TBZ=Tuscan Bronze Reflector and Trim |
| 353 Metal Baffle OD: 7-1/4" [184mm] 353SN=Satin Nickel Baffle and Trim 353TBZ=Tuscan Bronze Baffle and Trim | 419 Regressed Eyeball with Splay 25° Tilt OD: 7-1/4" [184mm] 419P=White Eyeball and Splay, White Trim | 6150 Frost Curve Glass Lens, Self-flange OD: 7-3/4" [197mm] 6150WH=Frost Curve Glass Lens with Reflector, White Plastic Trim 6150SN=Frost Curve Glass Lens with Reflector, Satin Nickel Plastic Trim 6150TBZ=Frost Curve Glass Lens with Reflector, Tuscan Bronze Plastic Trim |
| 6100 Tapered Metal Baffle with (2) Trim Rings OD: 7-1/8" [181mm] 6100WB=White Baffle, Narrow and Wide White Trims (included) 6100BB=Black Baffle, Narrow and Wide White Trims (included) | 420 BR/PAR30 Regressed Eyeball 30° Tilt, Self-flange OD: 7-1/4" [184mm] 420W=White Eyeball, Baffle and Trim 420P=White Eyeball, Black Baffle, White Trim | 6160 Drop Opal Plastic Lens, Self-flange OD: 7-3/4" [197mm] 6160WH=Drop Opal Plastic Lens, White Plastic Trim |
| 6101 Straight Metal Baffle with (2) Trim Rings OD: 7-1/8" [181mm] 6101WB=White Baffle, Narrow and Wide White Trims (included) 6101BB=Black Baffle, Narrow and Wide White Trims (included) | 6130 BR/PAR30 Eyeball 35° Tilt, Self-flange OD: 7-3/4" [197mm] 6130WH=White Eyeball and Trim | |
| 6102 Tapered Metal Baffle, Self-flange OD: 7-3/4" [197mm] 6102WB=White Baffle and Trim 6102BB=Black Baffle, White Trim | 6215 PAR30 Double Gimbal 35°-50° Tilt, Self-flange OD: 7-3/4" [197mm] 6215WH=White Gimbal and Trim 6215BK=Black Gimbal and Trim 6215SN=Satin Nickel Gimbal and Trim 6215TBZ=Tuscan Bronze Gimbal and Trim | |
| 6103 Straight Metal Baffle, Self-flange OD: 7-3/4" [197mm] 6103WB=White Baffle and Trim 6103BB=Black Baffle, White Trim | 6222 Regressed PAR30 Adjustable 35° Tilt, Self-flange OD: 7-3/4" [197mm] 6222WB=White Baffle and Trim 6222BB=Black Baffle and Trim 6222SC=Specular Clear Reflector, White Trim 6222H=Haze Reflector, White Trim | |
| 6108 Coilex® Straight Plastic Baffle, Self-flange OD: 7-3/4" [197mm] 6108WB=White Plastic Straight Coilex Baffle, White Trim 6108BB=Black Plastic Straight Coilex Baffle, White Trim 6108BKBB=Black Plastic Straight Coilex Baffle, Black Trim | | |

Notes: (1) Only product configurations with this designated prefix are built to be compliant with the Trade Agreements Act of 1979 (TAA). Please refer to [DOMESTIC PREFERENCES](#) website for more information. Components shipped separately may be separately analyzed under domestic preference requirements. Accessories sold separately will be separately analyzed under domestic preference requirements. Consult factory for further information.

*Outdoor rated lamp only (purchase separately)



Ordering Information

Sample Number: E27TAT 6110
Order housing, trim and lamp (by others) separately for a complete luminaire.

Domestic Preferences⁽¹⁾

[Blank] = Standard
TAA = Trade Agreements Act

Housing

E27TAT= 6" insulated ceiling, airtight recessed housing, new construction, no socket bracket, 120V

Trims

Lenses & Wet Location Showerlights

6230 Squircle Frost Glass Lens, Metal Trim - Showerlight

OD: 7-1/4" [183mm]



6230AH=Frost Glass Lens, Aluminum Haze Squircle Trim

6230PN=Frost Glass Lens, Polished Nickel Squircle Trim

6230SN=Frost Glass Lens, Satin Nickel Squircle Trim

6230TBZ=Frost Glass Lens, Tuscan Bronze Squircle Trim

6255 Soft Square, Frost Curve Glass Lens, Self-flange - Showerlight

OD: 7-1/4" [183mm]



6255WH=Frost Lens with Reflector, White Plastic Trim

6255SN=Frost Lens with Reflector, Satin Nickel Plastic Trim

6255TBZ=Frost Lens with Reflector, Tuscan Bronze Plastic Trim

Open, Splay & Wall Wash

79 Pinhole Trim

OD: 8" [203mm]

79=Pinhole White Trim



301 Open Trim

OD: 7-1/4" [183mm]

301P=White Open Trim

301SN=Satin Nickel Open Trim

301TBZ=Tuscan Bronze Open Trim



328 White Splay Trim

OD: 7-3/4" [197mm]

328P=White Splay Trim



Notes: (1) Only product configurations with this designated prefix are built to be compliant with the Trade Agreements Act of 1979 (TAA). Please refer to [DOMESTIC PREFERENCES](#) website for more information. Components shipped separately may be separately analyzed under domestic preference requirements. Accessories sold separately will be separately analyzed under domestic preference requirements. Consult factory for further information.

*Outdoor rated lamp only (purchase separately)