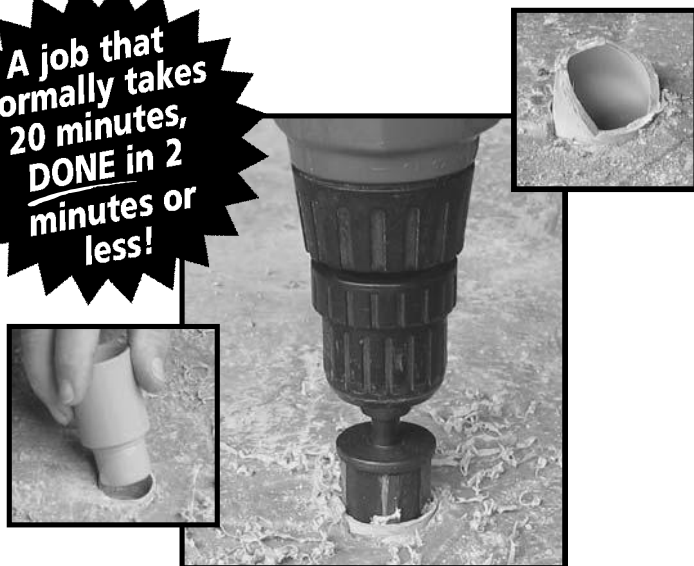


Carlton PVC Conduit Repair System

The new, revolutionary, patented design Carlton PVC Conduit Repair System significantly reduces the time and money associated with repairing broken PVC conduits a.k.a. "stub-ups" in concrete slabs.

The system is a line of couplings, adapters, reamers and plugs designed to allow contractors to quickly and easily repair broken PVC conduits without having to chip-away and re-pour concrete, while still maintaining the inside diameter of the conduit. Simply cut off the broken conduit; ream the ID of the conduit; and insert a coupling or adapter, it's that easy. A job that normally takes 20 minutes can now be done in 2 minutes or less!

A job that normally takes 20 minutes, DONE in 2 minutes or less!

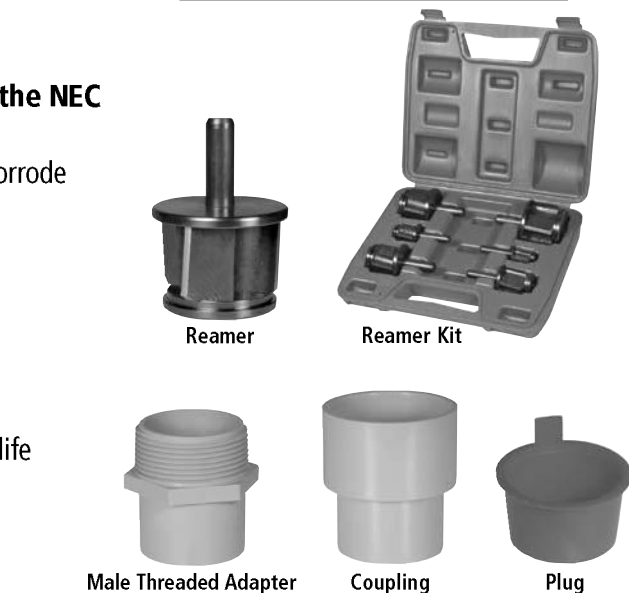


Features:

- **C-UL-US Listed**
- **PVC Repair Fittings are listed in accordance with the NEC and Section 352.6**
- Nonmetallic couplings, adapters and plugs won't rust or corrode
- Available in sizes 1/2" through 2"
- Patented designed system

Benefits:

- **Saves time and money**
- Maintains inside diameter of conduit
- Metallic Reamers for extra strength, durability and longer life
- Quickly and easily repair broken PVC conduits



Specifications

Couplings

Part No.	Trade Size	Std. Ctn. Qty.
E910D	1/2"	25
E910E	3/4"	25
E910F	1"	15
E910G	1 1/4"	10
E910H	1 1/2"	10
E910J	2"	10

Male Threaded Adapters

Part No.	Trade Size	Std. Ctn. Qty.
E920D	1/2"	25
E920E	3/4"	25
E920F	1"	15
E920G	1 1/4"	10
E920H	1 1/2"	10
E920J	2"	10

Reamers

Part No.	Size	Std. Ctn. Qty.
E910REAMD	1/2"	12
E910REAME	3/4"	12
E910REAMF	1"	10
E910REAMG	1 1/4"	10
E910REAMH	1 1/2"	10
E910REAMJ	2"	10
E910REAMKIT	All sizes - 1/2", 3/4", 1", 1 1/4", 1 1/2", and 2"	5

Schedule 40 Plugs

Part No.	Size	Color	Part No.	Size	Color	Part No.	Size	Color	Std. Ctn. Qty.
HL-6XR	1/2"	Red	HL-6XB	1/2"	Blue	HL-6XY	1/2"	Yellow	1 Bag of 50
HL-10R	3/4"	Red	HL-10B	3/4"	Blue	HL-10Y	3/4"	Yellow	1 Bag of 50
HL-13AR	1"	Red	HL-13AB	1"	Blue	HL-13AY	1"	Yellow	1 Bag of 50
HL-16R	1 1/4"	Red	HL-16B	1 1/4"	Blue	HL-16Y	1 1/4"	Yellow	1 Bag of 50
HL-18R	1 1/2"	Red	HL-18B	1 1/2"	Blue	HL-18Y	1 1/2"	Yellow	1 Bag of 50
HL-21R	2"	Red	HL-21B	2"	Blue	HL-21Y	2"	Yellow	1 Bag of 50

Carlton PVC Conduit Repair System - Installation

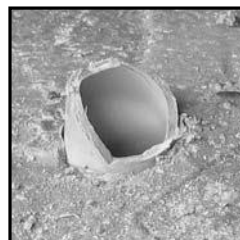
PVC Conduit Repair Fittings



Coupling
E910_



Male Threaded
Adapter
E920_

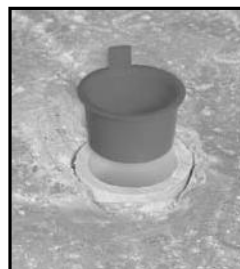


Broken
conduit
on jobsite

Instructions:



1. Cut broken conduit off flush



2. Insert plug to keep conduit clean/dry through balance of rough-in. Once rough-in is complete, remove plug and continue with step 3.

Alternative to Conduit Repairs:

Prior to concrete pour, measure and saw cut all conduit stub-ups to the thickness of the concrete pour. Insert plugs. Pour concrete flush to the conduit. When pour is complete, remove plugs and proceed with STEP 3. This alternative method saves time/money by eliminating the need for transitions or use of metal elbows.



3. With reamer tool and standard 1/2" drill, ream I.D. of conduit. It is recommended to use a variable speed drill. Use slower speed to avoid overheating the conduit.



4. The guide will direct the cutter; the stop will touch when completed.

5. Insert the coupling and cement into place using the cement manufacturer's instructions.

Cementing Instructions:

- A. Clean socket I.D. and spigot O.D. of dirt and moisture.
- B. Apply a uniform coat of cement to spigot end and push onto socket bottom, rotating 1/4 turn.
- C. Allow time to set before disturbing. This will depend upon temperature.



Apply a uniform coat of cement.



Insert fitting.



Rotate 1/4 turn.