

Switch and junction boxes

Molded non-metallic junction boxes – 6P rated

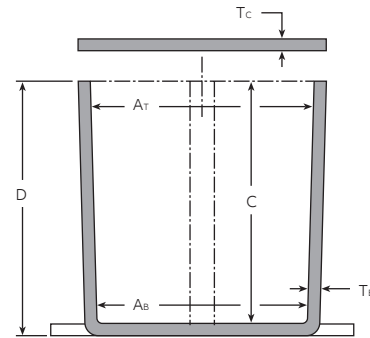
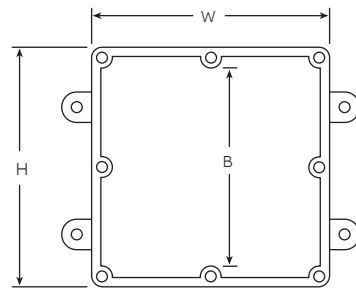
Non-metallic junction boxes are UL Listed with a NEMA 6P rating per Section 314.29, Exception of the National Electrical Code® and CSA Certified per Section 12 of the Canadian Electrical Code. Manufactured from PVC or PPO thermoplastic molding compound and featuring foam in-place gasketed lids attached with stainless steel screws, these rugged enclosures offer all the corrosion resistance and physical properties you need for direct-burial applications.

Type 6P enclosures are intended for indoor or outdoor use, primarily to provide a degree of protection against contact with enclosed equipment, falling dirt, hose-directed water, entry of water during prolonged submersion at a limited depth and external ice formation.

Features and benefits:

- All Carlon® Junction Boxes are UL Listed/CSA Certified and maintain a minimum of a NEMA Type 4/4X Rating
- Part numbers with an asterisk (*) are UL Listed and maintain a NEMA Type 6P Rating and Type 4/4X Rating
- Covers are not sold as separate item
- Temperature Range: -250° F to 125° F
- UL94V-2 flammability rating

Note: Not rated for pedestrian traffic.



Molded non-metallic junction boxes – 6P rated

| Cat. No. | Size H x W x D (in.) | Std. Ctn. | Dimensions (in.) | | | | | Material | | | Std. Wt. |
|--------------|----------------------------|--------------|----------------------------------|--------------------------------|---------------------------------|-----------|----------------|----------------|-----|--------------------|-------------|
| | | | Min. AT | Min. AB | Min. B | Min. C | T _B | T _C | PVC | Thermo- plastic | |
| E989NNJ* | 4 x 4 x 2 | 10 | 3 ¹¹ / ₁₆ | 3 ⁵ / ₈ | N/A | 2 | 0.160 | 0.155 | X | | 3 |
| E987N* | 4 x 4 x 4 | 10 | 3 ¹¹ / ₁₆ | 3 ¹ / ₂ | N/A | 4 | 0.160 | 0.155 | X | | 4 |
| ▶ E989NNR* | 4 x 4 x 6 | 10 | 3 ¹¹ / ₁₆ | 3 ³ / ₈ | N/A | 6 | 0.160 | 0.200 | X | | 5 |
| E989PPJ* | 5 x 5 x 2 | 10 | 4 ¹¹ / ₁₆ | 4 ¹ / ₂ | N/A | 2 | 0.110 | 0.150 | | X | 3 |
| E987R-CAR* | 6 x 6 x 4 | 2 | 6 | 5 ⁵ / ₈ | N/A | 4 | 0.190 | 0.190 | | X | 3 |
| E989RRR-UPC* | 6 x 6 x 6 | 8 | 5 ⁵ / ₈ | 5 ³ / ₈ | N/A | 6 | 0.160 | 0.150 | | X | 14 |
| E989N-CAR | 8 x 8 x 4 | 1 | 8 | 8 | N/A | 4 | 0.185 | 0.190 | | X | 2 |
| E989SSX-UPC | 8 x 8 x 7 | 2 | 7 ²¹ / ₃₂ | 7 ⁵ / ₁₆ | N/A | 7 | 0.160 | 0.150 | | X | 6 |
| E989UUN | 12 x 12 x 4 | 3 | 11 ⁵ / ₈ | 11 ¹ / ₂ | 11 ¹ / ₈ | 4 | 0.160 | 0.150 | | X | 12 |
| E989R-UPC | 12 x 12 x 6 | 2 | 11 ¹⁵ / ₁₆ | 11 ⁷ / ₈ | 11 ⁷ / ₁₆ | 6 | 0.265 | 0.185 | | X | 10 |

*Gaskets are FIP (foam in place).