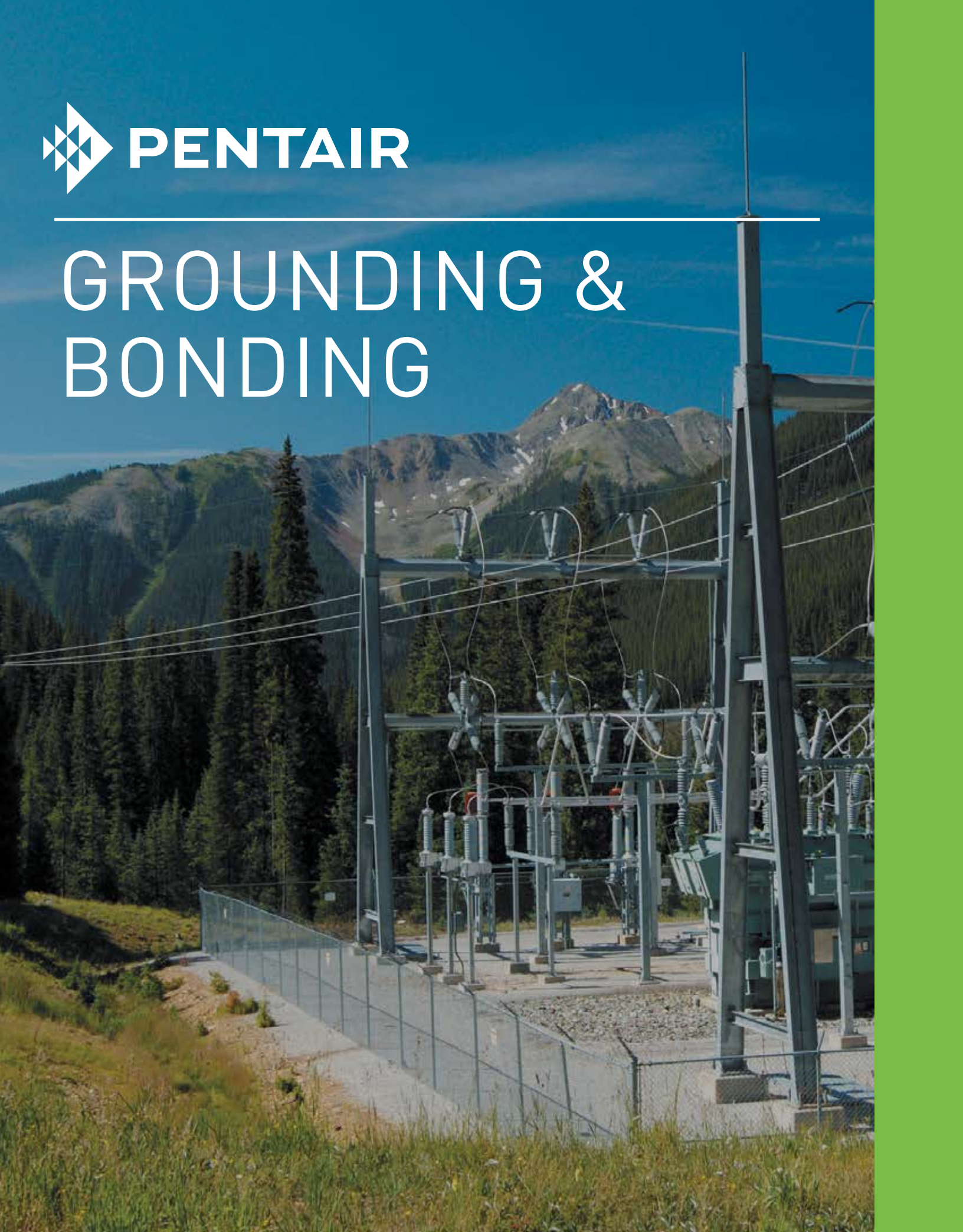
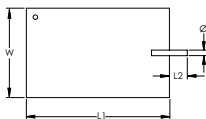
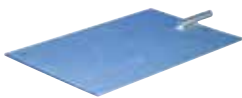




GROUNDING & BONDING



Steel Ground Plate



Featured Highlights

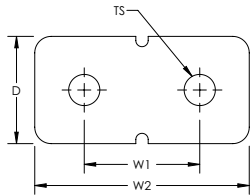
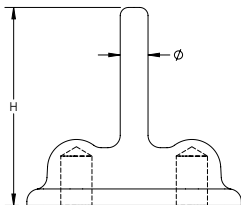
- Provides a large surface area to dissipate current into the ground
- Includes a welded steel rod pigtail

Material: Steel



Part Number	Connector	Length 1	Length 2	Width	Thickness	Diameter	Certifications
Finish: Electrogalvanized							
EGGP	None	16"	2"	10"	1/4"	5/8"	C-CSA-US
EGGPC	HDC58	16"	2"	10"	1/4"	5/8"	C-CSA-US
Finish: Plain							
EBGP	None	16"	2"	10"	1/4"	5/8"	

B162 Earthpoint, Two Stud



Featured Highlights

- Long-lasting design
- Low ground resistance and impedance
- Superior electrical conductivity and resistance to corrosion
- Electrically and mechanically robust and reliable
- Easy to install as a Prefabricated Earthbridge once ERICO CADWELD welded to a piece of conductor

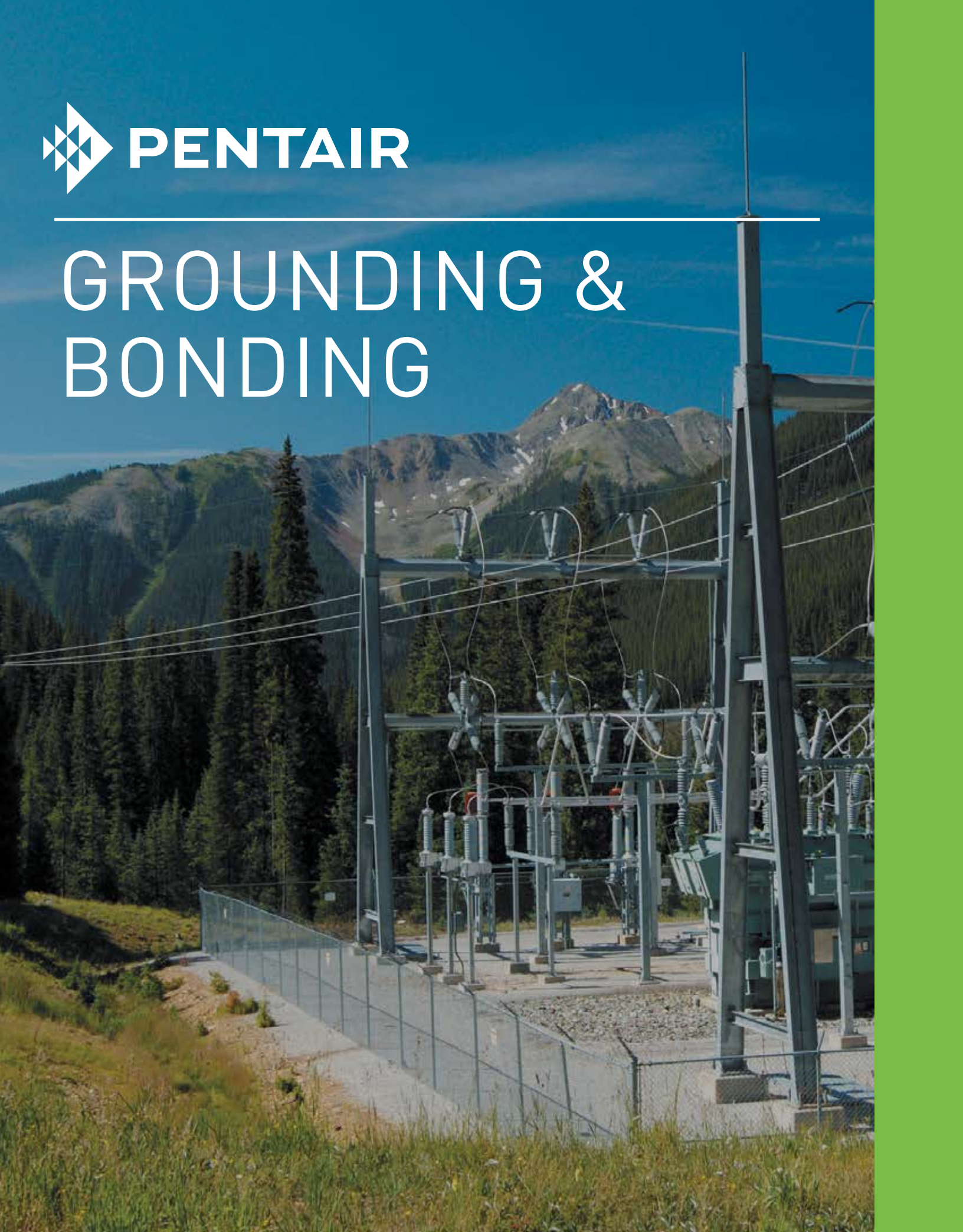
Material: Brass

Part Number	Width 1	Width 2	Depth	Height	Diameter	Thread Size
B1622Q	1 3/4"	3 1/4"	1 5/8"	3"	0.53"	1/2 UNC

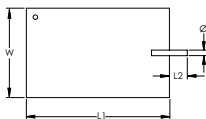
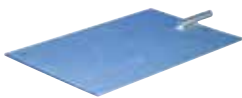
Assemblies require conductors and ERICO CADWELD connections, which must be ordered separately.



GROUNDING & BONDING



Steel Ground Plate



Featured Highlights

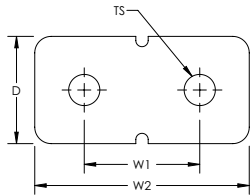
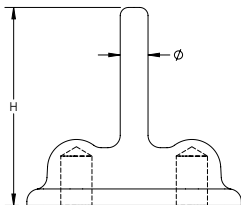
- Provides a large surface area to dissipate current into the ground
- Includes a welded steel rod pigtail

Material: Steel



Part Number	Connector	Length 1	Length 2	Width	Thickness	Diameter	Certifications
Finish: Electrogalvanized							
EGGP	None	16"	2"	10"	1/4"	5/8"	C-CSA-US
EGGPC	HDC58	16"	2"	10"	1/4"	5/8"	C-CSA-US
Finish: Plain							
EBGP	None	16"	2"	10"	1/4"	5/8"	

B162 Earthpoint, Two Stud



Featured Highlights

- Long-lasting design
- Low ground resistance and impedance
- Superior electrical conductivity and resistance to corrosion
- Electrically and mechanically robust and reliable
- Easy to install as a Prefabricated Earthbridge once ERICO CADWELD welded to a piece of conductor

Material: Brass

Part Number	Width 1	Width 2	Depth	Height	Diameter	Thread Size
B1622Q	1 3/4"	3 1/4"	1 5/8"	3"	0.53"	1/2 UNC

Assemblies require conductors and ERICO CADWELD connections, which must be ordered separately.