



## EI4700, EI4700AT

6" Aperture Slope Ceiling, New Construction, IC, AIR-TITE (EI4700AT)  
120V Line Voltage

Designed for sloped ceiling installations for ceilings from 2/12 to 6/12 pitch. The socket aiming mechanism allows the lamp to be aimed straight down regardless of ceiling pitch. For direct contact with insulation. In addition, EI4700AT design meets restricted airflow requirements.



### FEATURES

#### HOUSING

- EI4700AT Housing is AIR-TITE with gasket pre-installed.
- Double wall housing construction. Door in outer housing allows junction box access from below ceiling.
- Exclusive socket aiming mechanism swivels and rotates to properly align lamp. Slope indicator provides quick and consistent lamp settings (factory set for 3/12 slope).
- Integral thermal protector guards against improper lamping.

#### JUNCTION BOX

- Positioned to accommodate straight conduit runs.
- Seven conduit knockouts are uniform 1/2" size with true pryout slots.
- Four pryouts with integral strain relief simplify "NM" non-metallic sheathed cable installation.
- Three quick connect wire connectors included.

#### ALL-NAIL™ BAR HANGERS

Bar Hanger features include:

- Pre-installed nail.
- Mini leveling foot aligns the housing to the bottom of the joist.
- Housing can be positioned at any point within 24" joist spans
- Score lines allow tool-free shortening for narrow joist spacing.
- Bar hangers may be repositioned 90° on plaster frame
- Integral T-bar clip snaps onto T-bars – no additional clips are required

#### LABELS

- UL/cUL Listed 1598 Luminaire
- UL/cUL Listed for Damp Location
- UL/cUL Listed for Feed Through
- UL/cUL Listed for Wet Location, covered ceiling
- UL/cUL Listed for Direct Contact with Insulation and combustible material

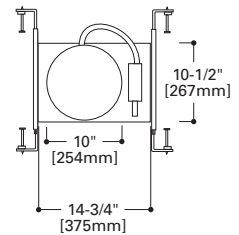
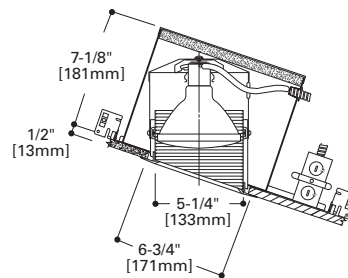
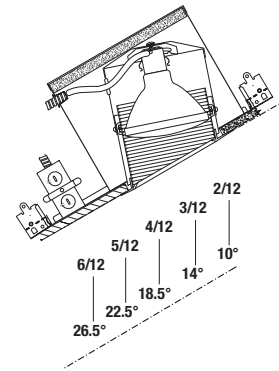
#### QUALIFICATION - EI4700AT

##### IC and AIR-TITE™

Certified under ASTM-E283 and listed UL/cUL 1598. May be used to meet insulated ceiling and restricted air-flow requirements such as:

- Washington State Energy Code
- International Energy Conservation Code (IECC)
- New York State Energy Conservation Construction Code (NY-ECCC)
- State of California Title 24 "Recessed Luminaires in Insulated Ceilings."

#### PITCH TO DEGREE CONVERSION

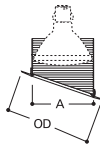


## ERT4980

### Baffle

- One piece seamless baffle
- Baffle ridges are parallel to floor plane

EI4700	90W PAR38
EI4700AT	



Aperture: 5-1/4" [133mm]  
OD: 8" [203mm]



**ERT4980WH T**  
High Gloss Appliance White Trim  
with White Baffle



**ERT4980**  
High Gloss Appliance White Trim  
with Black Baffle