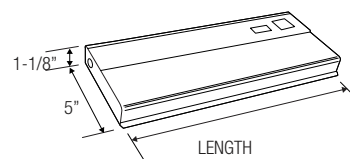
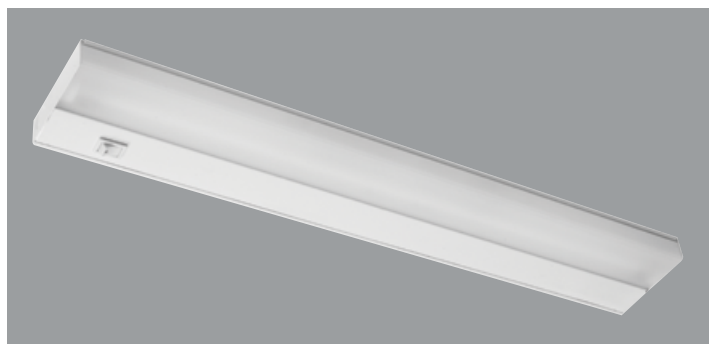


FLUORESCENT UNDERCABINET FIXTURE POLYCARBONATE LENS WITH UV RADIATION PROTECTION



LENGTH
EU-12 = 12-1/4"
EU-21 = 21-1/4"
EU-24 = 24-1/2"
EU-33 = 33-1/2"
EU-42 = 42-1/2"



APPLICATION:

Suitable for retail display, gondolas, cove and undercabinet applications.

PRODUCT FEATURES:

- Easy-fit cover channel attachment
- Tool-less wire-way access
- Detachable channel cover gives tool-less wiring and quick installation
- Romex/BX conduit connector included with every fixture
- Softening lens, linear prismatic diffuser gives better visual comfort
- Available with factory-installed lamp, rocker switch, cordset and outlet options
- Knockouts available at the back, side and rear for easy installation
- Available keyhole mounting slots on the back
- Lamp supplied is 41K (4100 kelvin)

SPECIFICATIONS:

BALLAST

Normal power factor electronic type ballast standard.

ELECTRICAL

Fixture conforms to UL 1598 and is suitable for damp location.

FINISH

U.V. coated rust resistance. Painted parts finished with polyester powder coating. 22-gauge die-formed steel housing.

LISTING

UL/C-UL listed to US and Canadian standard

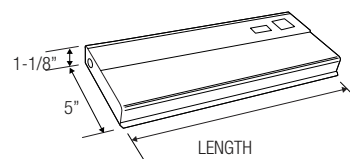
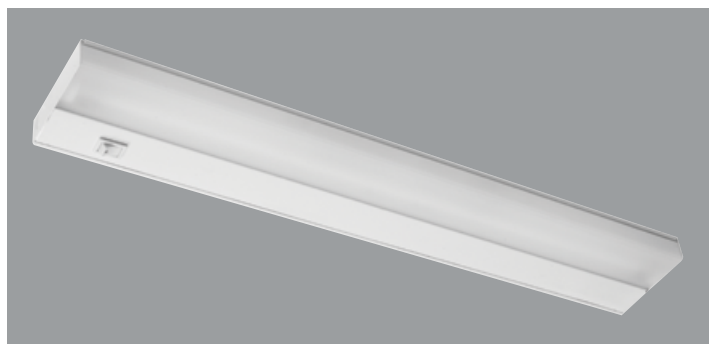
WARRANTY

Guaranteed for one year against mechanical defects

Ordering Information > Example: EU-12-120

EU			
SERIES EU	FIXTURE SIZE/LAMP TYPE (Included)	VOLTAGE	ACCESSORIES
	12" FIXTURE		
	12 - (1 lamp/8W/T5)-(12-1/4"L X 1-1/8"H X 5"W)	120 - (Standard)	SW - Rocker switch (120V only)
	21" FIXTURE	277 - (Optional)	RC - Grounded outlet (120V only)
	21 - (1 lamp/13W/T5)-(21-1/4"L X 1-1/8"H X 5"W)		CS - 6', 3-wire grounded cordset
	24" FIXTURE		
	24 - (2 lamps/8W/T5)-(24-1/2"L X 1-1/8"H X 5"W)		
	33" FIXTURE		
	33 - (1 lamp/8W/T5) & (1 lamp/13W/T5)-(33-1/2"L X 1-1/8"H X 5"W)		
	42" FIXTURE		
	42 - (2 lamps/13W/T5)-(42-1/2"L X 1-1/8"H X 5"W)		

FLUORESCENT UNDERCABINET FIXTURE POLYCARBONATE LENS WITH UV RADIATION PROTECTION



LENGTH
EU-12 = 12-1/4"
EU-21 = 21-1/4"
EU-24 = 24-1/2"
EU-33 = 33-1/2"
EU-42 = 42-1/2"



APPLICATION:

Suitable for retail display, gondolas, cove and undercabinet applications.

PRODUCT FEATURES:

- Easy-fit cover channel attachment
- Tool-less wire-way access
- Detachable channel cover gives tool-less wiring and quick installation
- Romex/BX conduit connector included with every fixture
- Softening lens, linear prismatic diffuser gives better visual comfort
- Available with factory-installed lamp, rocker switch, cordset and outlet options
- Knockouts available at the back, side and rear for easy installation
- Available keyhole mounting slots on the back
- Lamp supplied is 41K (4100 kelvin)

SPECIFICATIONS:

BALLAST

Normal power factor electronic type ballast standard.

ELECTRICAL

Fixture conforms to UL 1598 and is suitable for damp location.

FINISH

U.V. coated rust resistance. Painted parts finished with polyester powder coating. 22-gauge die-formed steel housing.

LISTING

UL/C-UL listed to US and Canadian standard

WARRANTY

Guaranteed for one year against mechanical defects

Ordering Information > Example: EU-12-120

EU			
SERIES EU	FIXTURE SIZE/LAMP TYPE (Included)	VOLTAGE	ACCESSORIES
	12" FIXTURE		
	12 - (1 lamp/8W/T5)-(12-1/4"L X 1-1/8"H X 5"W)	120 - (Standard)	SW - Rocker switch (120V only)
	21" FIXTURE	277 - (Optional)	RC - Grounded outlet (120V only)
	21 - (1 lamp/13W/T5)-(21-1/4"L X 1-1/8"H X 5"W)		CS - 6', 3-wire grounded cordset
	24" FIXTURE		
	24 - (2 lamps/8W/T5)-(24-1/2"L X 1-1/8"H X 5"W)		
	33" FIXTURE		
	33 - (1 lamp/8W/T5) & (1 lamp/13W/T5)-(33-1/2"L X 1-1/8"H X 5"W)		
	42" FIXTURE		
	42 - (2 lamps/13W/T5)-(42-1/2"L X 1-1/8"H X 5"W)		