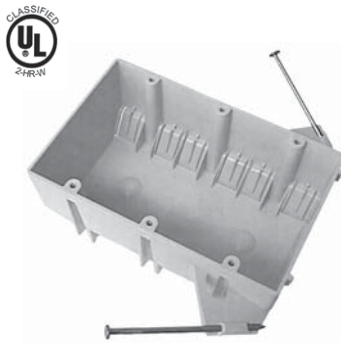


**TWO GANG EZ BOX®**  
**32 Cubic Inch, Nail On**  
**Suitable for Masonry Walls**

**3 5/8" x 4" x 3"**

Enhanced angled nails for quick mounting between studs  
 Eight clamps

Part Number	Carton			UPC-A 0 88700	UPC-ITF 3 0088700
	Quantity	Weight	Cube		
EZ32DN	50	13.00	3.33	01988 1	01988 2
EZ32DNR	15	3.90	1.07	01988 1	01989 9



**THREE GANG EZ BOX®**  
**44 Cubic Inch, Nail On**  
**Suitable for Masonry Walls**

**3 5/8" x 5 7/8" x 2 3/4"**

Enhanced angled nails for quick mounting between studs  
 Twelve clamps

Part Number	Carton			UPC-A 0 88700	UPC-ITF 3 0088700
	Quantity	Weight	Cube		
EZ44TN	50	23.50	3.81	01995 9	01995 0
EZ44TNR	8	3.76	.79	01995 9	01996 7



**FOUR GANG EZ BOX®**  
**55 Cubic Inch, Nail On**  
**Suitable for Masonry Walls**

**3 5/8" x 7 5/8" x 2 5/8"**

Enhanced angled nails and adjustable bracket for quick mounting between studs  
 Twelve clamps

Part Number	Carton			UPC-A 0 88700	UPC-ITF 3 0088700
	Quantity	Weight	Cube		
EZ55QNB	25	17.5	2.22	02005 4	02005 5