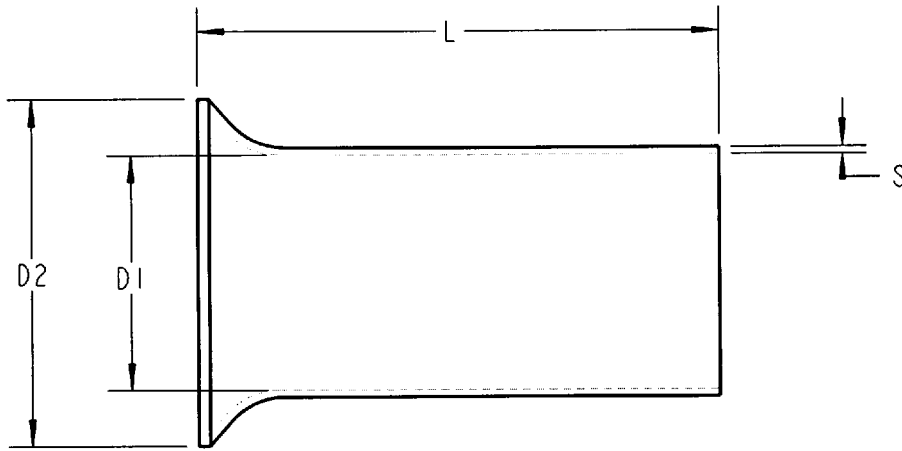


# T&B Sta-Kon®

ALL DIMENSIONS ARE APPROXIMATE, FOR REFERENCE ONLY.



MATERIAL: COPPER  
FINISH: TIN PLATE

CATALOG NO.	CONDUCTOR SECTION		DIMENSIONS INCHES / MM <sup>2</sup>				INSTALLATION TOOLS
	AWG	MM <sup>2</sup>	D1	D2	L	S	
F9000	24	0.25	.030/0.75	.067/1.7	.196/5	.006/0.15	T3, ERG-2
F9001	20	0.50	.039/1.0	.083/2.1	.315/8		T1, T3, ERG-2
F9002					.394/10		
F9003	18	0.75	.047/1.2	.091/2.3	.236/6		
F9004					.394/10		
F9005	17	1.0	.055/1.4	.098/2.5	.236/6		
F9006					.394/10		
F9007	16	1.5	.067/1.7	.110/2.8	.276/7		
F9008					.394/10		
F9009					.473/12		
F9010					.709/18		
F9011	14	2.5	.087/2.2	.139/3.4	.276/7		
F9012					.394/10		
F9013					.472/12		
F9014					.709/18		

### GENERAL NOTES

- ALL DIMENSIONS ARE FOR REFERENCE ONLY.
- DIMENSIONS IN BRACKETS [ ] ARE IN METRIC UNITS.

### REVISIONS

\*\* SEE ERN ( \*\*\*\* ) FOR APPROVAL SIGNATURES & RELEASE DATE.  
PROJECT NO: \*\*\*\*

**Thomas & Betts**  
www.tnb.com

DESCRIPTION:

**UNINSULATED FERRULE TERMINALS**

ORIGINAL PROJECT NO / ( ERN NO )

TM401330 / ( 2007550 )

SHEET NO:

1 OF 2

REV. NO:

\*\*

DRAWING NO:

WSD-000319

CATALOG NO.	CONDUCTOR SECTION		DIMENSIONS INCHES / MM <sup>2</sup>				INSTALLATION TOOLS		
	AWG	MM <sup>2</sup>	D1	D2	L	S			
F9015	12	4.0	.110/2.8	.158/4	.354/9	.008/0.2	T3, ERG-2		
F9016					.472/12				
F9017					.591/15				
F9018					.709/18				
F9019	10	6.0	.138/3.5	.185/4.7	.472/12				
F9020					.591/15				
F9021					.709/18				
F9022					.472/12				
F9023	8	10.0	.177/4.5	.228/5.8	.591/15			.010/0.25	ERG-2
F9024					.709/18				
F9025					.472/12				
F9026					.591/15				
F9027	6	16.0	.228/5.8	.295/7.5	.709/18				
F9028					.984/25				
F9029					1.26/32				
F9030					.591/15				
F9031	4	25.0	.287/7.3	.374/9.5	.709/18	.12/0.3	TB5095, ERG-2		
F9032					.984/25				
F9033					1.26/32				
F9034					.709/18				
F9035	2	35.0	.327/8.3	.433/11	.984/25				
F9036					1.26/32				
F9037					.709/18				
F9038	1/0	50.0	.406/10.3	.512/13	.984/25			.16/0.4	TB5095, TB70150
F9039					1.18/30				
F9040	2/0	70.0	.493/12.5	.591/15	.984/25				
F9041					1.26/32				
F9042	3/0	95.0	.571/14.5	.670/17	.984/25				
F9043					1.18/30				
F9044					1.26/32				
F9045	4/0	120.0	.650/16.5	.748/19	1.26/32	.20/0.5	TB70150		
F9046					1.57/40				

**Thomas & Betts**  
www.tnb.com

DESCRIPTION:

**UNINSULATED FERRULE TERMINALS**

SHEET NO:

2 OF 2

REV. NO:

DRAWING NO:

**WSD-000319**