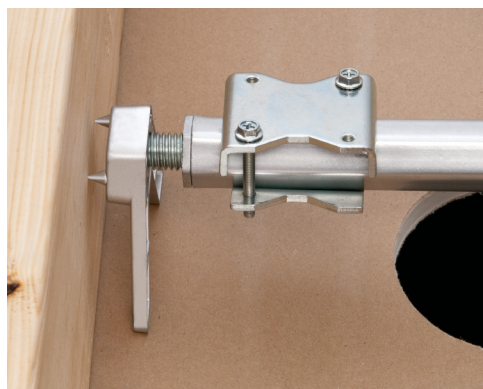


# Fan/Fixture Box with Adjustable Bracket

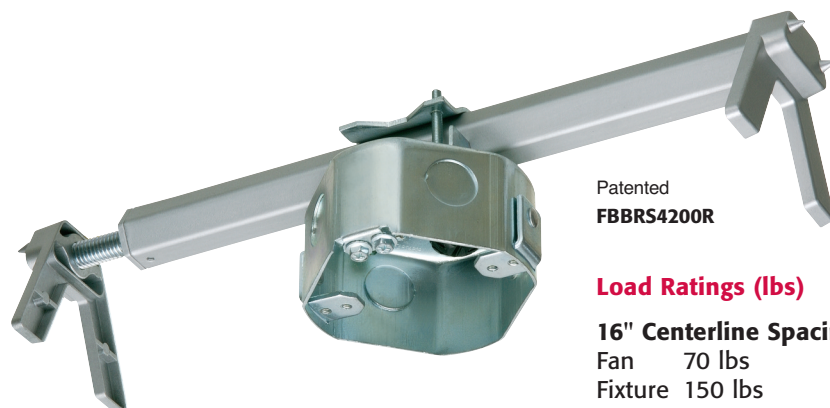
*HIGHER Weight Ratings • For Retrofit*



Bracket ends bite into wood



FBR4200R holds a 70 lb fan



Patented  
**FBR4200R**

## Load Ratings (lbs)

### 16" Centerline Spacing

Fan 70 lbs  
Fixture 150 lbs

### 24" Centerline Spacing

Fan 70 lbs  
Fixture 90 lbs

Arlington's extra heavy-duty, **plated steel fan/fixture box** now has higher UL weight ratings:

**150 lbs for fixtures, 70 lbs for fans** when installed on joists spaced 16" on center;

**70 lbs for fans, 90 lbs for a fixture** on joists spaced 24" on-center. CSA rated for 50 lb fan or fixture.

Our FBR4200R features a fully adjustable bracket for installations between joists or rafters spaced from 16" to 24" on center. Bracket ends bite into the wood rafter or joist, holding the fan or fixture securely in place.

- Fast, easy installation in old work and retrofit projects
- 20.0 cubic inch capacity, 2 inch box depth
- No parts to lose – Installation screws ship captive, with an installed mud cover and NM cable connector
- UL/CSA Listed



**Arlington®**

1 Stauffer Industrial Park  
Scranton, PA 18517  
800/233.4717 • Fax 570/562.0646  
[www.aifittings.com](http://www.aifittings.com)

# Fan/Fixture Box with Adjustable Bracket

*Installs between rafters spaced 16" to 24" on center*

Easy, secure fan or fixture installation in retrofit projects



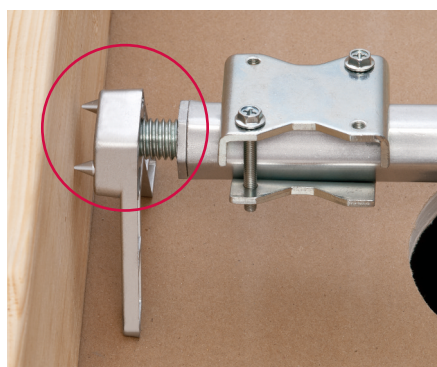
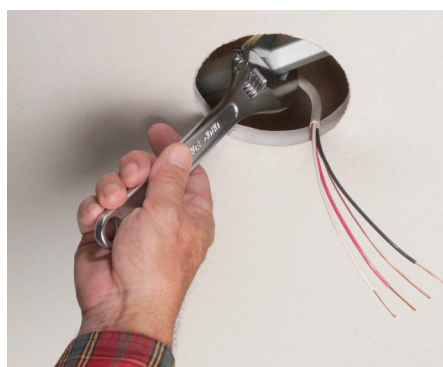
1 Determine location of fan/fixture. Cut a 4-1/16" diameter hole in ceiling. Remove box (only) from the bracket. Loosen screws on sled to enable centering above hole (see step 5). Insert bracket through the opening.



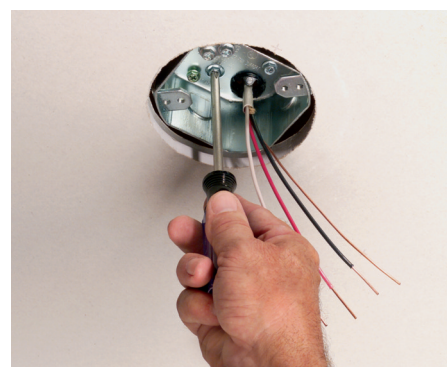
2 Position bracket between joists with "feet" resting on the ceiling. Embed bracket ends in joists by turning the hex bar by hand...



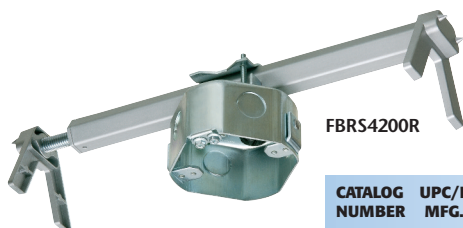
3 ...then tightening with a wrench.



4 As the hex bar is tightened, the bracket ends bite into the joists, holding the unit securely in place.



5 Position sled. Tighten screws. Pull cable through installed NM cable connector. Reattach the box to the sled. Attach the fan/fixture bracket with supplied screws.



FBR54200R

CATALOG NUMBER	UPC/DCI/NAED MFG. #018997	DESCRIPTION <b>FAN BOX FOR RETROFIT</b>	UNIT PKG	STD PKG
FBR54200R	75315	Heavy-duty, plated steel fan/fixture box w/ fully adjustable bracket	1	10

## LOAD RATINGS (LBS)

### RAFTER/JOIST

#### Centerline Spacing

16"	FAN 70 LBS	FIXTURE 150 LBS
24"	70 LBS	90 LBS



Patented

**Arlington®**

1 Stauffer Industrial Park  
Scranton, PA 18517

800/233.4717 • Fax

570/562.0646

www.aifittings.com

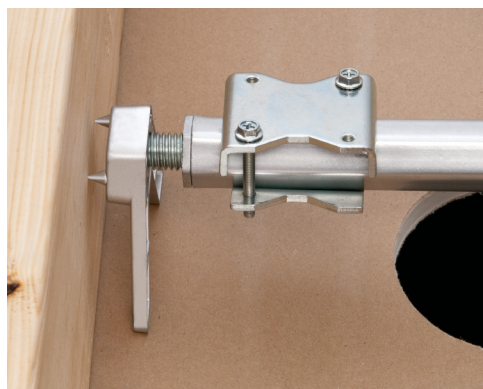
Distributed by

FBR54200R Rev 0122/25M



# Fan/Fixture Box with Adjustable Bracket

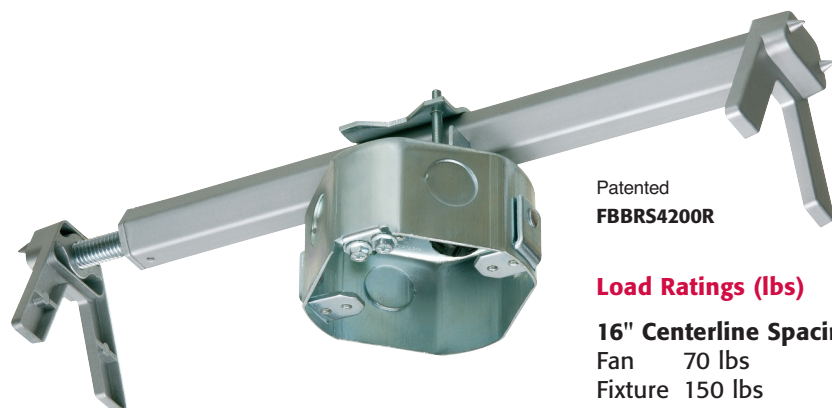
*HIGHER Weight Ratings • For Retrofit*



Bracket ends bite into wood



FBR4200R holds a 70 lb fan



Patented  
**FBR4200R**

## Load Ratings (lbs)

### 16" Centerline Spacing

Fan 70 lbs

Fixture 150 lbs

### 24" Centerline Spacing

Fan 70 lbs

Fixture 90 lbs

Arlington's extra heavy-duty, **plated steel fan/fixture box** now has higher UL weight ratings:

**150 lbs for fixtures, 70 lbs for fans** when installed on joists spaced 16" on center;

**70 lbs for fans, 90 lbs for a fixture** on joists spaced 24" on-center. CSA rated for 50 lb fan or fixture.

Our FBR4200R features a fully adjustable bracket for installations between joists or rafters spaced from 16" to 24" on center. Bracket ends bite into the wood rafter or joist, holding the fan or fixture securely in place.

- Fast, easy installation in old work and retrofit projects
- 20.0 cubic inch capacity, 2 inch box depth
- No parts to lose – Installation screws ship captive, with an installed mud cover and NM cable connector
- UL/CSA Listed



**Arlington®**

1 Stauffer Industrial Park  
Scranton, PA 18517

800/233.4717 • Fax 570/562.0646

[www.aifittings.com](http://www.aifittings.com)

# Fan/Fixture Box with Adjustable Bracket

*Installs between rafters spaced 16" to 24" on center*

Easy, secure fan or fixture installation in retrofit projects



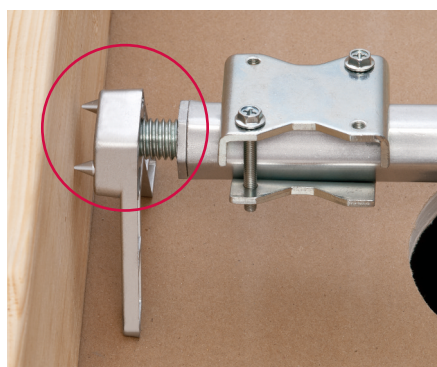
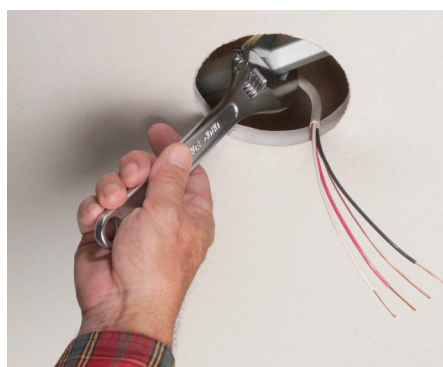
1 Determine location of fan/fixture. Cut a 4-1/16" diameter hole in ceiling. Remove box (only) from the bracket. Loosen screws on sled to enable centering above hole (see step 5). Insert bracket through the opening.



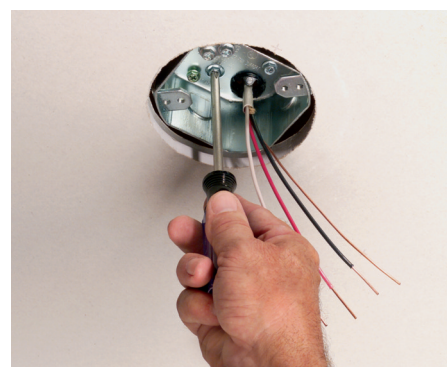
2 Position bracket between joists with "feet" resting on the ceiling. Embed bracket ends in joists by turning the hex bar by hand...



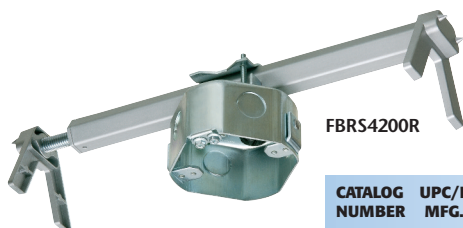
3 ...then tightening with a wrench.



4 As the hex bar is tightened, the bracket ends bite into the joists, holding the unit securely in place.



5 Position sled. Tighten screws. Pull cable through installed NM cable connector. Reattach the box to the sled. Attach the fan/fixture bracket with supplied screws.



FBR54200R

CATALOG NUMBER	UPC/DCI/NAED MFG. #018997	DESCRIPTION <b>FAN BOX FOR RETROFIT</b>	UNIT PKG	STD PKG
FBR54200R	75315	Heavy-duty, plated steel fan/fixture box w/ fully adjustable bracket	1	10

## LOAD RATINGS (LBS)

### RAFTER/JOIST

#### Centerline Spacing

16"	FAN 70 LBS	FIXTURE 150 LBS
24"	70 LBS	90 LBS



Patented

**Arlington®**

1 Stauffer Industrial Park  
Scranton, PA 18517

800/233.4717 • Fax

570/562.0646

www.aifittings.com

Distributed by

FBR54200R Rev 0122/25M