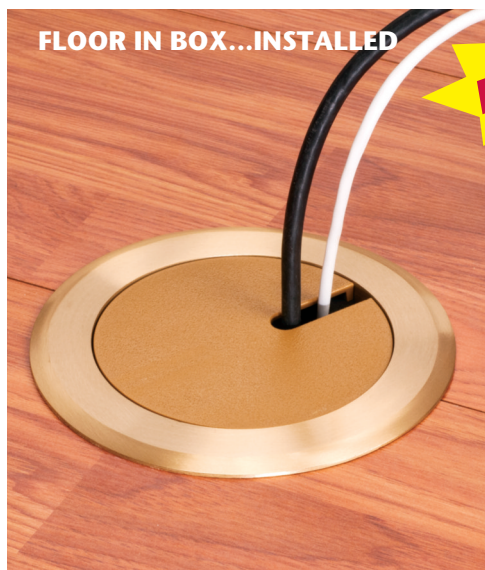


**NEW!**  
more on  
reverse

# IN BOX™ COVER KIT for Concrete Floor Box

## Recessed Cover Kit with Decorator-style Receptacle



**NEW!**

### INSTALLATION INSTRUCTIONS



**1** After concrete has cured and finished floor installed, cut the installed FLBC4500 concrete box to finished floor height. *If using the low voltage divider, cut the same amount from the bottom of the divider as you removed from the can.*



**2** Secure the leveling ring assembly to the installed FLBC4500 can with PVC cement.



**3** Install the blank cover in unused boxes to avoid possible trip hazard.



**4** Remove blank cover to use receptacle.



**5** Install the slotted in-use non-metallic plug cover and store blank cover for future use.

*Available with blank metal or plastic covers in a variety of colors.*

Arlington's new **IN BOX™ COVER KITS** give installers the best way to install a receptacle in new concrete.

These new **COVER KITS** are **RECESSED** and install *into the can* so they look great! And they reduce the trip hazard caused by plugs sticking out of the box.



You can also have power and low voltage in the same box. Talk about convenience!

IN BOX Cover Kits are available with **metal flanges** in brass or nickel-plated brass. And **plastic, in five colors**: light almond, gray, caramel, black and brown.

They're easy to install into our FLBC4500 concrete floor box (*sold separately*).

Made of heavy-duty plastic, the 4.5" non-metallic FLBC4500 **concrete box** is a common size, that accommodates **our new IN BOX COVER and other common single-door, 4" diameter, 3-hole covers**.



**Arlington**



1 Stauffer Industrial Park  
Scranton, PA 18517  
**800/233.4717**  
**Fax 570/562.0646**  
**www.aifittings.com**

# IN BOX™ Cover Kit *installs in FLBC4500*



*Put a RECESSED Receptacle in New Concrete – The Easy Way!*



FLBC4500

CATALOG NUMBER	UPC/DCI/NAED MFG. #018997	DESCRIPTION FINISH/COLOR, COVER STYLE	UNIT PKG	STD PKG
FLBC4500	22010	4.5" Non-metallic <b>ROUND BOX</b> for Concrete Pours (conduit plugs, mud cover)	1	5

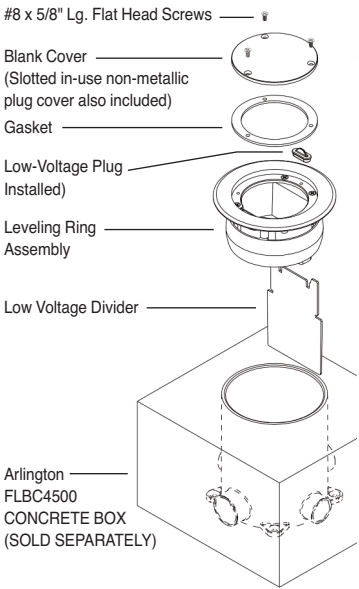
**KITS INCLUDE**  
Leveling Ring Assembly (w/ Carpet Flange, Funnel & UL Listed 15 A Decorator Receptacle), Low Voltage Divider, Blank Cover w/ Gasket, In-Use Slotted Cover, Low-Voltage Plug, #8 x 5/8" Lg. Flat Head Screw

**IN BOX™ COVER KIT WITH METAL FLANGE, BLANK COVER, AND NON-METALLIC IN-USE SLOTTED PLUG COVER**

FLBC4560DMB	09105	RECESSED COVER KIT – Brass, w/ Decorator Style Receptacle	1	1
FLBC4560DNL	09106	RECESSED COVER KIT – Nickel plated Brass, w/ Decorator Style Receptacle	1	1

**IN BOX™ COVER KIT WITH PLASTIC FLANGE, BLANK AND IN-USE SLOTTED PLUG COVER**

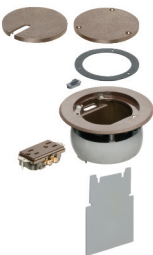
FLBC4560DBL	09100	RECESSED COVER KIT – Black, w/ Black Decorator Style Receptacle	1	1
FLBC4560DBR	09101	RECESSED COVER KIT – Dark Brown, w/ Dark Brown Decorator Style Receptacle	1	1
FLBC4560DCA	09102	RECESSED COVER KIT – Caramel, w/ Dark Brown Decorator Style Receptacle	1	1
FLBC4560DGY	09103	RECESSED COVER KIT – Gray, w/ Black Decorator Style Receptacle	1	1
FLBC4560DLA	09104	RECESSED COVER KIT – Light Almond, w/ Light Almond Decorator Style Receptacle	1	1



Slotted In-Use Non-Metallic Plug Cover  
Non-Metallic Blank Cover



FLBC4560DBL  
Black Cover



FLBC4560DBR  
Dark Brown Cover



FLBC4560DCA  
Caramel Cover

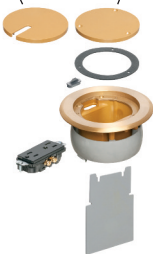


FLBC4560DGY  
Gray Cover



FLBC4560DLA  
Light Almond Cover

Slotted In-Use Non-Metallic Plug Cover  
Blank Metal Cover



FLBC4560DMB  
Brass Metal Cover



FLBC4560DNL  
Nickel Plated Metal Cover

NOTE: Receptacle ships installed in the leveling ring assembly in all kits

**Arlington**



1 Stauffer Industrial Park  
Scranton, PA 18517  
**800/233.4717**  
**Fax 570/562.0646**  
**www.aifittings.com**

Distributed by



**NEW!**  
more on  
reverse

# IN BOX™ COVER KIT for Concrete Floor Box

## Recessed Cover Kit with Decorator-style Receptacle



**NEW!**

### INSTALLATION INSTRUCTIONS



**1** After concrete has cured and finished floor installed, cut the installed FLBC4500 concrete box to finished floor height. *If using the low voltage divider, cut the same amount from the bottom of the divider as you removed from the can.*



**2** Secure the leveling ring assembly to the installed FLBC4500 can with PVC cement.



**3** Install the blank cover in unused boxes to avoid possible trip hazard.



**4** Remove blank cover to use receptacle.



**5** Install the slotted in-use non-metallic plug cover and store blank cover for future use.

*Available with blank metal or plastic covers in a variety of colors.*

Arlington's new **IN BOX™ COVER KITS** give installers the best way to install a receptacle in new concrete.

These new **COVER KITS** are **RECESSED** and install *into the can* so they look great! And they reduce the trip hazard caused by plugs sticking out of the box.



You can also have power and low voltage in the same box. Talk about convenience!

IN BOX Cover Kits are available with **metal flanges** in brass or nickel-plated brass. And **plastic, in five colors**: light almond, gray, caramel, black and brown.

They're easy to install into our FLBC4500 concrete floor box (*sold separately*).

Made of heavy-duty plastic, the 4.5" non-metallic FLBC4500 **concrete box** is a common size, that accommodates **our new IN BOX COVER and other common single-door, 4" diameter, 3-hole covers**.



**Arlington**



1 Stauffer Industrial Park  
Scranton, PA 18517  
**800/233.4717**  
**Fax 570/562.0646**  
**www.aifittings.com**

# IN BOX™ Cover Kit *installs in FLBC4500*



*Put a RECESSED Receptacle in New Concrete – The Easy Way!*



FLBC4500

CATALOG NUMBER	UPC/DCI/NAED MFG. #018997	DESCRIPTION FINISH/COLOR, COVER STYLE	UNIT PKG	STD PKG
FLBC4500	22010	4.5" Non-metallic <b>ROUND BOX</b> for Concrete Pours (conduit plugs, mud cover)	1	5

#### KITS INCLUDE

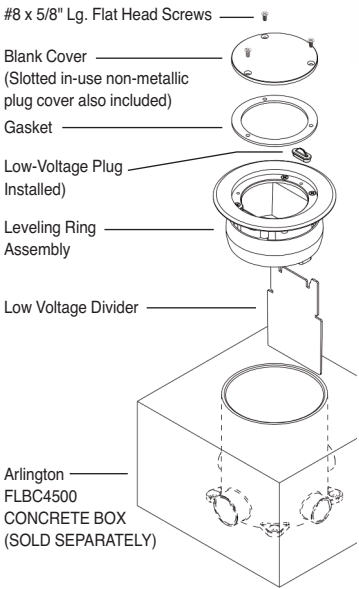
Leveling Ring Assembly (w/ Carpet Flange, Funnel & UL Listed 15 A Decorator Receptacle), Low Voltage Divider, Blank Cover w/ Gasket, In-Use Slotted Cover, Low-Voltage Plug, #8 x 5/8" Lg. Flat Head Screw

#### IN BOX™ COVER KIT WITH METAL FLANGE, BLANK COVER, AND NON-METALLIC IN-USE SLOTTED PLUG COVER

FLBC4560DMB	09105	RECESSED COVER KIT – Brass, w/ Decorator Style Receptacle	1	1
FLBC4560DNL	09106	RECESSED COVER KIT – Nickel plated Brass, w/ Decorator Style Receptacle	1	1

#### IN BOX™ COVER KIT WITH PLASTIC FLANGE, BLANK AND IN-USE SLOTTED PLUG COVER

FLBC4560DBL	09100	RECESSED COVER KIT – Black, w/ Black Decorator Style Receptacle	1	1
FLBC4560DBR	09101	RECESSED COVER KIT – Dark Brown, w/ Dark Brown Decorator Style Receptacle	1	1
FLBC4560DCA	09102	RECESSED COVER KIT – Caramel, w/ Dark Brown Decorator Style Receptacle	1	1
FLBC4560DGY	09103	RECESSED COVER KIT – Gray, w/ Black Decorator Style Receptacle	1	1
FLBC4560DLA	09104	RECESSED COVER KIT – Light Almond, w/ Light Almond Decorator Style Receptacle	1	1



Slotted In-Use Non-Metallic Plug Cover  
Non-Metallic Blank Cover



FLBC4560DBL  
Black Cover



FLBC4560DBR  
Dark Brown Cover



FLBC4560DCA  
Caramel Cover

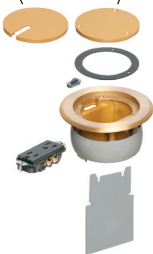


FLBC4560DGY  
Gray Cover



FLBC4560DLA  
Light Almond Cover

Slotted In-Use Non-Metallic Plug Cover  
Blank Metal Cover



FLBC4560DMB  
Brass Metal Cover



FLBC4560DNL  
Nickel Plated Metal Cover

NOTE: Receptacle ships installed in the leveling ring assembly in all kits

**Arlington**



1 Stauffer Industrial Park  
Scranton, PA 18517  
800/233.4717  
Fax 570/562.0646  
www.aifittings.com

Distributed by