

Series C G-Frame

15-100 amperes, 120-480 volts

Contents

Description	Page
Catalog Number Selection	3
Time Current Curves: Thermal/Magnetic Trip Unit	
GB, GHB, GC, GHC 15-100A, 1 Pole.	SC-3500-83B 4
GB, GHB, GC, GHC 15-100A, 2, 3 Poles.	SC-3501-83B 5
GHB, GHC, GD 15-100A, 2, 3 Poles	TC01201057E 6
GD 15-100A, 2, 3 Poles.	SC-6030-95 7
GHBGFEP, GHCGFEP 15-60A, 2 Pole	SC-6759-97 8
GHBS, GBHS 15-30A, 1, 2 Poles	SC-5695-93B 9

Note:

The following curves are UL489 Listed for use in North America.

The following circuit breakers are derived from Eaton, Westinghouse, or Cutler-Hammer brand.

**Time Current Curves are engineering reference documents for application and coordination purposes only.
For field testing molded case circuit breakers, refer to NEMA AB 4 guidelines**

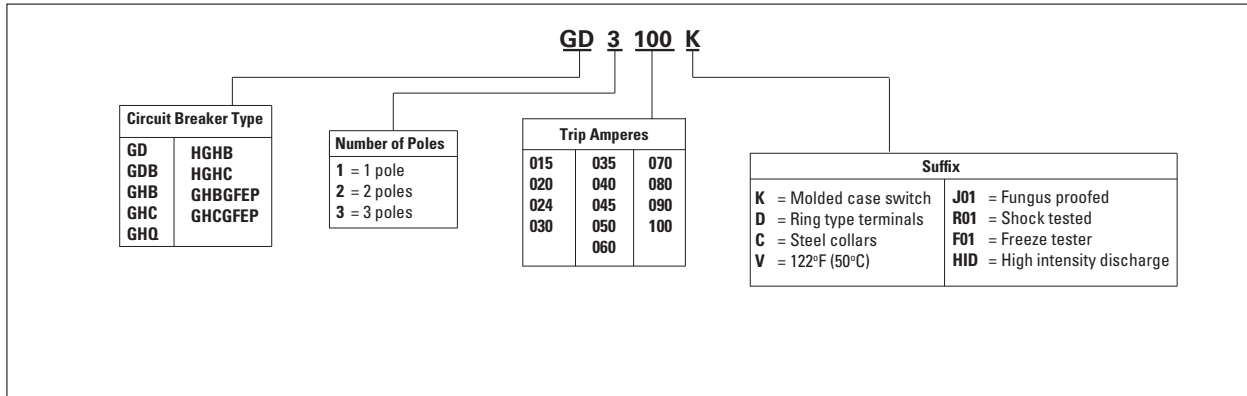


Powering Business Worldwide

Catalog Number Selection

This information is presented only as an aid to understanding catalog numbers. It is not to be used to build catalog numbers for circuit breakers or trip units.

Table 1. Circuit Breaker/Frame



Types GB, GHB, GC, GHC 15-100 Amperes, 1 Pole

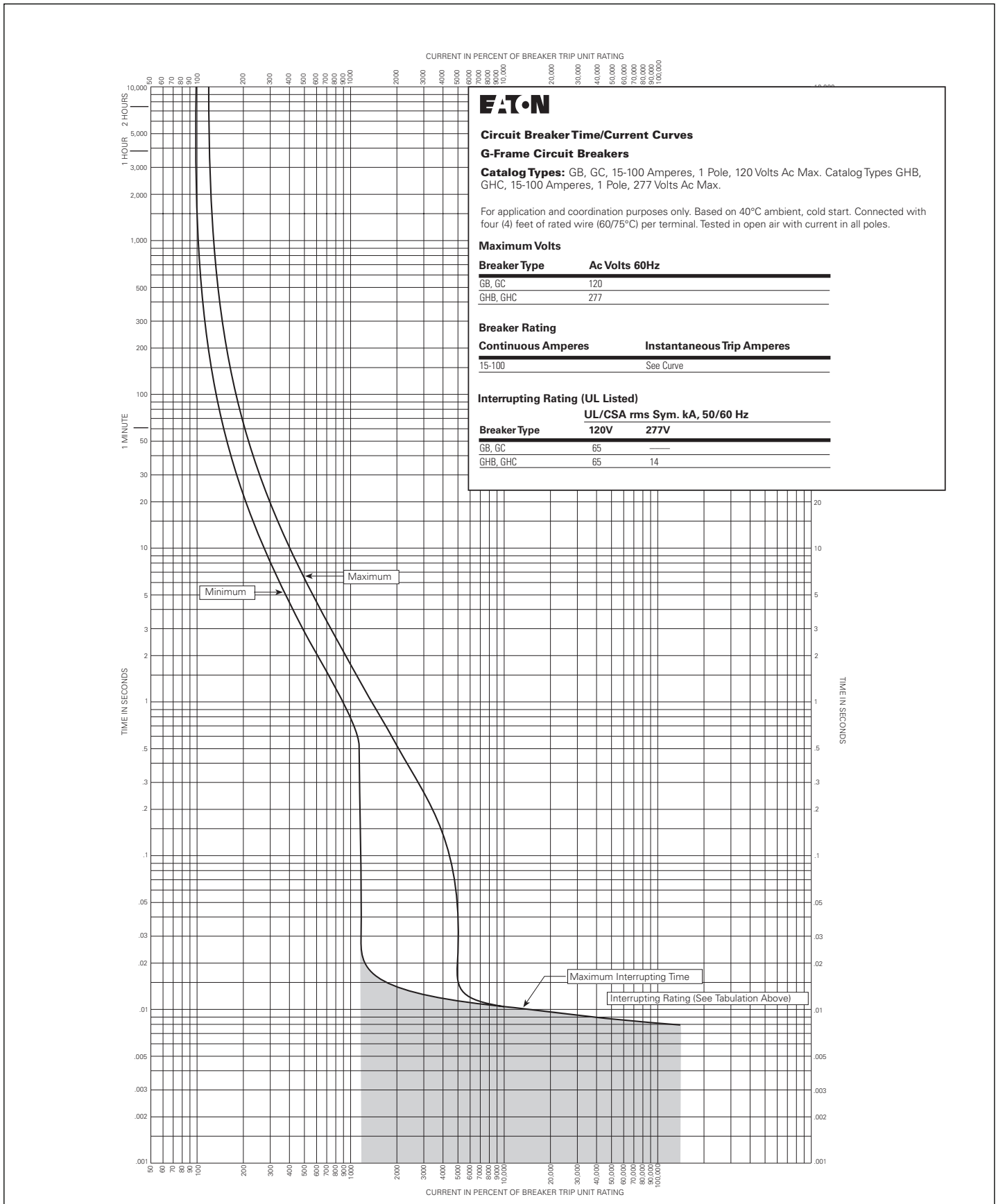


Figure 1. GB, GHB, GC, GHC 15-100A, 1 Pole - Curve Number SC-3500-83B, October 1997

Types GB, GHB, GC, GHC 15-100 Amperes, 2 and 3 Poles

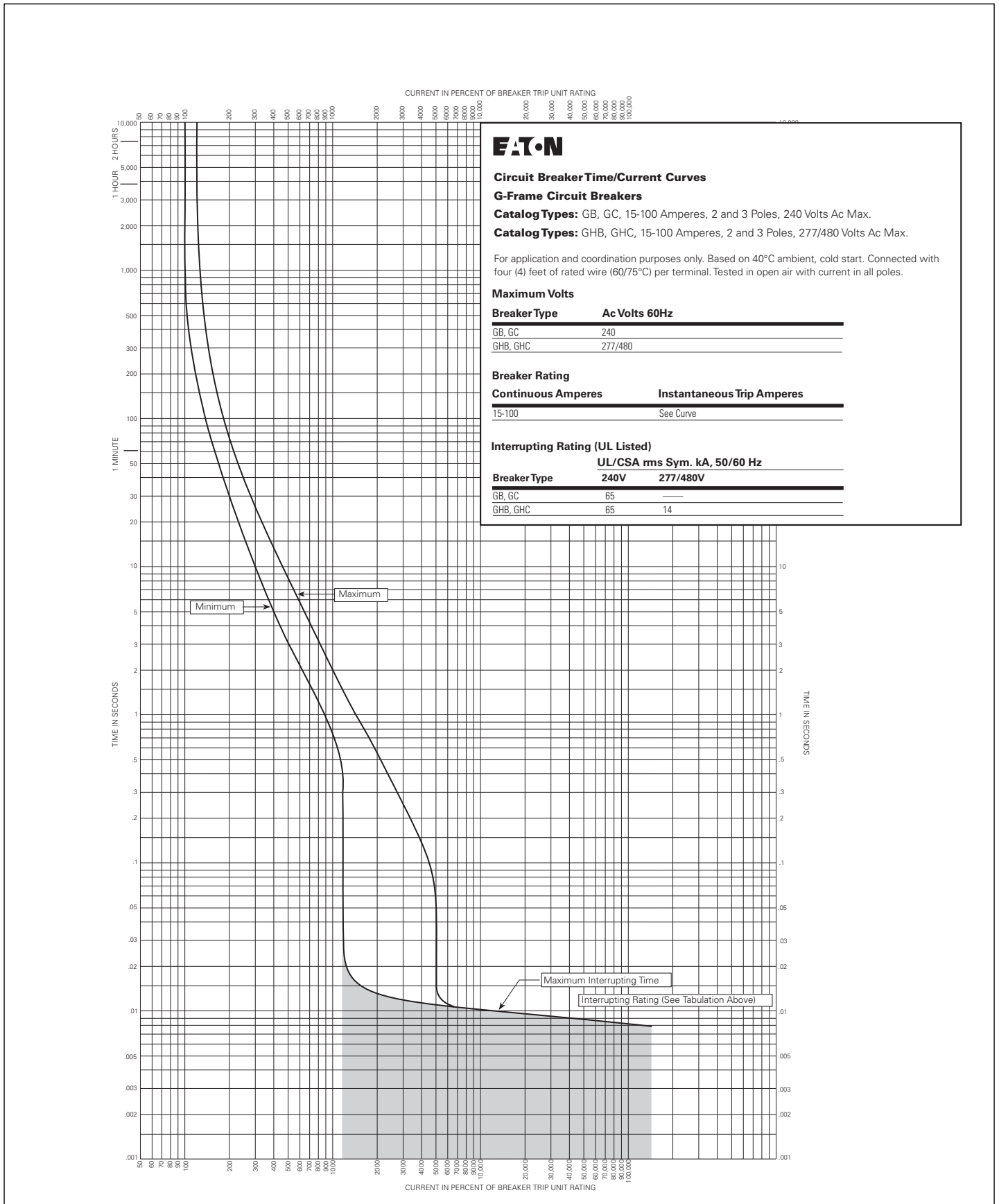


Figure 2. GB, GHB, GC, GHC 15-100A, 2, 3 Poles - Curve Number SC-3501-83B, October 1997

Type GHB/GHC/GD 2 and 3 poles, 15-100 Amperes

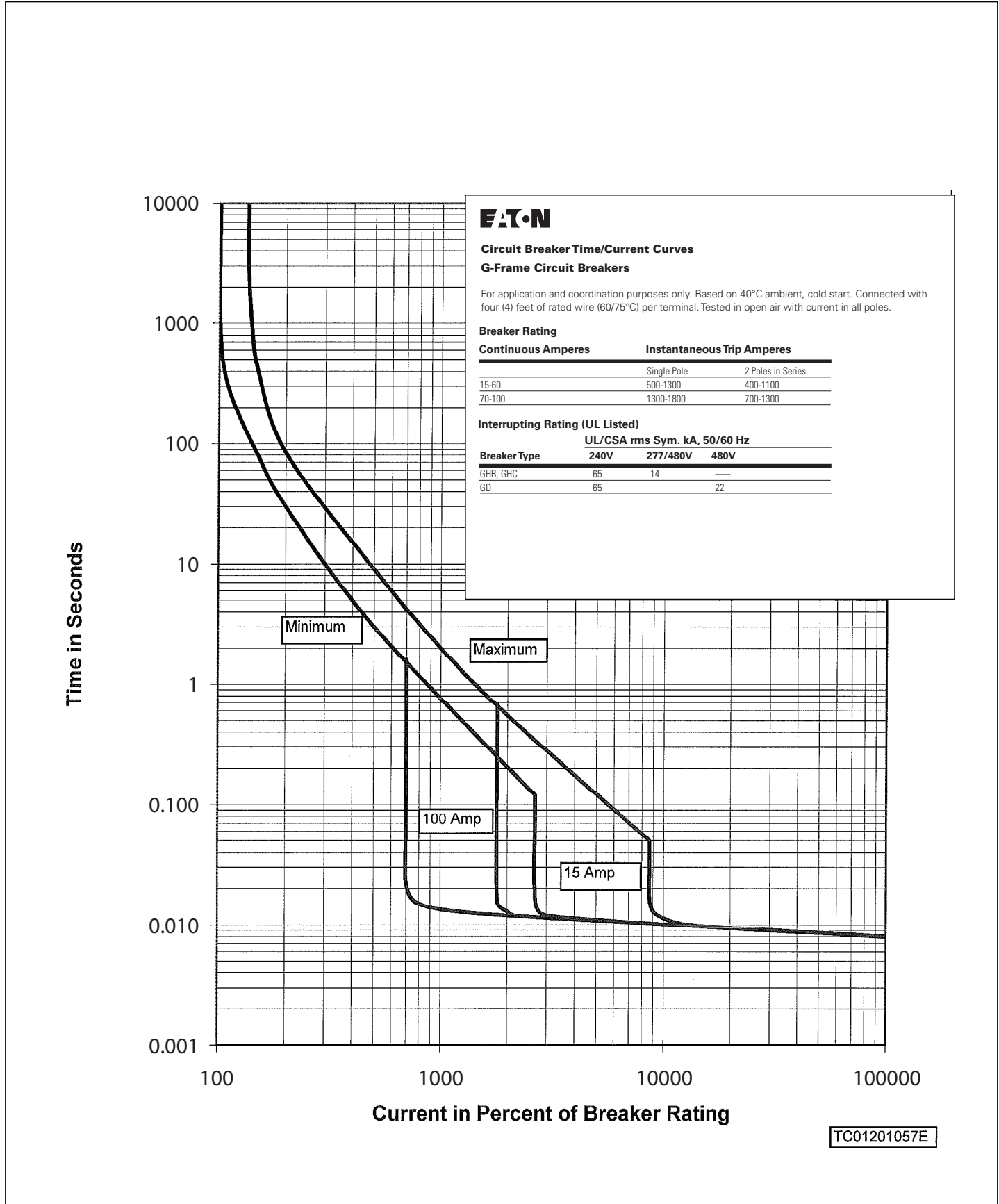


Figure 3. GHB, GHC, GD 15-100A, 2, 3 Poles - Curve Number TC01201057E

Type GD 15-100 Amperes, 2 and 3 Poles

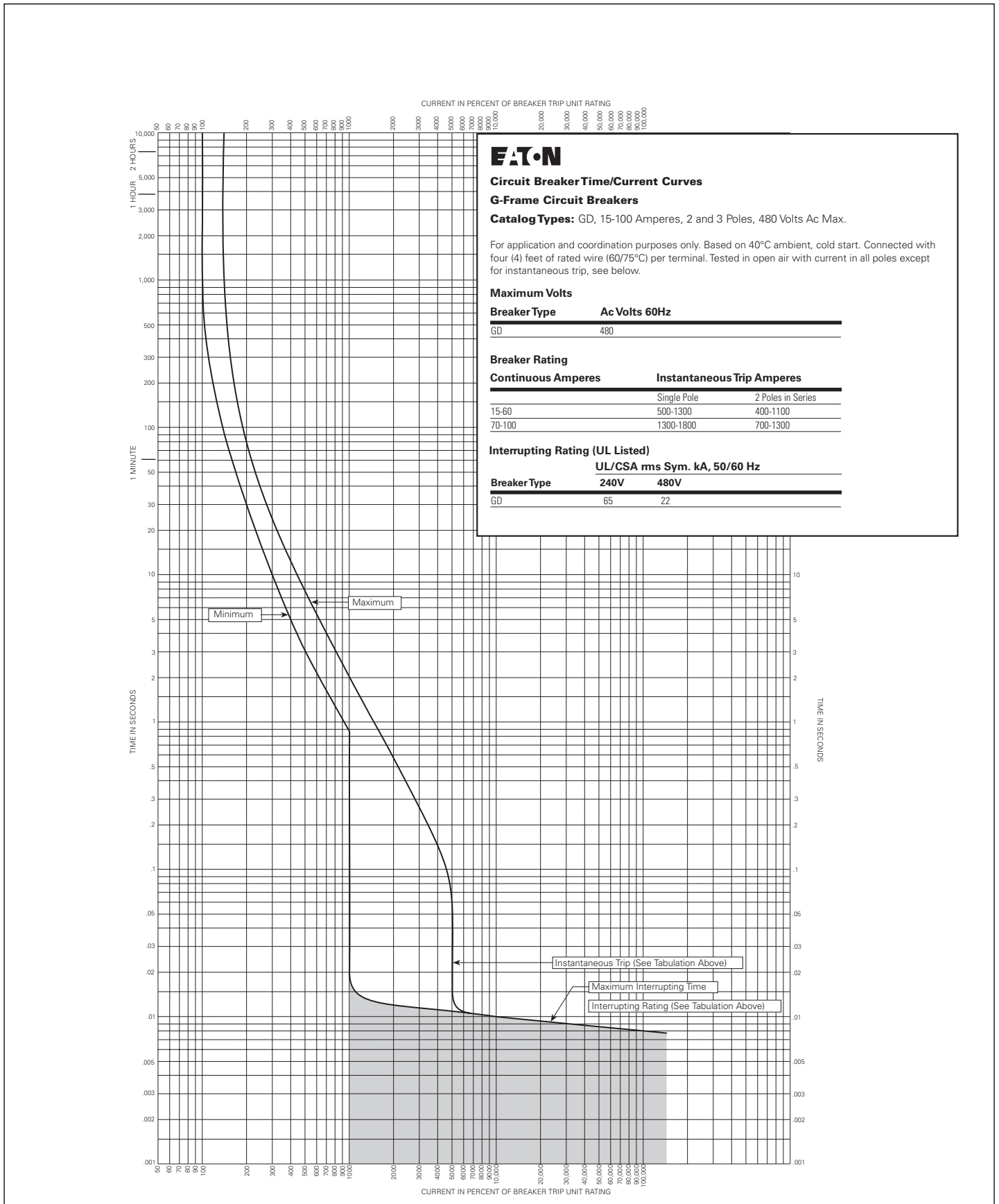


Figure 4. GD 15-100A, 2, 3 Poles - Curve Number SC-6030-95, October 1997

Types GHBGFEP, GHCGFEP 15-60 Amperes, 2 Pole (Single Phase)

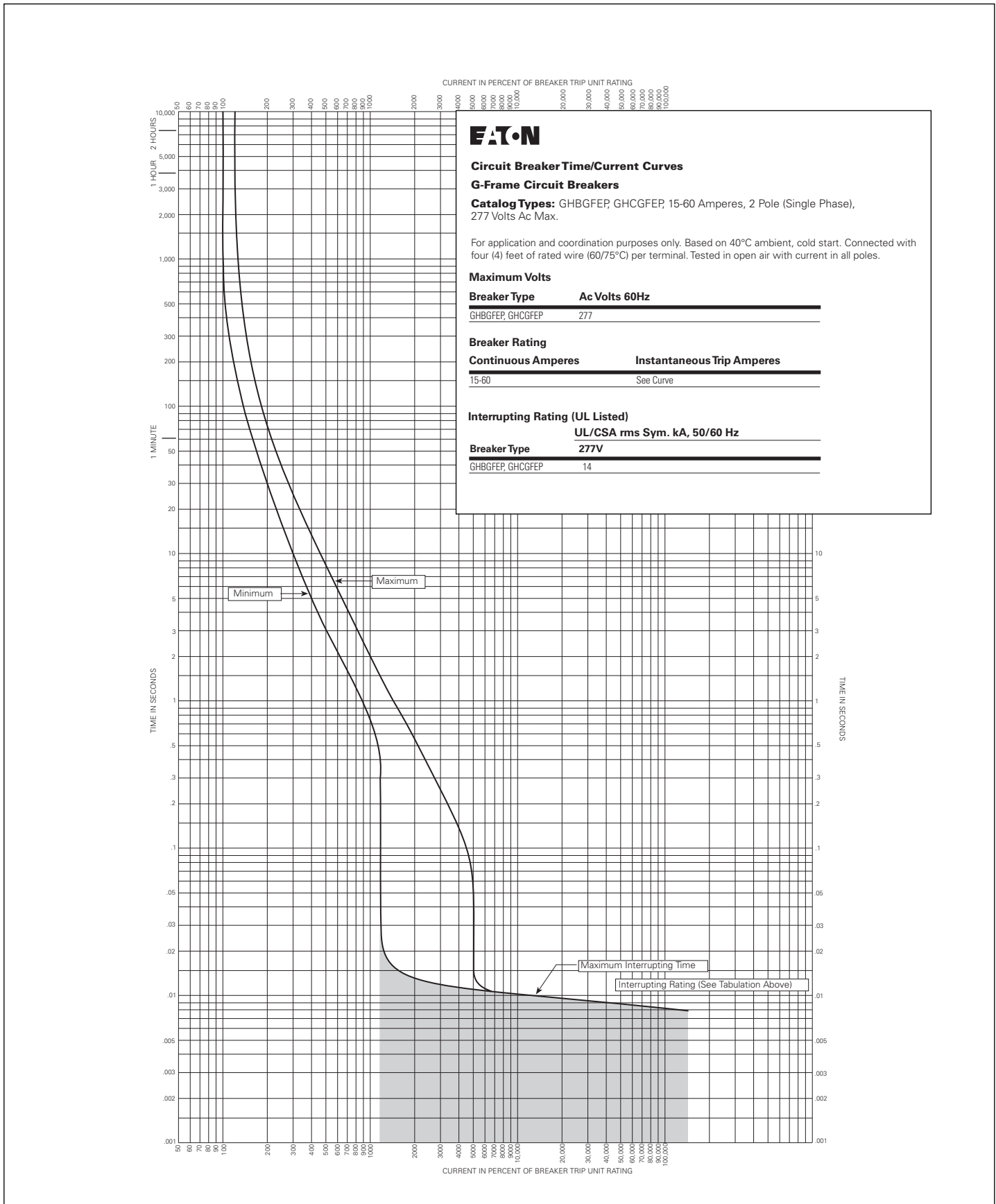
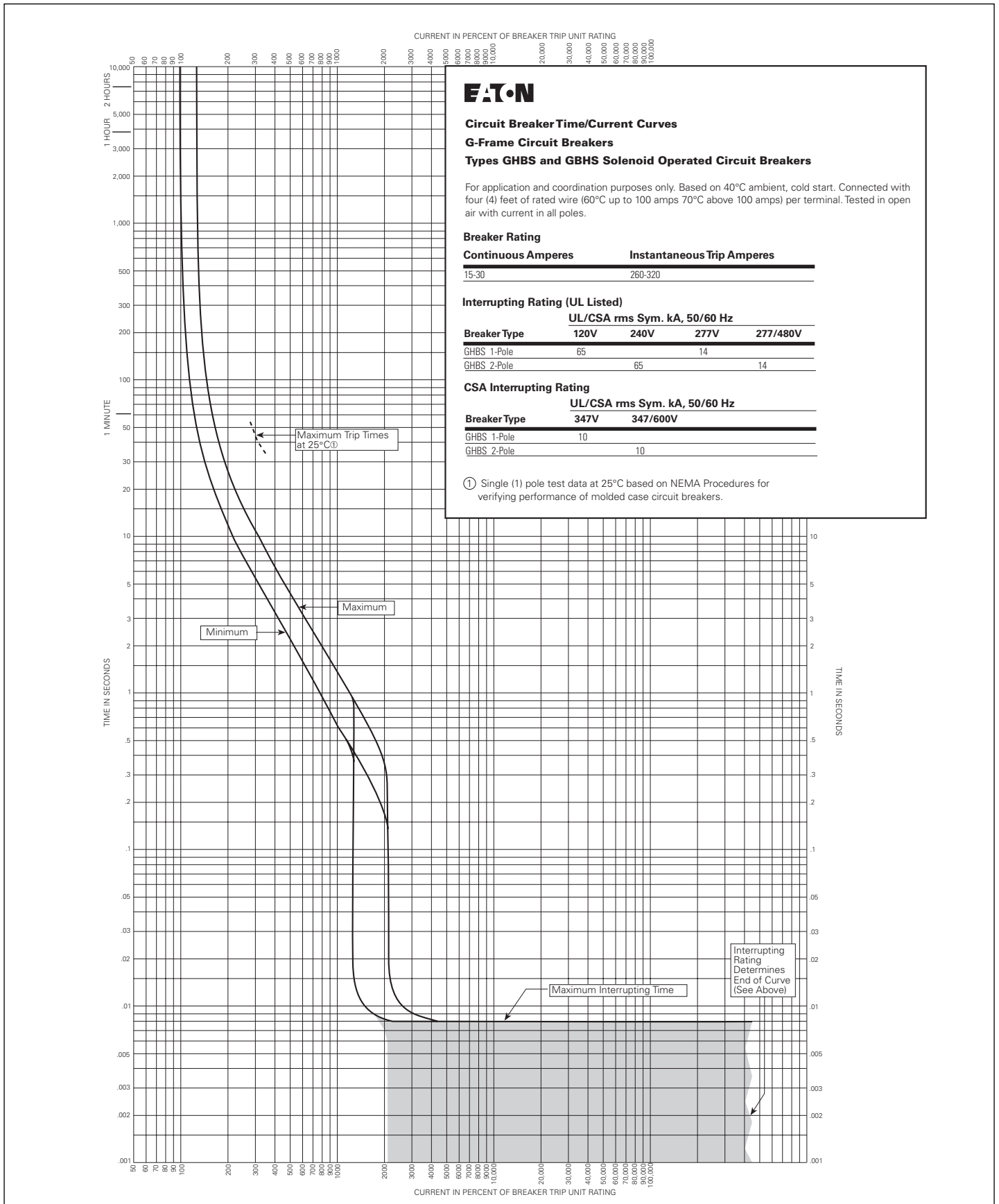


Figure 5. GHBGFEP, GHCGFEP 15-60A, 2 Pole - Curve Number SC-6759-97, October 1997

Type GHBS 15-30 Amperes, 1, 2 Poles



Eaton
1000 Eaton Boulevard
Cleveland, OH 44122
United States
Eaton.com

© 2014 Eaton
All Rights Reserved
Printed in USA
Publication No. TD012032EN / KDC
April 2014



Eaton is a registered trademark.

All other trademarks are property
of their respective owners.

Series C G-Frame

15-100 amperes, 120-480 volts

Contents

Description	Page
Catalog Number Selection	3
Time Current Curves: Thermal/Magnetic Trip Unit	
GB, GHB, GC, GHC 15-100A, 1 Pole.	SC-3500-83B 4
GB, GHB, GC, GHC 15-100A, 2, 3 Poles.	SC-3501-83B 5
GHB, GHC, GD 15-100A, 2, 3 Poles	TC01201057E 6
GD 15-100A, 2, 3 Poles.	SC-6030-95 7
GHBGFEP, GHCGFEP 15-60A, 2 Pole	SC-6759-97 8
GHBS, GBHS 15-30A, 1, 2 Poles	SC-5695-93B 9

Note:

The following curves are UL489 Listed for use in North America.

The following circuit breakers are derived from Eaton, Westinghouse, or Cutler-Hammer brand.

**Time Current Curves are engineering reference documents for application and coordination purposes only.
For field testing molded case circuit breakers, refer to NEMA AB 4 guidelines**

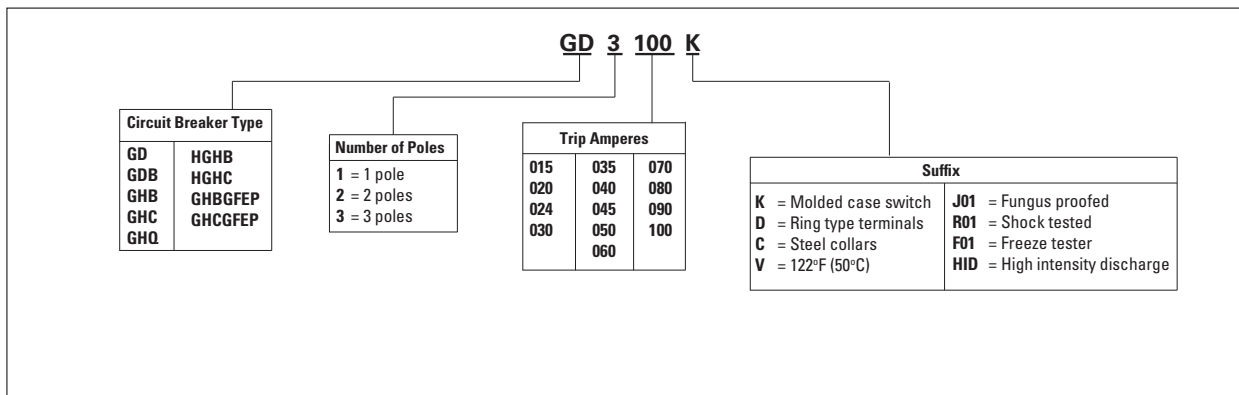


Powering Business Worldwide

Catalog Number Selection

This information is presented only as an aid to understanding catalog numbers. It is not to be used to build catalog numbers for circuit breakers or trip units.

Table 1. Circuit Breaker/Frame



Types GB, GHB, GC, GHC 15-100 Amperes, 1 Pole

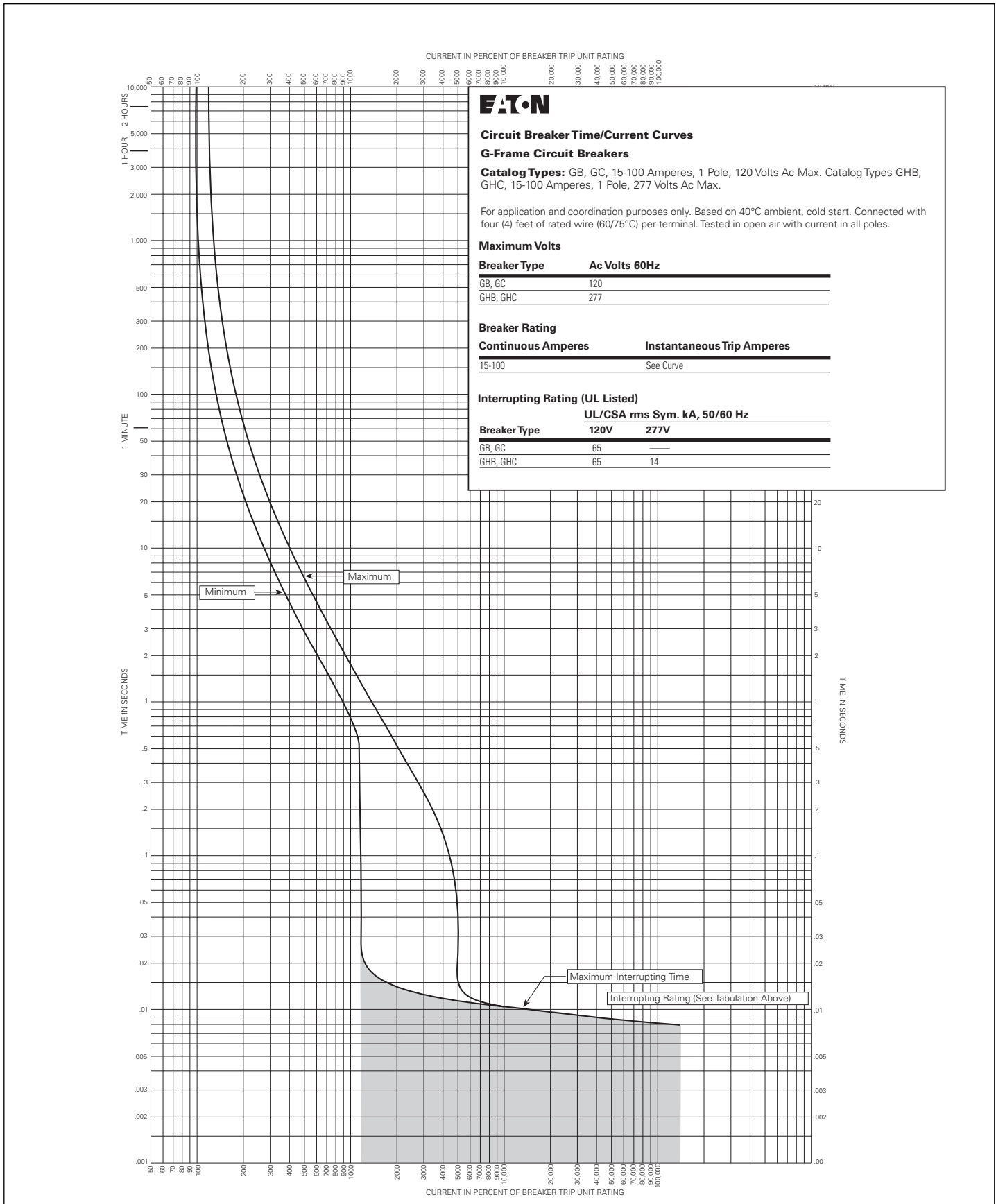


Figure 1. GB, GHB, GC, GHC 15-100A, 1 Pole - Curve Number SC-3500-83B, October 1997

Types GB, GHB, GC, GHC 15-100 Amperes, 2 and 3 Poles

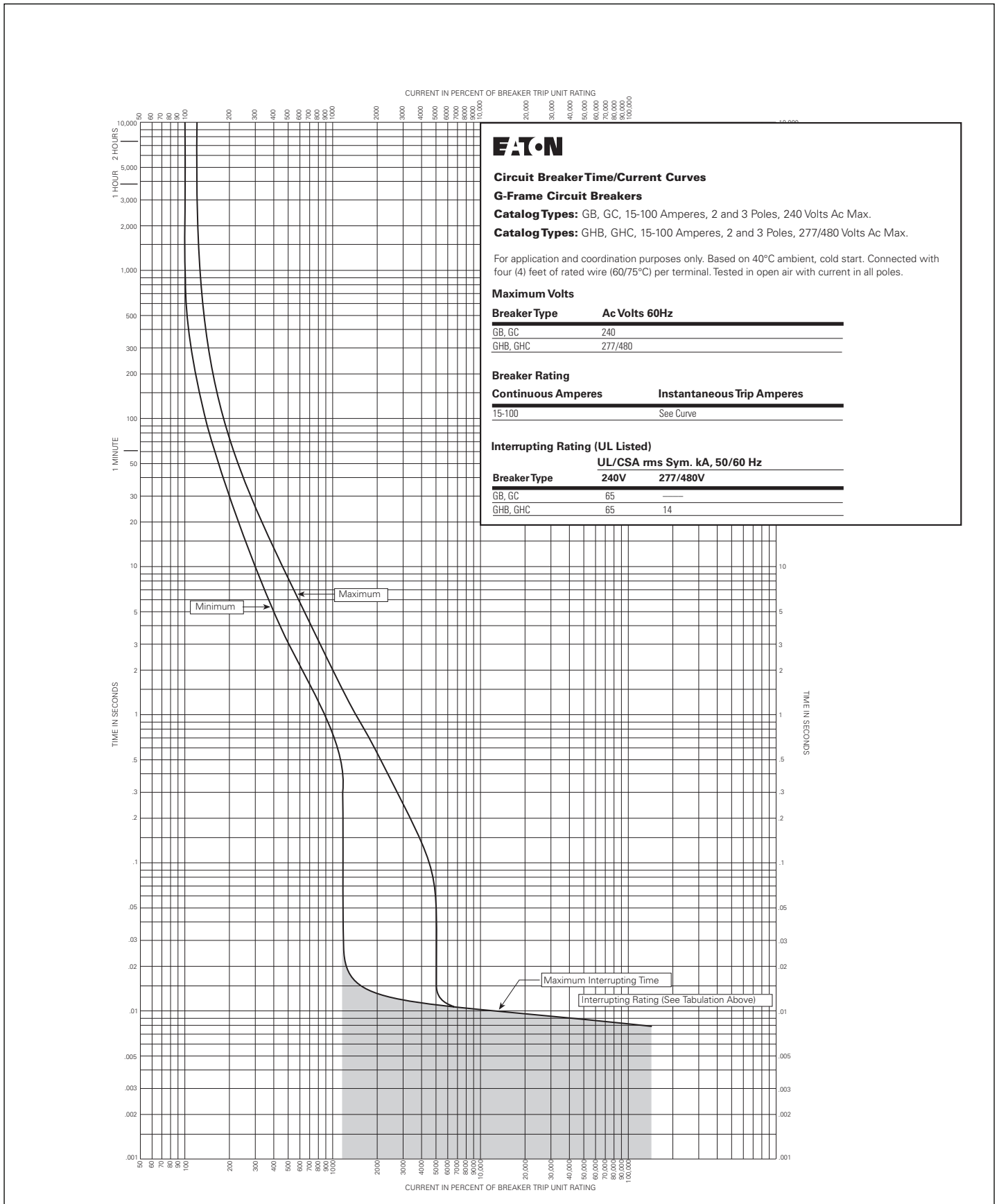


Figure 2. GB, GHB, GC, GHC 15-100A, 2, 3 Poles - Curve Number SC-3501-83B, October 1997

Type GHB/GHC/GD 2 and 3 poles, 15-100 Amperes

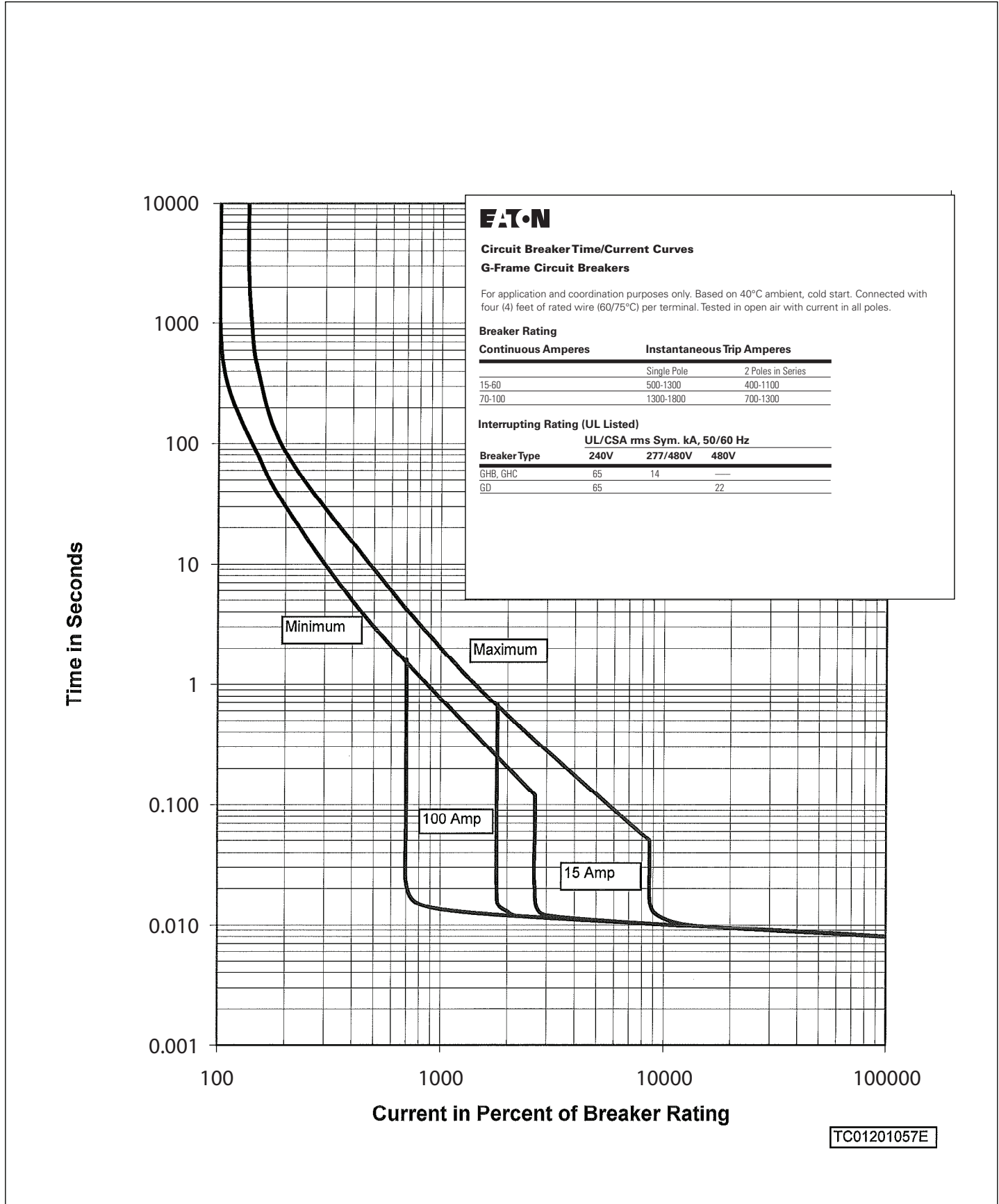


Figure 3. GHB, GHC, GD 15-100A, 2, 3 Poles - Curve Number TC01201057E

Type GD 15-100 Amperes, 2 and 3 Poles

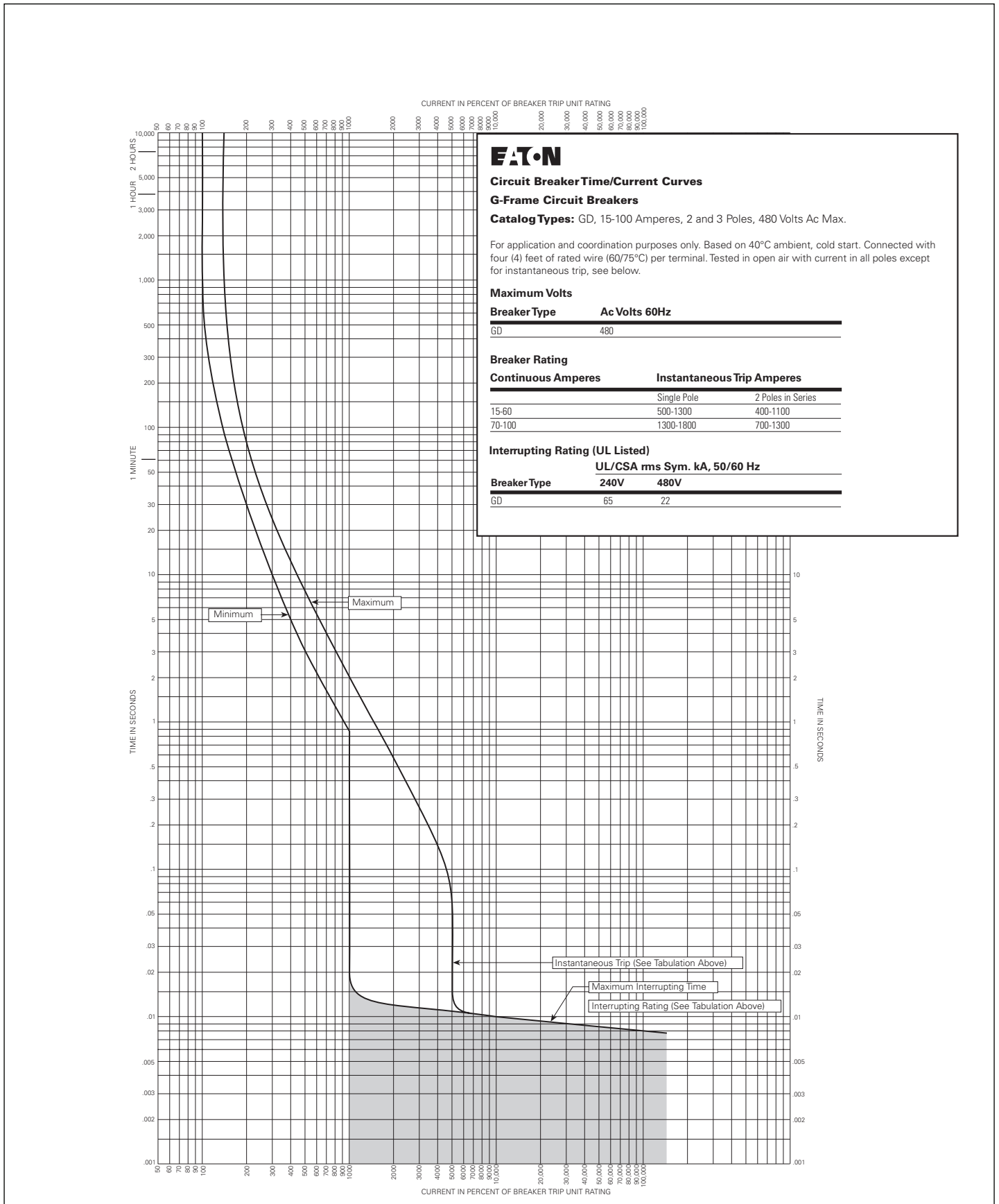


Figure 4. GD 15-100A, 2, 3 Poles - Curve Number SC-6030-95, October 1997

Types GHBGFEP, GHCGFEP 15-60 Amperes, 2 Pole (Single Phase)

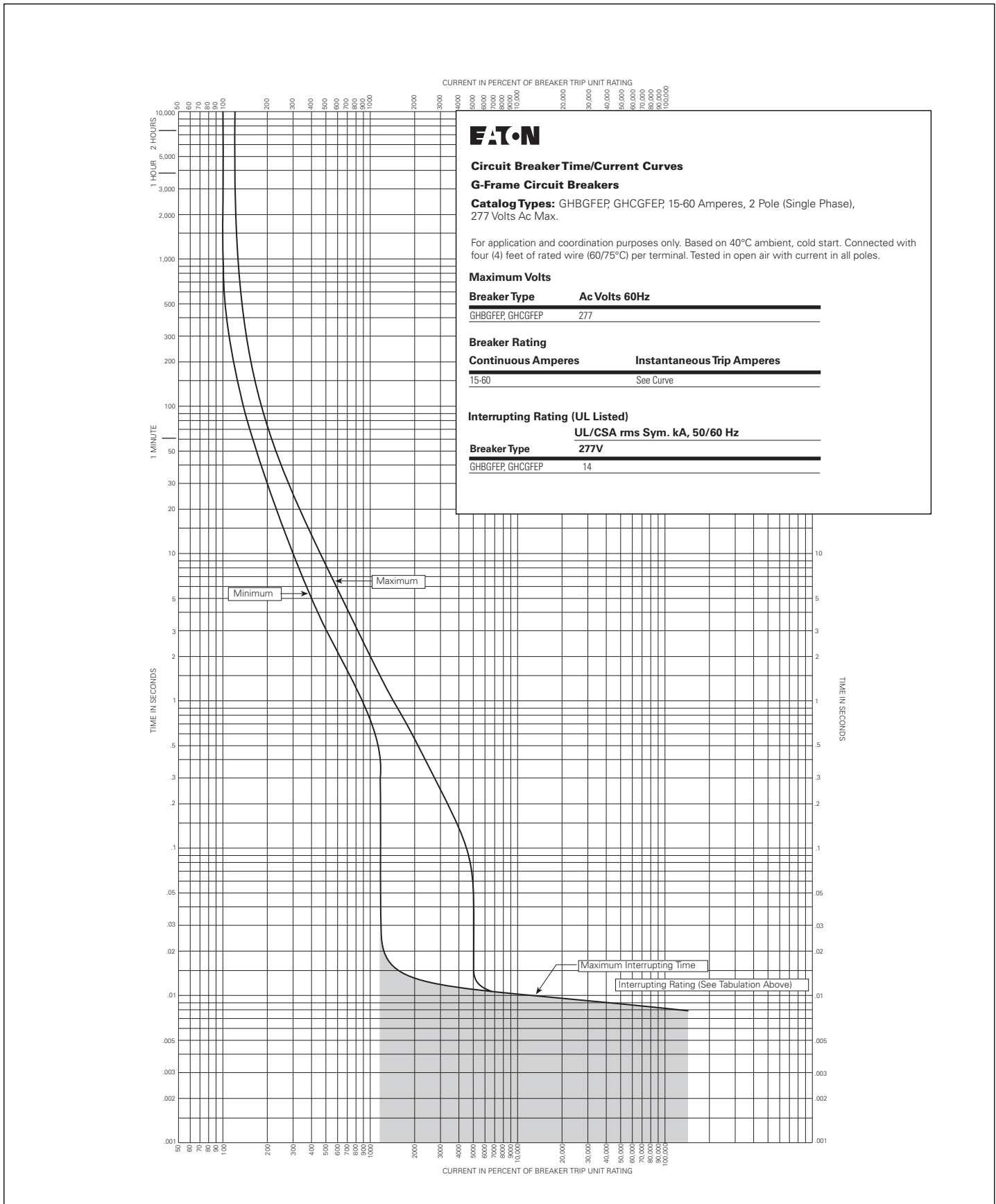


Figure 5. GHBGFEP, GHCGFEP 15-60A, 2 Pole - Curve Number SC-6759-97, October 1997

Type GHBS 15-30 Amperes, 1, 2 Poles

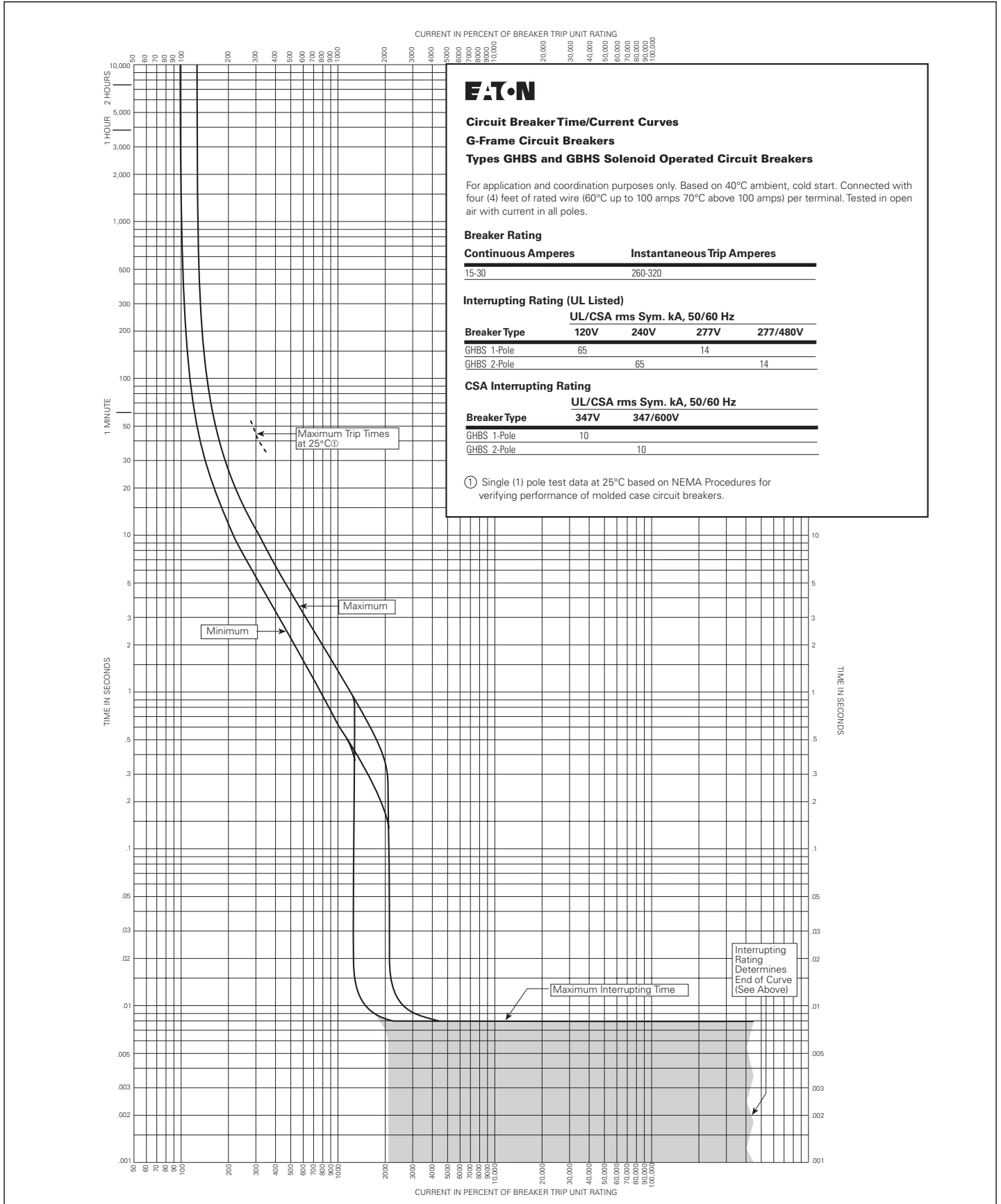


Figure 6. GHBS, GBHS 15-30A, 1, 2 Poles - Curve Number SC-5695-93B

Eaton
1000 Eaton Boulevard
Cleveland, OH 44122
United States
Eaton.com

© 2014 Eaton
All Rights Reserved
Printed in USA
Publication No. TD012032EN / KDC
April 2014



Eaton is a registered trademark.

All other trademarks are property
of their respective owners.