

# Series C G-Frame

15-100 amperes, 120-480 volts

## Contents

Description	Page
Catalog Number Selection . . . . .	3
<b>Time Current Curves: Thermal/Magnetic Trip Unit</b>	
GB, GHB, GC, GHC 15-100A, 1 Pole. . . . .	SC-3500-83B . . . . . 4
GB, GHB, GC, GHC 15-100A, 2, 3 Poles. . . . .	SC-3501-83B . . . . . 5
GHB, GHC, GD 15-100A, 2, 3 Poles . . . . .	TC01201057E . . . . . 6
GD 15-100A, 2, 3 Poles. . . . .	SC-6030-95 . . . . . 7
GHBGFEP, GHCGFEP 15-60A, 2 Pole . . . . .	SC-6759-97 . . . . . 8
GHBS, GBHS 15-30A, 1, 2 Poles . . . . .	SC-5695-93B . . . . . 9

### Note:

The following curves are UL489 Listed for use in North America.

The following circuit breakers are derived from Eaton, Westinghouse, or Cutler-Hammer brand.

**Time Current Curves are engineering reference documents for application and coordination purposes only.  
For field testing molded case circuit breakers, refer to NEMA AB 4 guidelines**



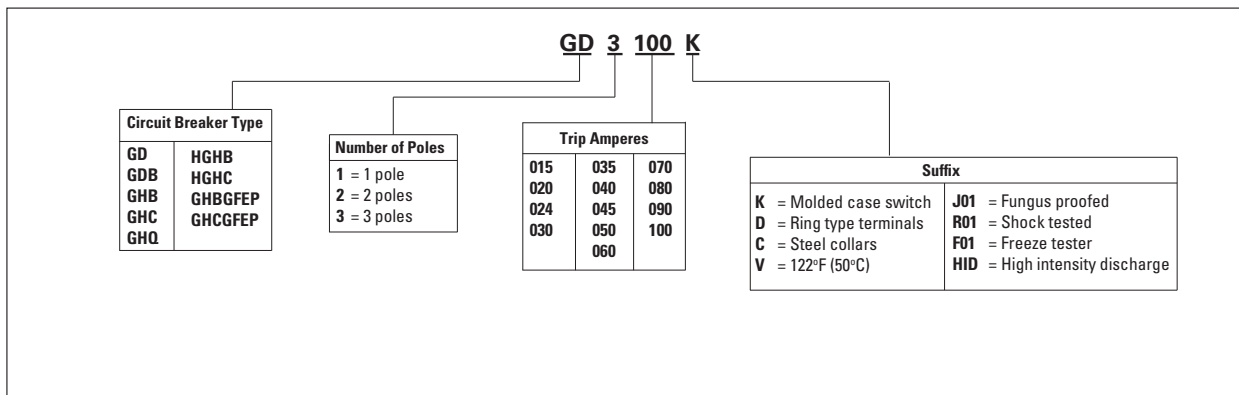
*Powering Business Worldwide*



## Catalog Number Selection

This information is presented only as an aid to understanding catalog numbers. It is not to be used to build catalog numbers for circuit breakers or trip units.

**Table 1. Circuit Breaker/Frame**



Types GB, GHB, GC, GHC 15-100 Amperes, 1 Pole

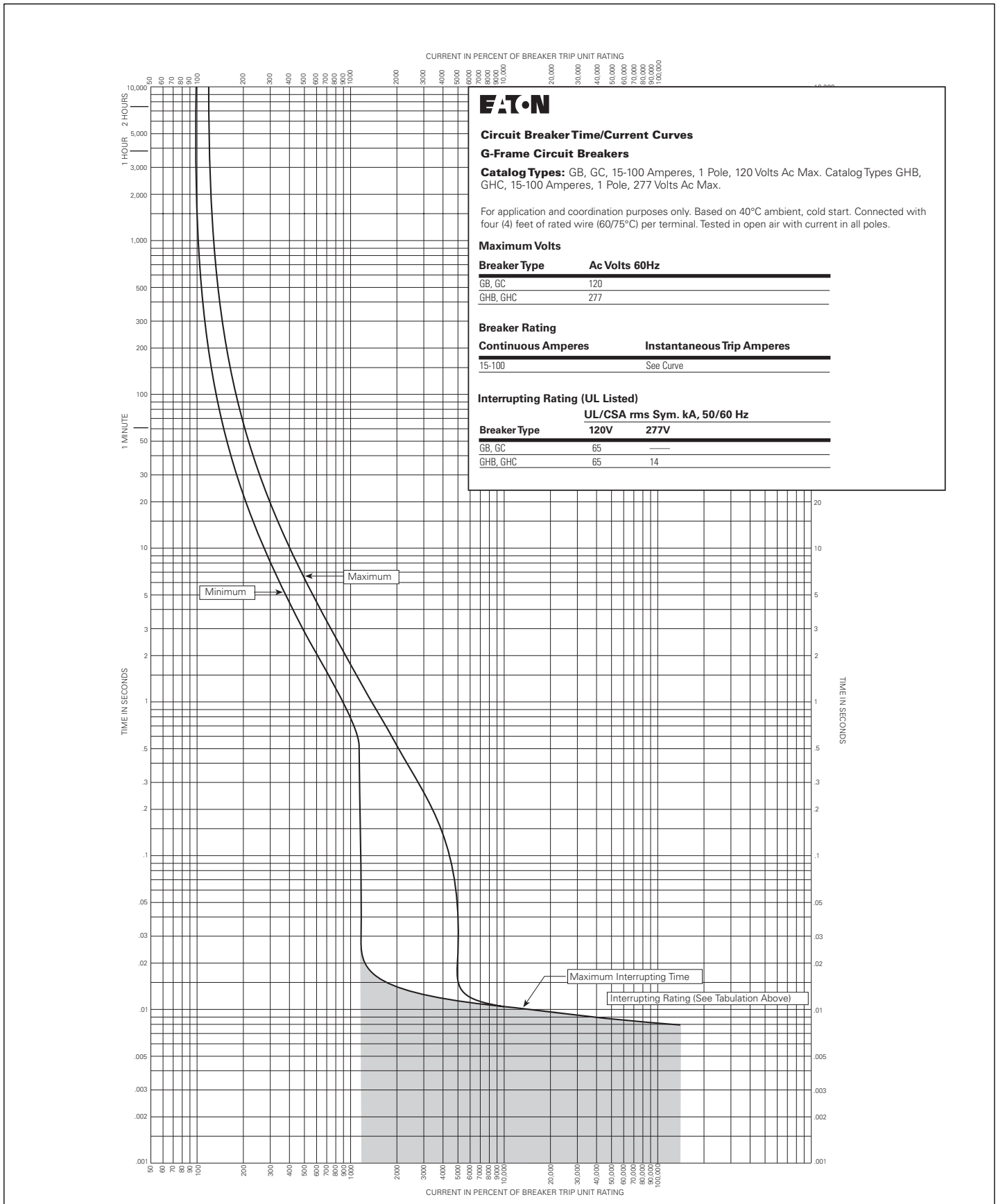


Figure 1. GB, GHB, GC, GHC 15-100A, 1 Pole - Curve Number SC-3500-83B, October 1997

Types GB, GHB, GC, GHC 15-100 Amperes, 2 and 3 Poles

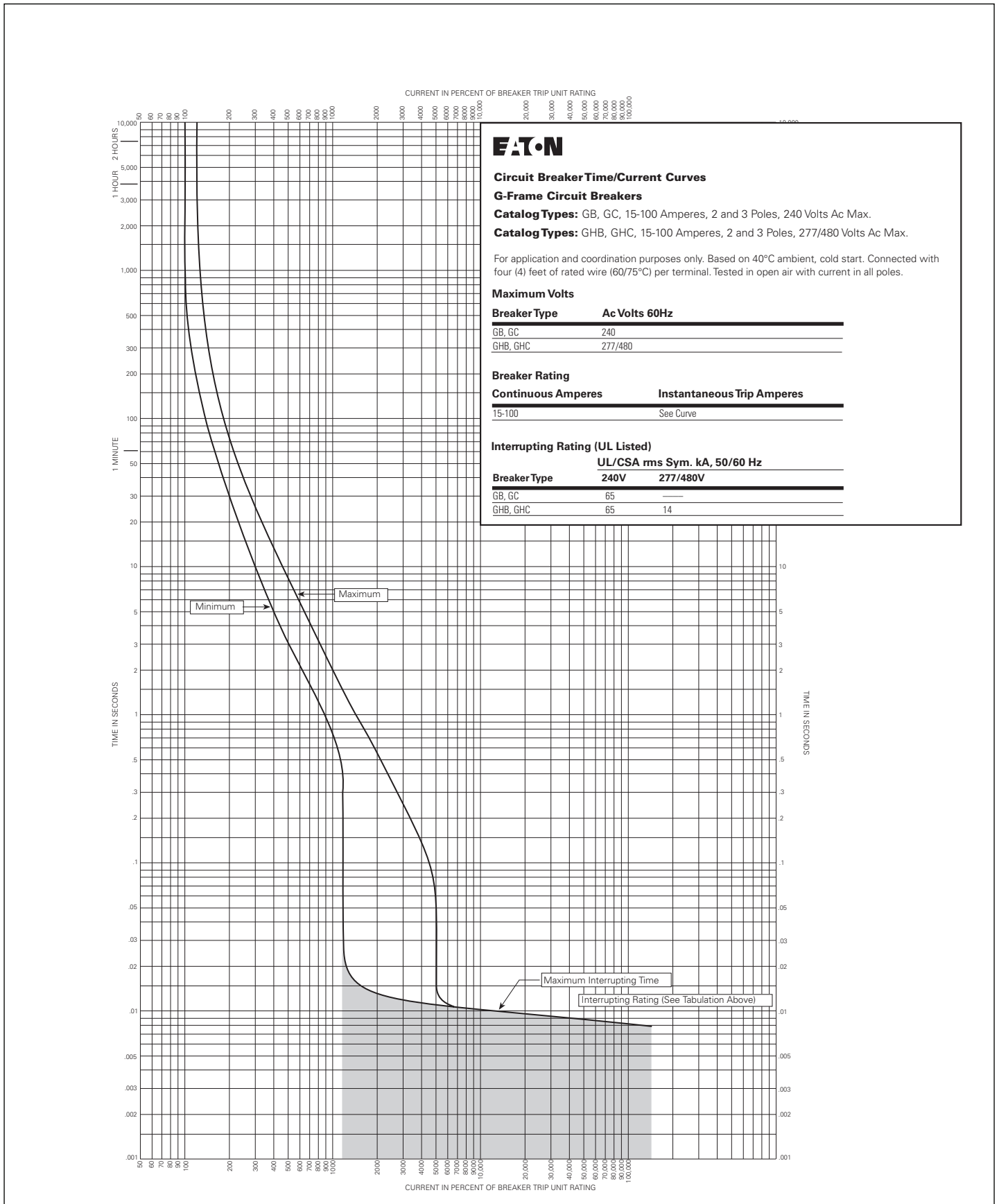


Figure 2. GB, GHB, GC, GHC 15-100A, 2, 3 Poles - Curve Number SC-3501-83B, October 1997

Type GHB/GHC/GD 2 and 3 poles, 15-100 Amperes

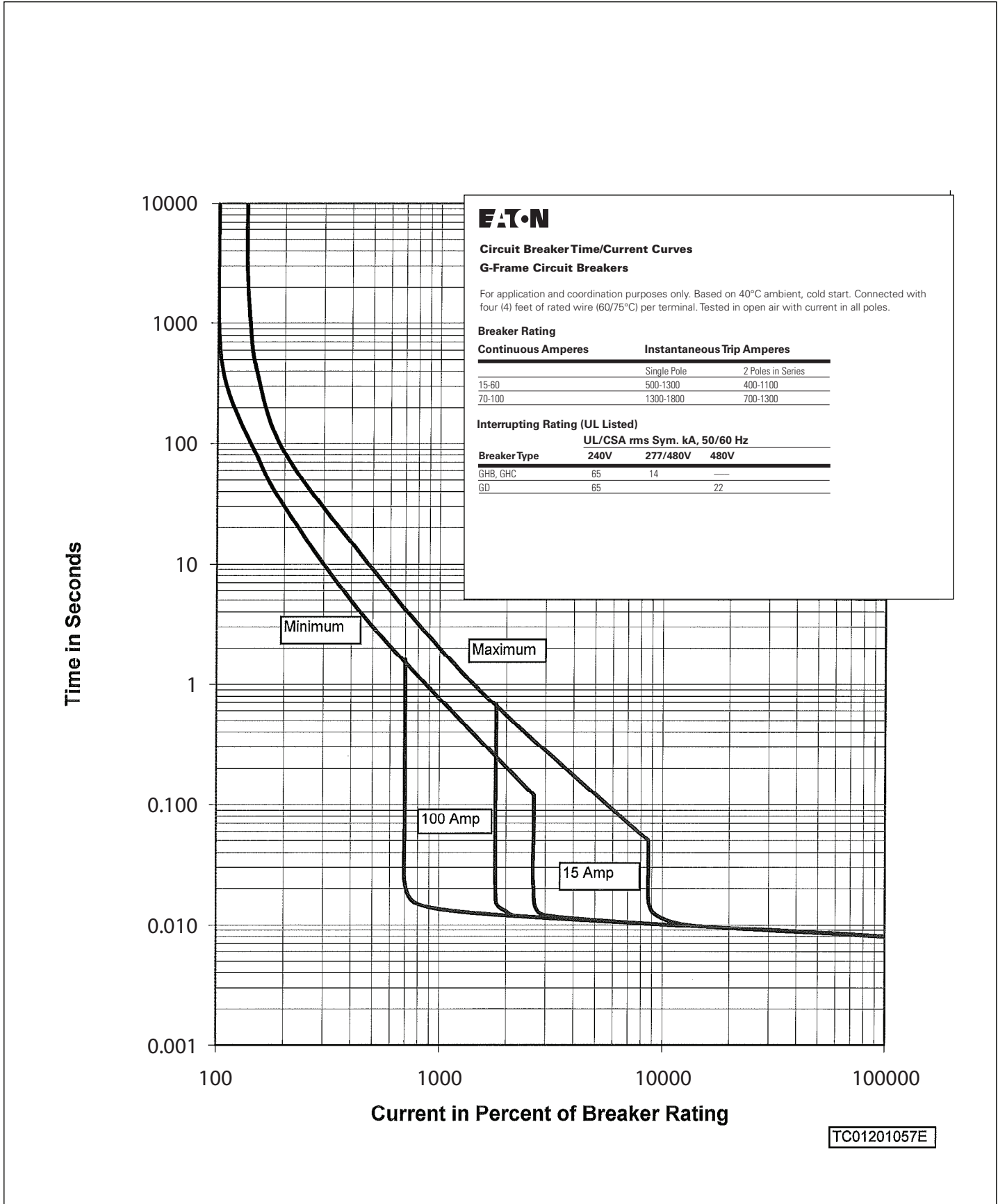


Figure 3. GHB, GHC, GD 15-100A, 2, 3 Poles - Curve Number TC01201057E

Type GD 15-100 Amperes, 2 and 3 Poles

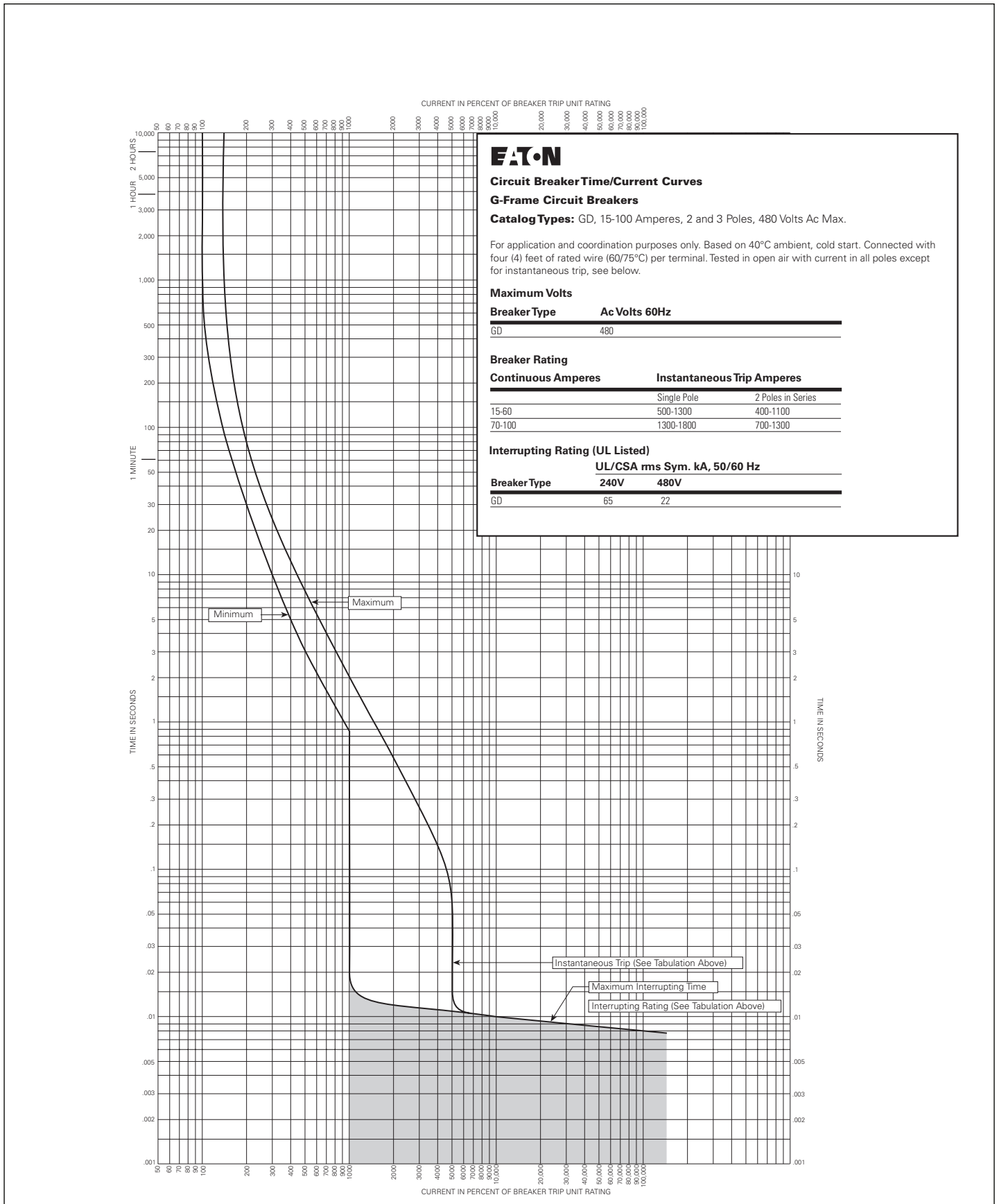
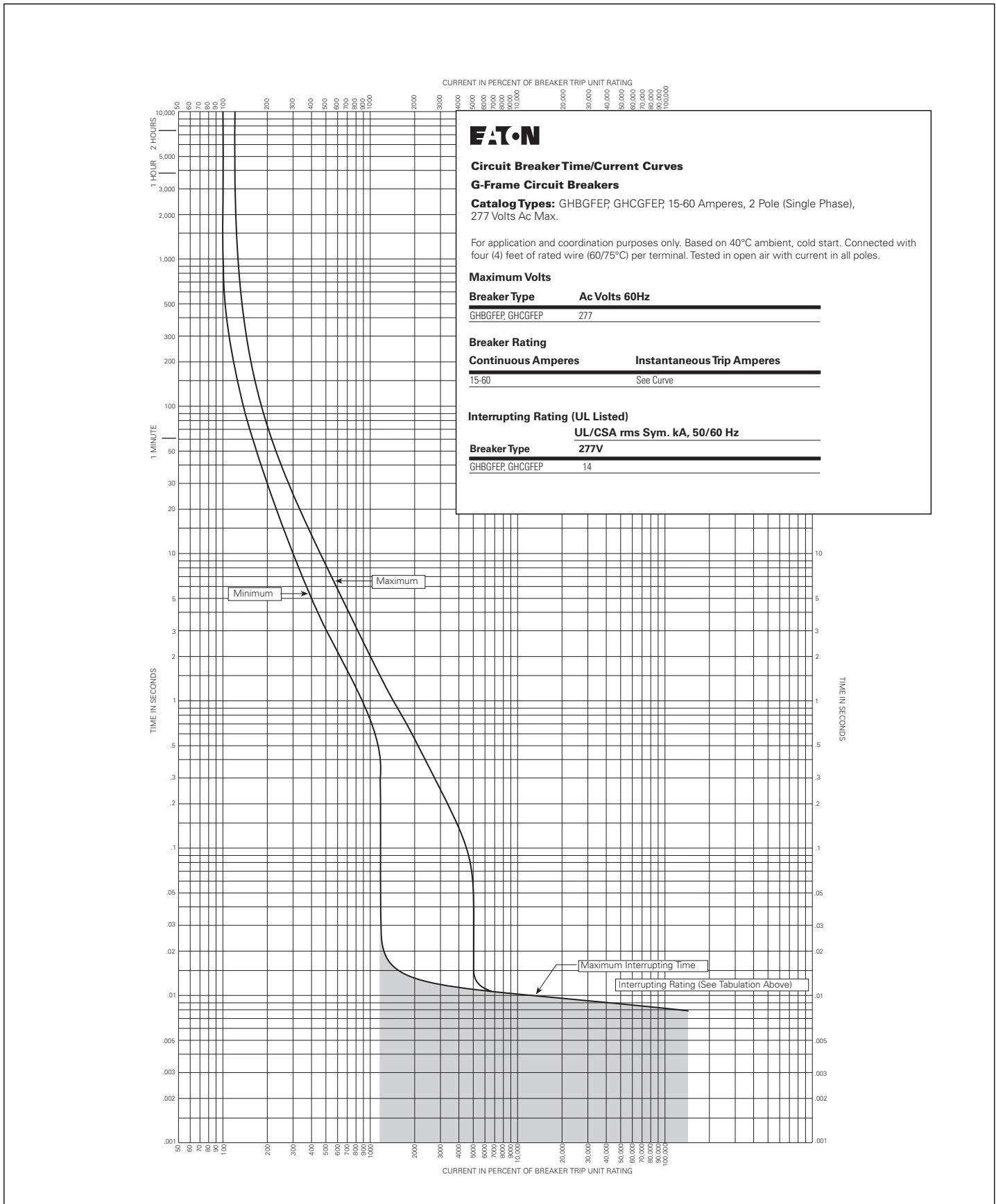


Figure 4. GD 15-100A, 2, 3 Poles - Curve Number SC-6030-95, October 1997

**Types GHBGFEP, GHCGFEP 15-60 Amperes, 2 Pole (Single Phase)**





Type GHBS 15-30 Amperes, 1, 2 Poles

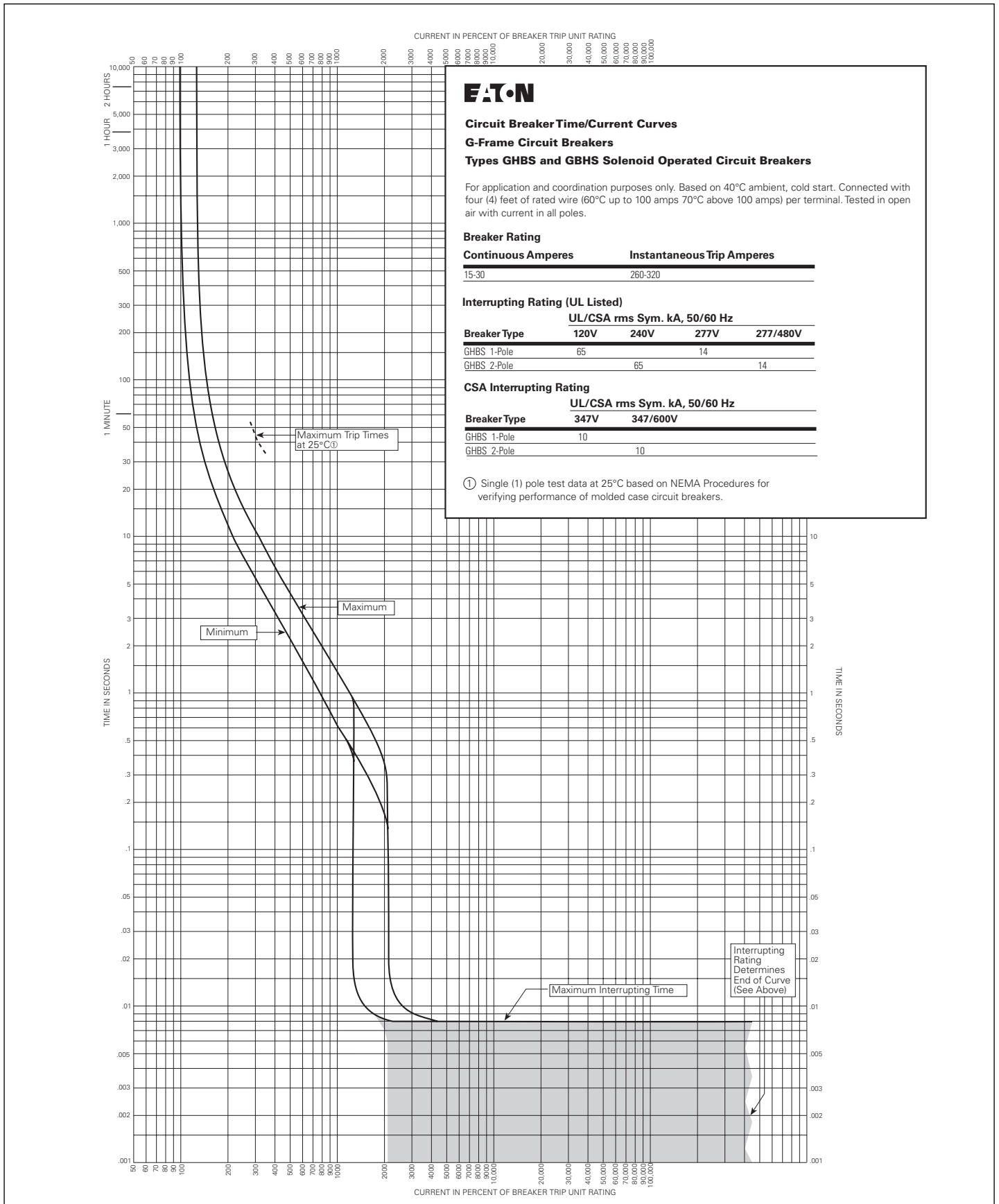


Figure 6. GHBS, GBHS 15-30A, 1, 2 Poles - Curve Number SC-5695-93B





**Eaton**  
1000 Eaton Boulevard  
Cleveland, OH 44122  
United States  
Eaton.com

© 2014 Eaton  
All Rights Reserved  
Printed in USA  
Publication No. TD012032EN / KDC  
April 2014



Eaton is a registered trademark.

All other trademarks are property  
of their respective owners.

# Series C G-Frame

15-100 amperes, 120-480 volts

## Contents

Description	Page
Catalog Number Selection . . . . .	3
<b>Time Current Curves: Thermal/Magnetic Trip Unit</b>	
GB, GHB, GC, GHC 15-100A, 1 Pole. . . . .	SC-3500-83B . . . . . 4
GB, GHB, GC, GHC 15-100A, 2, 3 Poles. . . . .	SC-3501-83B . . . . . 5
GHB, GHC, GD 15-100A, 2, 3 Poles . . . . .	TC01201057E . . . . . 6
GD 15-100A, 2, 3 Poles. . . . .	SC-6030-95 . . . . . 7
GHBGFEP, GHCGFEP 15-60A, 2 Pole . . . . .	SC-6759-97 . . . . . 8
GHBS, GBHS 15-30A, 1, 2 Poles . . . . .	SC-5695-93B . . . . . 9

### Note:

The following curves are UL489 Listed for use in North America.

The following circuit breakers are derived from Eaton, Westinghouse, or Cutler-Hammer brand.

**Time Current Curves are engineering reference documents for application and coordination purposes only.  
For field testing molded case circuit breakers, refer to NEMA AB 4 guidelines**



*Powering Business Worldwide*

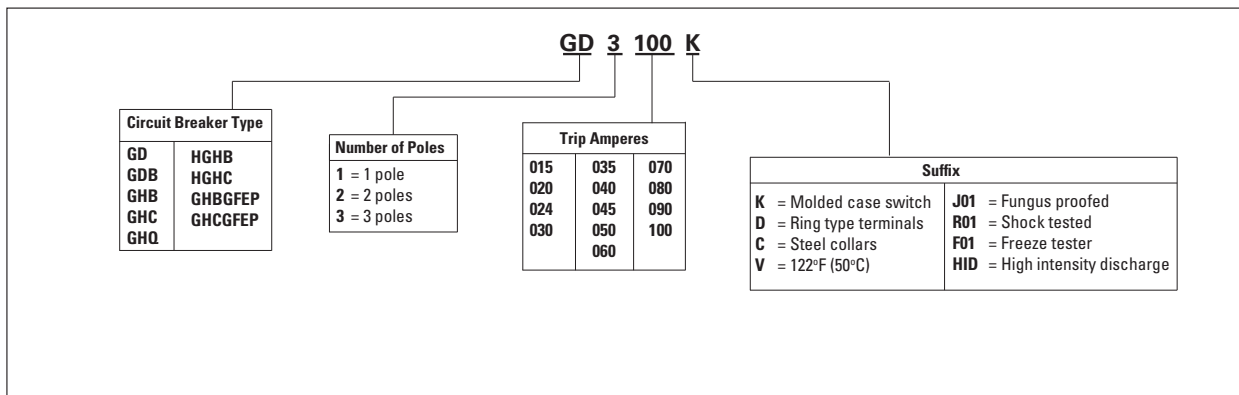
**Note:** Unless noted below, all curves remain unchanged from their prior revision.

Revision	Curve Number	Page	Date

## Catalog Number Selection

This information is presented only as an aid to understanding catalog numbers. It is not to be used to build catalog numbers for circuit breakers or trip units.

**Table 1. Circuit Breaker/Frame**



Types GB, GHB, GC, GHC 15-100 Amperes, 1 Pole

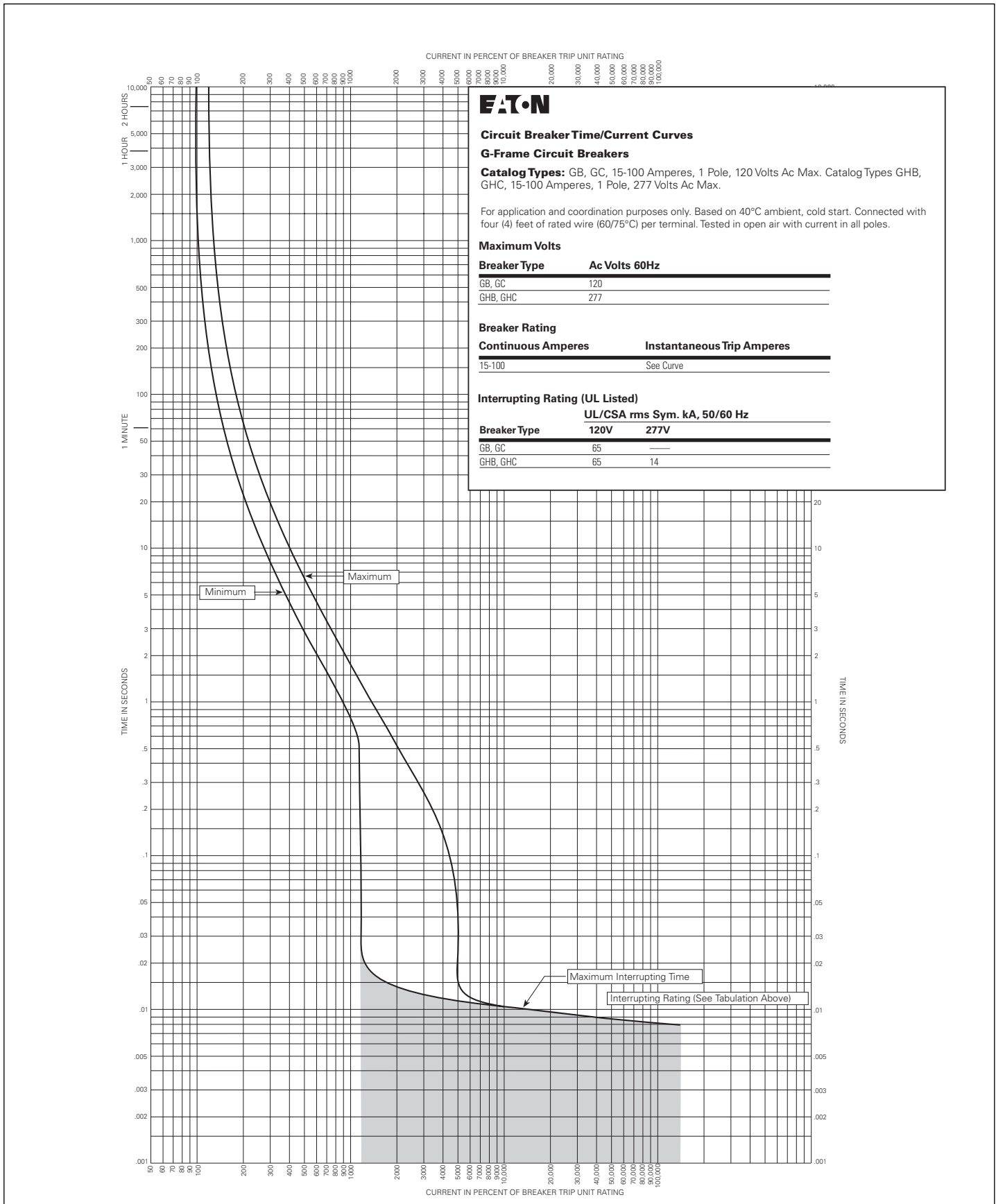


Figure 1. GB, GHB, GC, GHC 15-100A, 1 Pole - Curve Number SC-3500-83B, October 1997



Types GB, GHB, GC, GHC 15-100 Amperes, 2 and 3 Poles

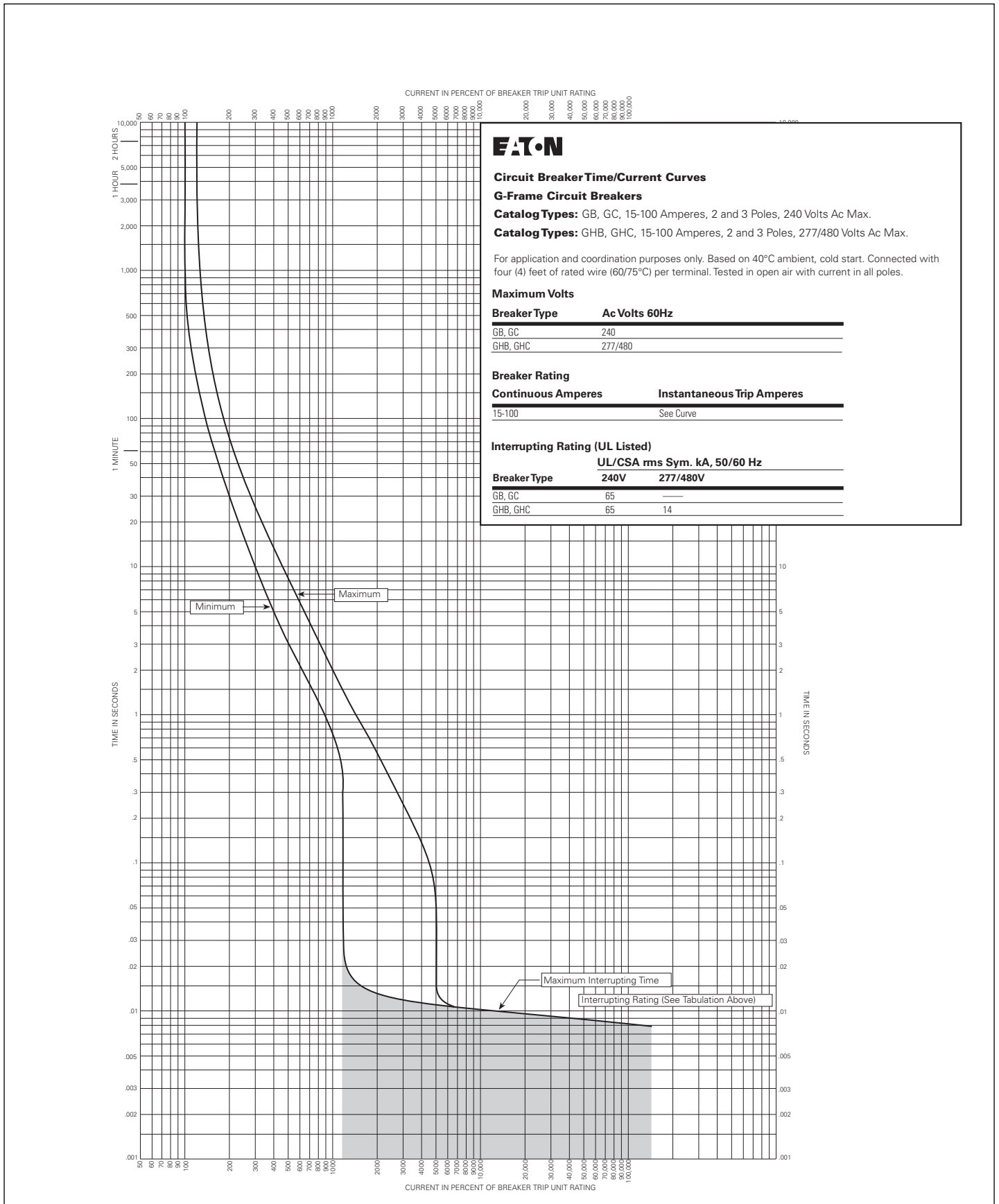


Figure 2. GB, GHB, GC, GHC 15-100A, 2, 3 Poles - Curve Number SC-3501-83B, October 1997

Type GHB/GHC/GD 2 and 3 poles, 15-100 Amperes

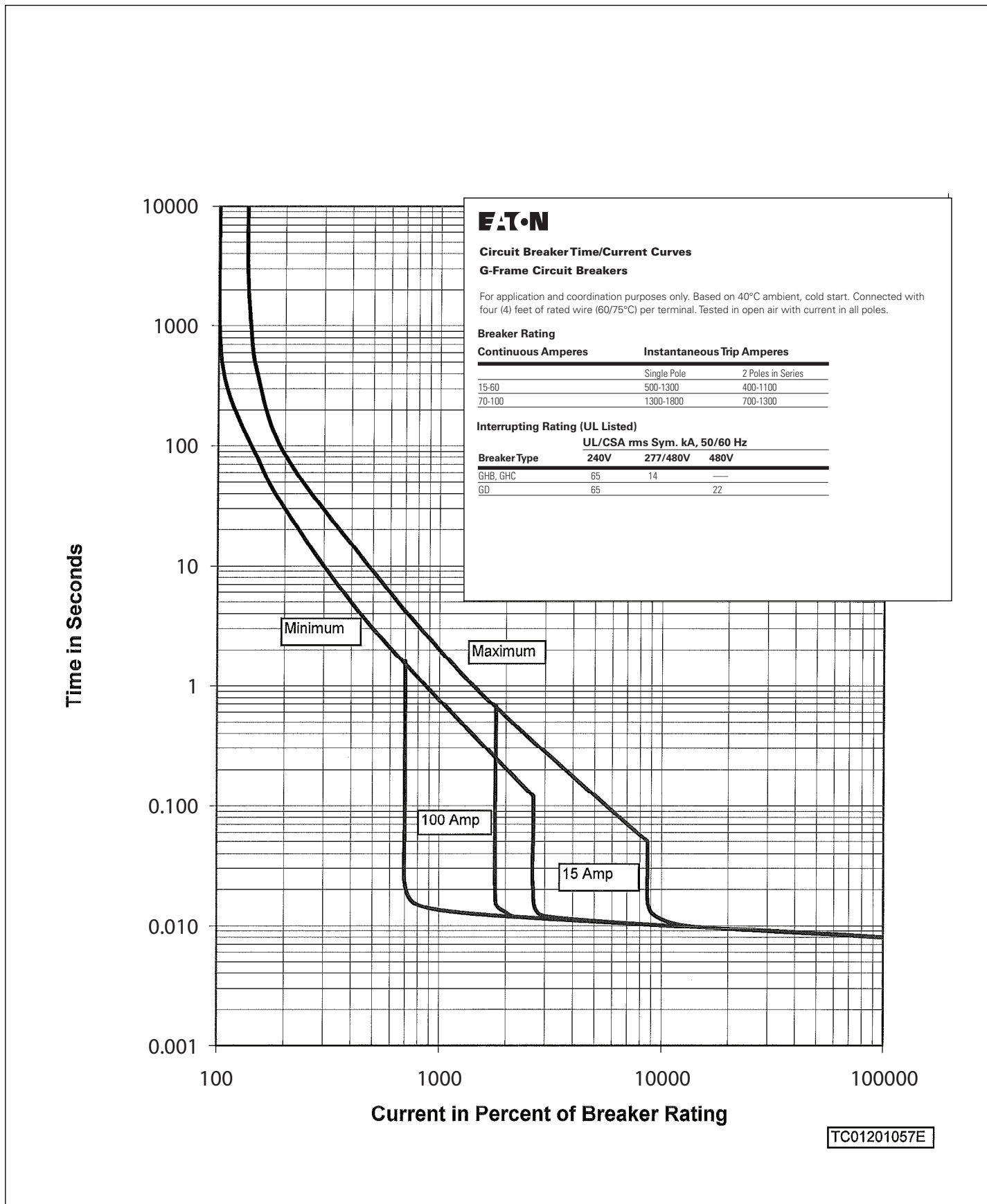


Figure 3. GHB, GHC, GD 15-100A, 2, 3 Poles - Curve Number TC01201057E

Type GD 15-100 Amperes, 2 and 3 Poles

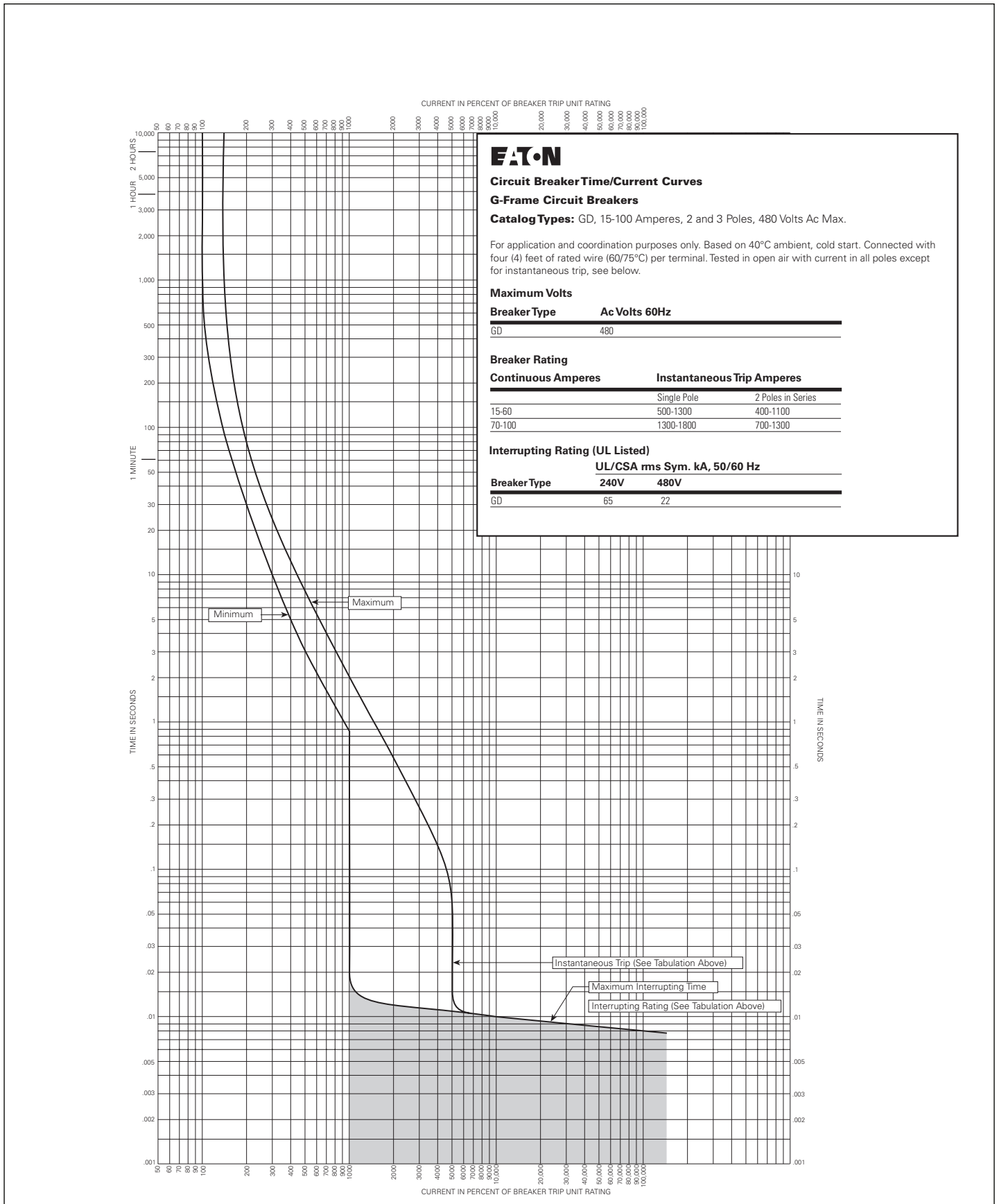
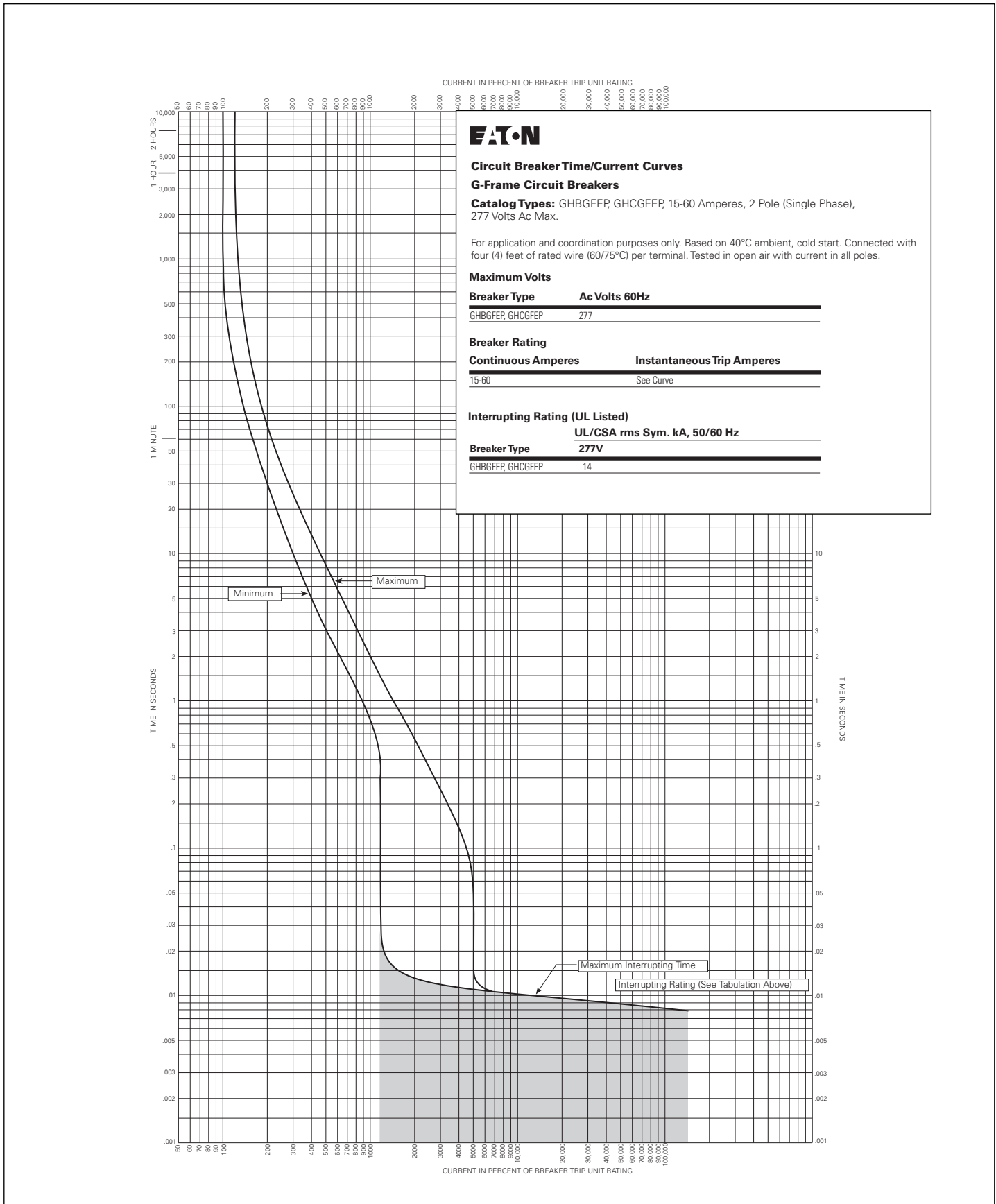


Figure 4. GD 15-100A, 2, 3 Poles - Curve Number SC-6030-95, October 1997

**Types GHBGFEP, GHCGFEP 15-60 Amperes, 2 Pole (Single Phase)**



**Figure 5. GHBGFEP, GHCGFEP 15-60A, 2 Pole - Curve Number SC-6759-97, October 1997**

Type GHBS 15-30 Amperes, 1, 2 Poles

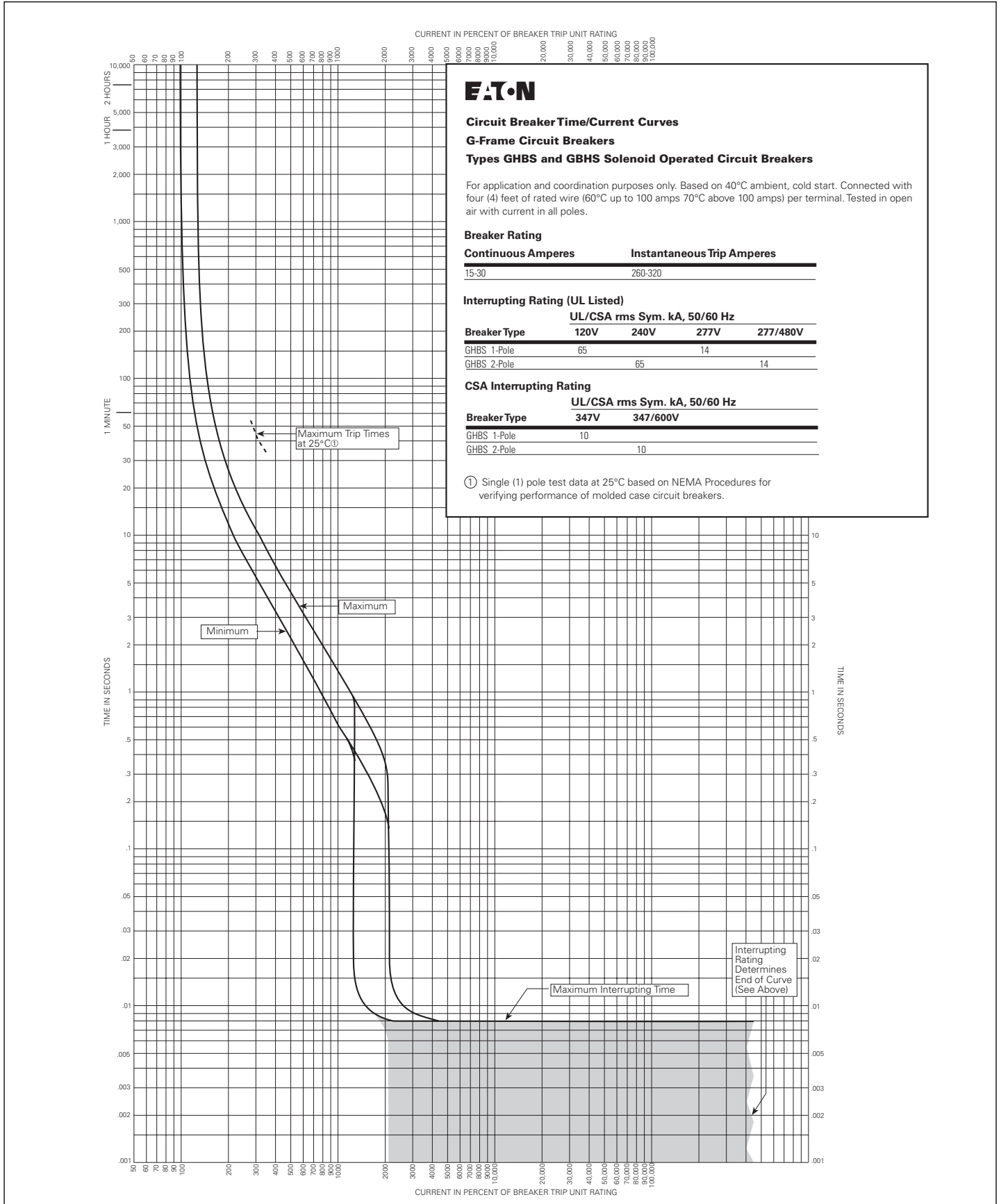


Figure 6. GHBS, GBHS 15-30A, 1, 2 Poles - Curve Number SC-5695-93B





**Eaton**  
1000 Eaton Boulevard  
Cleveland, OH 44122  
United States  
Eaton.com

© 2014 Eaton  
All Rights Reserved  
Printed in USA  
Publication No. TD012032EN / KDC  
April 2014



Eaton is a registered trademark.  
All other trademarks are property  
of their respective owners.