



6" SHALLOW UNIVERSAL IC HOUSING

INCANDESCENT LAMPS

IC21 SERIES


Project: _____

Fixture Type: _____

Location: _____

Contact/Phone: _____

PRODUCT DESCRIPTION

IC Housing Air-Loc® Ready • Energy efficient, sealed housing
• Can be completely covered with insulation • When used with Air-Loc Gasket accessory or pre-installed gasket on mounting frame, stops infiltration and exfiltration of air, reducing heating and cooling costs • Trims shown with Air-Loc symbol  do not require a gasket.

PRODUCT SPECIFICATIONS

Lamp Lamp ratings based on trim selected – see page 2.

Socket Medium base porcelain with nickel-plated copper screw shell
• Floating socket with spring attaches to trim for installation.

Trims Trim selection shown on page 2.

Labels UL listed for through-branch wiring, damp locations and IP
• Product thermally protected against improper use of lamps
• Union made • UL Listed/CSA certified • Trim No. 241 is wet location approved for covered ceiling applications.

Testing All reports are based on published industry procedures; field performance may differ from laboratory performance.
Specifications subject to change without notice.

INSTALLATION

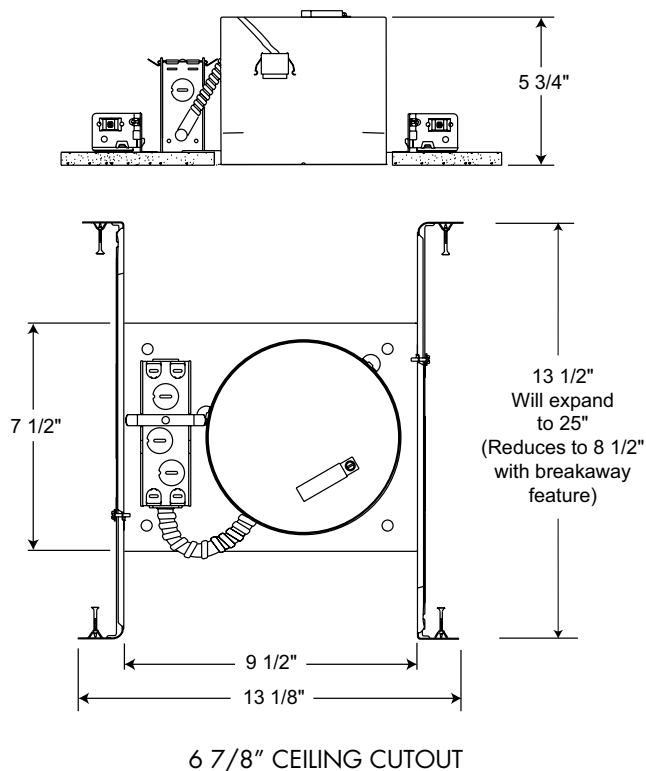
Real Nail® 3 Bar Hangers Telescoping, Patented (US Patent D552,969) Real Nail 3 system permits quick placement of housing anywhere within 24" O.C. joists or suspended ceilings • Integral T-bar notch and clip secures housing in suspended ceiling grid – no accessory clips required • 24" expansion stop allows quick placement of fixture in standard grid spacing • Bars scored in two locations for fast, clean breaking, allowing housing installation in tight applications • Bars captive to mounting frame • Edge-mounted for extra strength • Captive bugle-headed ring shank nail for quick one-step installation and easy removal with claw hammer for fixture relocation • Quick-Loc slot (location identified on the mounting frame) and oversized locking set screw lock fixture in position • Bar hanger foot contoured to align to bottom of construction joist • Alternate mounting holes included.

Junction Box Pre-wired junction box provided with (5) 1/2" and (1) 3/4" knockouts, (4) Non-metallic sheathed cable connectors and ground wire, U.L. listed/CSA certified for through branch wiring, maximum 8 No. 12 AWG 90° C branch circuit conductors (4 in, 4 out) • Junction box provided with removable access plates • Knockouts equipped with pryout slots.

Mounting Frame 22-gauge die-formed galvanized steel mounting frame • Rough-in section (junction box, mounting frame, housing and bar hangers) fully assembled for ease of installation • Sight lines embossed on mounting frame to allow for easy viewing when aligning fixtures • Pre-installed Air-Loc gasket for **G options**.

Housing IC housing, .032" aluminum sealed for Air-Loc Compliance • Housing is vertically adjustable to accommodate up to a 1" ceiling thickness.

DIMENSIONS



ACCESSORIES

Catalog Number	Description
ALG6	Air-Loc Gasket

To order, specify catalog number.

PRODUCT CODES

Catalog Number	Input Voltage	Lamp Rating
IC21	120V	A19/R20/PAR20/BR30/PAR30/PAR30L (See page 2 for max. trim rating)
IC21 G	120V	A19/R20/PAR20/BR30/PAR30/PAR30L (See page 2 for max. trim rating)
IC21 W G	120V	A19/R20/PAR20/BR30/PAR30/PAR30L (See page 2 for max. trim rating)

Housing and trim can be ordered together or separate, but will always ship separately.

6" SHALLOW UNIVERSAL IC HOUSING

INCANDESCENT LAMPS IC21 SERIES

TRIMS/LAMPS


	Catalog Number	Description	Max. Lamp Rating
	244S BWH	Shallow Black Baffle, White Trim Ring	50W PAR30
	244S WWH	Shallow White Baffle, White Trim Ring	
	247S CWH	Shallow Clear Alzak® Cone, White Trim Ring	75W PAR30, 65W BR30
	247S GWH	Shallow Gold Alzak® Cone, White Trim Ring	
	247S BWH	Shallow Black Alzak® Cone, White Trim Ring	
	247S HZWH	Shallow Haze Cone, White Trim Ring	
	247S WHZWH	Shallow Wheat Haze Cone, White Trim Ring	
	250 WH	Open Frame, White	65W BR30
	250 SC	Open Frame, Satin Chrome	
	250 BRZ	Open Frame, Bronze	
	229 WH	Regressed Eyeball, White	75W PAR30L, 65W BR30
	229 SC	Regressed Eyeball, Satin Chrome	
	229 BRZ	Regressed Eyeball, Bronze	
	229 BL	Regressed Eyeball, Black	
	249 BWH	Regressed Eyeball, Black Baffle, White Trim Ring	75W PAR30L, 65W BR30
	249 WWH	Regressed Eyeball, White Baffle, White Trim Ring	
	241 WH ♦	Drop Opal w/Reflector, White	40W A19
	241 PW ♦	Drop Opal w/Reflector, Plastic White	

Trim Size: 7 $\frac{5}{8}$ " O.D. (except Cat. Nos. 228, 229, and 241 series - 8" O.D.).

Alzak is a registered trademark of Alcoa Corp.

Note: In Canada when insulation is present,

Type IC fixtures must be used.

 JUNO IC housings meet IECC Energy Code requirements per ASTM E283.
Air-Loc® rated trims are pre-gasketed for minimum air leakage with IC housings.

♦ UL Listed for use in wet location.

** NOTE: TR6 Trim Ring compatible with 244S, 247S trims.

Housing and trim can be ordered together or separate, but will always ship separately.



6" SHALLOW UNIVERSAL IC HOUSING

INCANDESCENT LAMPS

IC21 SERIES


Project: _____

Fixture Type: _____

Location: _____

Contact/Phone: _____

PRODUCT DESCRIPTION

IC Housing Air-Loc® Ready • Energy efficient, sealed housing
• Can be completely covered with insulation • When used with Air-Loc Gasket accessory or pre-installed gasket on mounting frame, stops infiltration and exfiltration of air, reducing heating and cooling costs • Trims shown with Air-Loc symbol  do not require a gasket.

PRODUCT SPECIFICATIONS

Lamp Lamp ratings based on trim selected – see page 2.

Socket Medium base porcelain with nickel-plated copper screw shell
• Floating socket with spring attaches to trim for installation.

Trims Trim selection shown on page 2.

Labels UL listed for through-branch wiring, damp locations and IP
• Product thermally protected against improper use of lamps
• Union made • UL Listed/CSA certified • Trim No. 241 is wet location approved for covered ceiling applications.

Testing All reports are based on published industry procedures; field performance may differ from laboratory performance.
Specifications subject to change without notice.

INSTALLATION

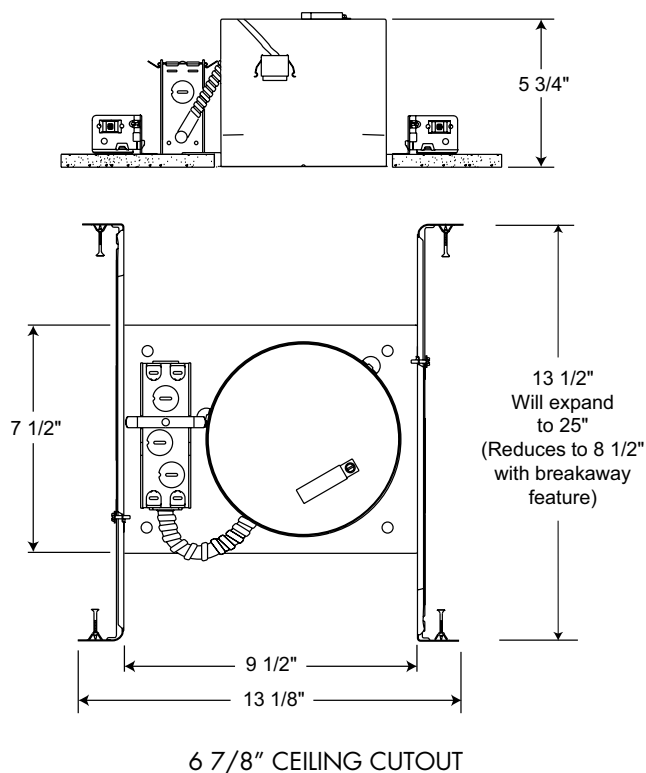
Real Nail® 3 Bar Hangers Telescoping, Patented (US Patent D552,969) Real Nail 3 system permits quick placement of housing anywhere within 24" O.C. joists or suspended ceilings • Integral T-bar notch and clip secures housing in suspended ceiling grid – no accessory clips required • 24" expansion stop allows quick placement of fixture in standard grid spacing • Bars scored in two locations for fast, clean breaking, allowing housing installation in tight applications • Bars captive to mounting frame • Edge-mounted for extra strength • Captive bugle-headed ring shank nail for quick one-step installation and easy removal with claw hammer for fixture relocation • Quick-Loc slot (location identified on the mounting frame) and oversized locking set screw lock fixture in position • Bar hanger foot contoured to align to bottom of construction joist • Alternate mounting holes included.

Junction Box Pre-wired junction box provided with (5) 1/2" and (1) 3/4" knockouts, (4) Non-metallic sheathed cable connectors and ground wire, U.L. listed/CSA certified for through branch wiring, maximum 8 No. 12 AWG 90° C branch circuit conductors (4 in, 4 out) • Junction box provided with removable access plates • Knockouts equipped with pryout slots.

Mounting Frame 22-gauge die-formed galvanized steel mounting frame • Rough-in section (junction box, mounting frame, housing and bar hangers) fully assembled for ease of installation • Sight lines embossed on mounting frame to allow for easy viewing when aligning fixtures • Pre-installed Air-Loc gasket for **G options**.

Housing IC housing, .032" aluminum sealed for Air-Loc Compliance • Housing is vertically adjustable to accommodate up to a 1" ceiling thickness.

DIMENSIONS



ACCESSORIES

Catalog Number	Description
ALG6	Air-Loc Gasket

To order, specify catalog number.

PRODUCT CODES

Catalog Number	Input Voltage	Lamp Rating
IC21	120V	A19/R20/PAR20/BR30/PAR30/PAR30L (See page 2 for max. trim rating)
IC21 G	120V	A19/R20/PAR20/BR30/PAR30/PAR30L (See page 2 for max. trim rating)
IC21 W G	120V	A19/R20/PAR20/BR30/PAR30/PAR30L (See page 2 for max. trim rating)

Housing and trim can be ordered together or separate, but will always ship separately.



6" SHALLOW UNIVERSAL IC HOUSING

INCANDESCENT LAMPS IC21 SERIES

TRIMS/LAMPS


	Catalog Number	Description	Max. Lamp Rating
	244S BWH	Shallow Black Baffle, White Trim Ring	50W PAR30
	244S WWH	Shallow White Baffle, White Trim Ring	
	247S CWH	Shallow Clear Alzak® Cone, White Trim Ring	75W PAR30, 65W BR30
	247S GWH	Shallow Gold Alzak® Cone, White Trim Ring	
	247S BWH	Shallow Black Alzak® Cone, White Trim Ring	
	247S HZWH	Shallow Haze Cone, White Trim Ring	
	247S WHZWH	Shallow Wheat Haze Cone, White Trim Ring	
	250 WH	Open Frame, White	65W BR30
	250 SC	Open Frame, Satin Chrome	
	250 BRZ	Open Frame, Bronze	
	229 WH	Regressed Eyeball, White	75W PAR30L, 65W BR30
	229 SC	Regressed Eyeball, Satin Chrome	
	229 BRZ	Regressed Eyeball, Bronze	
	229 BL	Regressed Eyeball, Black	
	249 BWH	Regressed Eyeball, Black Baffle, White Trim Ring	75W PAR30L, 65W BR30
	249 WWH	Regressed Eyeball, White Baffle, White Trim Ring	
	241 WH ♦	Drop Opal w/Reflector, White	40W A19
	241 PW ♦	Drop Opal w/Reflector, Plastic White	

Trim Size: 7 $\frac{5}{8}$ " O.D. (except Cat. Nos. 228, 229, and 241 series - 8" O.D.).

Alzak is a registered trademark of Alcoa Corp.

Note: In Canada when insulation is present,

Type IC fixtures must be used.

 JUNO IC housings meet IECC Energy Code requirements per ASTM E283.
Air-Loc® rated trims are pre-gasketed for minimum air leakage with IC housings.

♦ UL Listed for use in wet location.

** NOTE: TR6 Trim Ring compatible with 244S, 247S trims.

Housing and trim can be ordered together or separate, but will always ship separately.