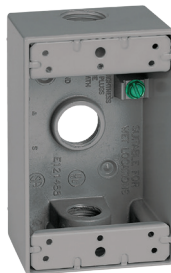

 TECHNICAL DATA SHEET

Device box, universal 1-Gang

Weatherproof

Red Dot®



Rugged outlet box to accept wiring devices, switches, electronic components, and terminal blocks.

Certifications / Standards:



Features:

- Single gang design
- Die-cast construction
- Factory Installed ground screw
- Suitable for wet locations when used with appropriate cover
- Clean cover edges help provide good gasket sealing
- Precision-cast and machined surfaces permit safer wire pulling
- Convenient mounting lugs for a variety of mounting methods
- Securely fastened mounting plates reduce costly call back

Applications:

- Dry-tite™ boxes protect wiring devices, switches, electronic components, and terminal blocks
- Outlet boxes provide spacious accessible wiring chamber

Compliance:

- NEMA 3R rated

Material:

- Aluminum alloy
- Powder-coated finish

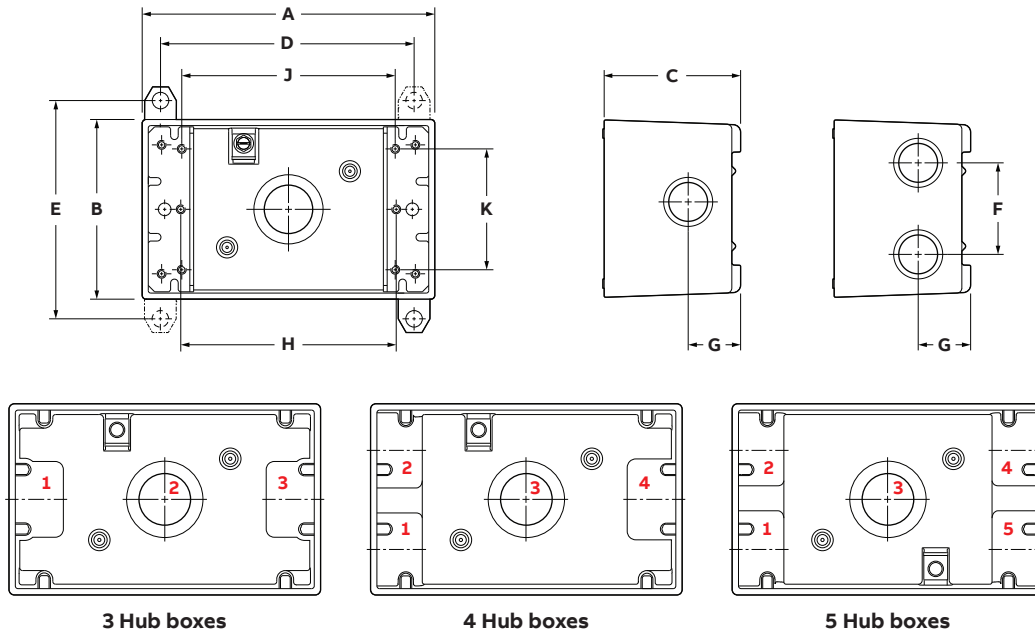
Device box, single gang
Weatherproof

Product selection (inches)

| Part no: | Color | Hub size | Number of hubs | A | B | C | D | E | F | G | H | J | K | Volume (Cu. In.) |
|------------|--------|----------|----------------|------|------|------|------|------|------|------|------|------|------|------------------|
| IH3-1-LM | Silver | ½ | 3 | 4.54 | 2.78 | 2.14 | 3.94 | 3.39 | — | 0.83 | 3.28 | 3.25 | 1.87 | 18.3 |
| S100E | Silver | | | | | | | | | | | | | |
| S100E-R | Silver | | | | | | | | | | | | | |
| S100CN | Silver | | | | | | | | | | | | | |
| S100WHCN | White | | | | | | | | | | | | | |
| S100WHE-R | White | | | | | | | | | | | | | |
| S100BRCN | Bronze | | | | | | | | | | | | | |
| IH3-1-LL50 | Silver | | | | | | | | | | | | | |
| IH3-2-LM | Silver | | | | | | | | | | | | | |
| S105E-R | Silver | | | | | | | | | | | | | |
| S105CN | Silver | | | | | | | | | | | | | |
| IH4-1-LM | Silver | ½ | 4 | 4.54 | 2.78 | 2.14 | 3.94 | 3.39 | 1.44 | 0.83 | 3.28 | 3.25 | 1.87 | 17.0 |
| S101E-R | Silver | | | | | | | | | | | | | |
| IH4-2-LM | Silver | ¾ | 4 | 4.54 | 2.78 | 2.14 | 3.94 | 3.39 | 1.44 | 0.83 | 3.28 | 3.25 | 1.87 | 18.3 |
| IH5-1-LM | Silver | | | | | | | | | | | | | |
| S102CN | Silver | ½ | 5 | 4.54 | 2.78 | 2.14 | 3.94 | 3.39 | — | — | — | — | — | — |
| IH5-2-LM | Silver | | | | | | | | | | | | | |
| S107CN | Silver | ¾ | 5 | 4.54 | 2.78 | 2.14 | 3.94 | 3.39 | 1.44 | 0.83 | 3.28 | 3.25 | 1.87 | 17.0 |
| IHD3-1 | Silver | | | | | | | | | | | | | |
| IHD3-2 | Silver | | | | | | | | | | | | | |
| IHD3-3 | Silver | 1 | 3 | 4.54 | 2.78 | 2.80 | 3.94 | 3.39 | — | 1.02 | 3.28 | 3.25 | 1.87 | 23.0 |
| IHD4-1* | Silver | ½ | 4 | 4.54 | 2.78 | 2.80 | 3.94 | 3.39 | 1.44 | 1.02 | 3.28 | 3.25 | 1.87 | 23.8 |
| IHD4-2* | Silver | | | | | | | | | | | | | |

Note: Product must be installed in accordance with applicable national and local electrical codes.

*cULus



tnb.abb.com (US/Latin America)
tnb.ca.abb.com (Canada)
abb.com

We reserve the right to make technical changes or modify the contents of this document without prior notice. With regard to purchase orders, the agreed particulars shall prevail. ABB does not accept any responsibility whatsoever for potential errors or possible lack of information in this document.

We reserve all rights in this document and in the subject matter and illustrations contained therein. Any reproduction – in whole or in part – is forbidden without prior written consent of ABB.
Copyright© 2020 ABB. All rights reserved.