



# ELLIOTT ELECTRIC SUPPLY

We Deliver...Lower Cost, Quality Products, & Personal Service

3804 South Street  
75964-7263, TX Nacogdoches  
Phone: 936-569-7941  
Fax: 936-560-4685



## IPC5041 500 Insul. Piercing Tap

*Thomas&Betts-Abb Ins Prod*

|                  |                              |
|------------------|------------------------------|
| Catalog Number   | IPC5041                      |
| Manufacturer     | Thomas&Betts-Abb Ins Prod    |
| Description      |                              |
| Weight per unit  | 0.8000 (lbs/each)            |
| Product Category | Large Terminals & Connectors |

### Features

|                          |      |
|--------------------------|------|
| Number of Mounting Holes | 1 PH |
|--------------------------|------|

### Descriptions

|                  |  |
|------------------|--|
| Description      | 500 INSUL. PIERCING TAP  |
| Product Type     | Conn Perce Isolant Talon   |
| Special Features | For copper-to-copper, copper-to-aluminum and aluminum-to-aluminum applications (insulated conductor only). Performs as splice or tab for non-tension applications up to 600 volts, depending on size of connector. |

### Manufacturer Information

|                           |                |
|---------------------------|----------------|
| Brand                     | Blackburn      |
| GTIN                      | 00783786331130 |
| Manufacturers Part Number | IPC5041        |
| UPC                       | 783786331130   |

### Taxonomies, Classifications, and Categories

|                      |                                |
|----------------------|--------------------------------|
| Category Description | STA-KON TYPE TERMINALS         |
| Type                 | Insulated Conductor Connectors |

### Packaging

|                 |     |
|-----------------|-----|
| Carton          | 8   |
| Package         | 80  |
| Weight Per each | 0.8 |

### Uses, Certifications, and Standards

|                    |          |
|--------------------|----------|
| standard           | UL E9809 |
| Temperature Rating | 90 ft    |

## Insulation Piercing Connectors

No need to strip conductor insulation or use tape after installation.

### Type IPC — Talon Insulation Piercing Connectors

- For copper-to-copper, copper-to-aluminum and aluminum-to-aluminum applications (insulated conductor only)
- Performs as splice or tap for non-tension applications up to 600 volts, depending on size of connector
- Self insulated for hot line applications
- Six sizes cover range from #10–500 kcmil
- UL® 486B Listed AL9CU (90° C rated)

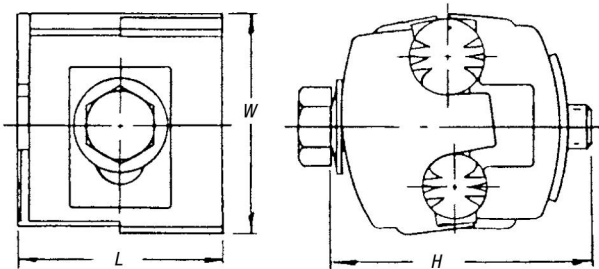


Fig. 1

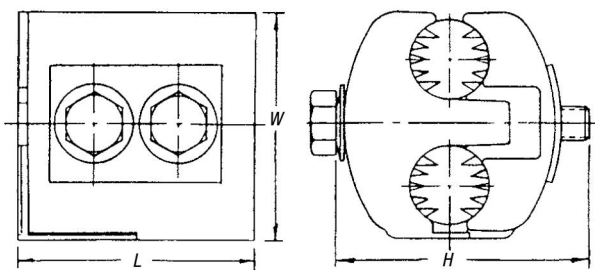


Fig. 2



| CAT. NO. | AL OR CU<br>CONDUCTOR RANGE<br>AWG/MM <sup>2</sup> |         | NO.<br>BOLTS | FIG. | DIMENSIONS (IN.)               |                               |                                |
|----------|--|---------|--------------|------|--------------------------------|-------------------------------|--------------------------------|
|          | MAIN   | TAP     |              |      | W                              | H                             | L                              |
| IPC1102* | 1/0–8  | 2–8     | 1            | 1    | 2 <sup>3</sup> / <sub>16</sub> | 2                             | 1 <sup>1</sup> / <sub>32</sub> |
|          | 50–6   | 35–6    |              |      |                                |                               |                                |
| IPC4111  | 4/0–1/0  | 1/0–6   | 2            | 2    | 2 <sup>1</sup> / <sub>2</sub>  | 3                             | 1 <sup>1</sup> / <sub>32</sub> |
|          | 95–50  | 50–16   |              |      |                                |                               |                                |
| IPC4141  | 4/0–1/0  | 4/0–1/0 | 2            | 2    | 2 <sup>5</sup> / <sub>16</sub> | 3 <sup>3</sup> / <sub>4</sub> | 1 <sup>2</sup> / <sub>32</sub> |
|          | 95–50  | 95–50   |              |      |                                |                               |                                |
| IPC5041* | 500–350  | 4/0–4   | 1            | 1    | 2                              | 2 <sup>1</sup> / <sub>2</sub> | 2 <sup>1</sup> / <sub>8</sub>  |
|          | 240–185  | 90–25   |              |      |                                |                               |                                |
| IPC3535  | 350–4/0  | 350–4/0 | 2            | 2    | 2 <sup>1</sup> / <sub>16</sub> | 2 <sup>1</sup> / <sub>2</sub> | 2 <sup>1</sup> / <sub>8</sub>  |
|          | 185–95   | 185–95  |              |      |                                |                               |                                |
| IPC3541  | 350–4/0  | 4/0–10  | 1            | 1    | 2 <sup>3</sup> / <sub>4</sub>  | 3                             | 2 <sup>5</sup> / <sub>16</sub> |
|          | 185–95   | 95–6    |              |      |                                |                               |                                |

\* 600V Rating (all others 300V).