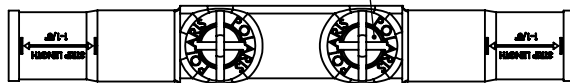


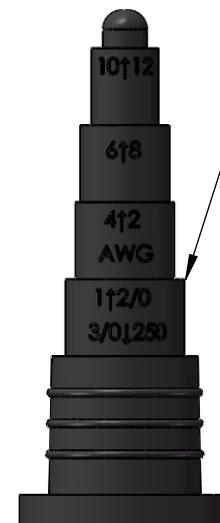
NOTES:

1. CONNECTORS ARE MANUFACTURED FROM 6061-T6511 ALUMINUM ALLOY.
2. CONNECTOR BODY, ROCKET AND SCREW CAP ARE MANUFACTURED FROM UV RATED SANTOPRENE RUBBER.
3. CONNECTOR MEETS OR EXCEEDS ANSI C119.1 SPECIFICATIONS

REMOVAL BE CAPS FOR
ACCESS TO 5/16 INTERNAL HEX
PRESSURE SCREWS



CUT CAP FOR APPROPRIATE
WIRE SIZE AS INDICATED ON CAP

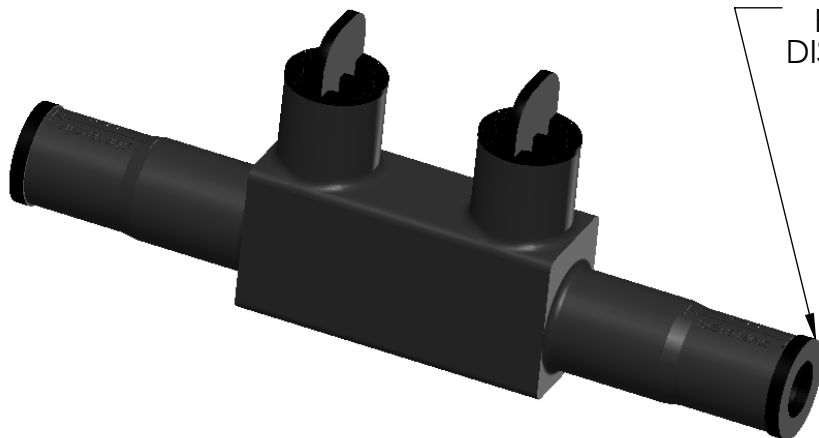
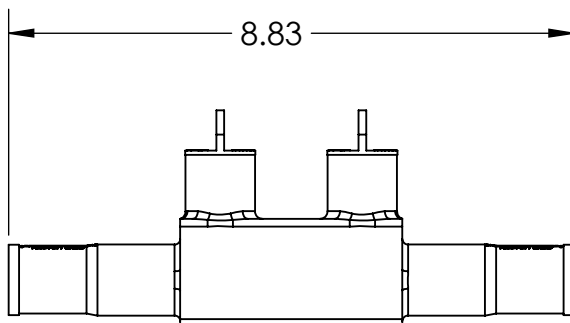
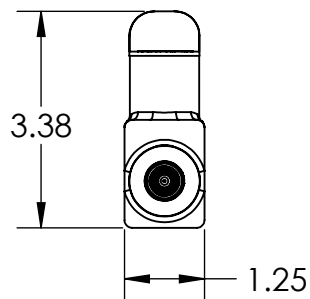



CUT ROCKET

ROCKET DETAIL

WIRE

350 - #12 AWG
CONDUCTOR PORTS
ROCKET USED FOR 250-#12
DISCARD ROCKET FOR 350-300

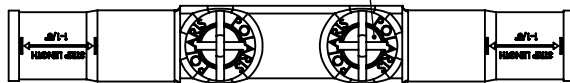


 POLARIS SALES . CO . INC		11625 PROSPEROUS DRIVE ODESSA, FL 33556	
PROPRIETARY AND CONFIDENTIAL THE INFORMATION CONTAINED IN THIS DRAWING IS THE SOLE PROPERTY OF POLARIS SALES CO. INC. ANY REPRODUCTION IN PART OR AS A WHOLE WITHOUT THE WRITTEN PERMISSION OF POLARIS SALES CO. INC. IS PROHIBITED.		TITLE: SUBMERSIBLE SPLICE CONNECTOR	
NAME L. HILL		DATE 4/3/2014	
DWG. NO. SSWB350P		REV A	
MATERIAL: SEE NOTES		SCALE: N/A	
SHEET: 1 OF 1			

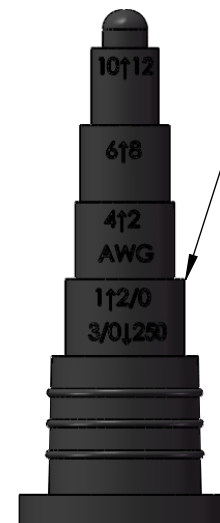
NOTES:

1. CONNECTORS ARE MANUFACTURED FROM 6061-T6511 ALUMINUM ALLOY.
2. CONNECTOR BODY, ROCKET AND SCREW CAP ARE MANUFACTURED FROM UV RATED SANTOPRENE RUBBER.
3. CONNECTOR MEETS OR EXCEEDS ANSI C119.1 SPECIFICATIONS

REMOVAL BE CAPS FOR
ACCESS TO 5/16 INTERNAL HEX
PRESSURE SCREWS



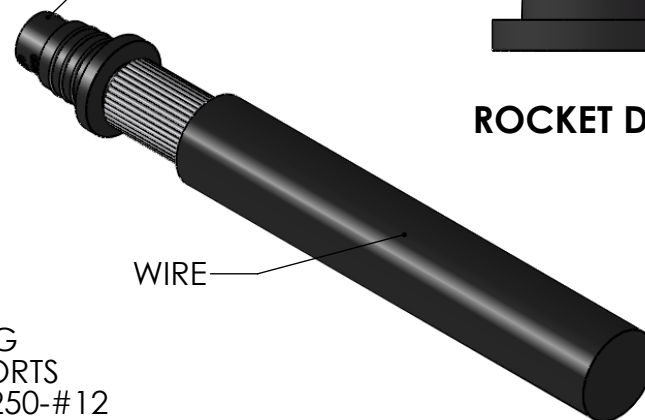
CUT CAP FOR APPROPRIATE
WIRE SIZE AS INDICATED ON CAP



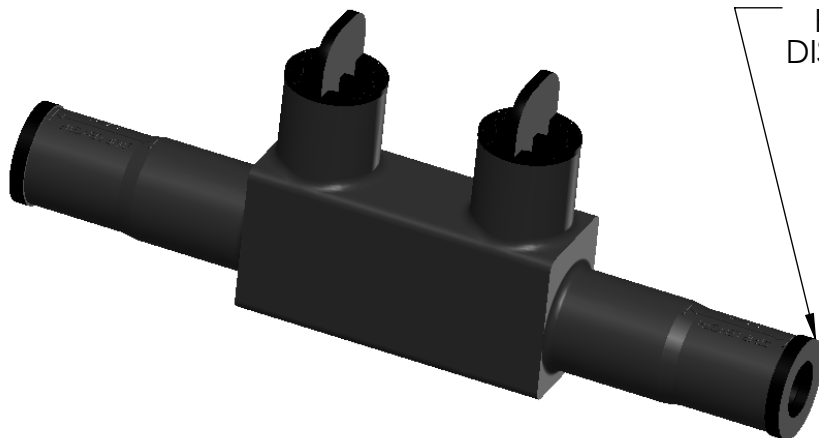
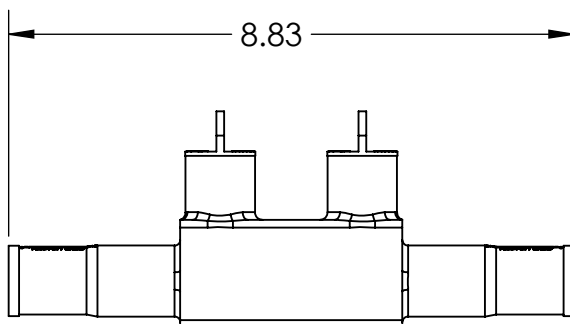
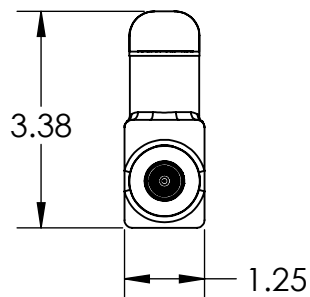
ROCKET DETAIL


CUT ROCKET

WIRE



350 - #12 AWG
CONDUCTOR PORTS
ROCKET USED FOR 250-#12
DISCARD ROCKET FOR 350-300



 POLARIS SALES . CO . INC		11625 PROSPEROUS DRIVE ODESSA, FL 33556	
PROPRIETARY AND CONFIDENTIAL THE INFORMATION CONTAINED IN THIS DRAWING IS THE SOLE PROPERTY OF POLARIS SALES CO. INC. ANY REPRODUCTION IN PART OR AS A WHOLE WITHOUT THE WRITTEN PERMISSION OF POLARIS SALES CO. INC. IS PROHIBITED.		TITLE: SUBMERSIBLE SPLICE CONNECTOR	
NAME L. HILL		DATE 4/3/2014	
DWG. NO. SSWB350P		REV A	
MATERIAL: SEE NOTES		SCALE: N/A	
SHEET: 1 OF 1			