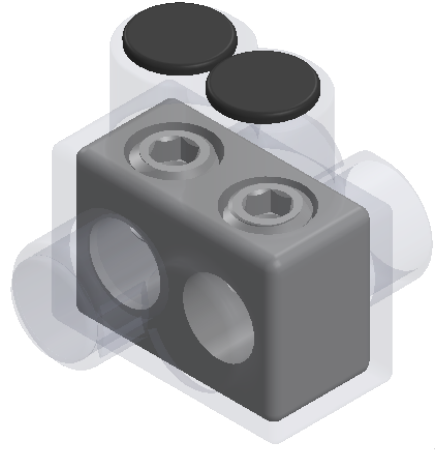


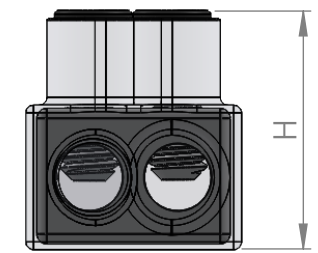
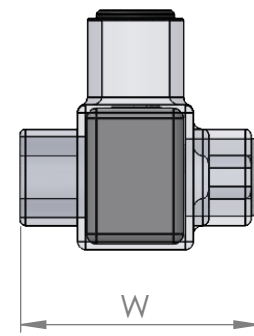
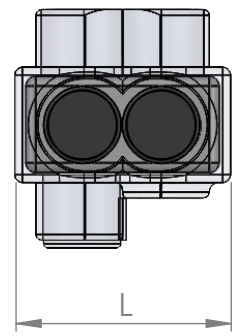
2

1

REVISIONS				
ZONE	REV.	DESCRIPTION	DATE	APPROVED



SCALE: 1.5:1



CAT. NO.	NO. OF PORTS	WIRE RANGE	MAX TORQUE VALUE (IN./LBS.)	HEX WRENCH SIZE (IN.)		LENGTH (L) (IN.)	WIDTH (W) (IN.)	HEIGHT (H) (IN.)	STD. CTN. QTY.
ITO-4C	2	4-14 AWG	45	Slotted	●	1.120	1.250	1.380	12
ITO-1/0C	2	1/0-14 AWG	180	(3/16)	●	1.620	1.750	1.750	6
ITO-3/0C	2	3/0-6 AWG	250	(1/4)	●	1.840	1.870	1.870	6

<b>PROPRIETARY AND CONFIDENTIAL</b>  THE INFORMATION CONTAINED IN THIS DRAWING IS THE SOLE PROPERTY OF NSI Industries LLC. ANY REPRODUCTION IN PART OR AS A WHOLE WITHOUT THE WRITTEN PERMISSION OF NSI Industries LLC IS PROHIBITED.	DRAWN	DR	11/18
	CHECKED	GW	1/14
	ENG APPR.		
	MFG APPR.		
	Q.A.		
INTERPRET GEOMETRIC TOLERANCING PER:	COMMENTS: TO ORDER NSI PRODUCTS CALL UNITED STATES (704) 439-2420 FOR PRODUCT INFO: www.nsiindustries.com		
MATERIAL			
FINISH	Clear		
DIMENSIONS ARE IN INCHES			



TITLE: Pre-Insulated Connector ITO Series: ITO-1/0C			
SIZE	DWG. NO.	REV	
<b>A</b>	ITO (Clear) Family Drawing	<b>A</b>	
SCALE: 1:2	SW 2019	SHEET 1 OF 1	



2

1