

# POLARIS GREY™

## Pre-Insulated, Multi-Port Connectors

### For Fine Stranded Wire

ITG, ITOG, IPLG, SITG Series



#### SPECIFICATIONS

- UL Listed 486A Wire Connector (Dry location).
- **Temperature Rating/Voltage:** CU9.  
Cold temperature rated to -45 °C, rated 600V, 90 °C.
- **Wire Type:** Can be used with Class B, C, D, K, M, I of copper conductor, but is specifically designed for use with fine-stranded, flexible and extra-flexible copper conductors. This includes DLO cable and motor lead wire – excellent for use in motor connect/disconnect applications.
- **Torque Chart:** See page 34.
- **Installation Instructions:** See page 35 for extra illustrations and detailed information for assembly, mounting and installation.

#### FEATURES

- **Safe:** Insulated with high dielectric strength plastisol for tough mechanical protection.
- Factory applied insulation provides consistent quality and protection.
- Abrasion and chemical resistant.
- **Fast:** Eliminates the need for cover and taping – supplied with removable access plugs over the hex screws to protect against contamination.
- **Easy:** Three sizes cover 14 to 3/0 AWG.
- **Reusable:** Ideal for cabletrays, troughs, wire-ways, raceways, ducts and motor junction boxes for fine stranded conductor applications .
- For copper wire only.
- For display bags with a mounting hole for hanging, add the suffix "-B" to the part number when ordering.

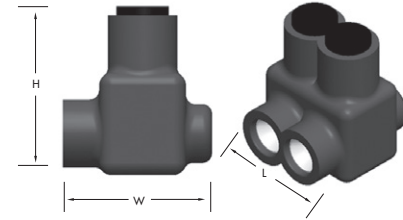


Figure varies by number of wire ports.



CAT. NO.	NO. OF PORTS	WIRE RANGE (BY CLASSIFICATION)		LENGTH (L) (IN.)	WIDTH (W) (IN.)	HEIGHT (H) (IN.)	MAX. TORQUE VALUE (IN./LBS.)	HEX/WRENCH SIZE (IN.)	STD. CTN. QTY.
		CLASS B, C, D	CLASS K, M, I						
ITG-6	2	6-14 AWG	6-14 AWG	1.130	1.240	1.370	45	1/8	12
ITOG-6	2	6-14 AWG	6-14 AWG	1.130	1.270	1.370	45	1/8	12
IPLG6-3	3	6-14 AWG	6-14 AWG	1.550	1.240	1.370	45	1/8	12
IPLG6-4	4	6-14 AWG	6-14 AWG	1.980	1.240	1.370	45	1/8	6
IPLG6-6	6	6-14 AWG	6-14 AWG	2.820	1.240	1.370	45	1/8	6
ITG-1	2	1-10 AWG	2-10 AWG	1.600	1.550	1.750	150	3/16	6
ITOG-1	2	1-10 AWG	2-10 AWG	1.600	1.630	1.750	150	3/16	6
IPLG1-3	3	1-10 AWG	2-10 AWG	1.550	1.240	1.370	150	3/16	6
IPLG1-4	4	1-10 AWG	2-10 AWG	1.980	1.240	1.370	150	3/16	6
IPLG1-6	6	1-10 AWG	2-10 AWG	2.820	1.240	1.370	150	3/16	6
ITG-3/0	2	3/0-4 AWG	2/0-2 AWG	1.850	1.600	1.810	250	3/16	6
ITOG-3/0	2	3/0-4 AWG	2/0-2 AWG	1.850	1.630	1.810	250	3/16	6
IPLG3/0-3	3	3/0-4 AWG	2/0-2 AWG	2.250	1.600	1.750	250	3/16	6
IPLG3/0-4	4	3/0-4 AWG	2/0-2 AWG	2.900	1.600	1.750	250	3/16	6
IPLG3/0-6	6	3/0-4 AWG	2/0-2 AWG	4.200	1.600	1.750	250	3/16	4

REPLACEMENT SLEEVES	
CAT. NO.	STD. PKG. QTY.
SITG-6	10
SITG-1	10
SITG-3/0	10

# POLARIS GREY™

## Pre-Insulated, Multi-Port Connectors

### For Fine Stranded Wire

ITG, ITOG, IPLG, SITG Series



#### SPECIFICATIONS

- UL Listed 486A Wire Connector (Dry location).
- **Temperature Rating/Voltage:** CU9.  
Cold temperature rated to -45 °C, rated 600V, 90 °C.
- **Wire Type:** Can be used with Class B, C, D, K, M, I of copper conductor, but is specifically designed for use with fine-stranded, flexible and extra-flexible copper conductors. This includes DLO cable and motor lead wire – excellent for use in motor connect/disconnect applications.
- **Torque Chart:** See page 34.
- **Installation Instructions:** See page 35 for extra illustrations and detailed information for assembly, mounting and installation.

#### FEATURES

- **Safe:** Insulated with high dielectric strength plastisol for tough mechanical protection.
- Factory applied insulation provides consistent quality and protection.
- Abrasion and chemical resistant.
- **Fast:** Eliminates the need for cover and taping – supplied with removable access plugs over the hex screws to protect against contamination.
- **Easy:** Three sizes cover 14 to 3/0 AWG.
- **Reusable:** Ideal for cabletrays, troughs, wire-ways, raceways, ducts and motor junction boxes for fine stranded conductor applications .
- For copper wire only.
- For display bags with a mounting hole for hanging, add the suffix "-B" to the part number when ordering.

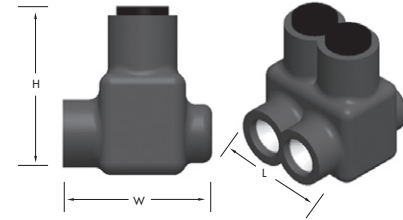


Figure varies by number of wire ports.



CAT. NO.	NO. OF PORTS	WIRE RANGE (BY CLASSIFICATION)		LENGTH (L) (IN.)	WIDTH (W) (IN.)	HEIGHT (H) (IN.)	MAX. TORQUE VALUE (IN./LBS.)	HEX/WRENCH SIZE (IN.)	STD. CTN. QTY.
		CLASS B, C, D	CLASS K, M, I						
ITG-6	2	6-14 AWG	6-14 AWG	1.130	1.240	1.370	45	1/8	12
ITOG-6	2	6-14 AWG	6-14 AWG	1.130	1.270	1.370	45	1/8	12
IPLG6-3	3	6-14 AWG	6-14 AWG	1.550	1.240	1.370	45	1/8	12
IPLG6-4	4	6-14 AWG	6-14 AWG	1.980	1.240	1.370	45	1/8	6
IPLG6-6	6	6-14 AWG	6-14 AWG	2.820	1.240	1.370	45	1/8	6
ITG-1	2	1-10 AWG	2-10 AWG	1.600	1.550	1.750	150	3/16	6
ITOG-1	2	1-10 AWG	2-10 AWG	1.600	1.630	1.750	150	3/16	6
IPLG1-3	3	1-10 AWG	2-10 AWG	1.550	1.240	1.370	150	3/16	6
IPLG1-4	4	1-10 AWG	2-10 AWG	1.980	1.240	1.370	150	3/16	6
IPLG1-6	6	1-10 AWG	2-10 AWG	2.820	1.240	1.370	150	3/16	6
ITG-3/0	2	3/0-4 AWG	2/0-2 AWG	1.850	1.600	1.810	250	3/16	6
ITOG-3/0	2	3/0-4 AWG	2/0-2 AWG	1.850	1.630	1.810	250	3/16	6
IPLG3/0-3	3	3/0-4 AWG	2/0-2 AWG	2.250	1.600	1.750	250	3/16	6
IPLG3/0-4	4	3/0-4 AWG	2/0-2 AWG	2.900	1.600	1.750	250	3/16	6
IPLG3/0-6	6	3/0-4 AWG	2/0-2 AWG	4.200	1.600	1.750	250	3/16	4

REPLACEMENT SLEEVES	
CAT. NO.	STD. PKG. QTY.
SITG-6	10
SITG-1	10
SITG-3/0	10