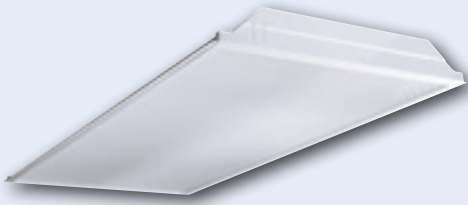


# JT8

## Dedicated T8 Lensed Troffer

LENSED TROFFERS



### FEATURES

- Optimized for T8 lamps
- Recessed, surface, or cable mount
- Flush steel door (standard) hinges from either side for maximum flexibility
- Mitered corners standard
- Hemmed edges on 2' x 4' for contractor-friendly handling
- Mechanical light trap prevents light leak without foam gasketing
- Integral T-Bar clips (2' x 4' only)
- Housing reinforced with embossments
- Painted parts are treated with a five stage phosphate bonding process and finished with a backed white enamel
- UL listed 1598, cUL or CSA. Damp Location standard
- Available with exclusive wiHUBB technology preinstalled

### ORDERING INFORMATION

<b>JT8</b>										
MODEL	NO. OF LAMPS	CEILING TYPE	SHIELDING	VOLTAGE	OPTIONS					
<b>JT8</b> Dedicated T8 Lensed Troffer	2 Two 3 Three 4 Four (2 x 4 only) See Product Availability table below.	<b>G</b> Inverted T-Bar <sup>1</sup> <b>SM</b> Surface Mount <b>CM</b> Cable Mount <sup>2</sup>	<b>A12</b> Pattern 12 Acrylic Lens (Std.) <b>A12125</b> Pattern 12 Acrylic Lens, 0.125" Nominal <b>A19</b> Pattern 19 Acrylic Lens, 0.156" Nominal <b>PC1</b> ½" x ½" x ½" Specular Silver Polystyrene Louver For more shielding options see page 40.	<b>U</b> 120V-277V <b>347</b> 347V	<b>F835</b> 35K 78+CRI T8 Lamps Installed <b>F841</b> 41K 78+CRI T8 Lamps Installed <b>F0835</b> 35K 82CRI T8 Lamps Installed <b>F0841</b> 41K 82 CRI T8 Lamps Installed <b>EL</b> Emergency Battery Pack Installed <sup>3</sup> <b>GLR</b> Fast Blow Fuse <b>MS9</b> Master/Satellite w/9' Harness <b>C388</b> 3-Wire Flex <b>C488</b> 4-Wire Flex <b>PAF</b> Paint After Fabrication <b>M4R</b> Specular Reflector <b>WIH</b> wiHUBB Enabled <sup>4,5</sup> <b>EOR</b> End of Row (SM/CM only) <sup>6,7</sup> <b>INT</b> Intermediate (SM/CM only) <sup>6,7</sup> <b>CP</b> Chicago Plenum For more options see Technical section.					
SIZE	LAMP TYPE	DOOR	BALLAST							
<b>22</b> 2' x 2'	<b>17</b> 2', T8: 17 Watt (2, 3, or 4 lamps) <b>31U1</b> U-Bent, 1½" Leg Spacing T8: 31 Watt (2 or 3 lamps) <b>32</b> 4', T8: 32, 30, 28 or 25 Watt <b>32U6</b> U-Bent, 6" Leg Spacing T8: 32 Watt (2 lamps) <b>40TT</b> Twin Tube Compact, 2G11 Base: 40 Watt (2 or 3 lamps)	<b>FS</b> White Flush Steel <b>FA</b> White Flush Aluminum For more door options contact factory.	<b>NOTE:</b> See Technical Section for other ballast options. <b>E</b> Electronic T8, Instant Start <b>3E</b> 3-Lamp Electronic T8, Instant Start <b>4E</b> 4-Lamp Electronic T8, Instant Start (17W lamps only) <b>24E</b> (1) 2-Lamp & (1) 4-Lamp Electronic T8, Instant Start (For use with MS9) <b>EP</b> Electronic T8, Programmed Start <b>3EP</b> 3-Lamp Electronic T8, Programmed Start <b>4EP</b> 4-Lamp Electronic T8, Programmed Start <b>ELW</b> 2-Lamp Electronic T8, 0.77 Ballast Factor, Low Wattage, Instant Start <b>3ELW</b> 3-Lamp Electronic T8, 0.77 Ballast Factor, Low Wattage, Instant Start <b>4ELW</b> 4-Lamp Electronic T8, 0.77 Ballast Factor, Low Wattage, Instant Start <b>EPTT</b> Electronic Twin Tube, Programmed Start							
ACCESSORIES (ORDER SEPARATELY)										
<b>FK22</b> 2'x2' Single Flange Kit										
<b>FK24</b> 2'x4' Single Flange Kit										
<b>FKCR</b> Flange Kit Row Adaptor (All Sizes)										
<b>CM48Y2SC3F-KIT</b> 48" Cable Mount Kit for 2' wide CM ceiling type, 3 Wire Feed Cord										

<sup>1</sup> For drywall, order flange kit accessories separately.

<sup>2</sup> Order hanger accessories separately.

<sup>3</sup> 3-lamp 2x2 fixture utilizes 2 ballast compartments and can mount any standard battery pack. 2 and 4-lamp fixtures can only mount one ballast and one 9" long or shorter battery pack. All other battery packs must be externally mounted.

<sup>4</sup> In-Fixture Module Antenna adds 2" to overall fixture height at power feed location.

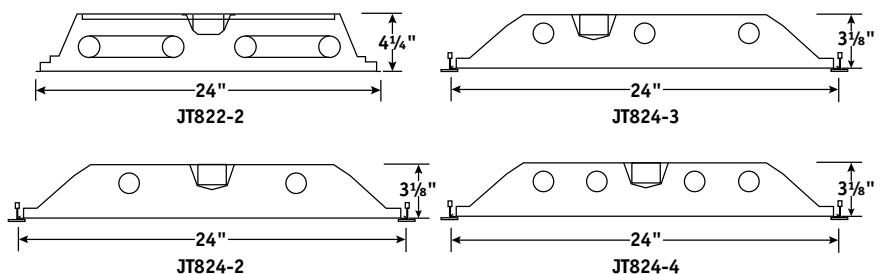
<sup>5</sup> Not available with Surface Mount ceiling types.

<sup>6</sup> Provides ends with wiring access for continuous row mounting.

<sup>7</sup> Contact Hubbell representative for continuous row, 3-lamp fixtures.

### PRODUCT AVAILABILITY

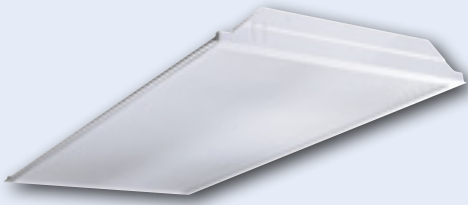
SIZE	NO. OF LAMPS	LAMP TYPE	GRID TRIM HEIGHT	SM TRIM HEIGHT
2' x 2'	2	17, 31U1, 32U6, 40TT	4¼"	4⅝"
	3	17, 31U1, 40TT	4¼"	4⅝"
	4	17	4¼"	4⅝"
2' x 4'	2	32	3⅝"	3¾"
	3	32	3⅝"	3¾"
	4	32	3⅝"	3¾"



# JT8

## Dedicated T8 Lensed Troffer

LENSED TROFFERS



### FEATURES

- Optimized for T8 lamps
- Recessed, surface, or cable mount
- Flush steel door (standard) hinges from either side for maximum flexibility
- Mitered corners standard
- Hemmed edges on 2' x 4' for contractor-friendly handling
- Mechanical light trap prevents light leak without foam gasketing
- Integral T-Bar clips (2' x 4' only)
- Housing reinforced with embossments
- Painted parts are treated with a five stage phosphate bonding process and finished with a backed white enamel
- UL listed 1598, cUL or CSA. Damp Location standard
- Available with exclusive wiHUBB technology preinstalled

### ORDERING INFORMATION

<b>JT8</b>							
MODEL	NO. OF LAMPS	CEILING TYPE	SHIELDING	VOLTAGE	OPTIONS		
<b>JT8</b> Dedicated T8 Lensed Troffer	<b>2</b> Two <b>3</b> Three <b>4</b> Four (2 x 4 only) See Product Availability table below.	<b>G</b> Inverted T-Bar <sup>1</sup> <b>SM</b> Surface Mount <b>CM</b> Cable Mount <sup>2</sup>	<b>A12</b> Pattern 12 Acrylic Lens (Std.) <b>A12125</b> Pattern 12 Acrylic Lens, 0.125" Nominal <b>A19</b> Pattern 19 Acrylic Lens, 0.156" Nominal <b>PC1</b> ½" x ½" x ½" Specular Silver Polystyrene Louver For more shielding options see page 40.	<b>U</b> 120V-277V <b>347</b> 347V	<b>F835</b> 35K 78+CRI T8 Lamps Installed	<b>F841</b> 41K 78+CRI T8 Lamps Installed	<b>F0835</b> 35K 82CRI T8 Lamps Installed
SIZE	LAMP TYPE	DOOR	BALLAST				
<b>22</b> 2' x 2'	<b>17</b> 2', T8: 17 Watt (2, 3, or 4 lamps)	<b>FS</b> White Flush Steel <b>FA</b> White Flush Aluminum For more door options contact factory.	<b>NOTE:</b> See Technical Section for other ballast options. <b>E</b> Electronic T8, Instant Start <b>3E</b> 3-Lamp Electronic T8, Instant Start <b>4E</b> 4-Lamp Electronic T8, Instant Start (17W lamps only) <b>24E</b> (1) 2-Lamp & (1) 4-Lamp Electronic T8, Instant Start (For use with MS9) <b>EP</b> Electronic T8, Programmed Start <b>3EP</b> 3-Lamp Electronic T8, Programmed Start <b>4EP</b> 4-Lamp Electronic T8, Programmed Start <b>ELW</b> 2-Lamp Electronic T8, 0.77 Ballast Factor, Low Wattage, Instant Start <b>3ELW</b> 3-Lamp Electronic T8, 0.77 Ballast Factor, Low Wattage, Instant Start <b>4ELW</b> 4-Lamp Electronic T8, 0.77 Ballast Factor, Low Wattage, Instant Start <b>EPTT</b> Electronic Twin Tube, Programmed Start	<b>EL</b> Emergency Battery Pack Installed <sup>3</sup>	<b>GLR</b> Fast Blow Fuse	<b>MS9</b> Master/Satellite w/9' Harness	<b>C388</b> 3-Wire Flex
<b>24</b> 2' x 4'	<b>31U1</b> U-Bent, 1½" Leg Spacing T8: 31 Watt (2 or 3 lamps) <b>32</b> 4', T8: 32, 30, 28 or 25 Watt <b>32U6</b> U-Bent, 6" Leg Spacing T8: 32 Watt (2 lamps) <b>40TT</b> Twin Tube Compact, 2G11 Base: 40 Watt (2 or 3 lamps)			<b>MS9</b> Master/Satellite w/9' Harness	<b>C488</b> 4-Wire Flex	<b>PAF</b> Paint After Fabrication	<b>M4R</b> Specular Reflector
<b>ACCESSORIES (ORDER SEPARATELY)</b>							
<b>FK22</b> 2'x2' Single Flange Kit							
<b>FK24</b> 2'x4' Single Flange Kit							
<b>FKCR</b> Flange Kit Row Adaptor (All Sizes)							
<b>CM48Y2SC3F-KIT</b> 48" Cable Mount Kit for 2' wide CM ceiling type, 3 Wire Feed Cord							
<b>WIH</b> wiHUBB Enabled <sup>4,5</sup>							
<b>EOR</b> End of Row (SM/CM only) <sup>6,7</sup>							
<b>INT</b> Intermediate (SM/CM only) <sup>6,7</sup>							
<b>CP</b> Chicago Plenum							
For more options see Technical section.							

<sup>1</sup> For drywall, order flange kit accessories separately.

<sup>2</sup> Order hanger accessories separately.

<sup>3</sup> 3-lamp 2x2 fixture utilizes 2 ballast compartments and can mount any standard battery pack. 2 and 4-lamp fixtures can only mount one ballast and one 9" long or shorter battery pack. All other battery packs must be externally mounted.

<sup>4</sup> In-Fixture Module Antenna adds 2" to overall fixture height at power feed location.

<sup>5</sup> Not available with Surface Mount ceiling types.

<sup>6</sup> Provides ends with wiring access for continuous row mounting.

<sup>7</sup> Contact Hubbell representative for continuous row, 3-lamp fixtures.

### PRODUCT AVAILABILITY

SIZE	NO. OF LAMPS	LAMP TYPE	GRID TRIM HEIGHT	SM TRIM HEIGHT
2' x 2'	2	17, 31U1, 32U6, 40TT	4¼"	4⅝"
	3	17, 31U1, 40TT	4¼"	4⅝"
	4	17	4¼"	4⅝"
2' x 4'	2	32	3⅝"	3¾"
	3	32	3⅝"	3¾"
	4	32	3⅝"	3¾"

