



ELLIOTT ELECTRIC SUPPLY

We Deliver...Lower Cost, Quality Products, & Personal Service

3804 South Street
75964-7263, TX Nacogdoches
Phone: 936-569-7941
Fax: 936-560-4685



LD3EI6A NM-Iv Latch Duct P/FT *Panduit Corporation*

Catalog Number	LD3EI6A
Manufacturer	Panduit Corporation
Description	
Weight per unit	0.3375 (lbs/each)
Product Category	Ducts, Raceways, Runways, Tray

Features

Material	PVC
----------	-----

Material, Color, and Finish

Color	Electric Ivory
-------	----------------

Dimensions and Weight

Height	0.46 in
Length	6.00 IN
Width	0.77 IN

Descriptions

Description	NM-IV LATCH DUCT P/FT
Product Type	Raceway, Lowv, Ei, .77X.46(In), 6FT, PK6

Manufacturer Information

Brand	PANDUIT CORPORATION
GTIN	00074983586219
Manufacturers Part Number	LD3EI6-A
sub brand	Pan-Way
UPC	074983586219

Taxonomies, Classifications, and Categories

Category Description	All Data
Type	Raceway

Packaging

Carton	6
Package	120
Weight Per each	0.3375



ELLIOTT ELECTRIC SUPPLY

We Deliver...Lower Cost, Quality Products, & Personal Service

3804 South Street
75964-7263, TX Nacogdoches
Phone: 936-569-7941
Fax: 936-560-4685

Uses, Certifications, and Standards

Application

Designed for routing any low voltage cable along smooth and clean perimeter walls, baseboards or ceilings. This raceway is a perfect solution for schools, hospitals, offices, homes or anywhere a small, secure, low profile raceway is needed.

standard

UL94V-0; FT4, meets TIA/EIA standards

Pan-Way® LD Surface Raceway System

PANDUIT®

SPECIFICATION SHEET

specifications

LD non-metallic series low voltage, one-piece hinged design, single channel surface raceway shall include adhesive backing and shall be made of impact resistant material with a smooth finish that shall not scratch, peel or corrode. The raceway shall include an assortment of bend radius and standard fittings that complement the offering to help route, protect and conceal low voltage data, voice and video cabling. LD raceway shall be available in three sizes and four standard colors that shall be optimized with the Panduit® Pan-Net® communication system.



technical information

Material:	Rigid PVC
Flammability:	UL94V-0; FT4
Capacity:	Single Channel
Voltage Rating:	50V or less
Operating and Storage Temperature:	0 to 50° C

key features and benefits

1" bend radius control fittings:	Cables in the raceway will satisfy the minimum 1" bend radius requirement, preventing the potential degradation of cable performance; meets TIA/EIA standards
One-piece hinged design:	Cables can be laid into the raceway, speeding installation and preventing damage to cables
Adhesive backing:	Full length adhesive strip allows easy tool free installation and works well for temporary mounting
Available in different sizes & lengths:	Accommodates varying cable types and capacities. Available sizes - LD3, LD5, LD10 ; Available lengths - 6', 8', 10' (2m length available in Europe only)
Non-metallic construction:	Lightweight, reducing installer fatigue and labor required to install the raceway; solid color throughout will not chip, peel, rust or corrode; easy to cut with standard saws and saw blades, eliminating the need for special cutting devices
Distinct colors:	Available in four standard colors- IW, EI, IG, WH. AW available in Europe only. Raceway is field paintable to match walls and surrounding décor
Full selection of fittings and surface mount boxes:	Wide variety of fittings and surface mount boxes available for various LD raceway applications

applications

Pan-Way® LD Surface Raceways are designed to provide easy and economical solutions for routing any low voltage cable along smooth and clean perimeter walls,

baseboards or ceilings. This raceway is a perfect solution for schools, hospitals, offices, homes or anywhere a small, secure, low profile raceway is needed.

LD Raceway

Raceway:	LD3IW**-A LD5IW**-A LD10IW**-A
-----------------	--------------------------------------

LD Raceway Fittings

Coupler:	CF*IW-E
Inside corner:	ICFC*IW-X
Outside corner:	OCFC*IW-X
Right angle:	RAFC*IW-X
End cap:	ECF*IW-X
Tee:	TFC*IW-X
Four-way cross:	CRFC5IW-X
Drop ceiling/entrance end:	DCF*IW-X
Right angle/entrance end:	RAEFXIW-X
LD5 to LD3 reducer:	RF5X3IW-E
LD10 to LD5 reducer:	RF10X5IW-X
LD10 to LD3 reducer:	RF10X3IW-X
LD5 fire box adapter:	FBA5IW-X
LD10 fire box adapter:	FBA10IW-X

LD Raceway Installation

Installation tool:	LDW*-V
---------------------------	--------

LD Raceway Surface Mount Outlet/Junction Boxes

Low Voltage:	
Single gang, one-piece :	JB1IW-A
Single gang, one-piece, deep:	JB1DIW-A
Single gang, two-piece :	JBX3510IW-A
Single gang, two-piece, fast snap:	JB1FSIW-A
In-wall box adapter:	JBA-X
Power rated:	
Single gang, two-piece:	JBP1IW
Single gang, two-piece, deep:	JBP1DIW
Single gang, two-piece, extension:	JBP1EIW
Single gang, two-piece, intermediate:	JBP1IIW
Single gang, two-piece, snap on:	JBP1FSIW
Single gang, two-piece, round:	RJBX3510IW
Double gang, two-piece:	JBP2IW
Double gang, two-piece, deep:	JBP2DIW
Double gang, two-piece, divided:	JBP2SIW
Double gang, two-piece, snap on:	JBP2FSIW

* Insert raceway size of 3, 5, or 10

** Insert raceway length of 6', 8', or 10'

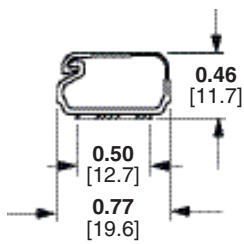
All parts listed in International White (IW) color. To order other colors substitute Electrical Ivory (EI), International Gray (IG), and White (WH).

Pan-Way® LD Surface Raceway System

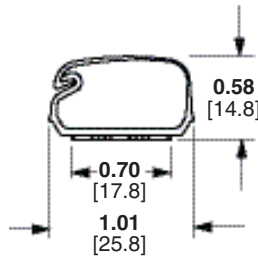
Wire Fill

Raceway Type and Configuration	Fill Area (in ²)	Electrical Cables			Data Grade Cables 24 AWG/UTP CM								Audio/Video		Fiber Optic Cable	
		14 AWG	12 AWG	10 AWG	Cat 5e – Plenum		Cat. 6		Cat. 6A		Cat. 6A (SD)		RG6		2 Strand	
		THHN/T90	THHN/T90	THHN/T90	DIA. = 0.193		DIA. = 0.24		DIA. = 0.30		DIA. = 0.24		DIA. = 0.275		DIA. = 0.175	
		FILL			FILL		FILL		FILL		FILL		FILL		FILL	
		MAX	MAX	MAX	SPEC	MAX	SPEC	MAX	SPEC	MAX	SPEC	MAX	SPEC	MAX	SPEC	MAX
		(UL Temp Rise Test)			40%	60%	40%	60%	40%	60%	40%	60%	40%	60%	40%	60%
LD3	0.21	**	**	**	2	4	1	2	1	1	1	2	1	2	3	5
LD5	0.38	**	**	**	5	7	3	5	2	3	3	5	2	3	6	9
LD10	1.00	**	**	**	13	20	8	13	5	8	8	13	6	10	16	24

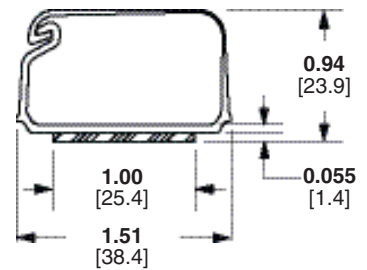
LD Raceway



LD3

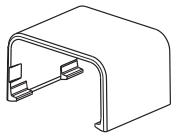


LD5

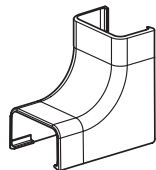


LD10

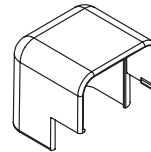
Fittings



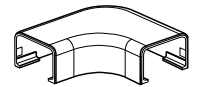
CF



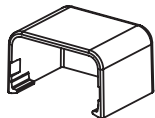
ICFC



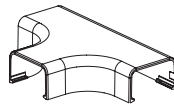
OCFC



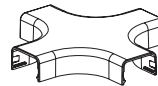
RAFC



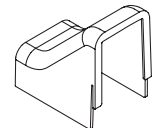
ECF



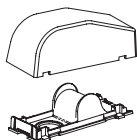
TFC



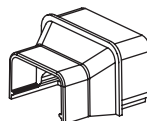
CRFC5



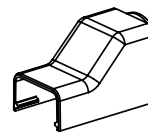
DCF



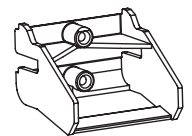
RAEFX



RF



FBA



LDW

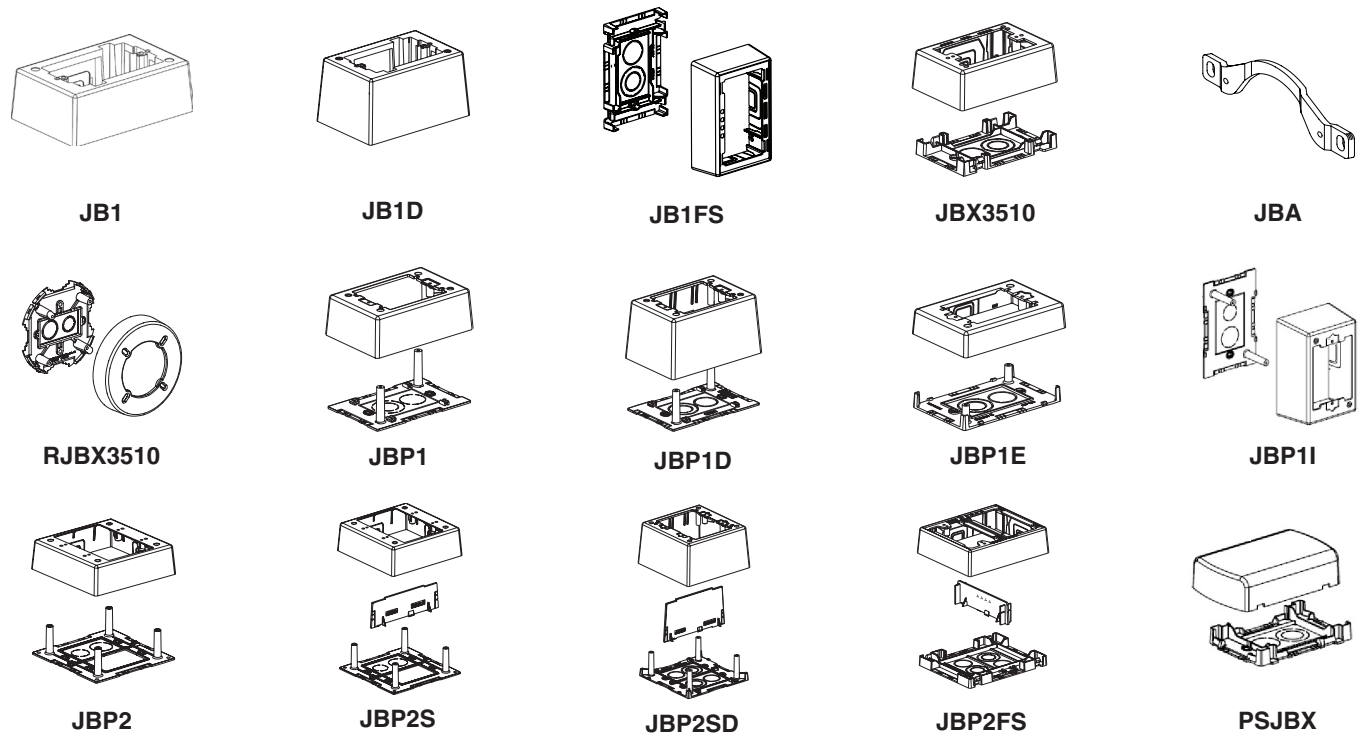
Pan-Way® LD Surface Raceway System

Compatible LD Raceway Surface Mount Outlet/Junction Boxes

Low Voltage or Fiber Optic ONLY	
JB1**-A	Single gang one-piece outlet box with adhesive backing.
JB1D**-A	Single gang one-piece deep outlet box with adhesive backing
JB1FS**-A	Fast-Snap™ Single Gang Two-Piece Snap Together Outlet Box with adhesive backing.
JBX3510**-A	Single gang two-piece snap together outlet box with adhesive backing
JBA-X	In-wall box adapters adapt single gang surface mount outlet boxes to in-wall conduit boxes.
Power, Low Voltage or Fiber Optic	
RJBX3510**	Single gang two-piece screw together round outlet box.
JBP1**	Single gang two-piece screw together outlet box.
JBP1D**	Single gang two-piece screw together deep outlet box.
JBP1E**	Single gang two-piece screw together extension outlet box.
JBP1I**	Single gang two-piece screw together intermediate outlet box.
JBP2**	Double gang two-piece screw together deep outlet box
JBP2S**	Double gang two-piece screw together divided outlet box
JBP2D**	Double gang two-piece screw together deep outlet box
JBP2FS**	Fast-Snap™ Double Gang Power Rated Two-Piece Snap Together Outlet Box
PSJBX**	Single gang two-piece snap together power source box.

** = Available colors: International White (IW), Electrical Ivory (EI), International Gray (IG), White (WH) or Arctic White (AW).

Surface Mount Outlet/Junction Boxes



WORLDWIDE SUBSIDIARIES AND SALES OFFICES

PANDUIT CANADA
Markham, Ontario
cs-cdn@panduit.com
Phone: 800.777.3300

PANDUIT EUROPE LTD.
London, UK
cs-emea@panduit.com
Phone: 44.20.8601.7200

PANDUIT SINGAPORE PTE. LTD.
Republic of Singapore
cs-ap@panduit.com
Phone: 65.6305.7575

PANDUIT JAPAN
Tokyo, Japan
cs-japan@panduit.com
Phone: 81.3.6863.6000

PANDUIT LATIN AMERICA
Guadalajara, Mexico
cs-la@panduit.com
Phone: 52.33.3777.6000

PANDUIT AUSTRALIA PTY. LTD.
Victoria, Australia
cs-aus@panduit.com
Phone: 61.3.9794.9020

For a copy of Panduit product warranties, log on to www.panduit.com/warranty

For more information

Visit us at www.panduit.com

Contact Customer Service by email: cs@panduit.com
or by phone: 800.777.3300

PANDUIT®

©2015 Panduit Corp.
ALL RIGHTS RESERVED.
SRS21--WW-ENG
Replaces WW-SRSP10
6/2015