




Type B LED Lamps

*Advanced lighting technology
to Transform any fixture*

GE current
a Daintree company

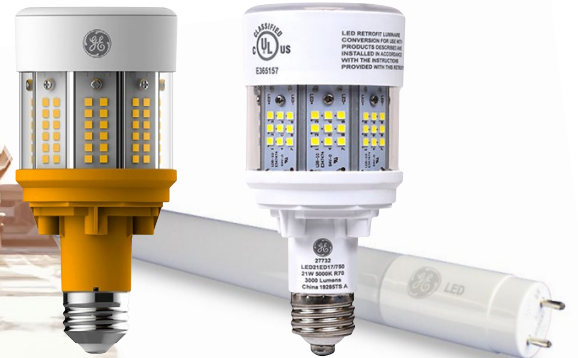
High Bay or Low.....





We have a **Type B** LED solution that elevates lighting performance

Affordably transform your existing fluorescent and HID fixtures into high-performing LED solutions. Current **Type B LED Lamps** deliver state-of-the-art technology from our full range of products including the XL T8 with an astounding 70,000 hour life and Hazardous Location HID replacements for the toughest settings, including places where flammable vapors and gases are present. No matter how high or low your ceiling, you get incredible ongoing energy and maintenance savings—plus the confidence of a warranty backed by the industry leader with an unsurpassed legacy of innovation and performance.



Our Innovative **New Products** Provide Incredibly Long life and Critical Hazard Protection



Utilize **50%** Less Energy!**

The **toughest** industrial settings and atmospheric conditions require HID replacements that are up to the **challenge**.

Current LED Hazardous Location Lamps offer industry-leading light output, efficiency, versatility and durability in tough places, including where flammable vapors and gases are present. With an ANSI profile precision-engineered to fit existing HID fixtures, they last 50,000 hours, utilize **50% less energy**** and come with an **E39 socket adapter** for easy mogul base applications. Perfect for drilling rigs, petrochemical facilities, food and beverage facilities—any heavy-industry application.

** With similar light output



The Current XL T8 Type B Double-Ended LED Tube delivers an **impressive** 70,000 hours of performance—*that's almost eight years of continuous 24-hour operation!*

Imagine how much money you'll save through reduced energy and maintenance costs, not to mention lack of disruption to your business. A built-in safety switch provides protection for the installer while an internal misapplication circuit provides protection if the lamp is placed into ballasted fixture. With **40%** longer life than standard LED tubes, and a market-leading lumen-per-watt rating that makes it **35%** more efficient, the XL T8 Type B is perfect for retail, manufacturing, distribution centers and warehouses—anywhere high performance and limited maintenance are required.

* XL benefits compared to standard Type B Double-Ended LED Tubes

35% More Energy Efficient*

40% Longer Life!*

70,000-HR Rated Life



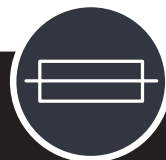
Give your old Fluorescent Fixture a **New LED Life**

Current **Type B Double-Ended LED Tubes** make it easy to keep your existing fluorescent fixture, bypass the ballast, and get advanced LED performance. Choose from 50,000-hour, 128 LPW and 70,000-hour, 174 LPW options. Both slash energy and maintenance costs with rapid paybacks and impressive ROI. Get market-leading LPW and built-in safety features in 80 SKUs covering T8 and T5 configurations of 2, 3, 4, and 8-foot lengths plus U6 design. It's a comprehensive offering that meets most any fluorescent retrofit situation including, office, retail, healthcare, manufacturing, distribution and warehouse applications.



Greater Safety is Central to the Design

- Internal Safety Switch
- Internal Misapplication Circuit
- In-line Fuse Kit

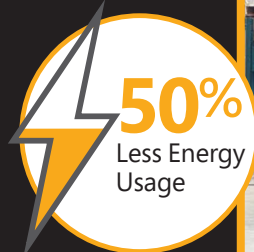
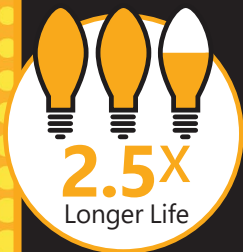


Transform Tired HID Fixtures with the Latest LED Technologies



Current HID Type B LED lamps convert existing HID fixtures into super-performing LED solutions. Carefully engineered to match the ANSI profile and fit inside fixtures just like HID, these lamps replace 50W to 1000W models with the highest lumen & efficiency performance, Industry-leading engineering expertise, and the quality & safety assurance of the industry pioneer. New Hazardous rated products expand our portfolio to include models that comply with the unique needs of the toughest industrial settings. Nobody makes it easier to maximize energy and maintenance savings with the simple twist of a lamp.

HID Type B is
a Safe Bet



Our Evergrowing LED Portfolio Includes both **Lamps and Fixtures**

As a total solutions provider, Current offers a wide array of options for meeting your lighting needs. From retrofit lamps to replacement fixtures, we provide proven technological innovations that perform reliably for years. Whether you're in the market for a quick and easy LED upgrade or your looking for the highest quality LED lighting, Current has the options that deliver solid ROI and brilliant, reliable performance.

Current **Total** LED Lighting Solutions

LED Lamps



Good

Quick & Easy LED Upgrade

Plug-N-Play Replacement

Refit Kits/ProLine

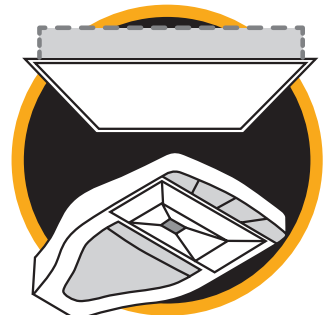


Better

Improved Performance

Easy Installation,
Minimal Disruption

Premium Fixtures



Best

Market Leading Performance

Highest Quality & Efficiency

*Minor Renovation or
DIY Efficiency Upgrade*



Moderate Renovation



*Major Renovation or
New Construction*

Complete, Innovative and Trusted



100+

Current's reputation is built on a legacy of engineering breakthroughs that go back more than 100 years. Continually finding ways to make lighting more efficient and less expensive is a cornerstone of our corporate culture. As the need for LED Type B lamps has grown, we've listened intently to our customers and created a constantly growing array of products that get the job done. Energy efficient. Low maintenance. Long lasting. Hazard compatible. We make it easy to get exactly the light you need. For more information on all our great LED Lamp Products got to https://products.gecurrent.com/sites/products.currentbyge.com/files/documents/document_file/78945-Current-Awaken-LED-Overview-Brochure.pdf

Visit www.gecurrent.com for more information on all of our offerings, or contact your sales associate.