



# ELLIOTT ELECTRIC SUPPLY

We Deliver...Lower Cost, Quality Products, & Personal Service

3804 South Street  
75964-7263, TX Nacogdoches  
Phone: 936-569-7941  
Fax: 936-560-4685



## LR65 2 Al LR SR5 CND BD

*Crouse-Hinds*

Catalog Number	LR65
Manufacturer	Crouse-Hinds
Description	Conduit Outlet Body, Epoxy Powder Painted (Body);Natural (Gasket), 2 In Trade Size, Threaded/Set Screw Connection, 69.7 Cu.In Capacity, 90 ° Angle, 2 In Hub Size, 9.88 In Length, 3.83 In Width, 3.41 In Height, 2.15 LB/Ea
Weight per unit	2.2 (lbs/each)
Product Category	Alum

### Features

connection	Threaded / Set Screw
Form	Series 5
Material	Die-Cast Copper-Free Aluminum

### Material, Color, and Finish

Color	Gray 0
-------	--------

### Descriptions

Description	2 AL LR SR5 CND BD
-------------	--------------------

### Manufacturer Information

Brand	EATON CROUSE-HINDS SERIES
GTIN	00784564140166
sub brand	Condulet
UPC	784564140166

### Taxonomies, Classifications, and Categories

Category Description	FORM 5 CONDULETS, COVERS, & GASKETS
Type	LR

### Packaging

Carton	1
Weight Per each	2.15

### Uses, Certifications, and Standards

Application	Rigid/IMC/EMT Conduit
Enclosure	Condulet
Mounting standard	Conduit UL, cUL

# Series 5

## Die Cast Aluminum Conduit Outlet Bodies, Covers & Gaskets

Series 5 die cast copper-free aluminum conduit bodies, covers and gaskets are available for use with rigid or EMT conduit (with set screw). Conduit bodies are available in trade sizes 1/2" to 4", in the most popular conduit body shapes (C, LB, LL, LR, T) and 1/2" to 2" in TB and X shapes. The Series 5 family is available as components or pre-packaged in various configurations as a SnapPack™ assembly. In addition, Series 5 is completely interchangeable with other manufacturers.

### Applications:

- Act as pull outlets for conductors being installed
- Provide openings for making splices and taps in conductors
- Act as mounting outlets for lighting fixtures and wiring devices
- Connect conduit sections
- Provide taps for branch conduit runs
- Make 90° bends in conduit runs
- Provide for access to conductors for maintenance and future system changes

### Features:

- Die cast copper-free aluminum construction is lightweight and corrosion-resistant for long, reliable service
- Epoxy powder coat finish provides additional corrosion resistance and an aesthetically-pleasing appearance
- Conduit bodies are supplied with threaded hubs for use with rigid/IMC conduit or as a combination body
- Combination bodies are supplied with tri-head set screws (slotted, Phillips, Robertson) for use with EMT or rigid/IMC conduit on trade sizes 1/2" to 2"
- Domed aluminum cover provides additional cubic capacity
- Perforated center gasket that can be easily removed, if desired
- SnapPack™ available in choice of three configurations to match customer preferences

### Certifications and Compliances:

- UL Listed
- cUL Listed
- UL File No. E-15022
- Suitable for wet locations (1/2" to 2" rigid bodies)
- Suitable for NEMA 4 (1/2" to 1" rigid bodies with integral gasket cover)

### Standard Materials and Finishes:

- Bodies – copper-free aluminum with epoxy powder paint
- Covers – aluminum with stainless steel screws, natural
- Gaskets – neoprene, natural



Series 5

**Integral gasket covers.** The sheet aluminum covers feature a raised dome with stainless steel screws supplied with nylon washers and a gasket for simplifying installation—reducing inventory and labor costs. These innovative covers are UL and cUL Listed and are NEMA 4 rated 1/2" to 1" trade sizes with rigid bodies.



**SnapPack™.** Designed for ordering and receiving convenience, the SnapPack combines a body, gasket and sheet aluminum cover in a single assembly.

**1** Rigid body with traditional cover and gasket (e.g. LB15 CGN)



**2** Combination body with traditional cover and gasket (e.g. LB15 MTC)

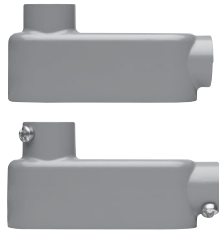


**3** **NEMA 4** rigid body with integral gasketed cover (e.g. X15 ICG)



# Series 5

## Die Cast Aluminum Conduit Outlet Bodies, Covers & Gaskets



Series 5

### TYPE LB

Size	Outlet Body		SnapPack			Internal Vol. in Cu. In.	Unit Qty.	Wt. Lbs. Per 100*	Max. No. of Conductors
	Cat. # Rigid/IMC	Cat. # Combo EMT, Rigid/IMC	Cat. # Rigid/IMC Body, Traditional Cover & Gasket	Cat. # Combo EMT, Body, Traditional Cover & Gasket	Cat. # NEMA 4 Rigid/IMC Body, Integral Cover & Gasket				
1/2"	LB15	LB15 MT	LB15 CGN	LB15 MTC	LB15 ICG (4.5 Cu. In.)	4.35	10	26	-
3/4"	LB25	LB25 MT	LB25 CGN	LB25 MTC	LB25 ICG (7.5 Cu. In.)	7.30	10	48	#6 AWG
1"	LB35	LB35 MT	LB35 CGN	LB35 MTC	LB35 ICG (10.8 Cu. In.)	12.20	5	64	3 #4 AWG
1 1/4"	LB45	LB45 MT	LB45 CGN	LB45 MTC	-	32.30	2	140	3 #2 AWG
1 1/2"	LB55	LB55 MT	LB55 CGN	LB55 MTC	-	33.80	2	160	3 #1/0 AWG
2"	LB65	LB65 MT	LB65 CGN	LB65 MTC	-	71.20	1	260	3 #3/0 AWG
2 1/2"	LB75	LB75 MT†	LB75 CGN	LB75 MTC	-	71.20	1	500	3 #300MCM
3"	LB85	LB85 MT†	LB85 CGN	LB85 MTC	-	183.50	1	600	3 #300MCM
3 1/2"	LB95	LB95 MT†	LB95 CGN	LB95 MTC	-	304.90	1	900	3 #400MCM
4"	LB105	LB105 MT†	LB105 CGN	LB105 MTC	-	308.00	1	1000	3 #400MCM

\*Weight lbs. per 100 is listed for outlet body only.

†Combo EMT, rigid/IMC fittings greater than 2" trade size are SET SCREW ONLY (not combination threaded and set screw).



### TYPE LR

Size	Outlet Body		SnapPack			Internal Vol. in Cu. In.	Unit Qty.	Wt. Lbs. Per 100*	Max. No. of Conductors
	Cat. # Rigid/IMC	Cat. # Combo EMT, Rigid/IMC	Cat. # Rigid/IMC Body, Traditional Cover & Gasket	Cat. # Combo EMT, Body, Traditional Cover & Gasket	Cat. # NEMA 4 Rigid/IMC Body, Integral Cover & Gasket				
1/2"	LR15	LR15 MT	LR15 CGN	LR15 MTC	LR15 ICG (4.5 Cu. In.)	4.35	10	26	-
3/4"	LR25	LR25 MT	LR25 CGN	LR25 MTC	LR25 ICG (7.5 Cu. In.)	7.30	10	48	#6 AWG
1"	LR35	LR35 MT	LR35 CGN	LR35 MTC	LR35 ICG (10.8 Cu. In.)	12.20	5	64	3 #4 AWG
1 1/4"	LR45	LR45 MT	LR45 CGN	LR45 MTC	-	35.80	2	140	3 #2 AWG
1 1/2"	LR55	LR55 MT	LR55 CGN	LR55 MTC	-	35.80	2	160	3 #1/0 AWG
2"	LR65	LR65 MT	LR65 CGN	LR65 MTC	-	69.70	1	260	3 #3/0 AWG
2 1/2"	LR75	-	LR75 CGN	-	-	69.70	1	500	3 #300MCM
3"	LR85	-	LR85 CGN	-	-	186.00	1	600	3 #350MCM
3 1/2"	LR95	-	LR95 CGN	-	-	306.00	1	900	3 #350MCM
4"	LR105	-	LR105 CGN	-	-	308.00	1	1000	3 #350MCM

\*Weight lbs. per 100 is listed for outlet body only.

# Series 5

## Die Cast Aluminum Conduit Outlet Bodies, Covers & Gaskets



### TYPE LL

Size	Outlet Body		SnapPack			Internal Vol. in Cu. In.	Unit Qty.	Wt. Lbs. Per 100*	Max. No. of Conductors
	Cat. # Rigid/IMC	Cat. # Combo EMT, Rigid/IMC	Cat. # Rigid/IMC Body, Traditional Cover & Gasket	Cat. # Combo EMT, Body, Traditional Cover & Gasket	Cat. # NEMA 4 Rigid/IMC Body, Integral Cover & Gasket				
1/2"	LL15	LL15 MT	LL15 CGN	LL15 MTC	LL15 ICG (4.5 Cu. In.)	4.35	10	30	-
3/4"	LL25	LL25 MT	LL25 CGN	LL25 MTC	LL25 ICG (7.5 Cu. In.)	7.30	10	48	#6 AWG
1"	LL35	LL35 MT	LL35 CGN	LL35 MTC	LL35 ICG (10.8 Cu. In.)	12.20	5	64	3 #4 AWG
1 1/4"	LL45	LL45 MT	LL45 CGN	LL45 MTC	-	35.80	2	140	3 #2 AWG
1 1/2"	LL55	LL55 MT	LL55 CGN	LL55 MTC	-	35.80	2	160	3 #1/0 AWG
2"	LL65	LL65 MT	LL65 CGN	LL65 MTC	-	69.70	1	270	3 #3/0 AWG
2 1/2"	LL75	-	LL75 CGN	-	-	69.70	1	500	3 #300MCM
3"	LL85	-	LL85 CGN	-	-	186.00	1	600	3 #350MCM
3 1/2"	LL95	-	LL95 CGN	-	-	306.00	1	900	3 #350MCM
4"	LL105	-	LL105 CGN	-	-	308.00	1	1000	3 #350MCM

\*Weight lbs. per 100 is listed for outlet body only.



### TYPE C

Size	Outlet Body		SnapPack			Internal Vol. in Cu. In.	Unit Qty.	Wt. Lbs. Per 100*	Max. No. of Conductors
	Cat. # Rigid/IMC	Cat. # Combo EMT, Rigid/IMC	Cat. # Rigid/IMC Body, Traditional Cover & Gasket	Cat. # Combo EMT, Body, Traditional Cover & Gasket	Cat. # NEMA 4 Rigid/IMC Body, Integral Cover & Gasket				
1/2"	C15	C15 MT	C15 CGN	C15 MTC	C15 ICG (4.5 Cu. In.)	4.35	10	27	-
3/4"	C25	C25 MT	C25 CGN	C25 MTC	C25 ICG (7.5 Cu. In.)	7.30	10	40	#6 AWG
1"	C35	C35 MT	C35 CGN	C35 MTC	C35 ICG (10.8 Cu. In.)	12.20	5	64	3 #4 AWG
1 1/4"	C45	C45 MT	C45 CGN	C45 MTC	-	32.30	2	165	3 #2 AWG
1 1/2"	C55	C55 MT	C55 CGN	C55 MTC	-	33.80	2	150	3 #1/0 AWG
2"	C65	C65 MT	C65 CGN	C65 MTC	-	69.50	1	270	3 #2/0 AWG
2 1/2"	C75	-	C75 CGN	-	-	69.50	1	500	3 #250MCM
3"	C85	-	C85 CGN	-	-	188.00	1	600	3 #250MCM
3 1/2"	C95	-	C95 CGN	-	-	307.00	1	900	3 #300MCM
4"	C105	-	C105 CGN	-	-	309.00	1	1000	3 #300MCM

\*Weight lbs. per 100 is listed for outlet body only.

# Series 5

## Die Cast Aluminum Conduit Outlet Bodies, Covers & Gaskets



### TYPE T

Size	Outlet Body		SnapPack			Internal Vol. in Cu. In.	Unit Qty.	Wt. Lbs. Per 100*	Max. No. of Conductors
	Cat. # Rigid/IMC	Cat. # Combo EMT, Rigid/IMC	Cat. # Rigid/IMC Body, Traditional Cover & Gasket	Cat. # Combo EMT, Body, Traditional Cover & Gasket	Cat. # NEMA 4 Rigid/IMC Body, Integral Cover & Gasket				
1/2"	T15	T15 MT	T15 CGN	T15 MTC	T15 ICG (4.5 Cu. In.)	4.35	10	27	-
3/4"	T25	T25 MT	T25 CGN	T25 MTC	T25 ICG (7.5 Cu. In.)	7.30	10	40	#6 AWG
1"	T35	T35 MT	T35 CGN	T35 MTC	T35 ICG (10.8 Cu. In.)	12.20	5	64	3 #4 AWG
1 1/4"	T45	T45 MT	T45 CGN	T45 MTC	-	33.10	2	165	3 #2 AWG
1 1/2"	T55	T55 MT	T55 CGN	T55 MTC	-	33.10	2	150	3 #2 AWG
2"	T65	T65 MT	T65 CGN	T65 MTC	-	67.00	1	270	3 #1 AWG
2 1/2"	T75	-	T75 CGN	-	-	67.00	1	500	3 #3/0 AWG
3"	T85	-	T85 CGN	-	-	175.00	1	600	3 #3/0 AWG
3 1/2"	T95	-	T95 CGN	-	-	298.00	1	900	3 #4/0 AWG
4"	T105	-	T105 CGN	-	-	300.00	1	1000	3 #4/0 AWG

\*Weight lbs. per 100 is listed for outlet body only.



### TYPE TB

Size	Outlet Body		SnapPack			Internal Vol. in Cu. In.	Unit Qty.	Wt. Lbs. Per 100*	Max. No. of Conductors
	Cat. # Rigid/IMC	Cat. # Combo EMT, Rigid/IMC	Cat. # Rigid/IMC Body, Traditional Cover & Gasket	Cat. # Combo EMT, Body, Traditional Cover & Gasket	Cat. # NEMA 4 Rigid/IMC Body, Integral Cover & Gasket				
1/2"	TB15	-	-	-	TB15 ICG (4.5 Cu. In.)	4.50	10	29	-
3/4"	TB25	-	-	-	TB25 ICG (7.5 Cu. In.)	7.50	10	42	3 #6 AWG
1"	TB35	-	-	-	TB35 ICG (10.8 Cu. In.)	10.80	5	58	3 #4 AWG
1 1/4"	TB45	-	-	-	-	32.30	2	110	3 #2 AWG
1 1/2"	TB55	-	-	-	-	34.20	2	109	3 #2 AWG
2"	TB65	-	-	-	-	71.40	1	192	3 #2/0 AWG

\*Weight lbs. per 100 is listed for outlet body only.



### TYPE X

Size	Outlet Body		SnapPack			Internal Vol. in Cu. In.	Unit Qty.	Wt. Lbs. Per 100*	Max. No. of Conductors
	Cat. # Rigid/IMC	Cat. # Combo EMT, Rigid/IMC	Cat. # Rigid/IMC Body, Traditional Cover & Gasket	Cat. # Combo EMT, Body, Traditional Cover & Gasket	Cat. # NEMA 4 Rigid/IMC Body, Integral Cover & Gasket				
1/2"	X15	-	-	-	X15 ICG (4.5 Cu. In.)	4.50	10	31	-
3/4"	X25	-	-	-	X25 ICG (7.5 Cu. In.)	7.50	10	47	3 #6 AWG
1"	X35	-	-	-	X35 ICG (10.8 Cu. In.)	10.80	5	62	3 #4 AWG
1 1/4"	X45	-	-	-	-	32.30	2	118	3 #2 AWG
1 1/2"	X55	-	-	-	-	34.20	2	118	3 #2 AWG
2"	X65	-	-	-	-	71.40	1	213	3 #2/0 AWG

\*Weight lbs. per 100 is listed for outlet body only.

# Series 5

## Die Cast Aluminum Conduit Outlet Bodies, Covers & Gaskets

### INTEGRAL GASKET COVERS

Aluminum Cover with Neoprene Integral Gasket



Size	Cat. #	Unit Qty.	Wt. Lbs. Per 100
1/2"	150G	50	6
3/4"	250G	50	7
1"	350G	50	8
1 1/4" - 1 1/2"	450G	50	17
2"	650G	25	26
2 1/2" - 3"	850G	10	80
3 1/2" - 4"	950G	10	145

1/2" - 3" are NEMA 4 rated.

### ALUMINUM COVERS

Aluminum



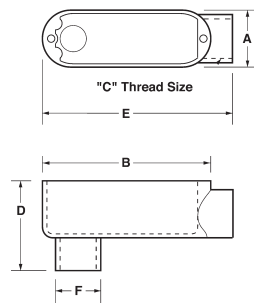
Size	Cat. #	Unit Qty.	Wt. Lbs. Per 100
1/2"	150	50	5
3/4"	250	50	6
1"	350	50	7
1 1/4" - 1 1/2"	450	50	15
2"	650	25	24
2 1/2" - 3"	850D	10	78
3 1/2" - 4"	950D	10	140

### GASKETS

Neoprene

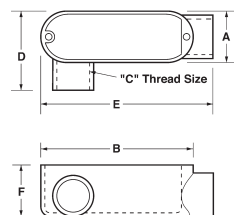


Size	Cat. #	Unit Qty.	Wt. Lbs. Per 100
1/2"	GASK015N	50	2
3/4"	GASK025N	50	2
1"	GASK035N	50	3
1 1/4" - 1 1/2"	GASK045N	50	6
2"	GASK065N	25	10
2 1/2" - 3"	GASK085N	10	20
3 1/2" - 4"	GASK095N	10	30



### Type LB Dimensions (in Inches) – Threaded & Set Screw:

Size	A	B	C	D	E	F
1/2"	1.31	3.87	0.50	2.11	4.24	1.07
3/4"	1.53	4.67	0.75	2.38	4.97	1.28
1"	1.74	5.37	1.00	2.74	5.79	1.56
1 1/4"	2.49	7.23	1.25	3.50	7.79	1.99
1 1/2"	2.49	7.23	1.50	3.65	7.81	2.27
2"	3.10	9.46	2.00	4.24	10.20	2.91
2 1/2"	4.44	12.22	2.50	5.75	13.14	3.43
3"	4.44	12.22	3.00	6.41	13.14	4.13
3 1/2"	5.42	14.83	3.50	7.11	15.46	4.65
4"	5.42	14.83	4.00	7.20	15.46	5.16



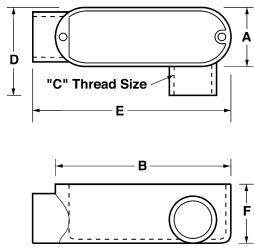
### Type LR Dimensions (in Inches) – Threaded & Set Screw:

Size	A	B	C	D	E	F
1/2"	1.31	3.87	0.50	2.06	4.40	1.40
3/4"	1.53	4.67	0.75	2.28	5.07	1.64
1"	1.74	5.37	1.00	2.51	5.94	1.90
1 1/4"	2.49	7.23	1.25	3.50	7.87	2.85
1 1/2"	2.49	7.23	1.50	3.50	7.87	2.85
2"	3.10	9.46	2.00	3.83	9.88	3.41
2 1/2"	4.50	12.22	2.50	6.00	13.14	4.00
3"	4.65	12.22	3.00	6.10	13.00	4.70
3 1/2"	5.42	14.83	3.50	6.40	15.45	5.43
4"	5.42	14.83	4.00	6.40	15.45	5.43

# Series 5

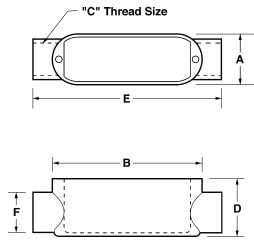
## Die Cast Aluminum Conduit Outlet Bodies, Covers & Gaskets

Series 5



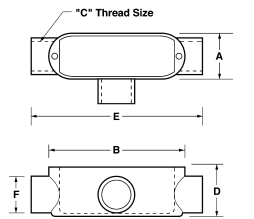
### Type LL Dimensions (in Inches) – Threaded & Set Screw:

Size	A	B	C	D	E	F
1/2"	1.31	3.87	0.50	2.06	4.40	1.40
3/4"	1.53	4.67	0.75	2.28	5.07	1.64
1"	1.74	5.37	1.00	2.68	5.94	1.90
1 1/4"	2.49	7.23	1.25	3.50	7.87	2.85
1 1/2"	2.49	7.23	1.50	3.50	7.87	2.85
2"	3.10	9.46	2.00	3.83	10.20	3.41
2 1/2"	4.50	12.22	2.50	6.00	13.14	4.00
3"	4.65	12.22	3.00	6.10	13.00	4.70
3 1/2"	5.42	14.83	3.50	6.05	15.35	5.43
4"	5.42	14.83	4.00	6.05	15.35	5.43



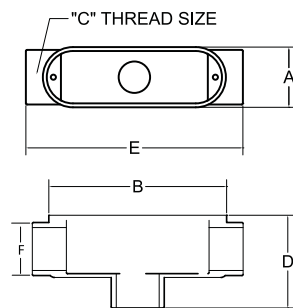
### Type C Dimensions (in Inches) – Threaded & Set Screw:

Size	A	B	C	D	E	F
1/2"	1.31	3.87	0.50	1.40	4.82	1.07
3/4"	1.53	4.67	0.75	1.64	5.50	1.35
1"	1.74	5.37	1.00	1.90	6.44	1.67
1 1/4"	2.49	7.23	1.25	2.73	8.45	2.27
1 1/2"	2.49	7.23	1.50	2.73	8.45	2.27
2"	3.10	9.46	2.00	3.41	10.71	2.91
2 1/2"	4.50	12.22	2.50	4.30	14.00	3.50
3"	4.65	12.22	3.00	4.66	13.80	4.13
3 1/2"	5.42	14.83	3.50	5.36	16.10	5.30
4"	5.42	14.83	4.00	5.36	16.10	5.30



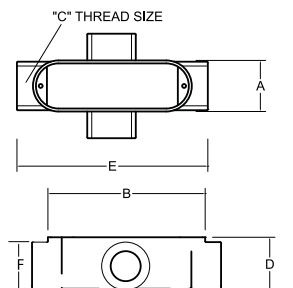
### Type T Dimensions (in Inches) – Threaded & Set Screw:

Size	A	B	C	D	E	F
1/2"	1.31	3.87	0.50	1.40	4.82	1.07
3/4"	1.53	4.67	0.75	1.64	5.40	1.35
1"	1.74	5.37	1.00	1.90	6.33	1.15
1 1/4"	2.49	7.23	1.25	2.73	8.45	2.27
1 1/2"	2.49	7.23	1.50	2.73	8.45	2.27
2"	3.10	9.46	2.00	3.41	10.71	2.91
2 1/2"	4.50	12.22	2.50	4.00	14.00	3.50
3"	4.65	12.22	3.00	4.66	13.80	4.13
3 1/2"	5.42	14.83	3.50	5.40	16.00	5.30
4"	5.42	14.83	4.00	5.40	16.00	5.30



### Type TB Dimensions (in Inches) – Threaded & Set Screw:

Size	A	B	C	D	E	F
1/2"	1.31	3.92	0.50	2.10	4.72	1.07
3/4"	1.53	4.64	0.75	2.40	5.51	1.28
1"	1.74	5.38	1.00	2.77	6.47	1.56
1 1/4"	2.49	7.24	1.25	3.53	8.25	1.99
1 1/2"	2.49	7.24	1.50	3.53	8.25	2.27
2"	3.10	9.50	2.00	4.50	10.50	2.91



### Type X Dimensions (in Inches) – Threaded & Set Screw:

Size	A	B	C	D	E	F
1/2"	1.31	3.92	0.50	1.37	4.72	1.07
3/4"	1.53	4.64	0.75	1.63	5.51	1.28
1"	1.74	5.38	1.00	1.88	6.47	1.56
1 1/4"	2.49	7.24	1.25	2.51	8.25	1.99
1 1/2"	2.49	7.24	1.50	2.50	8.25	2.27
2"	3.10	9.50	2.00	3.40	10.50	2.91