



ELLIOTT ELECTRIC SUPPLY

We Deliver...Lower Cost, Quality Products, & Personal Service

3804 South Street
75964-7263, TX Nacogdoches
Phone: 936-569-7941
Fax: 936-560-4685



N423CV 4/0 Nail On Plastic Box

Thomas&Betts-Abb Ins Prod

Catalog Number	N423CV
Manufacturer	Thomas&Betts-Abb Ins Prod
Description	Nail On Ceiling Box, Non-Metallic Material, Black, 22.5 Cu.In Capacity, Round, Adjustable Bar Hanger, 2-1/2 In Height, 4 In Diameter, 25 LB/100
Weight per unit	0.2500 (lbs/each)
Product Category	Non-Metallic

Features

Knockouts	NO
-----------	----

Descriptions

Description	4/0 NAIL ON PLASTIC BOX
-------------	-------------------------

Manufacturer Information

Brand	Union Box/CVR
GTIN	00785991020687
UPC	785991020687

Taxonomies, Classifications, and Categories

Category Description	PLASTIC BOXES
Type	Ceiling Boxes

Packaging

Carton	50
Weight Per each	0.25

Uses, Certifications, and Standards

Mounting standard	16 Inch adjustable bar hanger UL E11461
-------------------	--

Polycarbonate Boxes

Carlton® Black Polycarbonate Boxes

Carlton® non-metallic boxes feature a rugged polycarbonate construction to withstand extreme temperatures. The boxes will not distort or soften in heat and they won't become brittle in the cold.

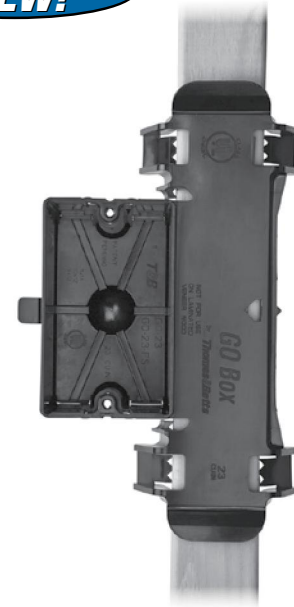
- All Polycarbonate boxes are listed to UL514C
- All Polycarbonate boxes are listed for masonry walls
- All Polycarbonate boxes are UL® Classified for 2-hr. fire wall and/or fire ceiling
- All Polycarbonate boxes meet NEMA OS-2
- All Polycarbonate boxes are permissible for use with 90° C conductors
- UL® File E11461 and R9140

Grip-On GO Box® Single-Gang Outlet Box

- Instead of nails or other fasteners, unique clamps are used to hold the box securely in place. Simply push onto the stud and go
- The GO Box® outlet box is removable for easy repositioning
- "Fast-Set" mounting holes enable quick installation of devices
- Perfectly aligned every time
- Perfect for drywall depth
- A locator hole in the mounting bracket helps position the box on marked studs for accurate installation

- The GO Box® design is UL® Listed
- 23.0 cu. in. capacity accommodates large devices and enables easy installation of wiring

It's a whole new ball game for high-volume residential products. That's because the Carlton® GO Box® product line is one of the most revolutionary labor-saving products ever designed. The GO stands for "Grip-On" and that's exactly how it works. Just push the box onto a stud and the specially designed clamps hold it in place. No tools or fasteners are required, reducing installation time, which means you can move on to the next job. When it comes to lower installed costs, this changes everything!



One-Gang 23.0 Cu. In.



CAT. NO.	SIZE CU. IN.	MOUNTING MEANS	DESCRIPTION	DIMENSIONS (IN.)	STD. CTN.
GO-23	23.0	Grip-On Bracket	—	3¼ L x 2¼ W x 2½ D	30
GO-23-FS	23.0	Grip-On Bracket	Fast-Set	3¼ L x 2¼ W x 2½ D	30

One-Gang Nail-On 18.0–22.5 Cu. In.



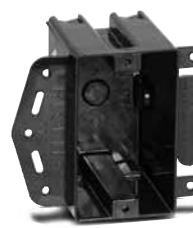
CAT. NO.	SIZE CU. IN.	MOUNTING MEANS	DESCRIPTION	DIMENSIONS (IN.)	STD. CTN.
118-N	18.0	Angled Side Nails	—	3¼ L x 2¼ W x 2½ D	100
120-N	20.3	Angled Side Nails	—	3¼ L x 2¼ W x 3⅜ D	100
120-N-FS	20.3	Angled Side Nails	Fast-Set	3¼ L x 2¼ W x 3⅜ D	100
122-N	22.5	Angled Side Nails	—	3¼ L x 2¼ W x 3⅜ D	100
122-N-FS	22.5	Angled Side Nails	Fast-Set	3¼ L x 2¼ W x 3⅜ D	100

Polycarbonate Boxes

New Work Boxes

One-Gang Brackets 18.0–22.5 Cu. In.

CAT. NO.	SIZE CU. IN.	MOUNTING MEANS	DESCRIPTION	DIMENSIONS (IN.)	STD. CTN.
118-LB	18.0	Molded Side Bracket for Wood/Steel Studs	—	3¾ L x 2¼ W x 2¾ D	100
118-LBP	18.0	Molded Side Bracket for Wood/Steel Studs	POSI-SET® Fast-Set	3¾ L x 2¼ W x 2¾ D	100
120-LB	20.3	Molded Side Bracket for Wood/Steel Studs	—	3¾ L x 2¼ W x 3⅝ D	100
120-LBP	20.3	Molded Side Bracket for Wood/Steel Studs	POSI-SET® Fast-Set	3¾ L x 2¼ W x 3⅝ D	100
122-LB	22.5	Molded Side Bracket for Wood/Steel Studs	—	3¾ L x 2¼ W x 3⅝ D	100
122-LBP	22.5	Molded Side Bracket for Wood/Steel Studs	POSI-SET® Fast-Set	3¾ L x 2¼ W x 3⅝ D	100



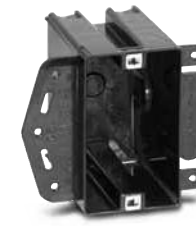
118-LB



118-LBP



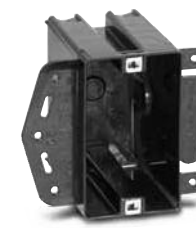
120-LB



120-LBP



122-LB



122-LBP

Two-Gang Nail-On 34.0 Cu. In.

CAT. NO.	SIZE CU. IN.	MOUNTING MEANS	DESCRIPTION	DIMENSIONS (IN.)	STD. CTN.
234-N	34.0	Angled Side Rails	POSI-WEDGE® Cable Clamps	3¾ L x 4 W x 3⅝ D	50
234-NP	34.0	Angled Side Rails	POSI-WEDGE® POSI-SET®	3¾ L x 4 W x 3⅝ D	50



234-N



234-NP

Two-Gang Bracket 34.0 Cu. In.

CAT. NO.	SIZE CU. IN.	MOUNTING MEANS	DESCRIPTION	DIMENSIONS (IN.)	STD. CTN.
234-LB	34.0	Steel Side Bracket for Wood/Steel Studs	POSI-WEDGE® Cable Clamps	3¾ L x 4 W x 3⅝ D	50



234-LB

Boxes & Covers — Carlton® Non-Metallic Boxes

Polycarbonate Boxes

New Work Boxes

Boxes & Covers — Carlton® Non-Metallic Boxes

Three-Gang Nail-On 45.0 Cu. In.

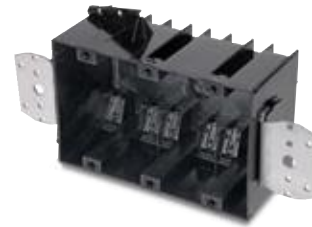
CAT. NO.	SIZE CU. IN.	MOUNTING MEANS	DESCRIPTION	DIMENSIONS (IN.)	STD. CTN.
345-N	45.0	Angled Side Nails & Steel Side Brackets	POSI-WEDGE® Cable Clamps	3¾ L x 5¼ W x 2¼ D	20



345-N

Three-Gang Bracket 45 Cu. In.

CAT. NO.	SIZE CU. IN.	MOUNTING MEANS	DESCRIPTION	DIMENSIONS (IN.)	STD. CTN.
345-LB	45.0	Steel Side Bracket for Wood/Steel Studs	POSI-WEDGE® Cable Clamps	3¾ L x 5¼ W x 2¼ D	25



345-LB

Four-Gang Nail-On 60 Cu. In.

CAT. NO.	SIZE CU. IN.	MOUNTING MEANS	DESCRIPTION	DIMENSIONS (IN.)	STD. CTN.
460-SB	60.0	Angled Side Nails & Back Bracket	POSI-WEDGE® Cable Clamps	3¾ L x 7¼ W x 2¼ D	10
460-SB-24 **	60.0	Angled Side Nails & Back Bracket	POSI-WEDGE® Cable Clamps	3¾ L x 7¼ W x 2¼ D	10

• 24" adjustable bracket.

* Not UL Classified for fire wall and/or fire ceiling



460-SB

460-SB-24

Four-Gang Bracket 60 Cu. In.

CAT. NO.	SIZE CU. IN.	MOUNTING MEANS	DESCRIPTION	DIMENSIONS (IN.)	STD. CTN.
460-LB	60.0	Steel Side Brackets	POSI-WEDGE® Cable Clamps	3¾ L x 7¼ W x 2¼ D	8

* Not UL Classified for fire wall and/or fire ceiling



460-LB

Polycarbonate Boxes

New Work Box

4" Square Boxes 32.0 Cu. In.



CAT. NO.	SIZE CU. IN.	MOUNTING MEANS	DESCRIPTION	DIMENSIONS (IN.)	STD. CTN.
4S-32-N	32.0	Angled Side Nails	POSI-WEDGE® Cable Clamps	4 L x 4 W x 3 ³ / ₁₆ D	50



4S-32-N

Old Work Boxes

One-Gang 14.0 Cu. In.



CAT. NO.	SIZE CU. IN.	MOUNTING MEANS	DESCRIPTION	DIMENSIONS (IN.)	STD. CTN.
114-OW	14.0	Swing-Ear Brackets	—	3 ³ / ₄ L x 2 ¹ / ₄ W x 3 D	50

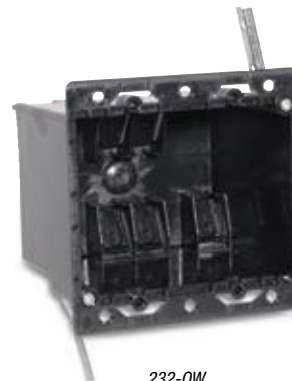


114-OW

Two-Gang 32.0 Cu. In.



CAT. NO.	SIZE CU. IN.	MOUNTING MEANS	DESCRIPTION	DIMENSIONS (IN.)	STD. CTN.
232-OW	32.0	Swing-Ear Brackets	POSI-WEDGE® Cable Clamps	3 ³ / ₈ L x 4 ¹ / ₁₆ W x 3 ³ / ₁₆ D	50



232-OW

Boxes & Covers — Carlton® Non-Metallic Boxes

Polycarbonate Boxes

Energy-Efficient Vapor Barrier Boxes

Vapor-barrier boxes are designed to meet the energy-efficiency requirements of modern homes. They feature a drywall flange covered with a foam gasket and additional gaskets over the cable entry points. These gaskets provide a vapor-tight seal, preventing the free flow of air through the box. This helps control heating costs in the winter and cooling costs in the summer.

- High-strength polycarbonate construction — will not shatter when cold or distort in heat
- V-clamps provide self-clamping cable entry (multi-gang and fan/fixture box)
- ½" offset flange to ensure a flush fit in ½" drywall
- Angled side nails for rapid installation
- Pre-drilled flanges for additional mounting options



FN-23



FN-236-V



FN-354-V



FN-460-V

One-, Two-, Three- and Four-Gang



CAT. NO.	SIZE CU. IN.	MOUNTING MEANS	DESCRIPTION	DIMENSIONS (IN.)	STD. CTN.
FN-23	22.5	Angled Side Nails	Vapor Barrier	3½ L x 2¼ W x 3⅝ D	50
FN-236-V	36.0	Angled Side Nails	Vapor Barrier	3½ x 4 x 3¼ D	50
FN-354-V	54.0	Angled Side Nails	Vapor Barrier	3½ x 5⅝ x 3¼ D	20
FN-460-V*	60.0	Angled Side Nails	Vapor Barrier	3½ x 7½ x 2¼ D	10

*Not UL Classified for fire wall and/or fire ceiling.

Ceiling Fixture Box 26.0 Cu. In.



CAT. NO.	SIZE CU. IN.	MOUNTING MEANS	DESCRIPTION	DIMENSIONS (IN.)	STD. CTN.
FN-426-C-V	26.0	Angled Side Nails	—	4 L x 4 W x 2¼ D	50

Listed for fixture support up to 50 lbs.



FN-426-C-V

Ceiling Fan/Fixture 26.0 Cu. In.



CAT. NO.	SIZE CU. IN.	MOUNTING MEANS	DESCRIPTION	DIMENSIONS (IN.)	STD. CTN.
FN-CFB	26.0	#3 Bracket	—	4 L x 4 W x 2¼ D	50

Listed for fan support up to 35 lbs. and fixture support up to 50 lbs.



FN-CFB

Voltage Partition



CAT. NO.	DESCRIPTION	STD. CTN.
FNP	Voltage Partition for NG & FN Series Multi-Gang Boxes	50

Polycarbonate Boxes

Saddle-Type Fan/Fixture 16.0 Cu. In.



CAT. NO.	SIZE CU. IN.	MOUNTING MEANS	DESCRIPTION	DIMENSIONS (IN.)	STD. CTN.
CFB-16-F	16.0	Center Screw	Ceiling Fan/Fixture	4 L x 4 W x 3 ³ / ₁₆ D	50

Listed for fan support up to 70 lbs. and fixture support up to 70 lbs.



CFB-16-F

Universal Flanged Nail-On Boxes



Two-, Three- and Four-Gang

CAT. NO.	SIZE CU. IN.	MOUNTING MEANS	DESCRIPTION	DIMENSIONS (IN.)	STD. CTN.
NG-236-V •	36.0	Angled Side Nails	2-Gang Wall	3 ¹ / ₂ L x 4 W x 3 ¹ / ₄ D	50
NG-354-V •	54.0	Angled Side Nails	3-Gang Wall	3 ¹ / ₂ L x 5 ³ / ₄ W x 3 ¹ / ₄ D	20
NG-460-V •*	60.0	Angled Side Nails	4-Gang Wall	3 ¹ / ₂ L x 7 ¹ / ₂ W x 2 ³ / ₄ D	10

• NG Boxes have 1/2" offset wallboard flange and V-type cable entry.

* Not UL Classified for fire wall and/or fire ceiling.



NG-236-V



NG-354-V



NG-460-V

Voltage Partition



CAT. NO.	DESCRIPTION	STD. CTN.
FNP	Voltage Partition for NG & FN Series Multi-Gang Boxes	50

Boxes & Covers — Carlton® Non-Metallic Boxes

Polycarbonate Boxes

Ceiling Boxes

All ceiling boxes are produced from a high heat-resistant material developed specifically for fixture support applications.

- Meets NEMA OS-2
- UL Listed to UL 514C



N-321-GC



N-321-C



3½" 20.5 Cu. In.

CAT. NO.	SIZE CU. IN.	MOUNTING MEANS	DESCRIPTION	DIMENSIONS (IN.)	STD. CTN.
N-321-C •	20.5	Angled Side Nails	Molded Fast Clamps	3½ Dia. x 3¼ D	50
N-321-GC •	20.5	Angled Side Nails	Molded Fast Clamps, Ground Strap Installed	3½ Dia. x 3¼ D	50

- Listed for fixture support up to 50 lbs.



N-423-C-V



N-423-GC-V



4" 22.5 Cu. In.

CAT. NO.	SIZE CU. IN.	MOUNTING MEANS	DESCRIPTION	DIMENSIONS (IN.)	STD. CTN.
N-423-C-V •	22.5	Angled Side Nails	Molded V-Clamps	4 Dia. x 2½ D	50
N-423-GC-V •	22.5	Angled Side Nails	Molded Fast Clamps	4 Dia. x 2½ D	50

- Listed for fixture support up to 50 lbs.

Polycarbonate Boxes

Boxes & Covers — Carlton® Non-Metallic Boxes



B518P-UPC



3/0 18 Cu. In.

CAT. NO.	SIZE CU. IN.	MOUNTING MEANS	DESCRIPTION	DIMENSIONS (IN.)	STD. CTN.
B518A-UPC •	18.0	Captive Nails	—	3 Dia. x 2¾ D	75
B518P-UPC •	18.0	Captive Nails	Ground Lug and Screw Attached	3 Dia. x 2¾ D	75

• Listed for fixture support up to 50 lbs.



B520A-UPC



B620L-UPC



B520P-UPC



B720R-SHK
35 lbs. maximum fan weight



3/0-4/0 Combination 20 Cu. In.

CAT. NO.	SIZE CU. IN.	MOUNTING MEANS	DESCRIPTION	DIMENSIONS (IN.)	STD. CTN.
B520A-UPC •	20.0	Captive Nails	Ground Lug and Screw Attached Fixture Spacing for 2¾" and 3"	4 Dia. x 2¼ D	75
B520P-UPC •	20.0	Captive Nails	Ground Lug and Screw Attached	4 Dia. x 2¼ D	75
B620L-UPC •	20.0	Metal L Bracket	Fixture Spacing for 2¾" and 3½"	4 Dia. x 2¼ D	100
B720R-SHK •	20.0	Mounting Screws	—	4 Dia. x 2¼ D	18

• Listed for fixture support up to 50 lbs.

Polycarbonate Boxes

Ceiling Boxes with Bar Hanger

- Meets NEMA OS-2



N-321-C-94



N-321-GC-94



N-321-C-95



N-321-GC-95

3½" 20.5 Cu. In.



CAT. NO.	SIZE CU. IN.	MOUNTING MEANS	DESCRIPTION	DIMENSIONS (IN.)	STD. CTN.
N-321-C-94 •	20.5	16" Bar Hanger, 12¼" Min.–19" Max.	Molded Fast Clamps	3½ Dia. x 3½ D	50
N-321-GC-94 •	20.5	16" Bar Hanger, 12¼" Min.–19" Max.	Molded Fast Clamps, Ground Strap Installed	3½ Dia. x 3½ D	50
N-321-C-95 •	20.5	24" Bar Hanger, 16½" Min.–27" Max.	Molded Fast Clamps	3½ Dia. x 3½ D	50
N-321-GC-95 •	20.5	24" Bar Hanger, 16½" Min.–27" Max.	Molded Fast Clamps, Ground Strap Installed	3½ Dia. x 3½ D	50

- Listed for fixture support up to 50 lbs.



N-423-C-94-V



N-423-GC-94-V



N-423-C-95-V



N-423-GC-95-V

4" 22.5 Cu. In.



CAT. NO.	SIZE CU. IN.	MOUNTING MEANS	DESCRIPTION	DIMENSIONS (IN.)	STD. CTN.
N-423-C-94-V •	22.5	16" Bar Hanger, 12¼" Min.–19" Max.	Molded Fast Clamps	4 Dia. x 2½ D	50
N-423-GC-94-V •	22.5	16" Bar Hanger, 12¼" Min.–19" Max.	Molded Fast Clamps, Ground Strap Installed	4 Dia. x 2½ D	50
N-423-C-95-V •	22.5	24" Bar Hanger, 16½" Min.–27" Max.	Molded Fast Clamps	4 Dia. x 2½ D	50
N-423-GC-95-V •	22.5	24" Bar Hanger, 16½" Min.–27" Max.	Molded Fast Clamps, Ground Strap Installed	4 Dia. x 2½ D	50

- Listed for fixture support up to 50 lbs.

Polycarbonate Boxes

Boxes & Covers — Carlton® Non-Metallic Boxes



B620DC



B620HG-UPC



B620K



B620H-UPC



B620KG-UPC

3/0-4/0 Combination 20.0 Cu. In.



CAT. NO.	SIZE CU. IN.	MOUNTING MEANS	DESCRIPTION	DIMENSIONS (IN.)	STD. CTN.
B620DC •	20.0	24" T-Grid Bar Hanger	Ceiling Box Fixture Spacing for 2¾" and 3½"	4 Dia. x 2¼ D	18
B620HG-UPC •	20.0	11.50"-14.50" Adjustable Bar Hanger Ground Lug and Screw Attached	Ceiling Box Fixture Spacing for 2¾" and 3½"	4 Dia. x 2¼ D	75
B620H-UPC •	20.0	11.50"-14.50" Adjustable Bar Hanger	Ceiling Box Fixture Spacing for 2¾" and 3½"	4 Dia. x 2¼ D	75
B620K •	20.0	14.38"-22.50" Adjustable Bar Hanger	Ceiling Box Fixture Spacing for 2¾" and 3½"	4 Dia. x 2¼ D	75
B620KG-UPC •	20.0	14.38"-22.50" Adjustable Bar Hanger Ground Lug and Screw Attached	Ceiling Box Fixture Spacing for 2¾" and 3½"	4 Dia. x 2¼ D	75

• Listed for fixture support up to 50 lbs.

Polycarbonate Boxes

Ceiling Boxes



3R-16-N



3R-16-NGP

3½" Nail-On 16.0 Cu. In.



CAT. NO.	SIZE CU. IN.	MOUNTING MEANS	DESCRIPTION	DIMENSIONS (IN.)	STD. CTN.
3R-16-N •	16.0	Angled Nails	POSI-WEDGE® Cable Clamps	2¼	50
3R-16-NGP •	16.0	Angled Nails	POSI-WEDGE® Cable Clamps	2¼	50

• Listed for fixture support up to 50 lbs.



3R-16-BH



3R-16-BHGP

3½" Ceiling Box with Bar Hanger 16.0 Cu. In.



CAT. NO.	SIZE CU. IN.	MOUNTING MEANS	DESCRIPTION	DIMENSIONS (IN.)	STD. CTN.
3R-16-BH •	16.0	Adjustable 16"–24" Bar Hanger	POSI-WEDGE® Cable Clamps	2¼	25
3R-16-BHGP •	16.0	Adjustable 16"–24" Bar Hanger	POSI-WEDGE® Cable Clamps	2¼	25

• Listed for fixture support up to 50 lbs.

NEW!



3R-16-N-RED

3½" Fire Alarm Nail-On 16.0 Cu. In.



CAT. NO.	SIZE CU. IN.	MOUNTING MEANS	DESCRIPTION	DIMENSIONS (IN.)	STD. CTN.
3R-16-N-RED •	16.0	Angled Nails	POSI-WEDGE® Cable Clamps	2¼	50

• Red ceiling box for fire alarm applications.

• Listed for fixture support up to 50 lbs.

Polycarbonate Boxes

Saddle-Type Ceiling Fan Boxes

Boxes & Covers — Carlton® Non-Metallic Boxes



CFB-12



Easy press-fit onto the joist. Integrally molded ribs grip the joist and stop the box from falling.



Just one hand is required to mount the box using the pre-located mounting screw.



CFB-16



Integrally molded cable V-clamps provide easy and secure clamping for non-metallic cables.



CFB-16 features 1/2" KOs in addition to V-clamps.

Saddle-Type Fan 12.0–16.0 Cu. In.



CAT. NO.	SIZE CU. IN.	MOUNTING MEANS	DEPTH (IN.)	STD. CTN.
CFB-12 •	12.0	Non-Metallic Saddle-Type Ceiling Fan Box with V-Clamps for Non-Metallic Sheathed Cable	2 1/4	50
CFB-16 •	16.0	Non-Metallic Saddle-Type Ceiling Fan Box with V-Clamps for Non-Metallic Sheathed Cable and Two 1/2" KOs	2 1/4	50

• Listed for fan support up to 70 lbs. and fixture support up to 70 lbs.

Old Work

4" Round 18.0 Cu. In.



CAT. NO.	SIZE CU. IN.	MOUNTING MEANS	DESCRIPTION	DIMENSIONS (IN.)	STD. CTN.
B618R-UPC •	18.0	Swing Clamps	—	4 1/4 Dia.	100
B618RP-UPC •	18.0	Swing Clamps	Ground Lug	4 1/4 Dia.	100

• Not UL Classified for Fire Resistance or used for fixture support in the ceiling.



B618R-UPC