

Single Gang:

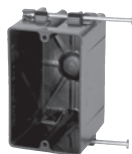
Residential Switch or Receptacle Box

Series P-181



Cu. In. Volume	Catalog Number	Component Description	D	W	H	UPC# 85339	Std. Pkg. Qty.	Std. Pkg. Wt. (lb.)
18.0	P-181*	Single gang, angled mid-nails	2-5/8	2-1/4	3-3/4	24391	100	19
18.0	P-181QT	Single gang, angled mid-nails, Quick Thread™ device holes	2-5/8	2-1/4	3-3/4	24399	100	19

P-181RK



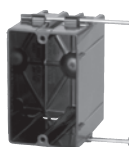
Cu. In. Volume	Catalog Number	Component Description	D	W	H	UPC# 85339	Std. Pkg. Qty.	Std. Pkg. Wt. (lb.)
18.0	P-181RK	Single gang, reverse nails, molded-in Speed Klamps™	2-5/8	2-1/4	3-3/4	24398	100	19

Series P-201



Cu. In. Volume	Catalog Number	Component Description	D	W	H	UPC# 85339	Std. Pkg. Qty.	Std. Pkg. Wt. (lb.)
20.5	P-201*	Single gang, angled nails	3-1/16	2-1/4	3-3/4	24900	100	23
20.5	P-201QT	Single gang, angled nails, Quick Thread™ device holes	3-1/16	2-1/4	3-3/4	24909	100	23

P-201R



Cu. In. Volume	Catalog Number	Component Description	D	W	H	UPC# 85339	Std. Pkg. Qty.	Std. Pkg. Wt. (lb.)
20.5	P-201R	Single gang, reverse nails	3-1/16	2-1/4	3-3/4	24901	100	23

Series P-241



Cu. In. Volume	Catalog Number	Component Description	D	W	H	UPC# 85339	Std. Pkg. Qty.	Std. Pkg. Wt. (lb.)
24.0	P-241*	Single gang, angled nails	3-9/16	2-1/4	3-3/4	24903	100	24
24.0	P-241QT	Single gang, angled nails Quick Thread™ device holes	3-9/16	2-1/4	3-3/4	24904	100	24

Series P-241H



Cu. In. Volume	Catalog Number	Component Description	D	W	H	UPC# 85339	Std. Pkg. Qty.	Std. Pkg. Wt. (lb.)
24.0	P-241H*	Single gang, side mount hanger	3-9/16	2-1/4	3-3/4	24907	50	14
24.0	P-241HQT	Single gang, side mount hanger Quick Thread™ device holes	3-9/16	2-1/4	3-3/4	24908	50	14

P-1220W



Cu. In. Volume	Catalog Number	Component Description	D	W	H	UPC# 85339	Std. Pkg. Qty.	Std. Pkg. Wt. (lb.)
22.5	P-1220W	Single gang, ears, wing brackets, molded-in Speed Klamps™	3-3/4	2-19/64	3-11/16	24913	48	13

* Indicates model shown • See page 32 for Attachment Coding descriptions

