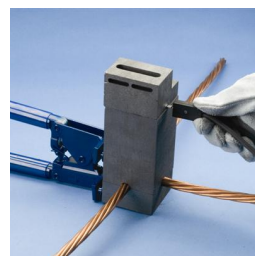
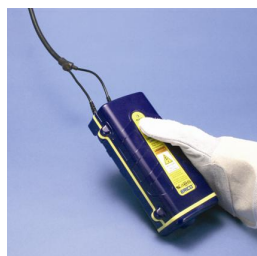


ERICO CADWELD PLUS Control Unit – PLUSCU



- Battery-powered controller box designed for 600 connections with one set of batteries
- Requires no special batteries or charger
- Comes standard with high temperature lead
- Connects to the welding material ignition strip with a custom made, purpose-designed termination clip
- Sends a predetermined voltage to the ignition strip and initiates the reaction
- The PBPLUSCU control unit electronic ignitor is primarily designed for ignition of ERICO CADWELD PLUS WELDING MATERIAL, F80
- PBPLUSCU meets AREMA® C&S Manual Recommendations; Part 8.1.34, 2013



Part Number	PLUSCU
Type	Controller Box with Leads
Cable Length	6'
Batteries	8 Standard AA Batteries
Working Temperature	0 – 130 °F
Certifications	cURus NOM
Standard Packaging Quantity	1 pc
UPC	78285647613
EAN-13	8711893032499

All ERICO CADWELD PLUS connections on rail properties must be installed using ERICO CADWELD PLUS Welding Material, F80.

AREMA is a registered trademark of American Railway Engineering and Maintenance-of-Way Association, Inc. UL, UR, cUL, cUR, cULus and cURus are registered certification marks of UL LLC.

WARNING

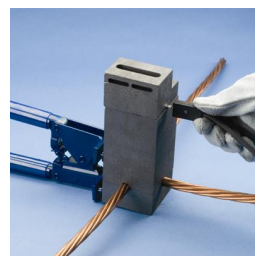
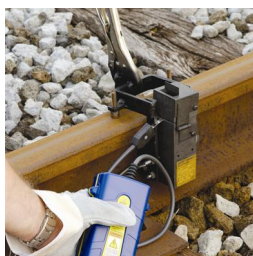
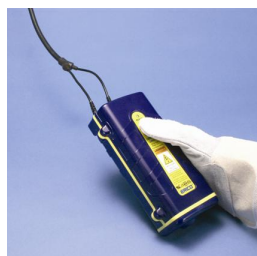
Pentair products shall be installed and used only as indicated in Pentair's product instruction sheets and training materials. Instruction sheets are available at erico.pentair.com and from your Pentair customer service representative. Improper installation, misuse, misapplication or other failure to completely follow Pentair's instructions and warnings may cause product malfunction, property damage, serious bodily injury and death and/or void your warranty.

© 2017 Pentair All rights reserved

Pentair, CADDY, CADWELD, CRITEC, ERICO, ERIFLEX, ERITECH and LENTON are owned by Pentair or its global affiliates.

All other trademarks are the property of their respective owners. Pentair reserves the right to change specifications without prior notice.

ERICO CADWELD PLUS Control Unit – PLUSCU



- Battery-powered controller box designed for 600 connections with one set of batteries
- Requires no special batteries or charger
- Comes standard with high temperature lead
- Connects to the welding material ignition strip with a custom made, purpose-designed termination clip
- Sends a predetermined voltage to the ignition strip and initiates the reaction
- The PBPLUSCU control unit electronic ignitor is primarily designed for ignition of ERICO CADWELD PLUS WELDING MATERIAL, F80
- PBPLUSCU meets AREMA® C&S Manual Recommendations; Part 8.1.34, 2013



Part Number	PLUSCU
Type	Controller Box with Leads
Cable Length	6'
Batteries	8 Standard AA Batteries
Working Temperature	0 – 130 °F
Certifications	cURus NOM
Standard Packaging Quantity	1 pc
UPC	78285647613
EAN-13	8711893032499

All ERICO CADWELD PLUS connections on rail properties must be installed using ERICO CADWELD PLUS Welding Material, F80.

AREMA is a registered trademark of American Railway Engineering and Maintenance-of-Way Association, Inc. UL, UR, cUL, cUR, cULus and cURus are registered certification marks of UL LLC.

WARNING

Pentair products shall be installed and used only as indicated in Pentair's product instruction sheets and training materials. Instruction sheets are available at erico.pentair.com and from your Pentair customer service representative. Improper installation, misuse, misapplication or other failure to completely follow Pentair's instructions and warnings may cause product malfunction, property damage, serious bodily injury and death and/or void your warranty.

© 2017 Pentair All rights reserved

Pentair, CADDY, CADWELD, CRITEC, ERICO, ERIFLEX, ERITECH and LENTON are owned by Pentair or its global affiliates.

All other trademarks are the property of their respective owners. Pentair reserves the right to change specifications without prior notice.