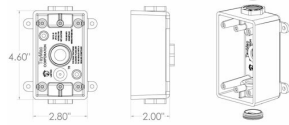




OUTLET BOXES

2 in. Deep with Lugs - Three Threaded Outlets - 4-1/2 in. x 2-3/4 in.
N/A

D30



Catalog #: PSB37550GY

APPLICATIONS

For general use whenever weatherproof protection is required
N/A

PRODUCT FEATURES

Durable high impact PVC construction
Can be used with 1/2 in. or 3/4 in. conduit
Includes 3/4 in. closure plugs and reducer bushings
Includes gasket and mounting hardware
Multi-lingual instructions in each package

UL LISTED

Marine

NEMA

3R Rated

NEC

2014 Compliant

GENERAL PRODUCT INFORMATION

Color: Gray

CONFIGURATION

Number Of Outlets: 3
Gangs: 1

PRODUCT MEASUREMENTS

Depth: 2 in.
Outlet Size: 1/2 in. or 3/4 in.
Cubic Inches (cm3): 16.5 (270.4)
Wt. Ea. (Lbs.): 0.475

PACKAGING

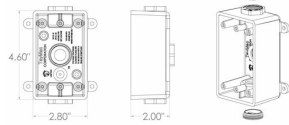
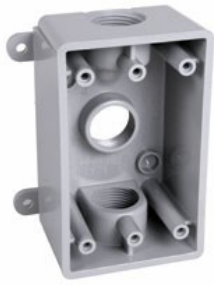
Package Type: Shrink
Std. Pkg.: 8
Product UPC-A Labeled: Yes
Weight (Lbs. Per/C): 47.50
Ship Carton Length (in.): 16.88
Ship Carton Width (in.): 4.13
Ship Carton Height (in.): 5.88
Ctn Weight (Lbs.): 3.80
Pallet Qty: 1056.00
UPC Number: 092326130363
I2of5: 40092326130361



OUTLET BOXES

2 in. Deep with Lugs - Three Threaded Outlets - 4-1/2 in. x 2-3/4 in.
N/A

D30



Catalog #: PSB37550GY

APPLICATIONS

For general use whenever weatherproof protection is required
N/A

PRODUCT FEATURES

Durable high impact PVC construction
Can be used with 1/2 in. or 3/4 in. conduit
Includes 3/4 in. closure plugs and reducer bushings
Includes gasket and mounting hardware
Multi-lingual instructions in each package

UL LISTED

Marine

NEMA

3R Rated

NEC

2014 Compliant

GENERAL PRODUCT INFORMATION

Color: Gray

CONFIGURATION

Number Of Outlets: 3
Gangs: 1

PRODUCT MEASUREMENTS

Depth: 2 in.
Outlet Size: 1/2 in. or 3/4 in.
Cubic Inches (cm3): 16.5 (270.4)
Wt. Ea. (Lbs.): 0.475

PACKAGING

Package Type: Shrink
Std. Pkg.: 8
Product UPC-A Labeled: Yes
Weight (Lbs. Per/C): 47.50
Ship Carton Length (in.): 16.88
Ship Carton Width (in.): 4.13
Ship Carton Height (in.): 5.88
Ctn Weight (Lbs.): 3.80
Pallet Qty: 1056.00
UPC Number: 092326130363
I2of5: 40092326130361