



## Juno® Trac-Lites™ Line Voltage Spotlights

A variety of line voltage spotlights suitable for various applications

**JUNO**®



R711



R712



R714

## Juno® Line Voltage Spotlights PAR16/MR16 GU10

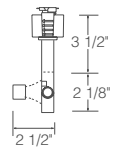
### R711 Open Back Spotlight



120V, 50W max. PAR16/MR16 GU10

Aiming lock helps retain fixture position during relamping.

**Finishes:** White (WH), Black (BL)



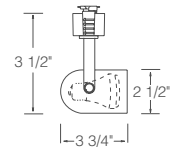
### R712 Round Back Cylinder



120V, 50W max. PAR16/MR16 GU10

With black bezel.

**Finishes:** White (WH), Black (BL)



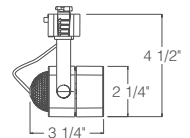
### R714 Cast Cube



120V, 50W max. PAR16/MR16 GU10

Aiming locks help retain fixture position during relamping.

**Finishes:** White (WH), Black (BL),  
Satin Chrome (SC), Painted Bronze (BZ)



All Trac-Lites™ line voltage fixtures feature an on/off switch and are also compatible with Juno Trac-Master® single and two-circuit track systems.



R715



R717



R718

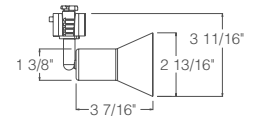
## Juno® Line Voltage Spotlights PAR16/MR16 GU10

### R715 Flare



120V, 50W max. PAR16/MR16 GU10

**Finishes:** White (WH), Black (BL),  
Satin Chrome (SC), Painted Bronze (BZ)

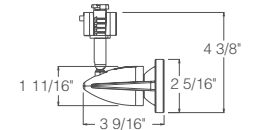


### R717 Odyssey



120V, 50W max. PAR16/MR16 GU10

**Finishes:** White (WH), Satin Chrome (SC),  
Painted Bronze (BZ)



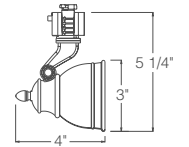
### R718 Bell



120V, 50W max. PAR16/MR16 GU10

Integral baffle and deep lamp regression  
for optimal lamp shielding. Aiming locks  
help retain fixture position during relamping.

**Finishes:** Hand-Rubbed Bronze (BZ)



All Trac-Lites™ line voltage fixtures feature an on/off switch and are also compatible with Juno Trac-Master® single and two-circuit track systems.



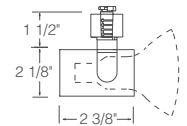
## Juno® Line Voltage Spotlights Universal, Flared Gimbals and Flared Steps

### R541 Universal



75W max. PAR20/PAR30

**Finishes:** White (WH), Black (BL)

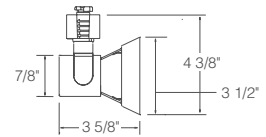


### R531 Flared Gimbal



50W max. PAR20

**Finishes:** White (WH), Black (BL),  
Satin Chrome (SC) with Black yoke  
and adapter

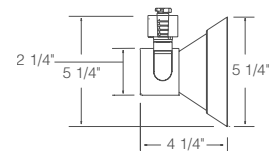


### R532 Flared Gimbal



75W max. PAR30

**Finishes:** White (WH), Black (BL)

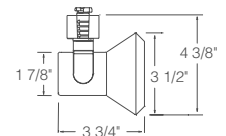


### R551 Flared Step



50W max. PAR20

**Finishes:** White (WH), Black (BL),  
Satin Chrome (SC) with Black yoke  
and adapter, Painted Bronze (BZ)



All Trac-Lites™ line voltage fixtures feature an on/off switch and are also compatible with Juno Trac-Master® single and two-circuit track systems.

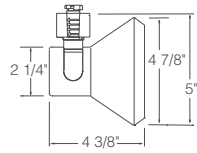


**Juno® Line Voltage Spotlights** Flared Steps

**R552**  
Flared Step



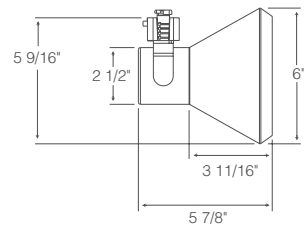
75W max. PAR30  
**Finishes:** White (WH), Black (BL),  
Satin Chrome (SC) with Black yoke  
and adapter, Painted Bronze (BZ)



**R550**  
Flared Step



120W max. PAR38  
**Finishes:** White (WH), Black (BL)



All Trac-Lites™ line voltage fixtures feature an on/off switch and are also compatible with Juno Trac-Master® single and two-circuit track systems.



## Juno® Line Voltage Spotlights Round Back Cylinders and Flat Back Cylinders

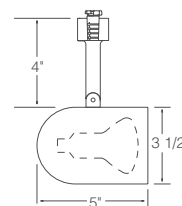
### R500 Round Back Cylinder



50W max. R20/PAR20

Without baffle

**Finishes:** White (WH), Black (BL)



### R501 Round Back Cylinder



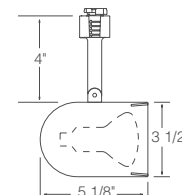
50W max. R20/PAR20

**R501 BLB** – With black baffle

**Finishes:** White (WH), Black (BL),  
Polished Brass (PB)

**R501 WHB** – With white baffle

**Finish:** White (WH)



### R502 Round Back Cylinder



75W max. BR30/PAR30/PAR30L

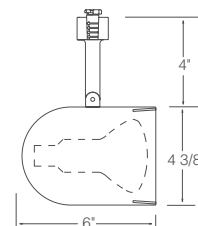
(Short neck PAR30 requires  
T599 Socket Extender).

**R502 BLB** – With black baffle

**Finishes:** White (WH), Black (BL),  
Painted Bronze (BZ)

**R502 WHB** – With white baffle

**Finish:** White (WH)



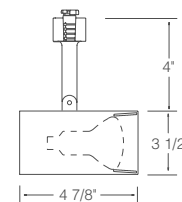
### R521 Flat Back Cylinder



50W max. R20/PAR20

**R521 WHB** – With white baffle

**Finish:** White (WH)



### R522 Flat Back Cylinder

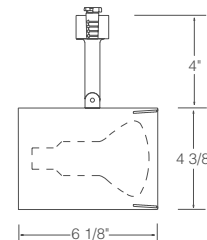


75W max. BR30/PAR30/PAR30L

(Short neck PAR30 requires  
T599 Socket Extender).

**R522 WHB** – With white baffle

**Finish:** White (WH)



All Trac-Lites™ line voltage fixtures feature an on/off switch and are also compatible with Juno Trac-Master® single and two-circuit track systems.



R510



R511



R512



R533



R534

## Juno® Line Voltage Spotlights Step Cylinders and Open Backs

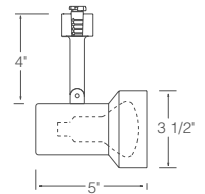
### R510 Step Cylinder



50W max. R20/PAR20

Without baffle

**Finishes:** White (WH), Black (BL)



### R511 Step Cylinder



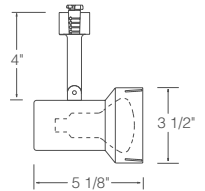
50W max. R20/PAR20

**R511 BLB** – With black baffle

**Finishes:** Black (BL)

**R511 WHB** – With white baffle

**Finish:** White (WH)



### R512 Step Cylinder



75W max. BR30/PAR30/PAR30L

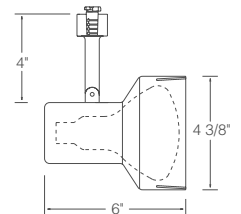
(Short neck PAR30 requires T599 Socket Extender).

**R512 BLB** – With black baffle

**Finishes:** White (WH), Black (BL)

**R512 WHB** – With white baffle

**Finish:** White (WH)

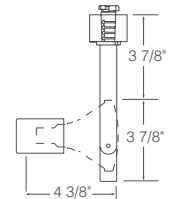


### R533 Open Back Spotlight



75W max. PAR30

**Finishes:** White (WH), Black (BL)

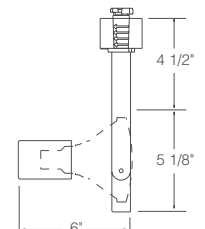


### R534 Open Back Spotlight



120W max. PAR38

**Finishes:** White (WH), Black (BL)



All Trac-Lites™ line voltage fixtures feature an on/off switch and are also compatible with Juno Trac-Master® single and two-circuit track systems.



# Juno<sup>®</sup> Trac-Lites<sup>™</sup>

Juno Trac-Lites bring you all the style, quality and lighting performance Juno is famous for at affordable prices that can be tailored to any budget.

Juno Trac-Lites offer a total system, featuring a wide assortment of low voltage and line voltage track fixtures, decorative pendants, system components and track kits. Track fixtures are available in all the popular classics and in exciting contemporary designs, from metal and glass cones to barn doors, rockets, and cubes.

For added versatility, all Trac-Lites fixtures are compatible with Juno Trac-Master<sup>™</sup> track systems and all Juno Trac-Master fixtures may be used on Trac-Lites track systems.



The perfect blend of form, function and value, Juno Trac-Lites is the system of choice for illuminating many of today's most stylish interiors. No matter what your application, you are sure to find the solutions you need at prices you can afford.

