



ELLIOTT ELECTRIC SUPPLY

We Deliver...Lower Cost, Quality Products, & Personal Service

3804 South Street
75964-7263, TX Nacogdoches
Phone: 936-569-7941
Fax: 936-560-4685



RSP222 Hub W/3 3/4" Holes

Crouse-Hinds

Catalog Number	RSP222
Manufacturer	Crouse-Hinds
Description	
Weight per unit	2.3 (lbs/each)
Product Category	Cast Boxes

Features

Material	Electrogalvanized With Aluminum Acrylic Painted Feraloy Iron Alloy
----------	--------------------------------------------------------------------

Dimensions and Weight

Size	3/4 in
------	--------

Descriptions

Description	HUB W/3 3/4" HOLES
Product Type	3/4 3 Hub Plate 8 1/2 X 4 Sides Of RS/RS
Special Features	For Use With 8-1/2 In X 4 In Sides Of Box

Manufacturer Information

Brand	EATON CROUSE-HINDS SERIES
GTIN	00782274598802
Manufacturers Part Number	RSP222
UPC	782274598802

Taxonomies, Classifications, and Categories

Category Description	HUB STYLE BOXES (GUAB, GUAT, ETC)
Type	Conduit Hub Plate, Three Hub

Packaging

Carton	1
Weight Per each	2.32

Uses, Certifications, and Standards

Application	RS and RMS Series Junction Box
standard	UL 514A, CSA C22.2

Conduit Hub Plates and Gaskets

Applications:

RS, RSM, RSS junction boxes are installed in conduit systems to:

- Act as pull box for conductors
- Provide openings and space for making splices and taps in conductors
- Provide for branch conduit runs
- Provide access to conductors for maintenance and future system changes

Features:

- Junction box bodies accept wide range of hub plates permitting varied hub arrangements and sizes
- Stocking a few components provides for many specific needs
- Future system expansion easily accomplished by substituting hub plates for currently installed plates
- Suitable for use where boxes with integral hubs cannot satisfy requirements
- Suitable for surface mounting outdoors or indoors in rigid conduit runs

Certifications and Complies:

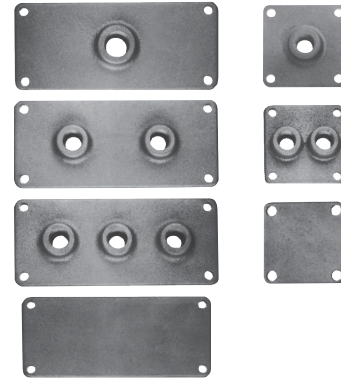
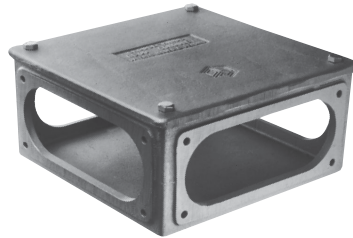
- UL Standard: 514A
- CSA Standard: C22.2 No. 18

Standard Materials:

- Bodies and hub plates – *Feraloy*® iron alloy
- Gaskets – cork

Standard Finishes:

- *Feraloy* iron alloy – electrogalvanized and aluminum acrylic paint



Junction Boxes†

Size	Cat. #
8½ x 8½ x 4	RS1
8½ x 4½ x 4	RSM1
4½ x 4½ x 4	RSS1

Replacement Cover Gaskets

Size	Cat. #
8½ x 8½	GASK61
8½ x 4½	GASK63
4½ x 4½	GASK64

Conduit Hub Plates‡

For 8½ x 4 inch Sides of RS and RSM Boxes

Size	One Hub	Two Hub	Three Hub
	Cat. #	Cat. #	Cat. #
½	RSP1	RSP11	RSP111
¾	RSP2	RSP22	RSP222
1	RSP3	RSP33	RSP333
1¼	RSP4	RSP44	RSP444
1½	RSP5	RSP55	RSP555
2	RSP6	RSP66	
2½	RSP7		
3	RSP8		

For 4½ x 4 inch Sides of RSM and RSS Boxes

Size	One Hub Cat. #	Two Hub Cat. #
½	RSMP1	RSMP11
¾	RSMP2	RSMP22
1	RSMP3	
1¼	RSMP4	
1½	RSMP5	
2	RSMP6	
2½	RSMP7	

Replacement Hub Plate Gaskets

Size	Cat. #	Size	Cat. #
8½ x 4	GASK66	4½ x 4	GASK65

For 8½ x 4 inch Sides of RS and RSM Boxes

Type	Cat. #
Blank Hub Plate	RSPO

For 4½ x 4 inch Sides of RSM and RSS Boxes

Type	Cat. #
Blank Hub Plate	RSMP0

†Includes body, top cover with gasket, 4 gaskets for side plates, and 20 bolts.

‡Hub plates only. Gaskets not included.

For conduit liner ordering information, see page 860.