



# ELLIOTT ELECTRIC SUPPLY

We Deliver...Lower Cost, Quality Products, & Personal Service

3804 South Street  
75964-7263, TX Nacogdoches  
Phone: 936-569-7941  
Fax: 936-560-4685



## S201K25 1P 480V 25A Breaker

*Thomas&Betts-Abb Ins Prod*

Catalog Number	S201K25
Manufacturer	Thomas&Betts-Abb Ins Prod
Description	
Weight per unit	0.0100 (lbs/each)
Product Category	1 Pole Supplementary Protector

### Features

amperage rating	25 W
interrupt rating	6 kA
Poles	1 PH
Trip Type	K
Voltage Rating	480Y/277V AC

### Dimensions and Weight

Height	88 Millimeters
Length	69 Millimeters
Width	17.5 Millimeters

### Descriptions

Description	1P 480V 25A BREAKER
Product Type	MCB 1P K 25A 480Y/277 Supp
Special Features	High performance MCB provides compact supplementary, energy limiting, circuit protection

### Manufacturer Information

Brand	ABB
GTIN	00662019168586
Manufacturers Part Number	S201-K25
UPC	662019168586

### Taxonomies, Classifications, and Categories

Category Description	INDUSTRIAL BREAKERS PARTS AND ACCESSORIES
Type	Miniature circuit breakers

### Packaging

Carton	1
Package	10
Weight Per each	0.01

### Uses, Certifications, and Standards

Application	For use as a supplemental protection device
Frequency Rating	50/60 HZ
Operating Temperature standard	-25 to +55 Degrees Celcius UL mA

# S200-K, 480Y/277 VAC

## Supplemental protectors

### UL 1077, CSA 22.2

# K



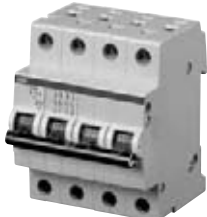
S201-K



S202-K



S203-K



S204-K



S201-KNA



S203-KNA

No. of poles	Rated current	Catalog number	No. of poles	Rated current	Catalog number
1	0.5	S201-K0.5	3	0.5	S203-K0.5
	1	S201-K1		1	S203-K1
	1.6	S201-K1.6		1.6	S203-K1.6
	2	S201-K2		2	S203-K2
	3	S201-K3		3	S203-K3
	4	S201-K4		4	S203-K4
	6	S201-K6		6	S203-K6
	8	S201-K8		8	S203-K8
	10	S201-K10		10	S203-K10
	13	S201-K13		13	S203-K13
	16	S201-K16		16	S203-K16
	20	S201-K20		20	S203-K20
	25	S201-K25		25	S203-K25
	32	S201-K32		32	S203-K32
40	S201-K40	40	S203-K40		
50	S201-K50	50	S203-K50		
63	S201-K63	63	S203-K63		
1 + NA	0.5	S201-K0.5NA	3 + NA	0.5	S203-K0.5NA
	1	S201-K1NA		1	S203-K1NA
	1.6	S201-K1.6NA		1.6	S203-K1.6NA
	2	S201-K2NA		2	S203-K2NA
	3	S201-K3NA		3	S203-K3NA
	4	S201-K4NA		4	S203-K4NA
	6	S201-K6NA		6	S203-K6NA
	8	S201-K8NA		8	S203-K8NA
	10	S201-K10NA		10	S203-K10NA
	13	S201-K13NA		13	S203-K13NA
	16	S201-K16NA		16	S203-K16NA
	20	S201-K20NA		20	S203-K20NA
	25	S201-K25NA		25	S203-K25NA
	32	S201-K32NA		32	S203-K32NA
40	S201-K40NA	40	S203-K40NA		
50	S201-K50NA	50	S203-K50NA		
63	S201-K63NA	63	S203-K63NA		
2	0.5	S202-K0.5	4	0.5	S204-K0.5
	1	S202-K1		1	S204-K1
	1.6	S202-K1.6		1.6	S204-K1.6
	2	S202-K2		2	S204-K2
	3	S202-K3		3	S204-K3
	4	S202-K4		4	S204-K4
	6	S202-K6		6	S204-K6
	8	S202-K8		8	S204-K8
	10	S202-K10		10	S204-K10
	13	S202-K13		13	S204-K13
	16	S202-K16		16	S204-K16
	20	S202-K20		20	S204-K20
	25	S202-K25		25	S204-K25
	32	S202-K32		32	S204-K32
40	S202-K40	40	S204-K40		
50	S202-K50	50	S204-K50		
63	S202-K63	63	S204-K63		

### Tripping characteristic K

UL 1077

480Y/277 VAC

6 kA

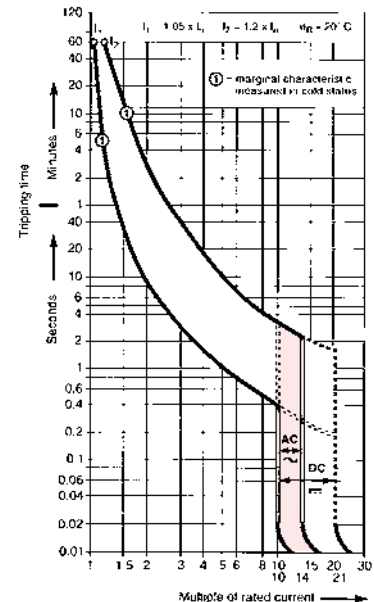
### Inductive loads

- K Curve
- Designed for allowing higher in-rush currents during system start up
- Example: motors, transformers

### Accessories & technical data

Accessories – See page 26

Technical data – See page 76 - 82



Note: This breaker for AC use only

## Technical data

### S200-K, S200P-K, S200P-Z, S280W-K

Item	S200-K		S200P-K		S200P-Z		S280W-K	
Approvals:								
UL	1077		1077		1077		1077	
CSA	C22.2 No. 235		—		—		C22.2 No. 235	
VDE	0660		0660		0660		0660	
IEC	898, 947		898, 947		898, 947		—	
Number of Poles:	1,2,3,4, 1+N, 3+N		1,2,3,4, 1+N, 3+N		1,2,3,4		1,2,3	
Tripping Characteristic:	K		K		Z		K	
Rated Currents:	0.5 to 63A		0.2 to 63A		0.5 to 63A		0.2 to 63A	
Minimum Operating Voltage:	12 V		12 V		12 V		12 V	
UL/CSA Rated Voltage & Interrupting Capacity:	Single pole	Multi pole	Single pole	Multi pole	Single pole	Multi pole		
Frequency:	50/60 Hz		50/60 Hz		50/60 Hz		50/60 Hz	
120VAC	10 kA	—	10 kA	—	10 kA	—	—	
240 VAC	6 kA	10 kA	10 kA	10 kA	10 kA	10 kA	—	
277 VAC	6 kA	—	10 kA	—	10 kA	—	—	
277/480 VAC	—	6 kA	—	10 kA	—	—	10 kA	
60VDC	10 kA	10 kA	—	—	—	—	—	
125VDC	—	10 kA	—	—	—	—	—	
250VDC	—	—	—	—	—	—	—	
500VDC	—	—	—	—	—	—	—	
IEC Rated Voltage	50/60 Hz		50/60 Hz		50/60 Hz		50/60 Hz	
Frequency:	50/60 Hz		50/60 Hz		50/60 Hz		50/60 Hz	
Rated Voltage								
IEC Single Pole	240/415 VAC, 60 VDC		240/415 VAC, 60 VDC		—		—	
IEC Multi-Pole	415 VAC, 110 VDC		415 VAC, 110 VDC		—		—	
Production Category:	IP20		IP20		IP20		IP20	
Depth of Unit Per DIN 43880:	68mm/ 2.68 in.		68mm/ 2.68 in.		68mm/ 2.68 in.		68mm/ 2.68 in.	
Mounting Position:	Vertical / horizontal		Vertical / horizontal		Vertical / horizontal		Vertical / horizontal	
Standard Mounting:	35mm DIN rail		35mm DIN rail		35mm DIN rail		35mm DIN rail	
Main and Shunt Trip Terminals:								
Wire Size	18-4 AWG/.82-21.2 mm <sup>2</sup>		18-4 AWG/.82-21.2 mm <sup>2</sup>		18-4 AWG/.82-21.2 mm <sup>2</sup>		18-4 AWG/.82-21.2 mm <sup>2</sup>	
Torque	17.5 in.-lbs. / 1.978 Nm		17.5 in.-lbs. / 1.978 Nm		17.5 in.-lbs. / 1.978 Nm		17.5 in.-lbs. / 1.978 Nm	
Tool	# 2 Posidrive		# 2 Posidrive		# 2 Posidrive		# 2 Posidrive	
Accessory Terminals								
Wire Size	18-16 AWG/.82-1.3 mm <sup>2</sup>		18-16 AWG/.82-1.3 mm <sup>2</sup>		18-16 AWG/.82-1.3 mm <sup>2</sup>		18-16 AWG/.82-1.3 mm <sup>2</sup>	
Torque	4.5 in.-lbs./ .51 Nm		4.5 in.-lbs./ .51 Nm		4.5 in.-lbs./ .51 Nm		4.5 in.-lbs./ .51 Nm	
Tool	# 1 Posidrive		# 1 Posidrive		# 1 Posidrive		# 1 Posidrive	
Service Life at Rated Load:	No Load 20,000 operations Full Load 10,000 operations		No Load 20,000 operations Full Load 10,000 operations		No Load 20,000 operations Full Load 10,000 operations		No Load 20,000 operations Full Load 10,000 operations	
Ambient Temperatures:								
Minimum	-25°C... -13°F		-25°C... -13°F		-25°C... -13°F		-25°C... -13°F	
Maximum	70°C... 158°F		70°C... 158°F		70°C... 158°F		55°C... 131°F	
Storage Temperatures:								
Minimum	-40°C... -40°F		-40°C... -40°F		-40°C... -40°F		-40°C... -40°F	
Maximum	70°C... 158°F		70°C... 158°F		70°C... 158°F		70°C... 158°F	
Shock Resistance:	30g minimum of 2 impacts, shock duration of 13 ms		30g minimum of 2 impacts, shock duration of 13 ms		30g minimum of 2 impacts, shock duration of 13 ms		30g minimum of 2 impacts, shock duration of 13 ms	
Vibration Resistance:	5g, 20 cycles, 5 Hz, 150 Hz		5g, 20 cycles, 5 Hz, 150 Hz		5g, 20 cycles, 5 Hz, 150 Hz		5g, 20 cycles, 5 Hz, 150 Hz	
Disconnecting Neutral Rating:	6 kA switching		—		—		—	