



# ELLIOTT ELECTRIC SUPPLY

We Deliver...Lower Cost, Quality Products, & Personal Service

3804 South Street  
75964-7263, TX Nacogdoches  
Phone: 936-569-7941  
Fax: 936-560-4685



## S203K32 3P 480V 32A Breaker

*Thomas&Betts-Abb Ins Prod*

|                  |                                |
|------------------|--------------------------------|
| Catalog Number   | S203K32                        |
| Manufacturer     | Thomas&Betts-Abb Ins Prod      |
| Description      |                                |
| Weight per unit  | 0.9500 (lbs/each)              |
| Product Category | 3 Pole Supplementary Protector |

### Features

|                  |              |
|------------------|--------------|
| amperage rating  | 32 W         |
| interrupt rating | 6 kA         |
| Poles            | 3 WTT        |
| Trip Type        | K            |
| Voltage Rating   | 277/Y480 VAC |

### Dimensions and Weight

|        |                |
|--------|----------------|
| Height | 88mm           |
| Length | 69 Millimeters |
| Width  | 52.5mm         |

### Descriptions

|                  |  |
|------------------|--|
| Description      | 3P 480V 32A BREAKER  |
| Product Type     | MCB 3P K 32A 480Y/277 Supp   |
| Special Features | High performance MCB provides compact supplementary, energy limiting, circuit protection |

### Manufacturer Information

|                           |                |
|---------------------------|----------------|
| Brand                     | ABB            |
| GTIN                      | 00662019171678 |
| Manufacturers Part Number | S203-K32       |
| UPC                       | 662019171678   |

### Taxonomies, Classifications, and Categories

|                      |  |
|----------------------|--|
| Category Description | INDUSTRIAL BREAKERS PARTS AND ACCESSORIES  |
| Type                 | High Performance MCB Provides Compact Supplementary, Energy Limiting, Circuit Protection |

### Packaging

|                 |      |
|-----------------|------|
| Carton          | 1    |
| Weight Per each | 0.95 |

### Uses, Certifications, and Standards

|                                |  |
|--------------------------------|--|
| Application                    | For use as a supplemental protection device                        |
| Frequency Rating               | 50/60 HZ   |
| Operating Temperature standard | -25 to +55 Degrees Celcius<br>UL 1077, CSA 22.2 No. 235, IEC 60898 |

# S200-K, 480Y/277 VAC

## Supplemental protectors

### UL 1077, CSA 22.2

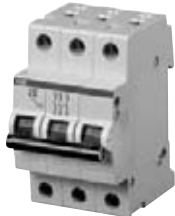
# K



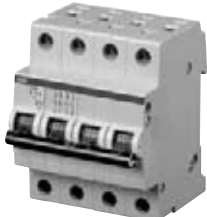
S201-K



S202-K



S203-K



S204-K



S201-KNA



S203-KNA

| No. of poles | Rated current | Catalog number | No. of poles | Rated current | Catalog number |
|--------------|---------------|----------------|--------------|---------------|----------------|
| 1            | 0.5           | S201-K0.5      | 3            | 0.5           | S203-K0.5      |
|              | 1             | S201-K1        |              | 1             | S203-K1        |
|              | 1.6           | S201-K1.6      |              | 1.6           | S203-K1.6      |
|              | 2             | S201-K2        |              | 2             | S203-K2        |
|              | 3             | S201-K3        |              | 3             | S203-K3        |
|              | 4             | S201-K4        |              | 4             | S203-K4        |
|              | 6             | S201-K6        |              | 6             | S203-K6        |
|              | 8             | S201-K8        |              | 8             | S203-K8        |
|              | 10            | S201-K10       |              | 10            | S203-K10       |
|              | 13            | S201-K13       |              | 13            | S203-K13       |
|              | 16            | S201-K16       |              | 16            | S203-K16       |
|              | 20            | S201-K20       |              | 20            | S203-K20       |
|              | 25            | S201-K25       |              | 25            | S203-K25       |
|              | 32            | S201-K32       |              | 32            | S203-K32       |
| 40           | S201-K40      | 40             | S203-K40     |               |                |
| 50           | S201-K50      | 50             | S203-K50     |               |                |
| 63           | S201-K63      | 63             | S203-K63     |               |                |
| 1 + NA       | 0.5           | S201-K0.5NA    | 3 + NA       | 0.5           | S203-K0.5NA    |
|              | 1             | S201-K1NA      |              | 1             | S203-K1NA      |
|              | 1.6           | S201-K1.6NA    |              | 1.6           | S203-K1.6NA    |
|              | 2             | S201-K2NA      |              | 2             | S203-K2NA      |
|              | 3             | S201-K3NA      |              | 3             | S203-K3NA      |
|              | 4             | S201-K4NA      |              | 4             | S203-K4NA      |
|              | 6             | S201-K6NA      |              | 6             | S203-K6NA      |
|              | 8             | S201-K8NA      |              | 8             | S203-K8NA      |
|              | 10            | S201-K10NA     |              | 10            | S203-K10NA     |
|              | 13            | S201-K13NA     |              | 13            | S203-K13NA     |
|              | 16            | S201-K16NA     |              | 16            | S203-K16NA     |
|              | 20            | S201-K20NA     |              | 20            | S203-K20NA     |
|              | 25            | S201-K25NA     |              | 25            | S203-K25NA     |
|              | 32            | S201-K32NA     |              | 32            | S203-K32NA     |
| 40           | S201-K40NA    | 40             | S203-K40NA   |               |                |
| 50           | S201-K50NA    | 50             | S203-K50NA   |               |                |
| 63           | S201-K63NA    | 63             | S203-K63NA   |               |                |
| 2            | 0.5           | S202-K0.5      | 4            | 0.5           | S204-K0.5      |
|              | 1             | S202-K1        |              | 1             | S204-K1        |
|              | 1.6           | S202-K1.6      |              | 1.6           | S204-K1.6      |
|              | 2             | S202-K2        |              | 2             | S204-K2        |
|              | 3             | S202-K3        |              | 3             | S204-K3        |
|              | 4             | S202-K4        |              | 4             | S204-K4        |
|              | 6             | S202-K6        |              | 6             | S204-K6        |
|              | 8             | S202-K8        |              | 8             | S204-K8        |
|              | 10            | S202-K10       |              | 10            | S204-K10       |
|              | 13            | S202-K13       |              | 13            | S204-K13       |
|              | 16            | S202-K16       |              | 16            | S204-K16       |
|              | 20            | S202-K20       |              | 20            | S204-K20       |
|              | 25            | S202-K25       |              | 25            | S204-K25       |
|              | 32            | S202-K32       |              | 32            | S204-K32       |
| 40           | S202-K40      | 40             | S204-K40     |               |                |
| 50           | S202-K50      | 50             | S204-K50     |               |                |
| 63           | S202-K63      | 63             | S204-K63     |               |                |

### Tripping characteristic K

UL 1077

480Y/277 VAC

6 kA

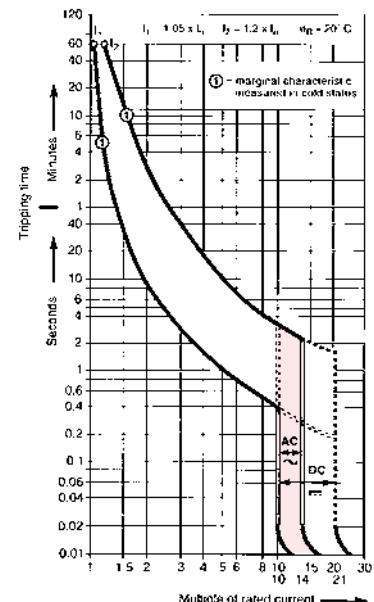
### Inductive loads

- K Curve
- Designed for allowing higher in-rush currents during system start up
- Example: motors, transformers

### Accessories & technical data

Accessories – See page 26

Technical data – See page 76 - 82



Note: This breaker for AC use only

## Technical data

### S200-K, S200P-K, S200P-Z, S280W-K

| Item  | S200-K                         |   | S200P-K   |   | S200P-Z   |   | S280W-K   |       |
|---|--------------------------------|---|---|---|---|---|---|-------|
| Approvals:                                    | 1077                           |   | 1077  |   | 1077  |   | 1077  |       |
| UL  | C22.2 No. 235                  |   | —   |   | —   |   | C22.2 No. 235                                     |       |
| CSA   | 0660                           |   | 0660  |   | 0660  |   | 0660  |       |
| VDE   | 898, 947                       |   | 898, 947  |   | 898, 947  |   | —   |       |
| IEC   | 1,2,3,4, 1+N, 3+N              |   | 1,2,3,4, 1+N, 3+N                                 |   | 1,2,3,4   |   | 1,2,3   |       |
| Number of Poles:                              | K                              |   | K   |   | Z   |   | K   |       |
| Tripping Characteristic:                      | 0.5 to 63A                     |   | 0.2 to 63A  |   | 0.5 to 63A  |   | 0.2 to 63A  |       |
| Rated Currents:                               | 12 V                           |   | 12 V  |   | 12 V  |   | 12 V  |       |
| Minimum Operating Voltage:                    | Single pole Multi pole         |   | Single pole Multi pole                            |   | Single pole Multi pole                            |   |   |       |
| UL/CSA Rated Voltage & Interrupting Capacity: | 50/60 Hz                       |   | 50/60 Hz  |   | 50/60 Hz  |   | 50/60 Hz  |       |
| Frequency:                                    | 10 kA —                        | 10 kA —   | 10 kA —   | 10 kA —   | 10 kA —   | 10 kA —   | —   | —     |
| 120VAC  | 6 kA 10 kA                     | 10 kA 10 kA                                       | 10 kA 10 kA                                       | 10 kA 10 kA                                       | 10 kA 10 kA                                       | 10 kA 10 kA                                       | —   | —     |
| 240 VAC                                       | 6 kA —                         | 10 kA —   | 10 kA —   | 10 kA —   | 10 kA —   | 10 kA —   | —   | —     |
| 277 VAC                                       | — 6 kA                         | — 10 kA   | — 10 kA   | — 10 kA   | — 10 kA   | — 10 kA   | —   | 10 kA |
| 277/480 VAC                                   | 10 kA 10 kA                    | — —   | — —   | — —   | — —   | — —   | —   | —     |
| 60VDC   | — 10 kA                        | — 10 kA   | — —   | — —   | — —   | — —   | —   | —     |
| 125VDC  | — —                            | — —   | — —   | — —   | — —   | — —   | —   | —     |
| 250VDC  | — —                            | — —   | — —   | — —   | — —   | — —   | —   | —     |
| 500VDC  | — —                            | — —   | — —   | — —   | — —   | — —   | —   | —     |
| IEC Rated Voltage                             | 50/60 Hz                       |   | 50/60 Hz  |   | 50/60 Hz  |   | 50/60 Hz  |       |
| Frequency:                                    | 240/415 VAC, 60 VDC            |   | 240/415 VAC, 60 VDC                               |   | —   |   | —   |       |
| Rated Voltage                                 | 415 VAC, 110 VDC               |   | 415 VAC, 110 VDC                                  |   | —   |   | —   |       |
| IEC Single Pole                               | IP20                           |   | IP20  |   | IP20  |   | IP20  |       |
| IEC Multi-Pole                                | 68mm/ 2.68 in.                 |   | 68mm/ 2.68 in.                                    |   | 68mm/ 2.68 in.                                    |   | 68mm/ 2.68 in.                                    |       |
| Production Category:                          | Vertical / horizontal          |   | Vertical / horizontal                             |   | Vertical / horizontal                             |   | Vertical / horizontal                             |       |
| Depth of Unit Per DIN 43880:                  | 35mm DIN rail                  |   | 35mm DIN rail                                     |   | 35mm DIN rail                                     |   | 35mm DIN rail                                     |       |
| Mounting Position:                            | Main and Shunt Trip Terminals: |   | Main and Shunt Trip Terminals:                    |   | Main and Shunt Trip Terminals:                    |   | Main and Shunt Trip Terminals:                    |       |
| Standard Mounting:                            | Wire Size                      | 18-4 AWG/.82-21.2 mm <sup>2</sup>                 | 18-4 AWG/.82-21.2 mm <sup>2</sup>                 | 18-4 AWG/.82-21.2 mm <sup>2</sup>                 | 18-4 AWG/.82-21.2 mm <sup>2</sup>                 | 18-4 AWG/.82-21.2 mm <sup>2</sup>                 | 18-4 AWG/.82-21.2 mm <sup>2</sup>                 |       |
|   | Torque                         | 17.5 in.-lbs. / 1.978 Nm                          | 17.5 in.-lbs. / 1.978 Nm                          | 17.5 in.-lbs. / 1.978 Nm                          | 17.5 in.-lbs. / 1.978 Nm                          | 17.5 in.-lbs. / 1.978 Nm                          | 17.5 in.-lbs. / 1.978 Nm                          |       |
|   | Tool                           | # 2 Posidrive                                     | # 2 Posidrive                                     | # 2 Posidrive                                     | # 2 Posidrive                                     | # 2 Posidrive                                     | # 2 Posidrive                                     |       |
|   | Accessory Terminals            | Wire Size   | 18-16 AWG/.82-1.3 mm <sup>2</sup>                 | 18-16 AWG/.82-1.3 mm <sup>2</sup>                 | 18-16 AWG/.82-1.3 mm <sup>2</sup>                 | 18-16 AWG/.82-1.3 mm <sup>2</sup>                 | 18-16 AWG/.82-1.3 mm <sup>2</sup>                 |       |
|   |                                | Torque  | 4.5 in.-lbs./ .51 Nm                              | 4.5 in.-lbs./ .51 Nm                              | 4.5 in.-lbs./ .51 Nm                              | 4.5 in.-lbs./ .51 Nm                              | 4.5 in.-lbs./ .51 Nm                              |       |
|   |                                | Tool  | # 1 Posidrive                                     | # 1 Posidrive                                     | # 1 Posidrive                                     | # 1 Posidrive                                     | # 1 Posidrive                                     |       |
|   | Service Life at Rated Load:    | No Load 20,000 operations                         | No Load 20,000 operations                         | No Load 20,000 operations                         | No Load 20,000 operations                         | No Load 20,000 operations                         | No Load 20,000 operations                         |       |
|   |                                | Full Load 10,000 operations                       | Full Load 10,000 operations                       | Full Load 10,000 operations                       | Full Load 10,000 operations                       | Full Load 10,000 operations                       | Full Load 10,000 operations                       |       |
|   | Ambient Temperatures:          | Minimum   | -25°C... -13°F                                    | -25°C... -13°F                                    | -25°C... -13°F                                    | -25°C... -13°F                                    | -25°C... -13°F                                    |       |
|   |                                | Maximum   | 70°C... 158°F                                     | 70°C... 158°F                                     | 70°C... 158°F                                     | 70°C... 158°F                                     | 55°C... 131°F                                     |       |
|   | Storage Temperatures:          | Minimum   | -40°C... -40°F                                    | -40°C... -40°F                                    | -40°C... -40°F                                    | -40°C... -40°F                                    | -40°C... -40°F                                    |       |
|   |                                | Maximum   | 70°C... 158°F                                     | 70°C... 158°F                                     | 70°C... 158°F                                     | 70°C... 158°F                                     | 70°C... 158°F                                     |       |
|   | Shock Resistance:              | 30g minimum of 2 impacts, shock duration of 13 ms | 30g minimum of 2 impacts, shock duration of 13 ms | 30g minimum of 2 impacts, shock duration of 13 ms | 30g minimum of 2 impacts, shock duration of 13 ms | 30g minimum of 2 impacts, shock duration of 13 ms | 30g minimum of 2 impacts, shock duration of 13 ms |       |
|   | Vibration Resistance:          | 5g, 20 cycles, 5 Hz, 150 Hz                       | 5g, 20 cycles, 5 Hz, 150 Hz                       | 5g, 20 cycles, 5 Hz, 150 Hz                       | 5g, 20 cycles, 5 Hz, 150 Hz                       | 5g, 20 cycles, 5 Hz, 150 Hz                       | 5g, 20 cycles, 5 Hz, 150 Hz                       |       |
|   | Disconnecting Neutral Rating:  | 6 kA switching                                    | —   | —   | —   | —   | —   |       |