

Calbrite™

Stainless Steel Conduit Systems

Stainless Steel Couplings

Features:

- Manufactured in type 304 and 316 stainless steel to meet any stringent sanitary condition
- Polished with standard "brite" finish to increase corrosion resistance and aesthetic appearance
- Included with each length of stainless threaded conduit
- Straight threads—NPS
- No package qty. required



Certifications and Compliances:

UL / cUL 6A Listed

UL file number – E230584

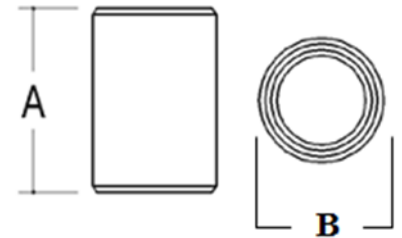
Manufactured in accordance with CSA C22.1, Canadian Electrical Code, Part 1, NOM-001-SEDE, Standard for Electrical Installations, Inclusive for installation in accordance with Article 344 of ANSI/NFPA 70, "National Electrical Code" (NEC)
Manufactured in the USA

Applications:

Designed for use with stainless steel rigid conduit, and to connect threaded stainless conduit, nipples, and other threaded fittings.

Industries Commonly Served:

- Food & Beverage Production & Distribution
- Chemical Plants
- Water & Wastewater Treatment
- Pharmaceuticals & Cosmetics
- Refining & Extraction Sites
- Petrochemical
- Pulp & Paper Mills
- Marine & Coastal Facilities
- Along with other corrosive environments



Size	Part Number	A	B	I.D.	Wall Thickness	Weight (ea) per lb.
1/2"	S60500CP00	1.640"	1.035"	0.840"	.110"	0.13
3/4"	S60700CP00	1.645"	1.260"	1.050"	.140"	0.20
1"	S61000CP00	2.000"	1.550"	1.315"	.160"	0.34
1-1/4"	S61200CP00	2.050"	1.880"	1.660"	.160"	0.38
1-1/2"	S61500CP00	2.085"	2.200"	1.900"	.200"	0.65
2"	S62000CP00	2.165"	2.740"	2.375"	.200"	0.90
2-1/2"	S62500CP00	3.210"	3.330"	2.875"	.250"	2.10
3"	S63000CP00	3.315"	3.800"	3.500"	.250"	2.20
4"	S64000CP00	3.540"	4.890"	4.500"	.250"	3.19
5"	S65000CP00	3.970"	6.340"	5.563"	.440"	8.66
6"	S66000CP00	4.270"	7.340"	6.625"	.440"	10.00

All dimensions are for informational purposes only *Tolerances +/- 5%

Calbrite ♦ 6451 Northwind Pkwy. Hobart, IN 46342 ♦ Ph: 219-844-6800 ♦ www.calbrite.com

Calbrite™

Stainless Steel Conduit Systems

Stainless Steel Couplings

Features:

- Manufactured in type 304 and 316 stainless steel to meet any stringent sanitary condition
- Polished with standard "brite" finish to increase corrosion resistance and aesthetic appearance
- Included with each length of stainless threaded conduit
- Straight threads—NPS
- No package qty. required



Certifications and Compliances:

UL / cUL 6A Listed

UL file number – E230584

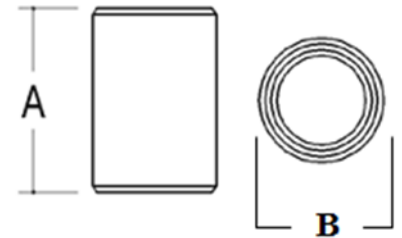
Manufactured in accordance with CSA C22.1, Canadian Electrical Code, Part 1, NOM-001-SEDE, Standard for Electrical Installations, Inclusive for installation in accordance with Article 344 of ANSI/NFPA 70, "National Electrical Code" (NEC)
Manufactured in the USA

Applications:

Designed for use with stainless steel rigid conduit, and to connect threaded stainless conduit, nipples, and other threaded fittings.

Industries Commonly Served:

- Food & Beverage Production & Distribution
- Chemical Plants
- Water & Wastewater Treatment
- Pharmaceuticals & Cosmetics
- Refining & Extraction Sites
- Petrochemical
- Pulp & Paper Mills
- Marine & Coastal Facilities
- Along with other corrosive environments



Size	Part Number	A	B	I.D.	Wall Thickness	Weight (ea) per lb.
1/2"	S60500CP00	1.640"	1.035"	0.840"	.110"	0.13
3/4"	S60700CP00	1.645"	1.260"	1.050"	.140"	0.20
1"	S61000CP00	2.000"	1.550"	1.315"	.160"	0.34
1-1/4"	S61200CP00	2.050"	1.880"	1.660"	.160"	0.38
1-1/2"	S61500CP00	2.085"	2.200"	1.900"	.200"	0.65
2"	S62000CP00	2.165"	2.740"	2.375"	.200"	0.90
2-1/2"	S62500CP00	3.210"	3.330"	2.875"	.250"	2.10
3"	S63000CP00	3.315"	3.800"	3.500"	.250"	2.20
4"	S64000CP00	3.540"	4.890"	4.500"	.250"	3.19
5"	S65000CP00	3.970"	6.340"	5.563"	.440"	8.66
6"	S66000CP00	4.270"	7.340"	6.625"	.440"	10.00

*All dimensions are for informational purposes only *Tolerances +/- 5%*

Calbrite ♦ 6451 Northwind Pkwy. Hobart, IN 46342 ♦ Ph: 219-844-6800 ♦ www.calbrite.com