

Stainless Steel T Conduit Body

Features:

- Manufactured in type 316 stainless steel to meet any stringent sanitary condition
- Polished with standard "brite" finish to increase corrosion resistance and aesthetic appearance
- Solid stainless construction permits easy installation using ordinary hand tools
- The flat back design allows extra wiring capacity
- No package qty. required
- Cover and Gasket set included
- Form 8 Style



Certifications and Compliances:

UL / cUL 514A Listed

UL file number – E307133

The products covered by this standard are intended for installation in accordance with the National Electrical Code (NEC), NFPA 70, the Canadian Electrical Code (CEC), Part I, and the Standard for Electrical Installations, NOM-001-SEDE.

Material:

Material: Body - 316SS

Gasket - Neoprene

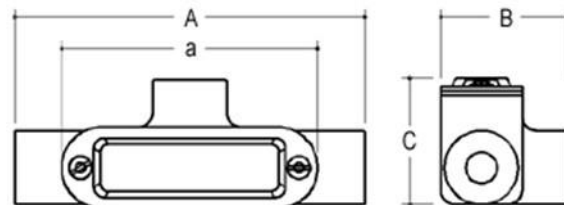
Cover and Screws: 316SS

Applications:

To connect and change direction of conduit runs. Can be used as pulling fittings. Accessible wiring chamber provides a spacious location to make splices

Industries Commonly Served:

- Food & Beverage Production & Distribution
- Chemical Plants
- Water & Wastewater Treatment
- Pharmaceuticals & Cosmetics
- Refining & Extraction Sites
- Petrochemical Operations
- Marine & Coastal Facilities
- Pulp and Paper Mills
- Along with other corrosive environments



Size	Part Number	A	B	C	a	Cubic Inches	Weight (ea) per lb.
1/2"	S60500TE00	5.940"	2.132"	2.030"	4.320"	5"	1.28
3/4"	S60700TE00	6.538"	2.474"	2.320"	4.940"	9"	1.89
1"	S61000TE00	7.690"	2.830"	2.330"	5.650"	13"	2.50
1-1/4"	S61200TE00	8.520"	3.190"	2.900"	6.530"	24"	3.50
1-1/2"	S61500TE00	9.923"	3.585"	3.000"	7.810"	35"	5.00
2"	S62000TE00	12.30"	4.700"	3.880"	10.00"	77"	9.82
2-1/2"	S62500TE00	15.29"	6.200"	4.550"	12.00"	160"	14.32
3"	S63000TE00	15.33"	6.280"	4.520"	12.00"	177"	15.00
4"	S64000TE00	18.34"	7.610"	5.930"	14.63"	382"	30.00

*All dimensions are for informational purposes only *Tolerances +/- 5%*

Stainless Steel T Conduit Body

Features:

- Manufactured in type 316 stainless steel to meet any stringent sanitary condition
- Polished with standard "brite" finish to increase corrosion resistance and aesthetic appearance
- Solid stainless construction permits easy installation using ordinary hand tools
- The flat back design allows extra wiring capacity
- No package qty. required
- Cover and Gasket set included
- Form 8 Style



Certifications and Compliances:

UL / cUL 514A Listed

UL file number – E307133

The products covered by this standard are intended for installation in accordance with the National Electrical Code (NEC), NFPA 70, the Canadian Electrical Code (CEC), Part I, and the Standard for Electrical Installations, NOM-001-SEDE.

Material:

Material: Body - 316SS

Gasket - Neoprene

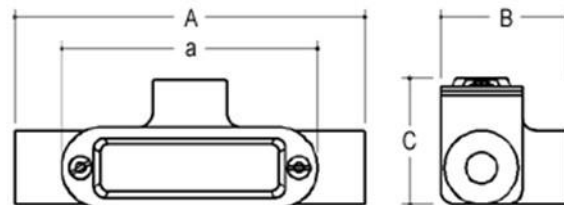
Cover and Screws: 316SS

Applications:

To connect and change direction of conduit runs. Can be used as pulling fittings. Accessible wiring chamber provides a spacious location to make splices

Industries Commonly Served:

- Food & Beverage Production & Distribution
- Chemical Plants
- Water & Wastewater Treatment
- Pharmaceuticals & Cosmetics
- Refining & Extraction Sites
- Petrochemical Operations
- Marine & Coastal Facilities
- Pulp and Paper Mills
- Along with other corrosive environments



Size	Part Number	A	B	C	a	Cubic Inches	Weight (ea) per lb.
1/2"	S60500TE00	5.940"	2.132"	2.030"	4.320"	5"	1.28
3/4"	S60700TE00	6.538"	2.474"	2.320"	4.940"	9"	1.89
1"	S61000TE00	7.690"	2.830"	2.330"	5.650"	13"	2.50
1-1/4"	S61200TE00	8.520"	3.190"	2.900"	6.530"	24"	3.50
1-1/2"	S61500TE00	9.923"	3.585"	3.000"	7.810"	35"	5.00
2"	S62000TE00	12.30"	4.700"	3.880"	10.00"	77"	9.82
2-1/2"	S62500TE00	15.29"	6.200"	4.550"	12.00"	160"	14.32
3"	S63000TE00	15.33"	6.280"	4.520"	12.00"	177"	15.00
4"	S64000TE00	18.34"	7.610"	5.930"	14.63"	382"	30.00

*All dimensions are for informational purposes only *Tolerances +/- 5%*