

FEATURES & SPECIFICATIONS

INTENDED USE — SBL LED wraparound provides a digital lighting platform to deliver general ambient lighting for surface-mount applications. The SBL provides a similar look to that of an existing fluorescent wrap with all of the excellent benefits of LED: energy savings, long life, and maintenance savings. Ideal for closets, storage rooms, and offices.

CONSTRUCTION — Linear side prisms control brightness, pyramidal bottom prisms minimize lamp image. Continuous side flanges on fixture body provide light trap and continuous diffuser support to prevent accidental opening and simplify maintenance. Full depth, white enamel end plates.

Die-formed from code gauge cold-rolled steel. Channel cover snaps into place without the use of tools. Full end cap factory installed to reduce job site labor.

OPTICS — The translucent white diffuser reduces glare and pixilation without impacting performance.

ELECTRICAL — Long-life LEDs, coupled with high-efficiency drivers, provide superior quantity and quality of illumination for extended service life. 90% LED lumen maintenance at 50,000 hours (L90/50,000). The LEDs have a CRI of 82.

eldoLED driver options deliver choice of dimming range and choices for control, while assuring flicker-free, low-current inrush, 89% efficiency and low EMI.

Pair the SBL with the fixture mount Sensor Switch LSXR sensor for additional energy savings when the space is unoccupied. The LSXRHL sensor dims the fixture down to a low-level setting when there is no occupancy. This option is ideal for stairwells, back rooms, and closets due to the low occupancy level in those spaces.

Optional nLight® embedded controls continuously monitor system performance, allow for constant lumen management / compensation function, facilitate simple "plug-and-play" network and controls upgrading via Cat-5 cable. Ballast disconnect provided where required to comply with US and Canadian codes.

LISTINGS — CSA certified to meet U.S. and Canadian standards.

Damp listed.

WARRANTY — 5-year limited warranty. Complete warranty terms located at www.acuitybrands.com/CustomerResources/Terms_and_conditions.aspx

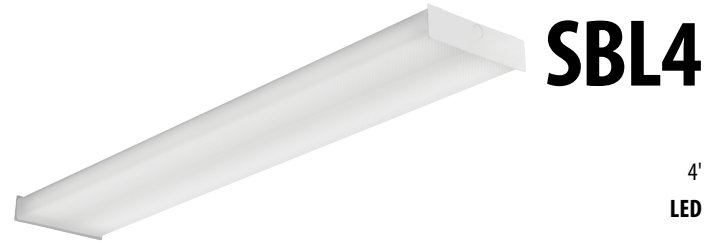
Note: Actual performance may differ as a result of end-user environment and application.

All values are design or typical values, measured under laboratory conditions at 25 °C.

Specifications subject to change without notice.

Catalog Number
Notes
Type

Square-basket LED Wraparound



CSA+ Capable Luminaire

This item is an A+ capable luminaire, which has been designed and tested to provide consistent color appearance and out-of-the-box control compatibility with simple commissioning.

- All configurations of this luminaire meet the Acuity Brands' specification for chromatic consistency
- This luminaire is part of an A+ Certified solution for nLight® control networks when ordered with drivers marked by a shaded background*
- This luminaire is part of an A+ Certified solution for nLight control networks, providing advanced control functionality at the luminaire level, when selection includes driver and control options marked by a shaded background*

To learn more about A+, visit www.acuitybrands.com/aplus.

*See ordering tree for details

SBL4 LED Wraparound



A+ Capable options indicated by this color background.

ORDERING INFORMATION

Lead times will vary depending on options selected. Consult with your sales representative.

Example: SBL4 4000LM 80CRI 35K MIN10 GZT MVOLT

SBL4															
Series		Lumens ¹		CRI		Color temperature		Minimum Dimming Level		Control		Voltage			
SBL4	4' LED wrap	3000LM	3000 lumens	80CRI	80 CRI	30K	3000 K	MIN10	Dims to 10% ²	GZT	Generic 0-10V Dimming	MVOLT	120-277V		
		4000LM	4000 lumens			35K	3500 K	MIN1	Dims to 1% ³					347	347V ⁵
		4800LM	4800 lumens			40K	4000 K	NODIM	On/off, non-dimming ⁴	ZT	eldoLED 0-10V Dimming				
		6000LM	6000 lumens			50K	5000 K	SLD	Step-level dimming ⁴						
		7200LM	7200 lumens												

Emergency Options		Lumen Management		Occupancy Control		Occupancy Sensor Technology		Options	
EL7L	700 nominal lumen battery pack (non-CEC compliant) ⁶	(blank)	None	LSXRHL	Sensor Switch® fixture mount sensor with High/Low occupancy operation ^{8,9}	PIR	Passive Infrared	USPOM	US Point of Manufacture
EL14L	1400 nominal lumen battery pack (non-CEC compliant) ⁶	CL80	Constant lumen output, 80%	LSXR10	Sensor Switch® fixture mount sensor with on/off occupancy operation ⁸				
E10WLCP	EM Self-Diagnostic battery pack, 10W Constant Power, CEC compliant ⁶								
EMG	for use with nLight on generator supply EM power ⁷								

ORDERING INFORMATION

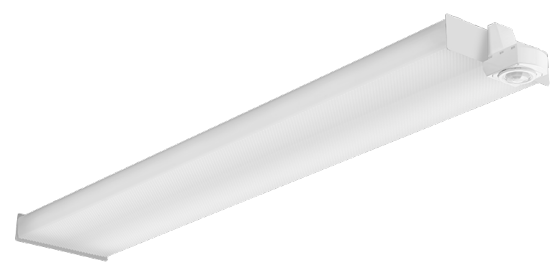
Catalog number	UPC	Description	Lumens	Color temperature	Voltage	Wattage	Pallet qty	Standard carton qty.
SBL4 347 LP835	190887855692	4' LED Wraparound	3,933	3500 K	347	32	70	1
SBL4 347 LP840	190887856675	4' LED Wraparound	3,994	4000 K	347	32	70	1

Notes

- 1 Approximate lumen output.
- 2 Requires GZT control option.
- 3 Requires GZT, ZT, or NLIGHT control.
- 4 Not available with Control or Sensor Options.
- 5 Not available with SLD option.
- 6 Not available with 7200LM option.
- 7 nLight EMG option requires a connection to existing nLight network. Power is provided from a separate N80 or N100 enabled fixture. Requires NLIGHT.
- 8 Requires MIN1, ZT and PIR options.
- 9 Dims to approximately 10% light output when unoccupied.

SBL4 LED Wraparound

Performance Data			
Lumen Package	Lumens	Input Watts	LPW
3000LM 80CRI 30K	3165	25.5	124
3000LM 80CRI 35K	3236	25.5	127
3000LM 80CRI 40K	3286	25.5	129
3000LM 80CRI 50K	3407	25.5	133
4000LM 80CRI 30K	3847	32.4	119
4000LM 80CRI 35K	3933	32.4	121
4000LM 80CRI 40K	3994	32.4	123
4000LM 80CRI 50K	4141	32.4	128
4800LM 80CRI 30K	4698	40.5	116
4800LM 80CRI 35K	4802	40.5	119
4800LM 80CRI 40K	4877	40.5	120
4800LM 80CRI 50K	5057	40.5	125
6000LM 80CRI 30K	5985	49.9	120
6000LM 80CRI 35K	6119	49.9	123
6000LM 80CRI 40K	6214	49.9	125
6000LM 80CRI 50K	6443	49.9	129
7200LM 80CRI 30K	7052	61.9	114
7200LM 80CRI 35K	7209	61.9	117
7200LM 80CRI 40K	7321	61.9	118
7200LM 80CRI 50K	7591	61.9	123

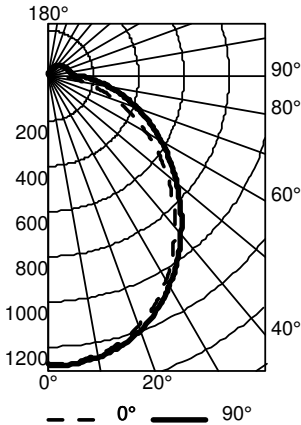


Sensor Switch LSXRHL Sensor	
Lens type:	10 - Low Mount 360° coverage
Dimming:	HL - High/Low Occupancy operation
Min Dim Level:	3V - approximately 10% light output when unoccupied
Time Delay:	5M - 5 minutes

How to Estimate Delivered Lumens in Emergency Mode
Use the formula below to estimate the delivered lumens in emergency mode.
Delivered Lumens = 1.25 x P x LPW
P = Output power of emergency driver. P = 10W for E10WLCP option.
LPW = Lumen per watt rating of the luminaire. LPW information available in Performance Data section.

PHOTOMETRICS

SBL4 4000LM 80CRI 35K



CP Summary		Coefficients of Utilization												Zonal Lumen Summary			
		pc	80%			20%			50%								
		0°	90	pw	70%	50%	30%	70%	50%	30%	10%	50%	30%	10%	Zone	Lumens	% Lamp
0°	1279	1279	0	117	117	117	114	114	114	107	107	107	0° - 30°	979	24.9	24.9	
5°	1275	1281	1	106	101	96	98	94	90	92	89	86	0° - 40°	1583	40.2	40.2	
15°	1224	1240	2	96	88	80	85	78	73	80	75	70	0° - 60°	2748	69.9	69.9	
25°	1118	1139	3	88	77	68	75	67	61	71	64	59	0° - 90°	3660	93.1	93.1	
35°	962	997	4	80	68	59	66	58	51	63	56	50	90° - 120°	182	4.6	4.6	
45°	780	829	5	74	61	51	59	51	44	56	49	43	90° - 130°	221	5.6	5.6	
55°	596	657	6	68	55	46	53	45	39	51	43	38	90° - 150°	263	6.7	6.7	
65°	414	497	7	63	49	41	48	40	34	46	39	33	90° - 180°	273	6.9	6.9	
75°	242	344	8	59	45	37	44	36	30	42	35	30	0° - 180°	3933	100.0	100.0	
85°	91	203	9	55	41	33	41	33	27	39	32	27					
90	15	132	10	51	38	30	37	30	25	36	29	24					

MOUNTING DATA

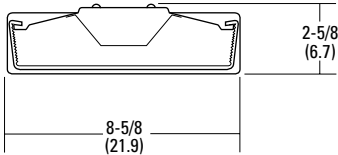
Suspension Kit Ceiling Types: F1 for use with most T-bar and screw slot grid ceiling applications. Designed for on-grid and off-grid installations.
F2 for use with recessed or surface-mount horizontal J-box applications.
For unit or row installation; surface or suspend mounting.
Individual installation — One double-stem or two single-stem hangers required.
For aircraft cable, one STACG_, STACGF_, or STACGE_ required for each suspension point.
Note: 2' configurations with emergency option cannot be stem mounted.
See ACCESSORIES below for hanging devices.



DIMENSIONS

All dimensions are inches (centimeters) unless otherwise noted.

Specifications	
Length:	48 (122.0)
Width:	8-5/8 (21.9)
Depth:	2-5/8 (6.7)



All dimensions are inches (centimeters) unless otherwise indicated.

FEATURES & SPECIFICATIONS

INTENDED USE — SBL LED wraparound provides a digital lighting platform to deliver general ambient lighting for surface-mount applications. The SBL provides a similar look to that of an existing fluorescent wrap with all of the excellent benefits of LED: energy savings, long life, and maintenance savings. Ideal for closets, storage rooms, and offices.

CONSTRUCTION — Linear side prisms control brightness, pyramidal bottom prisms minimize lamp image. Continuous side flanges on fixture body provide light trap and continuous diffuser support to prevent accidental opening and simplify maintenance. Full depth, white enamel end plates.

Die-formed from code gauge cold-rolled steel. Channel cover snaps into place without the use of tools. Full end cap factory installed to reduce job site labor.

OPTICS — The translucent white diffuser reduces glare and pixilation without impacting performance.

ELECTRICAL — Long-life LEDs, coupled with high-efficiency drivers, provide superior quantity and quality of illumination for extended service life. 90% LED lumen maintenance at 50,000 hours (L90/50,000). The LEDs have a CRI of 82.

eldoLED driver options deliver choice of dimming range and choices for control, while assuring flicker-free, low-current inrush, 89% efficiency and low EMI.

Pair the SBL with the fixture mount Sensor Switch LSXR sensor for additional energy savings when the space is unoccupied. The LSXRHL sensor dims the fixture down to a low-level setting when there is no occupancy. This option is ideal for stairwells, back rooms, and closets due to the low occupancy level in those spaces.

Optional nLight® embedded controls continuously monitor system performance, allow for constant lumen management / compensation function, facilitate simple "plug-and-play" network and controls upgrading via Cat-5 cable. Ballast disconnect provided where required to comply with US and Canadian codes.

LISTINGS — CSA certified to meet U.S. and Canadian standards.

Damp listed.

WARRANTY — 5-year limited warranty. Complete warranty terms located at www.acuitybrands.com/CustomerResources/Terms_and_conditions.aspx

Note: Actual performance may differ as a result of end-user environment and application.

All values are design or typical values, measured under laboratory conditions at 25 °C.

Specifications subject to change without notice.

Catalog Number
Notes
Type

Square-basket LED Wraparound



CSA+ Capable Luminaire

This item is an A+ capable luminaire, which has been designed and tested to provide consistent color appearance and out-of-the-box control compatibility with simple commissioning.

- All configurations of this luminaire meet the Acuity Brands' specification for chromatic consistency
- This luminaire is part of an A+ Certified solution for nLight® control networks when ordered with drivers marked by a shaded background*
- This luminaire is part of an A+ Certified solution for nLight control networks, providing advanced control functionality at the luminaire level, when selection includes driver and control options marked by a shaded background*

To learn more about A+, visit www.acuitybrands.com/aplus.

*See ordering tree for details

SBL4 LED Wraparound



A+ Capable options indicated by this color background.

ORDERING INFORMATION

Lead times will vary depending on options selected. Consult with your sales representative.

Example: SBL4 4000LM 80CRI 35K MIN10 GZT MVOLT

SBL4															
Series		Lumens ¹		CRI		Color temperature		Minimum Dimming Level		Control		Voltage			
SBL4	4' LED wrap	3000LM	3000 lumens	80CRI	80 CRI	30K	3000 K	MIN10	Dims to 10% ²	GZT	Generic 0-10V Dimming	MVOLT	120-277V		
		4000LM	4000 lumens			35K	3500 K	MIN1	Dims to 1% ³					347	347V ⁵
		4800LM	4800 lumens			40K	4000 K	NODIM	On/off, non-dimming ⁴	ZT	eldoLED 0-10V Dimming				
		6000LM	6000 lumens			50K	5000 K	SLD	Step-level dimming ⁴						
		7200LM	7200 lumens												

Emergency Options		Lumen Management		Occupancy Control		Occupancy Sensor Technology		Options	
EL7L	700 nominal lumen battery pack (non-CEC compliant) ⁶	(blank)	None	LSXRHL	Sensor Switch [®] fixture mount sensor with High/Low occupancy operation ^{8,9}	PIR	Passive Infrared	USPOM	US Point of Manufacture
EL14L	1400 nominal lumen battery pack (non-CEC compliant) ⁶	CL80	Constant lumen output, 80%	LSXR10	Sensor Switch [®] fixture mount sensor with on/off occupancy operation ⁸				
E10WLCP	EM Self-Diagnostic battery pack, 10W Constant Power, CEC compliant ⁶								
EMG	for use with nLight on generator supply EM power ⁷								

ORDERING INFORMATION

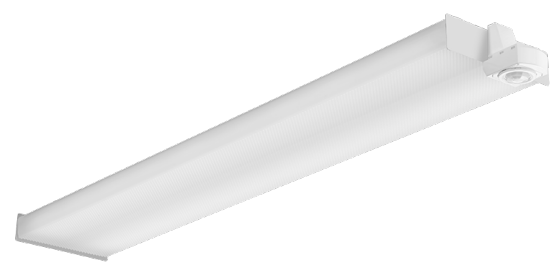
Catalog number	UPC	Description	Lumens	Color temperature	Voltage	Wattage	Pallet qty	Standard carton qty.
SBL4 347 LP835	190887855692	4' LED Wraparound	3,933	3500 K	347	32	70	1
SBL4 347 LP840	190887856675	4' LED Wraparound	3,994	4000 K	347	32	70	1

Notes

- 1 Approximate lumen output.
- 2 Requires GZT control option.
- 3 Requires GZT, ZT, or NLIGHT control.
- 4 Not available with Control or Sensor Options.
- 5 Not available with SLD option.
- 6 Not available with 7200LM option.
- 7 nLight EMG option requires a connection to existing nLight network. Power is provided from a separate N80 or N100 enabled fixture. Requires NLIGHT.
- 8 Requires MIN1, ZT and PIR options.
- 9 Dims to approximately 10% light output when unoccupied.

SBL4 LED Wraparound

Performance Data			
Lumen Package	Lumens	Input Watts	LPW
3000LM 80CRI 30K	3165	25.5	124
3000LM 80CRI 35K	3236	25.5	127
3000LM 80CRI 40K	3286	25.5	129
3000LM 80CRI 50K	3407	25.5	133
4000LM 80CRI 30K	3847	32.4	119
4000LM 80CRI 35K	3933	32.4	121
4000LM 80CRI 40K	3994	32.4	123
4000LM 80CRI 50K	4141	32.4	128
4800LM 80CRI 30K	4698	40.5	116
4800LM 80CRI 35K	4802	40.5	119
4800LM 80CRI 40K	4877	40.5	120
4800LM 80CRI 50K	5057	40.5	125
6000LM 80CRI 30K	5985	49.9	120
6000LM 80CRI 35K	6119	49.9	123
6000LM 80CRI 40K	6214	49.9	125
6000LM 80CRI 50K	6443	49.9	129
7200LM 80CRI 30K	7052	61.9	114
7200LM 80CRI 35K	7209	61.9	117
7200LM 80CRI 40K	7321	61.9	118
7200LM 80CRI 50K	7591	61.9	123

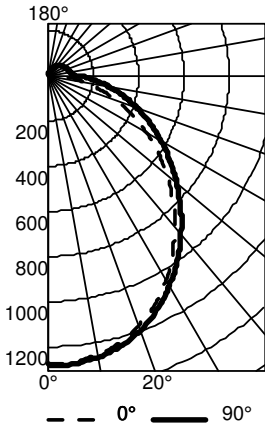


Sensor Switch LSXRHL Sensor	
Lens type:	10 - Low Mount 360° coverage
Dimming:	HL - High/Low Occupancy operation
Min Dim Level:	3V - approximately 10% light output when unoccupied
Time Delay:	5M - 5 minutes

How to Estimate Delivered Lumens in Emergency Mode
Use the formula below to estimate the delivered lumens in emergency mode.
Delivered Lumens = 1.25 x P x LPW
P = Output power of emergency driver. P = 10W for E10WLCP option.
LPW = Lumen per watt rating of the luminaire. LPW information available in Performance Data section.

PHOTOMETRICS

SBL4 4000LM 80CRI 35K



CP Summary		Coefficients of Utilization												Zonal Lumen Summary			
		pc	80%			20%			50%								
		0°	90	pw	70%	50%	30%	70%	50%	30%	10%	50%	30%	10%	Zone	Lumens	% Lamp
0°	1279	1279	0	117	117	117	114	114	114	107	107	107	0° - 30°	979	24.9	24.9	
5°	1275	1281	1	106	101	96	98	94	90	92	89	86	0° - 40°	1583	40.2	40.2	
15°	1224	1240	2	96	88	80	85	78	73	80	75	70	0° - 60°	2748	69.9	69.9	
25°	1118	1139	3	88	77	68	75	67	61	71	64	59	0° - 90°	3660	93.1	93.1	
35°	962	997	4	80	68	59	66	58	51	63	56	50	90° - 120°	182	4.6	4.6	
45°	780	829	5	74	61	51	59	51	44	56	49	43	90° - 130°	221	5.6	5.6	
55°	596	657	6	68	55	46	53	45	39	51	43	38	90° - 150°	263	6.7	6.7	
65°	414	497	7	63	49	41	48	40	34	46	39	33	90° - 180°	273	6.9	6.9	
75°	242	344	8	59	45	37	44	36	30	42	35	30	0° - 180°	3933	100.0	100.0	
85°	91	203	9	55	41	33	41	33	27	39	32	27					
90	15	132	10	51	38	30	37	30	25	36	29	24					

MOUNTING DATA

Suspension Kit Ceiling Types: F1 for use with most T-bar and screw slot grid ceiling applications. Designed for on-grid and off-grid installations.
F2 for use with recessed or surface-mount horizontal J-box applications.
For unit or row installation; surface or suspend mounting.
Individual installation — One double-stem or two single-stem hangers required.
For aircraft cable, one STACG_, STACGF_, or STACGE_ required for each suspension point.
Note: 2' configurations with emergency option cannot be stem mounted.
See ACCESSORIES below for hanging devices.



DIMENSIONS

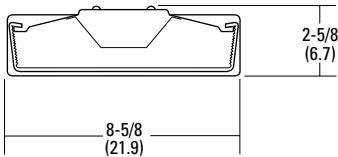
All dimensions are inches (centimeters) unless otherwise noted.

Specifications

Length: 48 (122.0)

Width: 8-5/8 (21.9)

Depth: 2-5/8 (6.7)



All dimensions are inches (centimeters) unless otherwise indicated.