

Product Specifications

Cat. No.	Ground Rod Size	Conductor Size	
		Solid	Stranded
Furseweld Type SCR1			
SCR1-58-6808	5/8"	6,8	8
SCR1-58-3446	5/8"	3,4	4,6
SCR1-58-1223	5/8"	1,2	2,3
SCR1-58-2010	5/8"	2/0, 1/0	1/0, 1
SCR1-58-0020	5/8"		2/0
SCR1-34-6808	3/4"	6,8	8
SCR1-34-3446	3/4"	3,4	4,6
SCR1-34-1223	3/4"	1,2	2,3
SCR1-34-2010	3/4"	2/0, 1/0	1/0, 1
SCR1-34-0020	3/4"		2/0
SCR1-34-0040	3/4"		4/0

Furseweld Type SCR2			
SCR2-58-6808	5/8"	6,8	8
SCR2-58-3446	5/8"	3,4	4,6
SCR2-58-1223	5/8"	1,2	2,3
SCR2-58-2010	5/8"	2/0, 1/0	1/0, 1
SCR2-58-0020	5/8"		2/0
SCR2-34-6808	3/4"	6,8	8
SCR2-34-3446	3/4"	3,4	4,6
SCR2-34-1223	3/4"	1,2	2,3
SCR2-34-2010	3/4"	2/0, 1/0	1/0, 1
SCR2-34-0020	3/4"		2/0
SCR2-34-0040	3/4"		4/0

* The weight per 100 is 20 lbs. and the standard carton/outer pack is 6 for all catalog numbers.

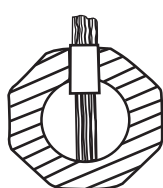
Cat. No.	Ground Rod Size	Conductor Size	
		Solid	Stranded
Furseweld Type SCR17			
SCR17-58-6808	5/8 ¹¹	6,8	8
SCR17-58-3446	5/8 ¹¹	3,4	4,6
SCR17-58-1223	5/8 ¹¹	1,2	2,3
SCR17-34-6808	3/4 ¹¹	6,8	8
SCR17-34-3446	3/4 ¹¹	3,4	4,6
SCR17-34-1223	3/4 ¹¹	1,2	2,3

Furseweld Type SCR24			
SCR24-58-6808	5/8"	6,8	8
SCR24-58-3446	5/8"	3,4	4,6
SCR24-58-1223	5/8"	1,2	2,3
SCR24-34-6808	3/4"	6,8	8
SCR24-34-3446	3/4"	3,4	4,6
SCR24-34-1223	3/4"	1,2	2,3

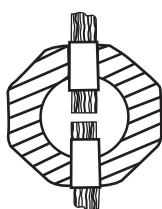
Furseweld Type SCR25			
SCR25-58-6808	5/8"	6,8	8
SCR25-58-3446	5/8"	3,4	4,6
SCR25-58-1223	5/8"	1,2	2,3
SCR25-34-6808	3/4"	6,8	8
SCR25-34-3446	3/4"	3,4	4,6
SCR25-34-1223	3/4"	1,2	2,3

Furseweld Type SCR27			
SCR27-58-6808	5/8"	6,8	8
SCR27-58-3446	5/8"	3,4	4,6
SCR27-34-6808	3/4"	6,8	8
SCR27-34-3446	3/4"	3,4	4,6
SCR27-34-1223	3/4"	1,2	2,3

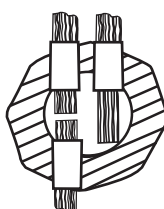
Wire Positioning



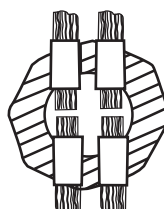
SCR1



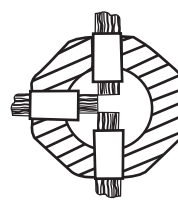
SCR2



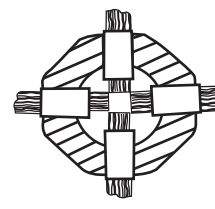
SCR17



SCR24

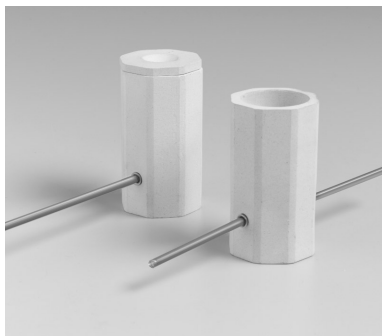


SCR25



SCR27

SureShot™ Welding Mold



Thomas & Betts introduces a new approach to the perfect connection... SureShot™, an extension of the Furseweld® line of exothermic welding products.

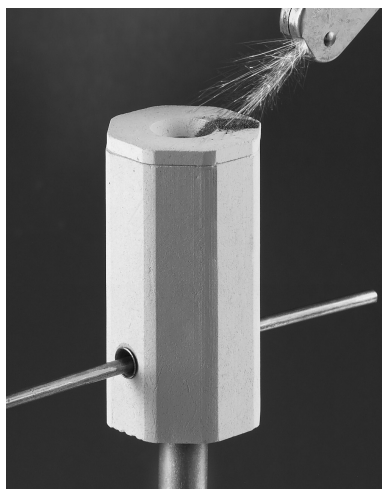
SureShot™ molds come completely packaged with everything necessary for a connection. They are fast and easy to use. The contractor simply positions the mold, adds the weld powder and starting powder, and ignites it with a flint gun.

SureShot™ molds are disposable, so there's no maintenance involved. And, it's not necessary to remove the mold in underground installations because SureShot™ molds are made from an "earth friendly" ceramic.

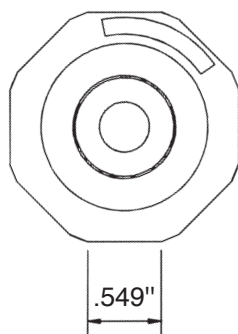
The hexagonal SureShot™ design is easy to grasp and hold without removing safety gloves, and it won't roll away if it's laid down while the installer prepares the connection.

Features and Benefits:

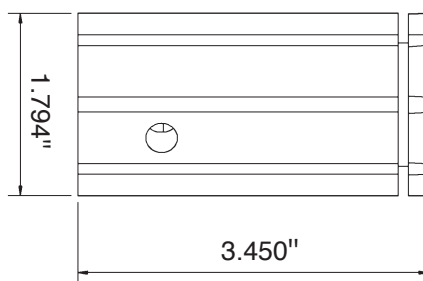
- Fast and easy to use
- Packaged with everything necessary for a connection
- Maintenance-free disposable molds
- Made of biodegradable ceramic
- Ergonomic hexagonal design



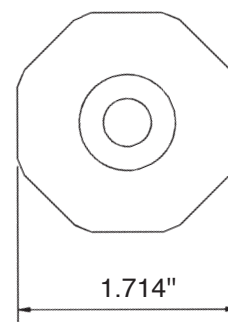
GROUNDING



Cover



Welding Mold



Disk