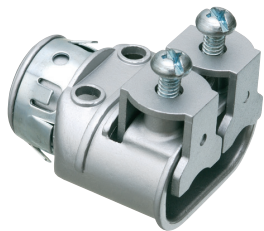


## Duplex SADDLEGRIP® SNAP-TITE® Connectors



Zinc die-cast. For aluminum and steel Flex • AC • AC90 • MCI • MCI-A cable.

SNAP-TITE® and SNAP2IT® products have been tested and listed by UL in accordance with UL's ground fault requirements. For additional information see page 7.

(See page E-1 for ring removal instructions.)

CATALOG NUMBER	UPC/DCI/NAED MFG #018997	TRADE SIZE	KO SIZE	UNIT PKG	STD PKG	DIM A	DIM B	DIM C	CABLE RANGE
SG3838ST	80152	3/8	1/2	25	100	.455	1.610	.780	(2) .445-.610
SG3838AST*	36210	3/8	1/2	25	100	.605	1.560	.780	(2) .445-.610

\*Provided with insulated throat.

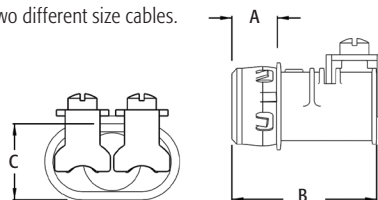
With independent securing of the cables, you can use two different size cables.

Refer to chart on page E-28 for a list of cable types.

See page E-30 and E-31 for MCI-A cable ranges.

Concrete tight when taped.

**PATENTED.**



## Duplex SADDLEGRIP® SNAP-TITE® Connectors



Zinc die-cast. For aluminum and steel Flex • AC • AC90 • MCI • MCI-A cable.

SNAP-TITE® and SNAP2IT® products have been tested and listed by UL in accordance with UL's ground fault requirements. For additional information see page 7.

(See page E-1 for ring removal instructions.)

CATALOG NUMBER	UPC/DCI/NAED MFG #018997	TRADE SIZE	KO SIZE	UNIT PKG	STD PKG	DIM A	DIM B	DIM C	CABLE RANGE
SG3838ST	80152	3/8	1/2	25	100	.455	1.610	.780	(2) .445-.610
SG3838AST*	36210	3/8	1/2	25	100	.605	1.560	.780	(2) .445-.610

\*Provided with insulated throat.

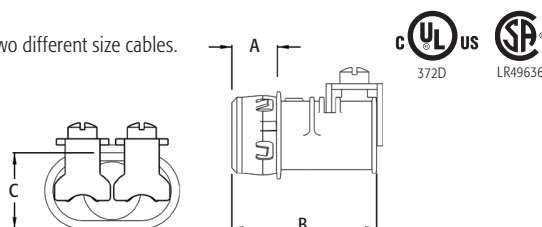
With independent securing of the cables, you can use two different size cables.

Refer to chart on page E-28 for a list of cable types.

See page E-30 and E-31 for MCI-A cable ranges.

Concrete tight when taped.

**PATENTED.**



UL US 372D  
SP LR49636