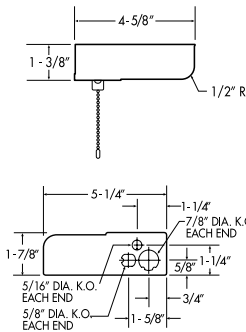




The **SLIM** series, rugged design for commercial and industrial applications, is available in 4 lengths and accommodates all popular T8 and T12 lamp types commonly found in other luminaires in commercial facilities, reducing the number of lamps on the maintenance schedule.

- The SLIM series is built to provide task lighting for assembly and workstations.
- The SLIM series accommodates popular lamp types.
- Available in 4 lengths, the SLIM can be specified with T8 or T12 lamps to fit any application.

Dimensions



SLIM Features & Benefits

- Shallow, unobtrusive 1-7/8" depth provides a discreet source of functional illumination.
- Available in 4 lengths and accommodates popular T8 and T12 lamps.
- Stay white, snap fit, damage resistant white ribbed acrylic lens provides even illumination.
- Housing is post-painted after fabrication to ensure a high quality finish.
- Includes conduit connector and mounting hardware.
- Hingeable service tray for quick installation and maintenance.
- Meets National Electric Code for closet lighting. Includes on/off pull chain, F15T8 lamp and special knockout pattern for J box mounting (CLOSET15PH).
- Rocker switch and grounded convenience available as field installed kit. Order part number (SWCO-KIT).
- U.L. listed.



CLOSET15PH

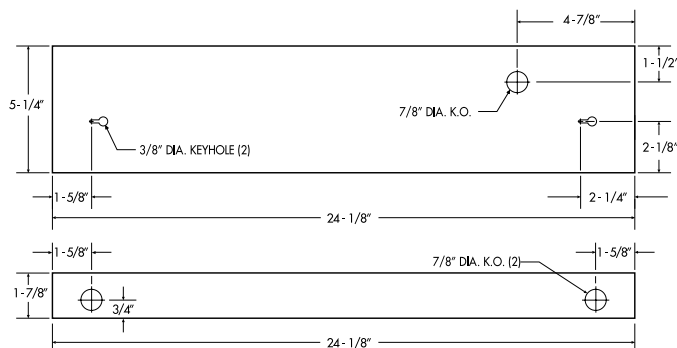
Complies with NEC Code requirements for closet lighting.

T8 & T12 Fluorescent SLIM Series Ordering Information

Series	Lamps (not included)	Ballast	H	L	W	Input Wattage
CLOSET15PH	(1)-15W T8	Magnetic Preheat, NPF 120V	1-3/8"	18-1/8"	4-5/8"	15
SLIM15TS	(1)-15W T12	Magnetic Trigger Start, NPF 120V	1-7/8"	18-1/8"	5-1/4"	28
SLIM20TS	(1)-20W T12	Magnetic Trigger Start, NPF 120V	1-7/8"	24-1/8"	5-1/4"	30
SLIM30	(1)-30W T12	Magnetic Rapid Start, NPF 120V	1-7/8"	36"	5-1/4"	30
SLIM40	(1)-34/40W T12	Magnetic Rapid Start, NPF 120V	1-7/8"	48"	5-1/4"	34/40
SLIM17B11	(1)-17W T8	Electronic, Instant Start HPF 120V	1-7/8"	24-1/8"	5-1/4"	20
SLIM25B11	(1)-25W T8	Electronic, Instant Start HPF 120V	1-7/8"	36"	5-1/4"	25
SLIM32B11	(1)-32W T8	Electronic, Instant Start HPF 120V	1-7/8"	48"	5-1/4"	31

Accessories

SWCO-KIT = Rocker switch and outlet (field install)



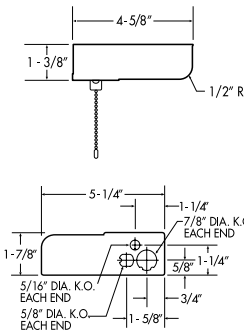
ADDITIONAL LENGTHS ARE 18-1/8", 36" AND 48"



The **SLIM** series, rugged design for commercial and industrial applications, is available in 4 lengths and accommodates all popular T8 and T12 lamp types commonly found in other luminaires in commercial facilities, reducing the number of lamps on the maintenance schedule.

- The SLIM series is built to provide task lighting for assembly and workstations.
- The SLIM series accommodates popular lamp types.
- Available in 4 lengths, the SLIM can be specified with T8 or T12 lamps to fit any application.

Dimensions



SLIM Features & Benefits

- Shallow, unobtrusive 1-7/8" depth provides a discreet source of functional illumination.
- Available in 4 lengths and accommodates popular T8 and T12 lamps.
- Stay white, snap fit, damage resistant white ribbed acrylic lens provides even illumination.
- Housing is post-painted after fabrication to ensure a high quality finish.
- Includes conduit connector and mounting hardware.
- Hingeable service tray for quick installation and maintenance.
- Meets National Electric Code for closet lighting. Includes on/off pull chain, F15T8 lamp and special knockout pattern for J box mounting (CLOSET15PH).
- Rocker switch and grounded convenience available as field installed kit. Order part number (SWCO-KIT).
- U.L. listed.

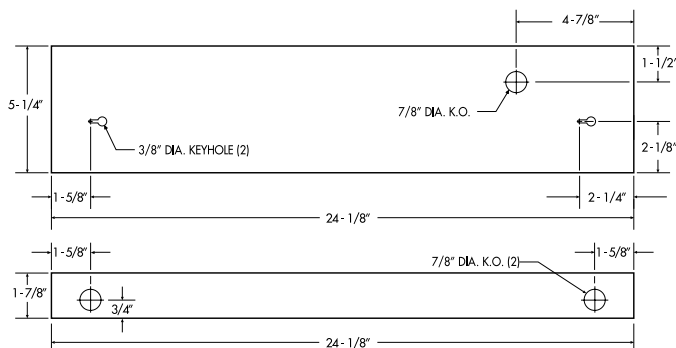


T8 & T12 Fluorescent SLIM Series Ordering Information

Series	Lamps (not included)	Ballast	H	L	W	Input Wattage
CLOSET15PH	(1)-15W T8	Magnetic Preheat, NPF 120V	1-3/8"	18-1/8"	4-5/8"	15
SLIM15TS	(1)-15W T12	Magnetic Trigger Start, NPF 120V	1-7/8"	18-1/8"	5-1/4"	28
SLIM20TS	(1)-20W T12	Magnetic Trigger Start, NPF 120V	1-7/8"	24-1/8"	5-1/4"	30
SLIM30	(1)-30W T12	Magnetic Rapid Start, NPF 120V	1-7/8"	36"	5-1/4"	30
SLIM40	(1)-34/40W T12	Magnetic Rapid Start, NPF 120V	1-7/8"	48"	5-1/4"	34/40
SLIM17B11	(1)-17W T8	Electronic, Instant Start HPF 120V	1-7/8"	24-1/8"	5-1/4"	20
SLIM25B11	(1)-25W T8	Electronic, Instant Start HPF 120V	1-7/8"	36"	5-1/4"	25
SLIM32B11	(1)-32W T8	Electronic, Instant Start HPF 120V	1-7/8"	48"	5-1/4"	31

Accessories

SWCO-KIT = Rocker switch and outlet (field install)



ADDITIONAL LENGTHS ARE 18-1/8", 36" AND 48"