



# ELLIOTT ELECTRIC SUPPLY

We Deliver...Lower Cost, Quality Products, & Personal Service

3804 South Street  
75964-7263, TX Nacogdoches  
Phone: 936-569-7941  
Fax: 936-560-4685



## T50M 1/2 T FM5 CND BD *Crouse-Hinds*

Catalog Number	T50M
Manufacturer	Crouse-Hinds
Description	Conduit Body, ElectroGalvanized With Aluminum Acrylic Paint, Form 5 Body Type, 1/2 In Trade Size, Threaded Connection, T Shape, Side Cable Entry, 3 Hubs, 1/2 In Hub Size, Tee Side Hub Location, T Configuration, 5.38 In Length, 1.34 In Width, 2.05 In Height, Threaded, 1.06 LB/Ea
Weight per unit	1.1 (lbs/each)
Product Category	Bodies & Covers

### Features

Form	Form 5
Material	MALLEABLE IRON

### Descriptions

Description	1/2 T FM5 CND BD
-------------	------------------

### Manufacturer Information

Brand	EATON CROUSE-HINDS SERIES
GTIN	00782274756233
sub brand	Condulet
UPC	782274756233

### Taxonomies, Classifications, and Categories

Category Description	FORM 5 CONDULETS, COVERS, & GASKETS
Type	T

### Packaging

Carton	10
Weight Per each	1.06

### Uses, Certifications, and Standards

Enclosure standard	Condulet UL 514B, CSA C22.2, CUL
--------------------	-------------------------------------

# Form 5 Conduit Outlet Bodies, Covers & Gaskets – Malleable Iron

## Applications:

Form 5 Malleable Iron Conduit Bodies are used in conduit systems to:

- Act as pull outlets for conductors being installed
- Provide openings for making splices and taps in conductors
- Act as mounting outlets for lighting fixtures and wiring devices
- Connect conduit sections
- Provide taps for branch conduit runs
- Make 90 degree bends in conduit runs
- Provide for access to conductors for maintenance and future system changes

## Features:

- Interchangeable with Appleton Form 35 Conduit Bodies
- Built-in rollers on 1 1/4" to 4" C and LB bodies to facilitate wire pulling
- Smooth and rounded integral bushings for protection of wire insulation
- Solid neoprene gaskets may be converted to open type by pulling out perforated center section
- Stainless steel cover screws
- Domed sheet steel covers provide additional cubic capacity
- Integral gasket cover provides NEMA 4 rating

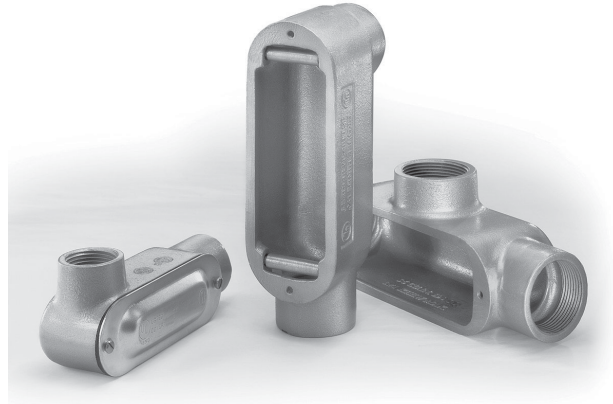
## Certifications and Compliances:

- UL File No. E-15022
- UL Standard 514B
- cUL/CSA to CSA Standard C22.2 No. 18

## Standard Materials:

- Bodies – malleable iron
- Gaskets – neoprene
- Covers – sheet steel or malleable
- Cover screws – stainless steel

Form 35 is a registered trademark of Appleton Electric/EGS.



Form 5

## Standard Finishes:

- Malleable iron – electrogalvanized and aluminum acrylic paint
- Neoprene – natural
- Sheet steel – electrogalvanized
- Stainless steel – natural

## Options:

Description	Suffix
• Hot dip galvanized .....	HDG

# Form 5 Conduit Outlet Bodies, Covers & Gaskets – Malleable Iron

## Options:

### Description

- SnapPack™ – packaged body and integral gasket cover†.....CG  
Available on all configurations (1/2" - 2")

### Suffix

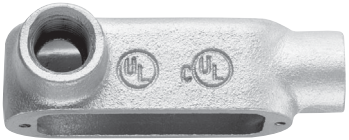
## TYPE LB‡



Cat. #	Size	Internal Vol. in Cu. In.	Unit Qty.	Wt. Lbs. Per 100	Max. No. of Conductors
LB50M	1/2"	4.5	10	71	N/A
LB75M	3/4"	7.5	10	97	3 #6 AWG
LB100M	1"	12.5	10	143	3 #4 XHHW
LB125M*	1 1/4"	32.0	5	287	3 #2 XHHW
LB150M*	1 1/2"	35.3	5	331	3 #2 XHHW
LB200M*	2"	73.0	1	534	3 #4/0 XHHW
LB250M*	2 1/2"	142.0	1	1105	3 #300MCM XHHW
LB300M*	3"	173.0	1	1160	3 #400MCM XHHW
LB350M*	3 1/2"	292.0	1	1989	3 #500MCM XHHW
LB400M*†	4"	324.0	1	2099	3 #500MCM XHHW

\*1 1/4" - 4" LB and C bodies supplied with built-in rollers to facilitate wire pulling.  
†Self-certified to #500MCM XHHW.

## TYPE LL‡



Cat. #	Size	Internal Vol. in Cu. In.	Unit Qty.	Wt. Lbs. Per 100	Max. No. of Conductors
LL50M	1/2"	4.5	10	76	N/A
LL75M	3/4"	7.5	10	95	3 #6 AWG
LL100M	1"	12.5	10	138	3 #4 XHHW
LL125M	1 1/4"	32.0	5	309	3 #2 XHHW
LL150M	1 1/2"	33.0	5	332	3 #2 XHHW
LL200M	2"	68.0	1	497	3 #4/0 XHHW
LL250M	2 1/2"	142.0	1	1105	3 #300MCM XHHW
LL300M	3"	173.0	1	1437	3 #350MCM XHHW
LL350M	3 1/2"	292.0	1	2321	3 #350MCM XHHW
LL400M	4"	324.0	1	2431	3 #350MCM XHHW

## TYPE C‡



Cat. #	Size	Internal Vol. in Cu. In.	Unit Qty.	Wt. Lbs. Per 100	Max. No. of Conductors
C50M	1/2"	4.5	10	98	N/A
C75M	3/4"	7.5	10	118	3 #6 AWG
C100M	1"	12.5	10	170	3 #4 XHHW
C125M*	1 1/4"	35.0	5	309	3 #2 XHHW
C150M*	1 1/2"	35.3	5	368	3 #1/0 XHHW
C200M*	2"	75.0	1	552	3 #4/0 XHHW
C250M*	2 1/2"	153.0	1	1216	3 #300MCM XHHW
C300M*	3"	181.0	1	1437	3 #350MCM XHHW
C350M*	3 1/2"	290.0	1	2210	3 #350MCM XHHW
C400M*	4"	320.0	1	2321	3 #350MCM XHHW

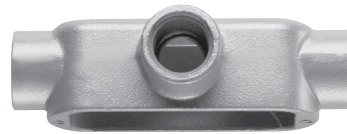
\*1 1/4" - 4" LB and C bodies supplied with built-in rollers to facilitate wire pulling.

## TYPE LR‡



Cat. #	Size	Internal Vol. in Cu. In.	Unit Qty.	Wt. Lbs. Per 100	Max. No. of Conductors
LR50M	1/2"	4.5	10	71	N/A
LR75M	3/4"	7.5	10	100	3 #6 AWG
LR100M	1"	12.5	10	157	3 #4 XHHW
LR125M	1 1/4"	32.0	5	332	3 #2 XHHW
LR150M	1 1/2"	35.3	5	345	3 #2 XHHW
LR200M	2"	68.0	1	626	3 #4/0 XHHW
LR250M	2 1/2"	142.0	1	1105	3 #300MCM XHHW
LR300M	3"	173.0	1	1437	3 #350MCM XHHW
LR350M	3 1/2"	292.0	1	2321	3 #350MCM XHHW
LR400M	4"	324.0	1	2500	3 #350MCM XHHW

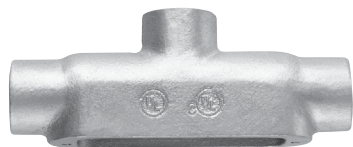
## TYPE T‡



Cat. #	Size	Internal Vol. in Cu. In.	Unit Qty.	Wt. Lbs. Per 100	Max. No. of Conductors
T50M	1/2"	6.0	10	111	N/A
T75M	3/4"	9.5	10	137	3 #6 AWG
T100M	1"	15.0	10	196	3 #4 XHHW
T125M	1 1/4"	33.0	5	332	3 #2 XHHW
T150M	1 1/2"	36.0	5	368	3 #1 XHHW
T200M	2"	76.0	1	663	3 #4/0 XHHW
T250M	2 1/2"	142.0	1	1271	3 #300MCM XHHW
T300M	3"	173.0	1	1547	3 #350MCM XHHW
T350M	3 1/2"	292.0	1	2542	3 #350MCM XHHW
T400M	4"	324.0	1	2542	3 #350MCM XHHW

# Form 5 Conduit Outlet Bodies, Covers & Gaskets – Malleable Iron

## TYPE TB‡



Cat. #	Size	Internal Vol. in Cu. In.	Unit Qty.	Wt. Lbs. Per 100	Max. No. of Conductors
TB50M	1/2"	6.0	10	88	N/A
TB75M	3/4"	9.5	10	120	3 #6 AWG
TB100M	1"	15.0	10	197	3 #6 AWG
TB125M	1 1/4"	33.0	5	342	3 #6 AWG
TB150M	1 1/2"	36.0	5	420	3 #4 XHHW
TB200M	2"	76.0	1	691	3 #1/0 XHHW

## TYPE X‡



Cat. #	Size	Internal Vol. in Cu. In.	Unit Qty.	Wt. Lbs. Per 100	Max. No. of Conductors
X50M	1/2"	6.0	10	139	N/A
X75M	3/4"	9.5	10	172	3 #6 AWG
X100M	1"	15.0	10	247	3 #4 XHHW
X125M	1 1/4"	33.0	5	416	3 #2 XHHW
X150M	1 1/2"	36.0	5	463	3 #1/0 XHHW
X200M	2"	76.0	1	833	3 #4/0 XHHW

## SHEET STEEL COVERS



Cat. #	Size	Unit Qty.	Wt. Lbs. Per 100
K50S	1/2"	50	9
K75S	3/4"	50	13
K100S	1"	25	19
K125S	1 1/4" and 1 1/2"	20	31
K200S	2"	5	50
K250S	2 1/2" and 3"	5	94
K350S	3 1/2" and 4"	5	138

## CAST IRON COVERS



Cat. #	Size	Unit Qty.	Wt. Lbs. Per 100
K50CM	1/2"	50	23
K75CM	3/4"	50	31
K100CM	1"	25	41
K125CM	1 1/4" and 1 1/2"	20	91
K200CM	2"	5	208
K250CM	2 1/2" and 3"	5	358
K350CM	3 1/2" and 4"	5	550

## NEOPRENE GASKETS – PERFORATED CENTER



Cat. #	Size	Unit Qty.	Wt. Lbs. Per 100
GK50N	1/2"	100	2.0
GK75N	3/4"	100	2.0
GK100N	1"	50	2.9
GK125N	1 1/4" and 1 1/2"	25	5.0
GK200N	2"	25	8.0
GK250N	2 1/2" and 3"	25	16.0
GK350N	3 1/2" and 4"	25	26.4

## INTEGRAL GASKET COVER – SHEET STEEL



Cat. #	Size	Unit Qty.	Wt. Lbs. Per 100
K50SG	1/2"	50	14
K75SG	3/4"	50	16
K100SG	1"	25	46
K125SG	1 1/4" and 1 1/2"	20	62
K200SG	2"	5	70
K250SG	2 1/2" and 3"	5	190
K350SG	3 1/2" and 4"	5	340

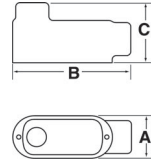
Form 5

# Form 5 Conduit Outlet Bodies, Covers & Gaskets – Malleable Iron

## Dimensions (in Inches):

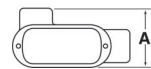
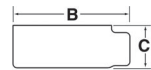
### Type LB

Size	1/2	3/4	1	1 1/4	1 1/2	2	2 1/2	3	3 1/2	4
A	1.34	1.50	1.80	2.60	2.60	3.12	4.31	4.31	5.62	5.62
B	4.68	5.37	6.20	8.12	8.12	10.50	13.60	13.87	16.25	16.60
C	2.05	2.25	2.65	2.75	2.83	4.42	5.40	5.90	6.90	7.21



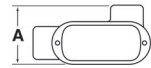
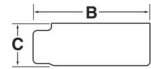
### Type LL

Size	1/2	3/4	1	1 1/4	1 1/2	2	2 1/2	3	3 1/2	4
A	2.05	2.25	2.65	2.75	3.50	4.12	5.71	5.87	7.13	7.13
B	4.68	5.37	6.20	8.12	8.12	10.50	13.60	13.87	16.50	16.50
C	1.37	1.70	1.90	2.75	2.83	3.31	3.90	4.75	6.81	7.19



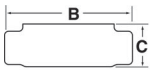
### Type LR

Size	1/2	3/4	1	1 1/4	1 1/2	2	2 1/2	3	3 1/2	4
A	2.05	2.25	2.65	2.75	3.50	4.12	5.71	5.87	6.10	6.95
B	4.68	5.37	6.20	8.12	8.12	10.50	13.60	13.87	6.25	16.25
C	1.37	1.70	1.90	2.75	2.83	3.31	3.90	4.75	5.62	5.62



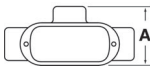
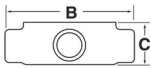
### Type C

Size	1/2	3/4	1	1 1/4	1 1/2	2	2 1/2	3	3 1/2	4
A	1.34	1.50	1.80	2.60	2.60	3.12	4.31	4.31	4.88	4.88
B	5.38	6.00	7.05	9.00	9.00	11.50	15.00	15.12	18.13	18.13
C	1.37	1.70	1.90	2.75	2.83	3.31	3.90	4.75	5.19	5.56



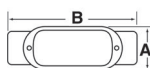
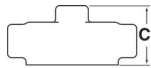
### Type T

Size	1/2	3/4	1	1 1/4	1 1/2	2	2 1/2	3	3 1/2	4
A	2.05	2.25	2.65	2.75	3.50	4.12	5.71	5.87	6.81	7.15
B	5.38	6.00	7.05	9.00	9.00	11.50	15.00	15.12	18.13	18.13
C	1.34	1.50	1.80	2.60	2.60	3.12	4.31	4.31	5.19	5.56



### Type TB

Size	1/2	3/4	1	1 1/4	1 1/2	2
A	1.34	1.50	1.80	2.60	2.60	3.12
B	5.38	6.00	7.05	9.00	9.00	11.50
C	2.05	2.25	2.65	2.75	2.83	4.42



### Type X

Size	1/2	3/4	1	1 1/4	1 1/2	2
A	2.79	2.93	3.56	4.43	4.43	5.40
B	5.41	6.08	7.10	9.10	9.10	11.75
C	1.75	1.97	2.25	2.55	2.75	3.45

