



ELLIOTT ELECTRIC SUPPLY

We Deliver...Lower Cost, Quality Products, & Personal Service

3804 South Street
75964-7263, TX Nacogdoches
Phone: 936-569-7941
Fax: 936-560-4685



TP272 3-1/4" FLT CVR W/1/2 Ko *Crouse-Hinds*

Catalog Number	TP272
Manufacturer	Crouse-Hinds
Description	
Weight per unit	0.1700 (lbs/each)
Product Category	Bar Hangers & Outlet Box Accy.

Features

Material	DIE-CAST ALUMINUM
Shape	Round IN

Material, Color, and Finish

Color	IVORY
Finish	NATURAL

Dimensions and Weight

Size	3-1/4 In
------	----------

Descriptions

Description	3-1/4" FLT CVR W/1/2 KO
Product Type	3 1/4 Round Ceil Pan Covr 1/2 Ko In Cent
Special Features	Weight 18 Lb per 100

Manufacturer Information

Brand	EATON CROUSE-HINDS SERIES
GTIN	00786189102727
Manufacturers Part Number	TP272
sub brand	Commercial Products
UPC	786189102727

Taxonomies, Classifications, and Categories

Category Description	STEEL BOXES & COVERS
Type	FLAT

Packaging

Carton	100
Weight Per each	0.17

Uses, Certifications, and Standards

Application	3-1/4 In Ceiling Pan
standard	UL mA

Steel Octagon Boxes & Ceiling Pans

3 1/4" ROUND CEILING PANST – 4.0 CUBIC INCH CAPACITY

1/2" DEEP
CLAMPS IN BOTTOM
FIXTURE RATED
UL LISTED



TP266

Cat. #	Knockouts		Unit Qty.	Wt. Lbs. Per 100
	Cable	Conduit		
TP266	4 - Cable	1 - 1/2"	50	30

†Weight limit for 3 1/4" and 4" Octagon Outlet Boxes and Ceiling Pans is 50 lbs. for fixture/luminaire. Not suitable for fans.

3 1/4" OCTAGON OUTLET BOXEST – 9.0 CUBIC INCH CAPACITY

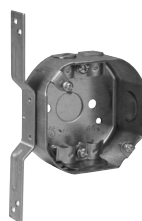
1 1/2" DEEP
FIXTURE RATED
UL LISTED



TP256



TP258



TP259



TP260



TP264

Cat. #	Description	Knockouts		Unit Qty.	Wt. Lbs. Per 100
		Sides	Bottom		
For Conduit – No Clamps					
TP256	-	4 - 1/2"	1 - 1/2"	50	41
TP258	Extension Ring	4 - 1/2"	-	50	31
For Non-metallic Cable with Clamps					
TP259	"S" Bracket, Set 1/2"	4 - Cable, 1 - 1/2"	1 - 1/2"	50	53
TP260	-	4 - Cable, 2 - 1/2"	1 - 1/2"	50	44
TP264	Two Screw Ears	4 - Cable, 2 - 1/2"	1 - 1/2"	50	47

†Weight limit for 3 1/4" and 4" Octagon Outlet Boxes and Ceiling Pans is 50 lbs. for fixture/luminaire. Not suitable for fans.

3 1/4" ROUND CEILING COVERS

UL LISTED



TP270



TP272

Cat. #	Knockouts		Unit Qty.	Wt. Lbs. Per 100
	Cable	Conduit		
TP270	Flat Blank		100	18
TP272	Flat, 1/2" KO in Center		100	18

Steel Octagon Boxes & Ceiling Pans

4" ROUND CEILING PANS* – 6.0 CUBIC INCH CAPACITY

1/2" DEEP
FIXTURE RATED
UL LISTED



TP269



TP267

Cat. #	Description	Knockouts		Unit Qty.	Wt. Lbs. Per 100
		Sides	Bottom		
TP269	KOs Only	-	5 - 1/2"	50	35
TP267	KOs and Clamps	-	4 - Cable, 3 - 1/2"	50	39

*Weight limit for 3/4" and 4" Octagon Outlet Boxes and Ceiling Pans is 50 lbs. for fixture. Not suitable for fans.

4" OCTAGON OUTLET BOXES† – 15.5 CUBIC INCH CAPACITY

1 1/2" DEEP
FOR CONDUIT – NO CLAMPS
FIXTURE RATED
UL LISTED



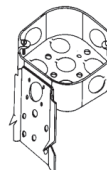
TP274, TP278,
TP834*



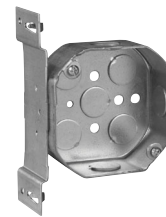
TP276



TP273



TP280



TP282



TP284, TP286

Cat. #	Description	Knockouts		Unit Qty.	Wt. Lbs. Per 100
		Sides	Bottom		
TP274	-	4 - 1/2"	5 - 1/2"	50	50
TP273	Blank Bottom	4 - 1/2"	-	50	51
TP276	-	4 - 3/4"	3 - 1/2", 2 - 3/4"	50	50
TP278	-	2 - 1/2", 2 - 3/4"	3 - 1/2", 2 - 3/4"	50	50
TP280	"C" Bracket	4 - 1/2"	5 - 1/2"	50	60
TP282	"S" Bracket, Set 1/2"	3 - 1/2"	5 - 1/2"	50	58
Air Plenum					
TP834*	For Air Plenum	4 - 1/2"	5 - 1/2"	50	52
Octagon Extension Rings – (Slot & Key Permit Mounting without Removing Box Screws)					
TP284‡	-	4 - 1/2"	-	50	36
TP286‡	-	2 - 1/2", 2 - 3/4"	-	50	36

*For Air Plenum (no mounting holes) - not UL Listed.

†Weight limit for 3/4" and 4" Octagon Outlet Boxes and Ceiling Pans is 50 lbs. for fixture/luminaire. Not suitable for fans.

‡CSA certified.

Steel Boxes

Steel Octagon Boxes & Ceiling Pans

4" OCTAGON OUTLET BOXES† – 15.5 CUBIC INCH CAPACITY

1½" DEEP

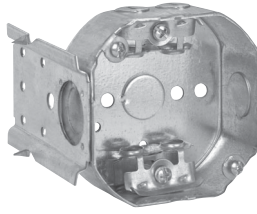
FOR ARMoured & METAL-CLAD (MCI) CABLE – CLAMPS IN EACH END

FIXTURE RATED

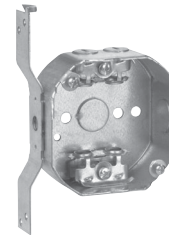
UL LISTED



TP310



TP312



TP314

Cat. #	Description	Knockouts		Unit Qty.	Wt. Lbs. Per 100
		Sides	Bottom		
TP310*	-	4 - Cable, 2 - ½"	1 - ½"	50	57
TP312*	"C" Bracket	4 - Cable, 2 - ½"	1 - ½"	50	66
TP314*	"S" Bracket, Set ½"	4 - Cable, 1 - ½"	1 - ½"	50	64

*UL approved for use with aluminum interlocking grounding metal-clad cable, Type MCIA (Southwire MCAP™).

MCAP™ is a registered trademark of Southwire Company.

†Weight limit for 3¼" and 4" Octagon Outlet Boxes and Ceiling Pans is 50 lbs. for fixture/luminaire. Not suitable for fans.

4" OCTAGON OUTLET BOXES† – 15.5 CUBIC INCH CAPACITY

1½" DEEP

FOR NON-METALLIC CABLE – WITH CLAMPS

FIXTURE RATED

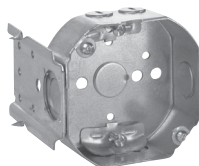
UL LISTED



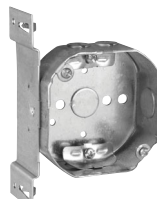
TP298



TP300



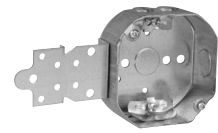
TP302



TP304



TP306



TP308

Cat. #	Description	Knockouts		Unit Qty.	Wt. Lbs. Per 100
		Sides	Bottom		
TP298	-	4 - Cable, 2 - ½"	1 - ½"	50	56
TP300	With Side Nail Holes	4 - Cable, 2 - ½"	1 - ½"	50	55
TP302	"C" Bracket	4 - Cable, 2 - ½"	1 - ½"	50	65
TP304	"S" Bracket, Set ½"	4 - Cable, 1 - ½"	1 - ½"	50	64
TP306	Two Screw Ears	4 - Cable, 2 - ½"	1 - ½"	50	58
TP308	"F" Bracket, Set ½"	4 - Cable, 1 - ½"	1 - ½"	50	64

†Weight limit for 3¼" and 4" Octagon Outlet Boxes and Ceiling Pans is 50 lbs. for fixture/luminaire. Not suitable for fans.

Steel Boxes

Steel Octagon Boxes & Ceiling Pans

4" OCTAGON OUTLET BOXES† – 21.5 CUBIC INCH CAPACITY

2 1/8" DEEP
FOR CONDUIT – NO CLAMPS
FIXTURE RATED
UL LISTED



TP288, TP290, TP294



TP292, TP838*



TP292RED



TP339

Cat. #	Description	Knockouts		Unit Qty.	Wt. Lbs. Per 100
		Sides	Bottom		
TP288	-	4 - 1/2"	3 - 1/2", 2 - 3/4"	25	64
TP288PF‡	-	4 - 1/2"	3 - 1/2", 2 - 3/4"	25	64
TP290	-	4 - 3/4"	3 - 1/2", 2 - 3/4"	25	64
TP290PF‡	-	4 - 3/4"	3 - 1/2", 2 - 3/4"	25	64
TP292	-	2 - 1/2", 2 - 3/4"	3 - 1/2", 2 - 3/4"	25	64
TP292PF‡	-	2 - 1/2", 2 - 3/4"	3 - 1/2", 2 - 3/4"	25	64
TP292RED	-	2 - 1/2", 2 - 3/4"	3 - 1/2", 2 - 3/4"	25	64
TP294	-	4 - 1"	3 - 1/2", 2 - 3/4"	25	64
TP339	Blank Bottom	4 - 1/2"	-	25	65
Air Plenum					
TP838*	For Air Plenum	2 - 1/2", 2 - 3/4"	3 - 1/2", 2 - 3/4"	25	62

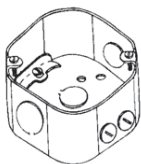
*For Air Plenum (no mounting holes) - not UL Listed.

†Weight limit for 3/4" and 4" Octagon Outlet Boxes and Ceiling Pans is 50 lbs. for fixture/luminaire. Not suitable for fans.

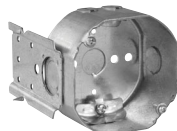
‡TP catalog numbers ending in PF include ground screw with pigtail lead.

4" OCTAGON OUTLET BOXES† – 21.5 CUBIC INCH CAPACITY

2 1/8" DEEP – WITH CABLE CLAMPS
FIXTURE RATED
UL LISTED



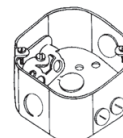
TP316



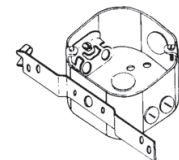
TP318



TP320



TP317



TP338

Cat. #	Description	Knockouts		Unit Qty.	Wt. Lbs. Per 100
		Sides	Bottom		
For Non-metallic Cable					
TP316	-	4 - Cable, 2 - 1/2"	1 - 1/2"	25	68
TP318	"C" Bracket	4 - Cable, 2 - 1/2"	1 - 1/2"	25	88
TP320	"S" Bracket, Set 1/2"	4 - Cable, 1 - 1/2"	1 - 1/2"	25	81
For Armoured & Metal-clad (MCI) Cable – Clamps in Each End					
TP317*	-	4 - Cable, 2 - 1/2"	1 - 1/2"	25	69
TP338*	"S" Bracket, Set 1/2"	4 - Cable, 1 - 1/2"	1 - 1/2"	25	82
TP338PF‡	"S" Bracket, Set 1/2"	4 - Cable, 1 - 1/2"	1 - 1/2"	25	82

*UL approved for use with aluminum interlocking grounding metal-clad cable, Type MCIA (Southwire MCAP™).

MCAP™ is a registered trademark of Southwire Company.

†Weight limit for 3/4" and 4" Octagon Outlet Boxes and Ceiling Pans is 50 lbs. for fixture/luminaire. Not suitable for fans.

‡TP catalog numbers ending in PF include ground screw with pigtail lead.

Steel Boxes