



# ELLIOTT ELECTRIC SUPPLY

We Deliver...Lower Cost, Quality Products, & Personal Service

3804 South Street  
75964-7263, TX Nacogdoches  
Phone: 936-569-7941  
Fax: 936-560-4685



## TP410 4SQ, 1-1/2D STL BX W/1/2 Ko *Crouse-Hinds*

Catalog Number	TP410
Manufacturer	Crouse-Hinds
Description	Steel Switch Box, Ivory, 22 Cu.In Capacity, Square, Knockout Cable Entry, 1/2 In (Bottom);1/2 In (Side) Knockout Size, 17 Knockouts, Screw Mount, 4 In Length, 4 In Width, 1-1/2 In Height, 67 LB/100
Weight per unit	0.6700 (lbs/each)
Product Category	Outlet Boxes, Etc. - Steel

### Features

Material	Steel IN
----------	----------

### Dimensions and Weight

Size	4 In Width X 2-1/2 In Depth X 4 In Height
------	---

### Descriptions

Also Known As...	1900 Box 1900 4" Box
Construction	Drawn
Description	4SQ,1-1/2D STL BX W/1/2 KO

### Manufacturer Information

Brand	EATON CROUSE-HINDS SERIES
GTIN	00786189104103
UPC	786189104103

### Taxonomies, Classifications, and Categories

Category Description	STEEL BOXES & COVERS
Type	SQUARE

### Packaging

Carton	50
Weight Per each	0.67

### Uses, Certifications, and Standards

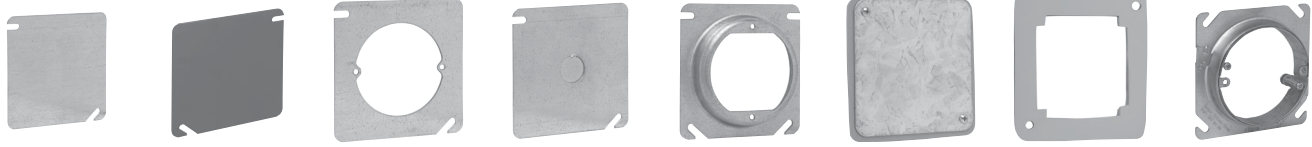
standard	UL mA
----------	-------

# Steel Square Covers

## COVERS FOR 4" SQUARE BOXES – CUBIC INCH CAPACITY (SEE BELOW)

UL LISTED

#8-32 Screw Used on Covers



TP472 TP472RED TP474 TP478 TP478 TP487 TP473, TP475, TP476, TP477, TP479, TP483 TP850\* TP854\* AMR0

Cat. #	Description	Unit Qty.	Wt. Lbs. Per 100	Capacity Cu. In.
TP472†	Flat Blank	50	31	-
TP472RED	Flat Blank, Red	50	31	-
TP474†	Flat, Open with Ears 2 <sup>3</sup> / <sub>4</sub> "	50	21	-
TP478†	Flat, with 1/2" KO	50	31	-
TP487†	Flat, with 3/4" KO	50	29	-
TP473†	Raised 1/4", Open with Ears 2 <sup>3</sup> / <sub>4</sub> "	50	23	1.3
TP476†	Raised 1/2", Open with Ears 2 <sup>3</sup> / <sub>4</sub> "	50	26	4.0
TP477†	Raised 5/8", Open with Ears 2 <sup>3</sup> / <sub>4</sub> "	50	27	5.0
TP475†	Raised 3/4", Open with Ears 2 <sup>3</sup> / <sub>4</sub> "	25	31	6.0
TP479†	Raised 1", Open with Ears 2 <sup>3</sup> / <sub>4</sub> "	25	34	7.0
TP483†	Raised 1 1/4", Open with Ears 2 <sup>3</sup> / <sub>4</sub> "	25	37	8.5
AMR0**	3/4" - 1 1/2" Round Adjustable Mud Ring	25	44	6.1

### Air Plenum

TP850*	Flat Blank Gasketed with Captive Screws	25	31	-
TP854*	Flat Ring Double Gasketed	25	12	-

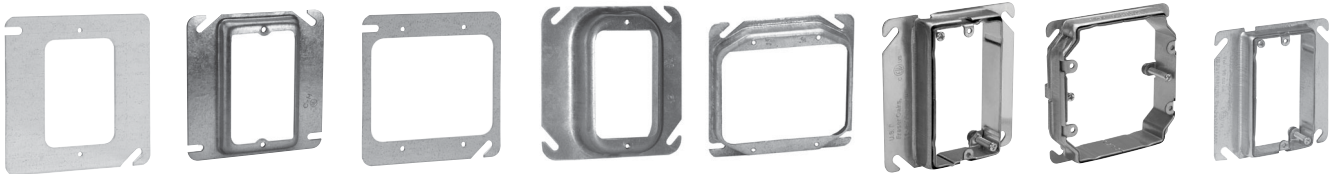
\*For Air Plenum (no mounting holes) - not UL Listed.

\*\*ETL listed.

†CSA certified.

## MUD RINGS FOR 4" SQUARE STEEL OUTLET BOXES

UL LISTED



TP480 TP482, TP484, TP486, TP489 TP494 TP488, TP490 TP496, TP499, TP500, TP501, TP502 AMR1 AMR2 AMR158

Cat. #	Description	Unit Qty.	Wt. Lbs. Per 100	Capacity Cu. In.
<b>One Device</b>				
TP480†	Flat	50	20	-
TP482†	1/4" Raised	50	21	1.8
TP484†	1/2" Raised	50	23	3.8
TP489†	5/8" Raised	50	26	4.3
TP486†	3/4" Raised	50	30	5.5
TP488	1" Raised	50	34	6.8
TP490	1 1/4" Raised	25	39	8.5
AMR1**	3/4" - 1 1/2" Raised Adjustable	25	47	-
AMR158**	5/8" - 1 1/4" Raised Adjustable	25	44	6.0
<b>Two Device</b>				
TP494†	Flat	50	12	-
TP496†‡	1/4" Raised	50	13	3.0
TP498†‡	1/2" Raised	50	18	6.0
TP499†‡	5/8" Raised	50	22	8.0
TP500†‡	3/4" Raised	50	24	9.0
TP501	1 1/4" Raised	25	31	14.0
TP502	1" Raised	25	30	11.7
AMR2**	5/8" - 1 1/2" Raised Adjustable	25	50	11.3

\*\*cULus Listed.

†CSA certified.

‡Slotted design for use with 4" square box partitions.

# Steel Square Covers

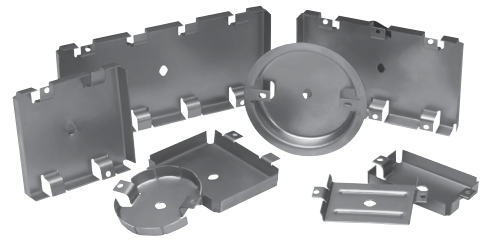
## METALGUARD™ PROTECTIVE PLATES

### Applications:

- For use with single, two, three and four gang commercial or residential boxes/plaster rings; with or without devices, switches, GFCI, etc. installed
- Commercial or residential ceiling boxes

### Features:

- Seals out sheetrock mud, sanding dust and paint overspray to keep the electrical box and its wiring free from contaminants
- Heavy duty reusable metallic plate provides mechanical protection to box and wiring and speeds up trim process
- Easy to install; all you have to do is push them in; they come out easy – just put a screwdriver into the slot in front, turn and pull them out
- Reduces risk of callbacks and expense of rework because of wire and box damage
- MetalGuard serves as a guide for router in cutting out boxes



### Standard Material & Finish:

- 18 gauge steel
- Natural finish

Cat. #	Description	Unit Qty.	Wt. Lbs. Per 100
<b>MGRK</b>	Contractor Kit (120-1G, 40-2G, 20-3G, 5-4G, and 20-Rnd)	1	33.00
<b>MGR1</b>	1G Residential Wire Protector	60	8.20
<b>MGR2</b>	2G Residential Wire Protector	20	4.80
<b>MGR4</b>	4G Residential Wire Protector	5	3.00
<b>MGR0</b>	Rnd Residential Wire Protector	20	4.00
<b>MGMR1</b>	1G Wire Protector for Commercial MR	50	6.55
<b>MGMR2</b>	2G Wire Protector for Commercial MR	50	10.25
<b>MGMRO</b>	Rnd Wire Protector for Commercial MR	50	6.00

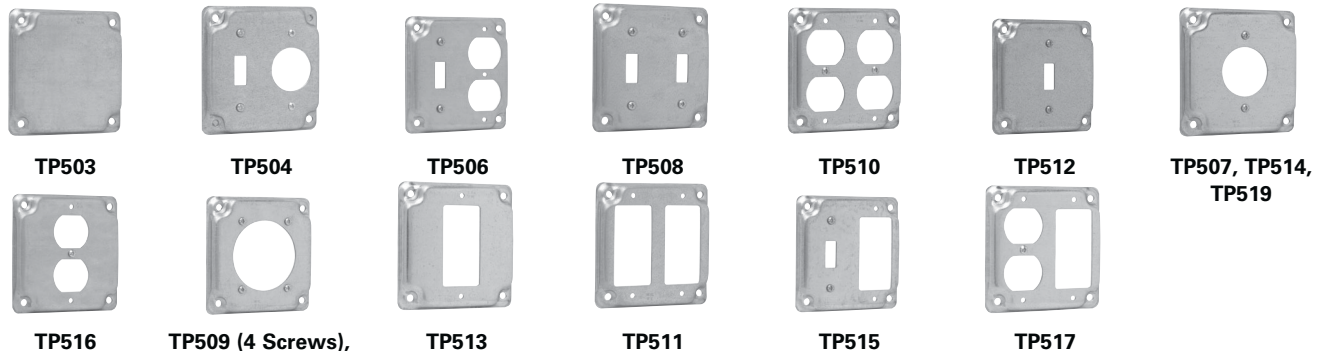
## 4" SQUARE SURFACE COVERS – 5.5 CUBIC INCH CAPACITY

RAISED 1/2"

UL LISTED

CSA LISTED

Screw(s) provided in raised cover kit are for use with the center hole on duplex receptacles. Nuts that are provided in kit are to be used in conjunction with the screws that are provided as standard packaging with devices to mount device to raised cover. For GFCI device installation, no screw is needed; please disregard.



Cat. #	Description	Unit Qty.	Wt. Lbs. Per 100
<b>TP503</b>	Raised Blank	50	35
<b>TP504</b>	For One Toggle Switch and One Single Receptacle 1 <sup>13</sup> / <sub>32</sub> " Dia.	50	31
<b>TP506</b>	For One Toggle Switch and One Duplex Receptacle	50	31
<b>TP508</b>	For Two Toggle Switches	50	35
<b>TP510</b>	For Two Duplex Receptacles	50	26
<b>TP512</b>	For One Toggle Switch	50	35
<b>TP507</b>	For One 20 Amp Single Receptacle 1 <sup>19</sup> / <sub>32</sub> " Dia.	50	37
<b>TP514</b>	For One Single Receptacle 1 <sup>13</sup> / <sub>32</sub> " Dia.	50	34
<b>TP519</b>	For One 30 Amp Twist-Lock Single Receptacle 1 <sup>29</sup> / <sub>32</sub> " Dia.	50	37
<b>TP516</b>	For One Duplex Receptacle	50	31
<b>TP509 (4 Screws), TP518 (2 Screws)</b>	For One 30-60 Amp Receptacle (4-wire) 2 <sup>7</sup> / <sub>16</sub> " Dia.	50	23
<b>TP518</b>	For One 30-50 Amp Receptacle 2 <sup>9</sup> / <sub>64</sub> " Dia.	50	34
<b>TP513</b>	For One GFCI Receptacle	50	31
<b>TP511</b>	For Two GFCI Receptacles	50	26
<b>TP515</b>	For One Toggle Switch and One GFCI Receptacle	50	31
<b>TP517</b>	For One Duplex Receptacle and One GFCI Receptacle	50	26

# Steel Square Covers

## UNI-MOUNT™ COVERS

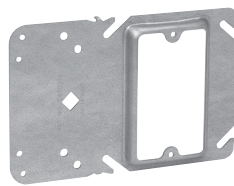
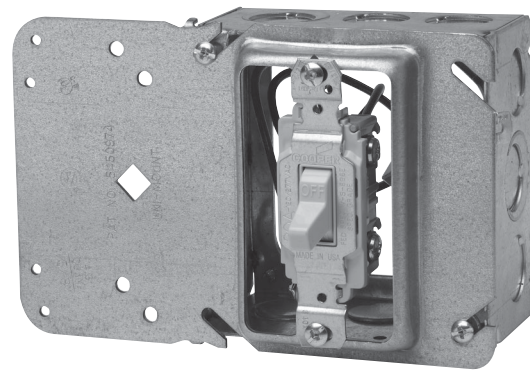
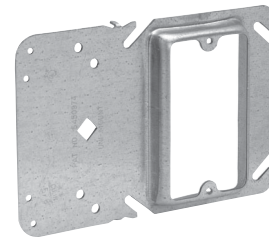
The Uni-Mount combines the features of a mounting device plate with those of a box support, giving you one universal plate for all of your needs. Specifically designed for use with metal or wood studs:

The new and improved version incorporates four small holes on the left side (support side) of the bracket. These holes allow for the attachment of box mounting brackets to allow for use of both sides of the stud. The holes are strategically located to accept either the Eaton's B-Line Series BB423 bracket or the Caddy H23 bracket. Additionally, the viewing hole has been significantly enlarged (and is now diamond shaped) to make it even easier to find mark lines on the stud.

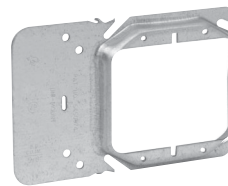
### Features:

- Guide tabs ensure consistent alignment on stud
- Stud alignment hole ensures consistent mounting height
- Rigid bracket design eliminates the need for far side support
- Available as a single or two device cover
- Universal design fits all 4" square boxes
- Available in 1/2", 5/8" and 3/4" raised
- Can be ordered pre-assembled to popular 4" square boxes
- Fast and easy installation
- Can be used in multiple applications, resulting in less items to stock
- Less labor intensive
- Less material handling
- No multiple assemblies to handle
- Can be used in Class II communications outlets for low voltage without a box
- UL Listed and CSA certified\*
- UL File No. E-23156

\*CSA requires a far side support.



Single Gang

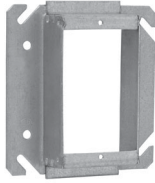


Two Gang

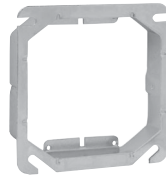
Cat. #	Description	Capacity Cu. In.	Unit Qty.	Wt. Lbs. Per 100
<b>Single Gang</b>				
TP30000	1/2" Raised	3.8	50	43
TP31000	5/8" Raised	4.3	50	46
TP32000	3/4" Raised	5.5	50	50
<b>Two Gang</b>				
TP35000	1/2" Raised	6.0	50	38
TP36000	5/8" Raised	8.0	50	52
TP37000	3/4" Raised	9.0	50	54
<b>Low Profile Screws – Reduces Risk of Sheetrock Bulge</b>				
TP710	L.P. Screws	-	1000	0.5

# Steel Square Covers

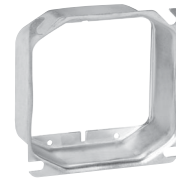
## TILE WALL COVERS FOR 4" SQUARE BOXES – CUBIC INCH CAPACITY (SEE BELOW) UL LISTED



TP524



TP534



TP540

### Applications:

- Typically used with tile or brick

### Features:

- Rounded corners help guide cuts around devices

Cat. #	Description	Capacity Cu. In.	Unit Qty.	Wt. Lbs. Per 100
<b>One Device</b>				
TP520	1/2" Raised	3.7	50	30
TP522	3/4" Raised	5.5	50	36
TP524	1" Raised	7.4	50	40
TP526	1 1/4" Raised	9.3	25	46
TP528	1 1/2" Raised	11.0	25	50
TP530	2" Raised	14.8	25	62
<b>Two Device</b>				
TP532	1/2" Raised	5.0	10	24
TP534	3/4" Raised	7.8	10	30
TP536	1" Raised	10.3	10	36
TP538	1 1/4" Raised	13.0	10	44
TP540	1 1/2" Raised	15.5	10	50
TP542	2" Raised	20.8	10	66

## 4" SQUARE BOX PARTITIONS



TP860



TP861



TP862



TP863

Cat. #	Description	Unit Qty.	Wt. Lbs. Per 100
<b>For 1 1/2" Deep Box with Square Cut Tile Wall Two Gang Covers</b>			
TP860	For 1/2", 3/4", 1" Raised Covers	25	13
TP861	For 1 1/4", 1 1/2", 2" Raised Covers	25	18
<b>For 2 1/2" Deep Box with Square Cut Tile Wall Two Gang Covers</b>			
TP862	For 1/2", 3/4", 1" Raised Covers	25	16
TP863	For 1 1/4", 1 1/2", 2" Raised Covers	25	21

Steel Boxes