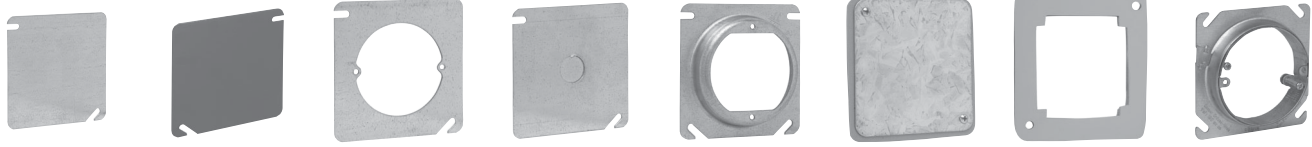


Steel Square Covers

COVERS FOR 4" SQUARE BOXES – CUBIC INCH CAPACITY (SEE BELOW)

UL LISTED

#8-32 Screw Used on Covers



TP472 TP472RED TP474 TP478 TP473, TP475, TP476, TP477, TP479, TP483 TP850* TP854* AMR0

Cat. #	Description	Unit Qty.	Wt. Lbs. Per 100	Capacity Cu. In.
TP472†	Flat Blank	50	31	-
TP472RED	Flat Blank, Red	50	31	-
TP474†	Flat, Open with Ears 2 ³ / ₄ "	50	21	-
TP478†	Flat, with 1/2" KO	50	31	-
TP487†	Flat, with 3/4" KO	50	29	-
TP473†	Raised 1/4", Open with Ears 2 ³ / ₄ "	50	23	1.3
TP476†	Raised 1/2", Open with Ears 2 ³ / ₄ "	50	26	4.0
TP477†	Raised 5/8", Open with Ears 2 ³ / ₄ "	50	27	5.0
TP475†	Raised 3/4", Open with Ears 2 ³ / ₄ "	25	31	6.0
TP479†	Raised 1", Open with Ears 2 ³ / ₄ "	25	34	7.0
TP483†	Raised 1 1/4", Open with Ears 2 ³ / ₄ "	25	37	8.5
AMR0**	3/4" - 1 1/2" Round Adjustable Mud Ring	25	44	6.1

Air Plenum

TP850*	Flat Blank Gasketed with Captive Screws	25	31	-
TP854*	Flat Ring Double Gasketed	25	12	-

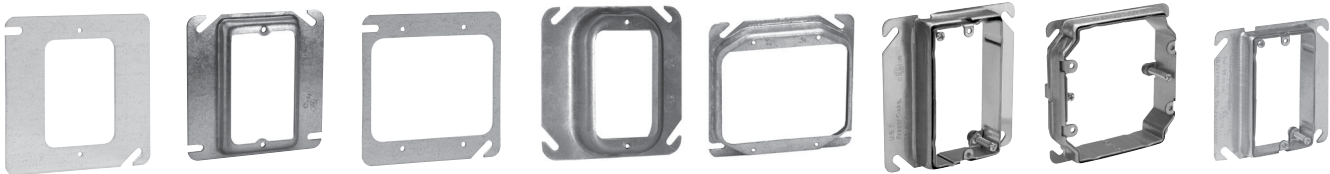
*For Air Plenum (no mounting holes) - not UL Listed.

**ETL listed.

†CSA certified.

MUD RINGS FOR 4" SQUARE STEEL OUTLET BOXES

UL LISTED



TP480 TP482, TP484, TP486, TP489 TP494 TP488, TP490 TP496, TP499, TP500, TP501, TP502 AMR1 AMR2 AMR158

Cat. #	Description	Unit Qty.	Wt. Lbs. Per 100	Capacity Cu. In.
One Device				
TP480†	Flat	50	20	-
TP482†	1/4" Raised	50	21	1.8
TP484†	1/2" Raised	50	23	3.8
TP489†	5/8" Raised	50	26	4.3
TP486†	3/4" Raised	50	30	5.5
TP488	1" Raised	50	34	6.8
TP490	1 1/4" Raised	25	39	8.5
AMR1**	3/4" - 1 1/2" Raised Adjustable	25	47	-
AMR158**	5/8" - 1 1/4" Raised Adjustable	25	44	6.0
Two Device				
TP494†	Flat	50	12	-
TP496†‡	1/4" Raised	50	13	3.0
TP498†‡	1/2" Raised	50	18	6.0
TP499†‡	5/8" Raised	50	22	8.0
TP500†‡	3/4" Raised	50	24	9.0
TP501	1 1/4" Raised	25	31	14.0
TP502	1" Raised	25	30	11.7
AMR2**	5/8" - 1 1/2" Raised Adjustable	25	50	11.3

**cULus Listed.

†CSA certified.

‡Slotted design for use with 4" square box partitions.

Steel Square Covers

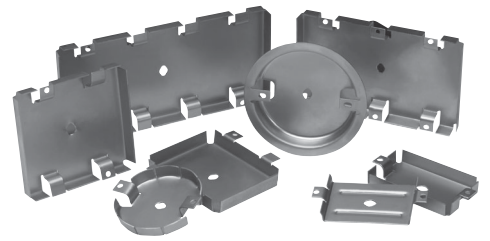
METALGUARD™ PROTECTIVE PLATES

Applications:

- For use with single, two, three and four gang commercial or residential boxes/plaster rings; with or without devices, switches, GFCI, etc. installed
- Commercial or residential ceiling boxes

Features:

- Seals out sheetrock mud, sanding dust and paint overspray to keep the electrical box and its wiring free from contaminants
- Heavy duty reusable metallic plate provides mechanical protection to box and wiring and speeds up trim process
- Easy to install; all you have to do is push them in; they come out easy – just put a screwdriver into the slot in front, turn and pull them out
- Reduces risk of callbacks and expense of rework because of wire and box damage
- MetalGuard serves as a guide for router in cutting out boxes



Standard Material & Finish:

- 18 gauge steel
- Natural finish

Cat. #	Description	Unit Qty.	Wt. Lbs. Per 100
MGRK	Contractor Kit (120-1G, 40-2G, 20-3G, 5-4G, and 20-Rnd)	1	33.00
MGR1	1G Residential Wire Protector	60	8.20
MGR2	2G Residential Wire Protector	20	4.80
MGR4	4G Residential Wire Protector	5	3.00
MGR0	Rnd Residential Wire Protector	20	4.00
MGMR1	1G Wire Protector for Commercial MR	50	6.55
MGMR2	2G Wire Protector for Commercial MR	50	10.25
MGMRO	Rnd Wire Protector for Commercial MR	50	6.00

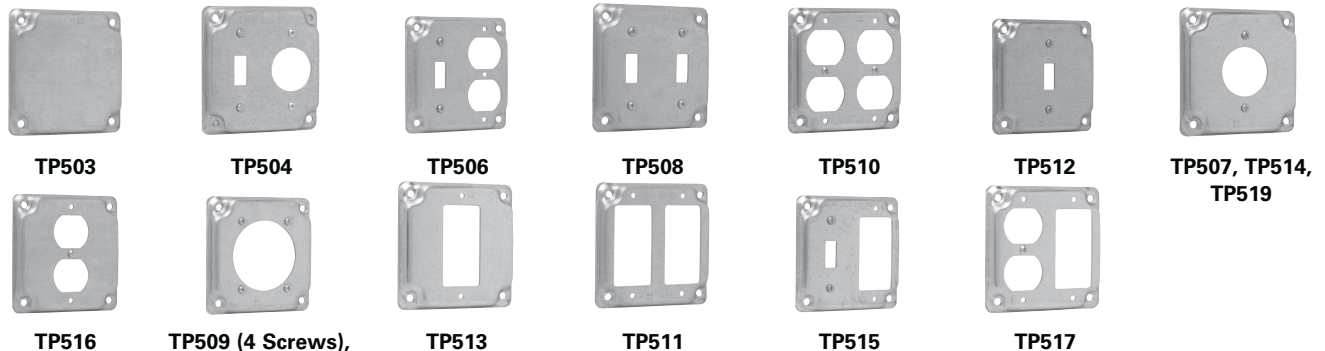
4" SQUARE SURFACE COVERS – 5.5 CUBIC INCH CAPACITY

RAISED 1/2"

UL LISTED

CSA LISTED

Screw(s) provided in raised cover kit are for use with the center hole on duplex receptacles. Nuts that are provided in kit are to be used in conjunction with the screws that are provided as standard packaging with devices to mount device to raised cover. For GFCI device installation, no screw is needed; please disregard.



Cat. #	Description	Unit Qty.	Wt. Lbs. Per 100
TP503	Raised Blank	50	35
TP504	For One Toggle Switch and One Single Receptacle 1 ¹³ / ₃₂ " Dia.	50	31
TP506	For One Toggle Switch and One Duplex Receptacle	50	31
TP508	For Two Toggle Switches	50	35
TP510	For Two Duplex Receptacles	50	26
TP512	For One Toggle Switch	50	35
TP507	For One 20 Amp Single Receptacle 1 ¹⁹ / ₃₂ " Dia.	50	37
TP514	For One Single Receptacle 1 ¹³ / ₃₂ " Dia.	50	34
TP519	For One 30 Amp Twist-Lock Single Receptacle 1 ²⁹ / ₃₂ " Dia.	50	37
TP516	For One Duplex Receptacle	50	31
TP509 (4 Screws), TP518 (2 Screws)	For One 30-60 Amp Receptacle (4-wire) 2 ⁷ / ₁₆ " Dia.	50	23
TP518	For One 30-50 Amp Receptacle 2 ⁹ / ₆₄ " Dia.	50	34
TP513	For One GFCI Receptacle	50	31
TP511	For Two GFCI Receptacles	50	26
TP515	For One Toggle Switch and One GFCI Receptacle	50	31
TP517	For One Duplex Receptacle and One GFCI Receptacle	50	26

Steel Square Covers

UNI-MOUNT™ COVERS

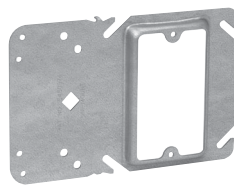
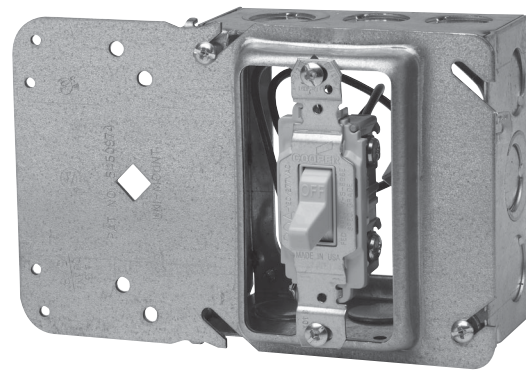
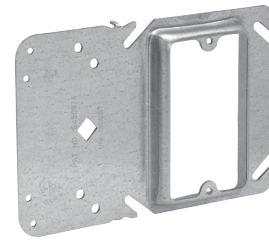
The Uni-Mount combines the features of a mounting device plate with those of a box support, giving you one universal plate for all of your needs. Specifically designed for use with metal or wood studs:

The new and improved version incorporates four small holes on the left side (support side) of the bracket. These holes allow for the attachment of box mounting brackets to allow for use of both sides of the stud. The holes are strategically located to accept either the Eaton's B-Line Series BB423 bracket or the Caddy H23 bracket. Additionally, the viewing hole has been significantly enlarged (and is now diamond shaped) to make it even easier to find mark lines on the stud.

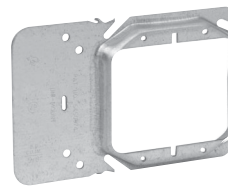
Features:

- Guide tabs ensure consistent alignment on stud
- Stud alignment hole ensures consistent mounting height
- Rigid bracket design eliminates the need for far side support
- Available as a single or two device cover
- Universal design fits all 4" square boxes
- Available in 1/2", 5/8" and 3/4" raised
- Can be ordered pre-assembled to popular 4" square boxes
- Fast and easy installation
- Can be used in multiple applications, resulting in less items to stock
- Less labor intensive
- Less material handling
- No multiple assemblies to handle
- Can be used in Class II communications outlets for low voltage without a box
- UL Listed and CSA certified*
- UL File No. E-23156

*CSA requires a far side support.



Single Gang

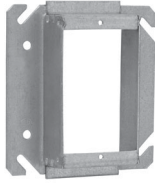


Two Gang

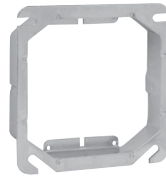
Cat. #	Description	Capacity Cu. In.	Unit Qty.	Wt. Lbs. Per 100
Single Gang				
TP30000	1/2" Raised	3.8	50	43
TP31000	5/8" Raised	4.3	50	46
TP32000	3/4" Raised	5.5	50	50
Two Gang				
TP35000	1/2" Raised	6.0	50	38
TP36000	5/8" Raised	8.0	50	52
TP37000	3/4" Raised	9.0	50	54
Low Profile Screws – Reduces Risk of Sheetrock Bulge				
TP710	L.P. Screws	-	1000	0.5

Steel Square Covers

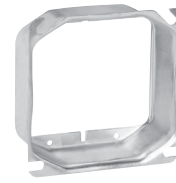
TILE WALL COVERS FOR 4" SQUARE BOXES – CUBIC INCH CAPACITY (SEE BELOW) UL LISTED



TP524



TP534



TP540

Applications:

- Typically used with tile or brick

Features:

- Rounded corners help guide cuts around devices

Cat. #	Description	Capacity Cu. In.	Unit Qty.	Wt. Lbs. Per 100
One Device				
TP520	1/2" Raised	3.7	50	30
TP522	3/4" Raised	5.5	50	36
TP524	1" Raised	7.4	50	40
TP526	1 1/4" Raised	9.3	25	46
TP528	1 1/2" Raised	11.0	25	50
TP530	2" Raised	14.8	25	62
Two Device				
TP532	1/2" Raised	5.0	10	24
TP534	3/4" Raised	7.8	10	30
TP536	1" Raised	10.3	10	36
TP538	1 1/4" Raised	13.0	10	44
TP540	1 1/2" Raised	15.5	10	50
TP542	2" Raised	20.8	10	66

4" SQUARE BOX PARTITIONS



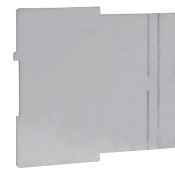
TP860



TP861



TP862



TP863

Cat. #	Description	Unit Qty.	Wt. Lbs. Per 100
For 1 1/2" Deep Box with Square Cut Tile Wall Two Gang Covers			
TP860	For 1/2", 3/4", 1" Raised Covers	25	13
TP861	For 1 1/4", 1 1/2", 2" Raised Covers	25	18
For 2 1/2" Deep Box with Square Cut Tile Wall Two Gang Covers			
TP862	For 1/2", 3/4", 1" Raised Covers	25	16
TP863	For 1 1/4", 1 1/2", 2" Raised Covers	25	21

Steel Boxes