

STEEL Recessed TV Box for Use with Metal Raceway

TV BOX

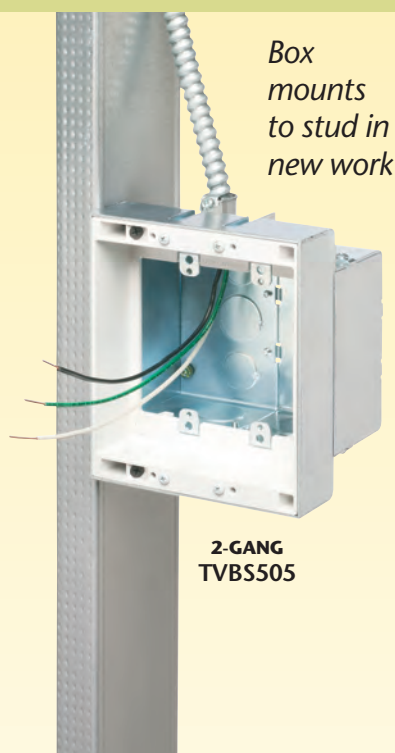
RECESSED POWER & LOW VOLTAGE COMBO BOXES

Designed for use in commercial and other construction where metal raceway is used, Arlington's STEEL combination TV BOX™ provides power and/or low voltage in one or more of the openings.

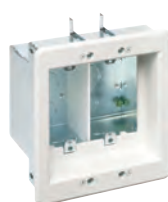
The recessed design of these steel boxes keeps plugs and connectors inside the box. Connections don't extend past the wall, so flat screen TVs mount flush against a wall.

TV BOX is available in 2-, 3- and 4-gang styles.

- Steel box with non-metallic paintable white trim plate
- Easy to install, secure installation
- Mounting wings on two- and three-gang styles hold boxes securely against the wall in retrofit projects
- Boxes screw-mount to stud in new construction
- Optional cover for unused boxes
- cULus Listed



In old work mounting wings secure box in wall



2-GANG
(voltage separator shown installed)
TVBS505



COVERS
for TVBS505
(2-gang) box



White cover
DVFR



Patented. Other Patents Pending.

Recessed Power and Low Voltage Electrical Boxes for Flat Screen TVs

STEEL

Steel TV BOX™ Installation (2-gang TVBS505) – Existing Construction



Mounting wings hold 2- and 3-gang boxes securely in wall.



2 Pull cable. Insert box in hole. Tighten mounting wing screws to hold box securely against wall.

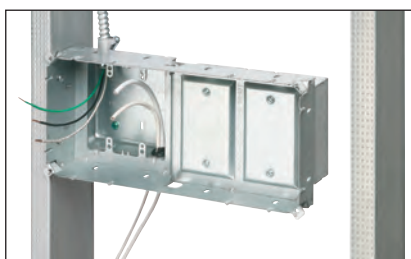


Note Install voltage separator for power and low voltage.



3 Install devices, then the wall plates.

Steel TV BOX™ Installation (4-gang TVBS613) – New Construction



1 Attach box to stud. Pull wire.



2 After drywall is installed, add trim plate, then install enclosure assembly to the wall with outer screws.



3 Install voltage separator.



4 Install devices and plates.



TVB613C
Non-metallic cover
for TVBS613



View Video



Steel TV Box

CATALOG NUMBER	UPC/DCI/NAED MFG. #018997	DESCRIPTION	UNIT PKG	STD PKG
TVBS505	37955	2-gang, steel box w/ white non-metallic trim plate	1	4
TVBS507	37956	3-gang, steel box w/ white non-metallic trim plate	1	4
TVBS613	09633	2-gang, steel, power/low voltage (white trim plate) (Plus two low voltage mounts)	1	1
DVFR	14337	White non-metallic blank cover for 2-gang TVBS505	10	10
TVB613C	09631	White non-metallic blank cover for 13" TVBS613	5	5

Patented. Other Patents Pending.

Steel TV BOX™



TVBS613

STEEL Recessed TV Box for Use with Metal Raceway

TV BOX

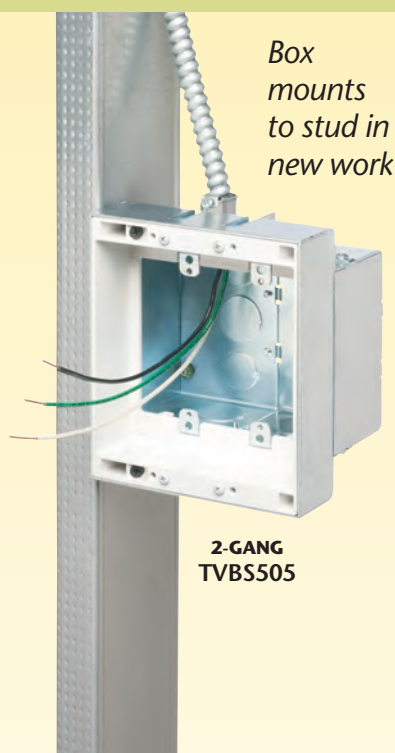
RECESSED POWER & LOW VOLTAGE COMBO BOXES

Designed for use in commercial and other construction where metal raceway is used, Arlington's STEEL combination TV BOX™ provides power and/or low voltage in one or more of the openings.

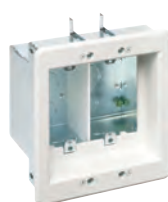
The recessed design of these steel boxes keeps plugs and connectors inside the box. Connections don't extend past the wall, so flat screen TVs mount flush against a wall.

TV BOX is available in 2-, 3- and 4-gang styles.

- Steel box with non-metallic paintable white trim plate
- Easy to install, secure installation
- Mounting wings on two- and three-gang styles hold boxes securely against the wall in retrofit projects
- Boxes screw-mount to stud in new construction
- Optional cover for unused boxes
- cULus Listed



In old work mounting wings secure box in wall



2-GANG
(voltage separator shown installed)
TVBS505



COVERS
for TVBS505
(2-gang) box



White cover
DVFR



Patented. Other Patents Pending.

Recessed Power and Low Voltage Electrical Boxes for Flat Screen TVs

STEEL

Steel TV BOX™ Installation (2-gang TVBS505) – Existing Construction



Mounting wings hold 2- and 3-gang boxes securely in wall.



- 2** Pull cable. Insert box in hole. Tighten mounting wing screws to hold box securely against wall.

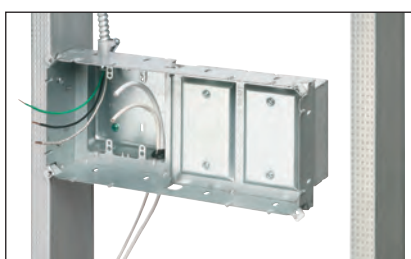


Note Install voltage separator for power and low voltage.



- 3** Install devices, then the wall plates.

Steel TV BOX™ Installation (4-gang TVBS613) – New Construction



- 1** Attach box to stud. Pull wire.



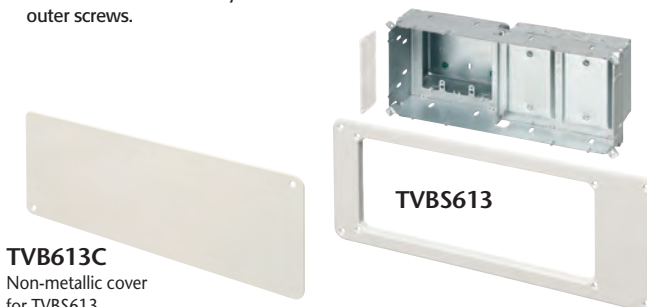
- 2** After drywall is installed, add trim plate, then install enclosure assembly to the wall with outer screws.



- 3** Install voltage separator.



- 4** Install devices and plates.



TVBS613
Non-metallic cover for TVBS613

View Video



Steel TV Box

CATALOG NUMBER	UPC/DCI/NAED MFG. #018997	DESCRIPTION	UNIT PKG	STD PKG
TVBS505	37955	2-gang, steel box w/ white non-metallic trim plate	1	4
TVBS507	37956	3-gang, steel box w/ white non-metallic trim plate	1	4
TVBS613	09633	2-gang, steel, power/low voltage (white trim plate) (Plus two low voltage mounts)	1	1
DVFR	14337	White non-metallic blank cover for 2-gang TVBS505	10	10
TVBS613C	09631	White non-metallic blank cover for 13" TVBS613	5	5

Patented. Other Patents Pending.

Steel TV BOX™



TVBS613