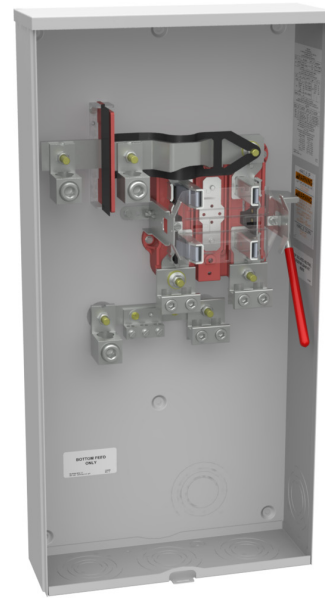




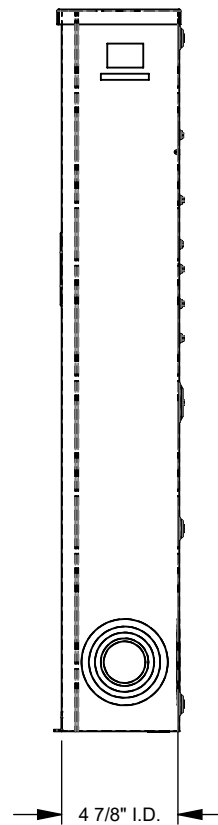
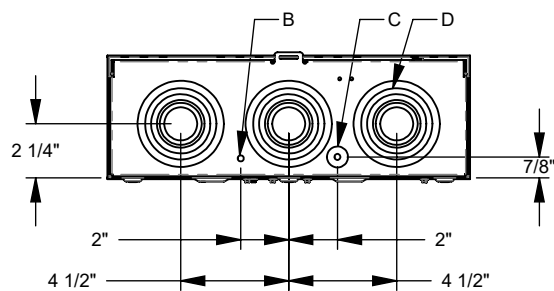
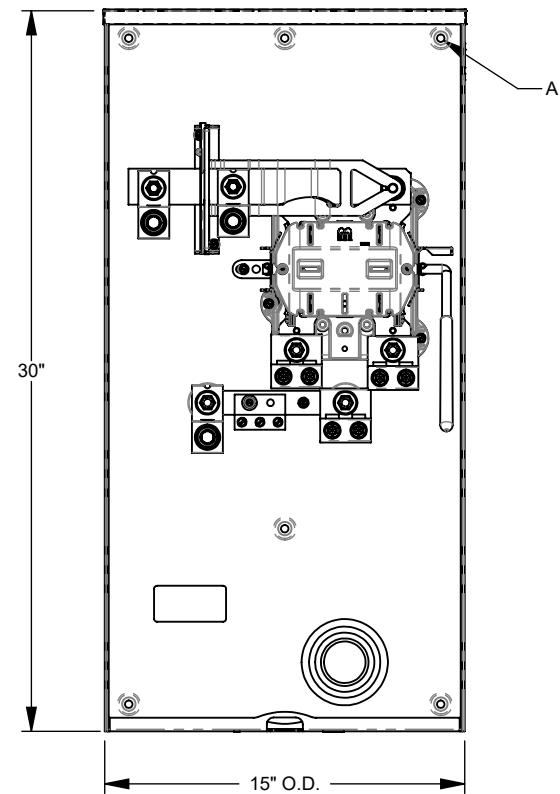
MILBANK
ENERGY AT WORK

U1797-O-K3L-K2L

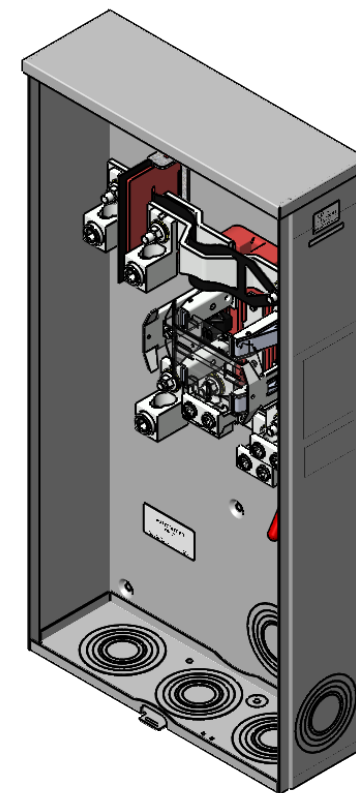


Catalog Number	U1797-O-K3L-K2L	Mounting	Surface Mount
Marketing Product Description	4 Terminal Ringless Plain Top Lever Bypass Single Connector Locking 4-600kcmil Double Connector Locking 6-350kcmil	Enclosure	G90 Galvanized Steel with Powder Coat Finish
UPC	784572301726	Jaw Quantity	4 Terminal
Length (IN)	4.844	Bypass Type	Lever Bypass
Width (IN)	15	Number of Meter Positions	1 Position
Height (IN)	30	Equipment Ground	3 Barrel Ground Lug
Brand Name	Milbank	Hub Opening	Plain Top
Type	Ringless Meter Socket	Line Side Wire Range	4 AWG - 600 kcmil or Two 1/0 AWG - 250 kcmil
Application	Meter Socket	Load Side Wire Range	Two 6 AWG - 350 kcmil
Standard	UL Listed;Type 3R	Number Of Receptacles	0
Voltage Rating	600 Volts Alternating Current		
Amperage Rating	320 Continuous Ampere		
Phase	1 Phase		
Frequency Rating	60 Hertz		
Size	4.844L x 15W x 30H		
Number Of Cutouts	0		
Cutout Size	No Main Breaker		
Cable Entry	Underground		
Terminal	Single Mechanical		
Insulation	Glass Polyester		

Please consult serving utility for their requirements prior to ordering or installing, as specifications and approvals vary by utility and may require local electrical inspector approval. All installations must be installed by a licensed electrician and must comply with all national and local codes, laws and regulations. Milbank reserves the right to make changes in specifications and features shown without notice or obligation.



FEATURE TABLE		
ITEM	QTY	DESCRIPTION
A	6	STD. MNTG. EMBOSS
B	1	1/4 SOLID K.O.
C	1	1/4, 1/2 CONC. K.O.
D	5	1, 1 1/4, 1 1/2, 2, 2 1/2, 3 CONC. K.O.



Version:

1

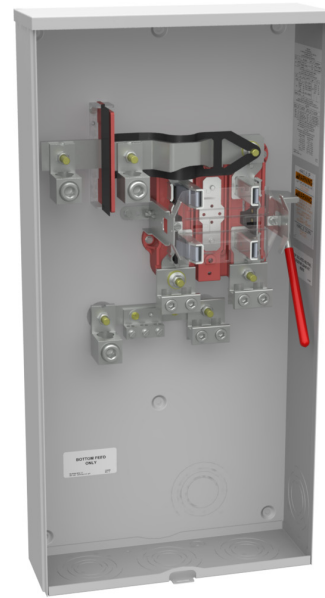
**All dimensions are +/- 1/16".
Drawing views are not to scale.**

Please consult serving utility for their requirements prior to ordering or installing, as specifications and approvals vary by utility, and may require local electrical inspector approval. All installations must be installed by a licensed electrician and must comply with all national and local codes, laws and regulations. Milbank reserves the right to make changes in specifications and features shown without notice or obligation.



MILBANK
ENERGY AT WORK

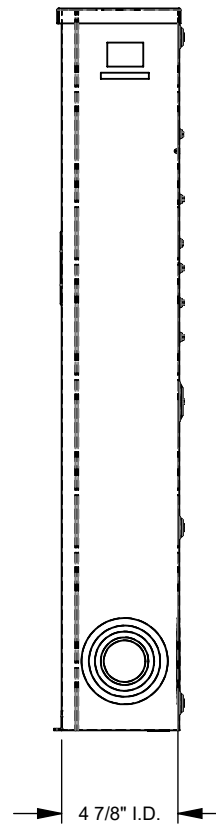
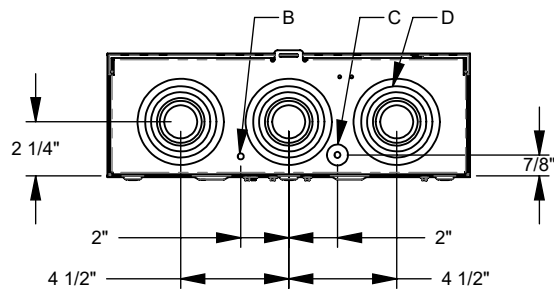
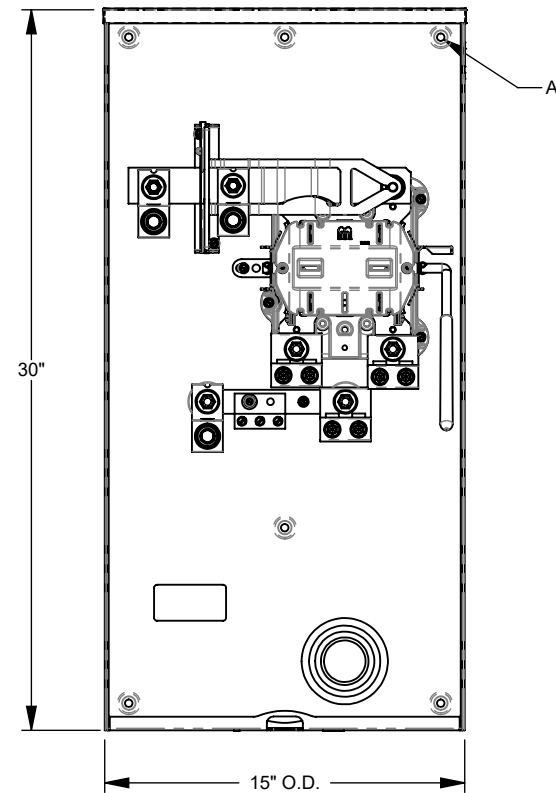
U1797-O-K3L-K2L



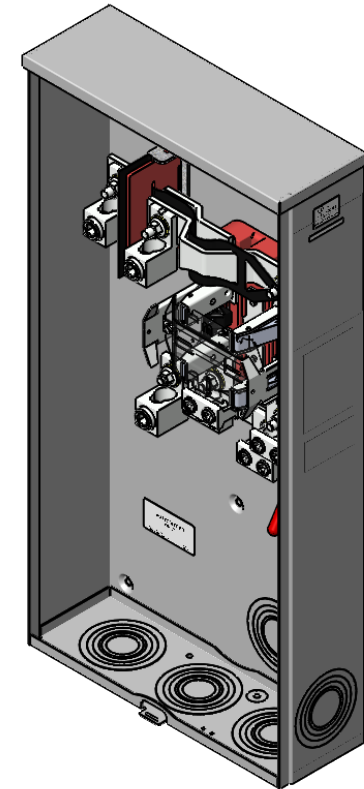
Catalog Number	U1797-O-K3L-K2L
Marketing Product Description	4 Terminal Ringless Plain Top Lever Bypass Single Connector Locking 4-600kcmil Double Connector Locking 6-350kcmil
UPC	784572301726
Length (IN)	4.844
Width (IN)	15
Height (IN)	30
Brand Name	Milbank
Type	Ringless Meter Socket
Application	Meter Socket
Standard	UL Listed;Type 3R
Voltage Rating	600 Volts Alternating Current
Amperage Rating	320 Continuous Ampere
Phase	1 Phase
Frequency Rating	60 Hertz
Size	4.844L x 15W x 30H
Number Of Cutouts	0
Cutout Size	No Main Breaker
Cable Entry	Underground
Terminal	Single Mechanical
Insulation	Glass Polyester

Mounting	Surface Mount
Enclosure	G90 Galvanized Steel with Powder Coat Finish
Jaw Quantity	4 Terminal
Bypass Type	Lever Bypass
Number of Meter Positions	1 Position
Equipment Ground	3 Barrel Ground Lug
Hub Opening	Plain Top
Line Side Wire Range	4 AWG - 600 kcmil or Two 1/0 AWG - 250 kcmil
Load Side Wire Range	Two 6 AWG - 350 kcmil
Number Of Receptacles	0

Please consult serving utility for their requirements prior to ordering or installing, as specifications and approvals vary by utility and may require local electrical inspector approval. All installations must be installed by a licensed electrician and must comply with all national and local codes, laws and regulations. Milbank reserves the right to make changes in specifications and features shown without notice or obligation.



FEATURE TABLE		
ITEM	QTY	DESCRIPTION
A	6	STD. MNTG. EMBOSS
B	1	1/4 SOLID K.O.
C	1	1/4, 1/2 CONC. K.O.
D	5	1, 1 1/4, 1 1/2, 2, 2 1/2, 3 CONC. K.O.



Version:

1

**All dimensions are +/- 1/16".
Drawing views are not to scale.**

Please consult serving utility for their requirements prior to ordering or installing, as specifications and approvals vary by utility, and may require local electrical inspector approval. All installations must be installed by a licensed electrician and must comply with all national and local codes, laws and regulations. Milbank reserves the right to make changes in specifications and features shown without notice or obligation.