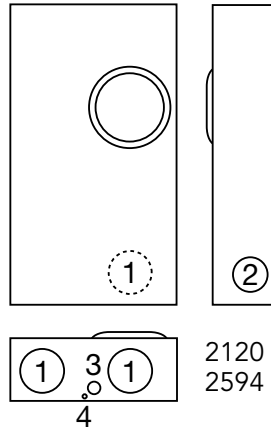


Link & Lever Bypass Single Position

320 amp | 4 & 7 Terminal | Ringless



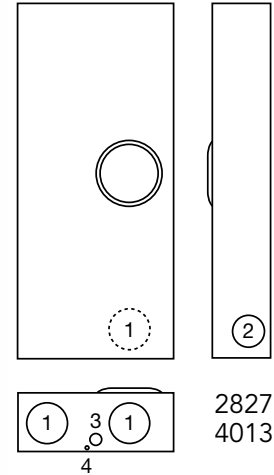
U2120-X



2120
2594



U2827-X



2827
4013

320 amp | 7 Terminal | Ringless | Lever Bypass | Single Position | Side Wireway

Catalog Number	Terminal	Service	Hub	Connectors CU/AL		Bypass	Dimensions			Knockouts			
				Line	Load		D"	W"	H"	1	2	3	4
U2120-X	7	UG	C.P.	3/8"x16 Studs		Lever	6 1/2	17 3/4	31 3/4	4	3	1	1/4
U4013-X	7	OH/UG	C.P.	3/8"x16 Studs		Lever	6 1/2	19	34 1/8	4	3	1	1/4
U2594-X	7	OH/UG	C.P.	3/8"x16 Studs		Lever	6 1/2	19 3/4	34 1/8	4	3	1	1/4
U2827-X*	7	OH/UG	C.P.	3/8"x16 Studs		non-bypass	6 1/2	17 3/4	31	4	3	1	1/4

Notes

- **Bypass:** Lever supplies clamping action on meter spades and operates bypass device. *U2827 has lever with jaw clamping capabilities but no bypass.
- **Connector Kits:** Stud type units are supplied with 3/8"x16 hex head nuts with Belleville washers. Order two connector kits to cover both line and load. For single lug connector kits for the U2120 and U2594 units, order as extra K3082 (350 kcmil) or K3441 (600 kcmil). For twin lug connectors order as extra: K3442 (350 kcmil). Separate kits are required for both line and load.



Utility requirements for this equipment may vary. Always consult the serving utility for their requirements prior to ordering or installing this equipment. This product must be installed by a licensed electrician. Installation of this equipment may require local electrical inspector approval.