

# 5F Unions and Elbows

Cl. I, Div. 1 & 2, Groups A, B, C, D†  
 Cl. II, Div. 1, Groups E, F, G  
 Cl. II, Div. 2, Groups F, G  
 Cl. III  
 Explosionproof  
 Dust-Ignitionproof

5F

## Applications:

- UNY and UNF unions are installed in threaded thickwall conduit systems:
- UNY – to connect conduit to a conduit fitting, junction box or device enclosure
  - UNF – to connect conduit to conduit, or to provide a means for future modification of the conduit system

UNA unions are used in conduit and fitting installations when entrance angle is between 90° and 180°.

EL elbows are installed in conduit run or in box or fitting hub:

- To change direction in threaded rigid conduit run by 90°, or when terminating at a box or fitting

## Features:

- UNY, UNF and UNL unions have:
- Compact design which permits assembly with a minimum of clearance to other adjacent conduit and/or equipment
  - Strong and durable construction
- UNA unions:
- Have a single clamping nut on angle, making it both a union and a connector
  - Permit conduit joints at angles between 90° and 180°
- EL elbows have a smooth interior and are both strong and compact.

## Certifications and Compliances:

- NEC/CEC:

Class I, Division 1 & 2, Groups A, B, C, D
Class II, Division 1, Groups E, F, G
Class II, Division 2, Groups F, G
Class III
EL ½", ¾", 1"
UNF/UNY 105, -215, -205, -305
UNL 105, -125, -215, -205

Class I, Division 1 & 2, Groups B, C, D
Class II, Division 1, Groups E, F, G
Class II, Division 2, Groups F, G
Class III
UNF/UNY406, -506, -606, -706, -806, -905, -1005

Class I, Division 1 & 2, Groups C, D
Class II, Division 1, Groups E, F, G
Class II, Division 2, Groups F, G
Class III
EL, UNF, UNL, UNY - all sizes

Class I, Division 1 & 2, Group D
Class II, Division 1, Groups E, F, G
Class II, Division 2, Groups F, G
Class III
UNA

- UL Standard: 1203
- CSA Standard: C22.2 No. 30

†See compliances for classification of each product.

## Standard Materials:

- UNY, UNF unions – ½" to 1" – steel
- UNY, UNF unions – 1¼" to 6" – *Feraloy*® iron alloy
- UNL, UNA unions – *Feraloy* iron alloy
- EL elbows – *Feraloy* iron alloy or ductile iron

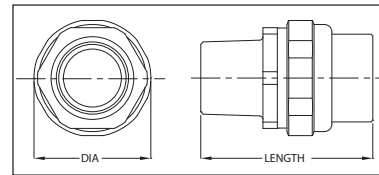
## Standard Finishes:

- Steel – electrogalvanized with chromate treatment
- *Feraloy* iron alloy, malleable iron – electrogalvanized and aluminum acrylic paint

## Options:

Description	Suffix
Copper-free aluminum	SA
Not available on UNA or 5" and 6" UNY/UNF	

## UNY



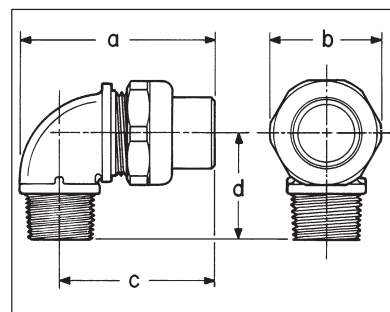
## UNL



## 90° Angle

Size	Cat. #
½ to ½	UNL105
¾ female to ½ male	UNL125
½ female to ¾ male	UNL215
¾ to ¾	UNL205

## Dimensions In Inches:



Size	Cat. #	Size	Cat. #
½	UNY105	½	UNF105
½ female to ¾ male	UNY215	¾ to ½	UNF215
¾	UNY205	¾	UNF205
1	UNY305	1	UNF305
1¼	UNY405	1¼	UNF405
1¼	UNY406	1¼	UNF406
1½	UNY505	1½	UNF505
1½	UNY506	1½	UNF506
2	UNY605	2	UNF605
2	UNY606	2	UNF606
2½	UNY705	2½	UNF705
2½	UNY706	2½	UNF706
3	UNY805	3	UNF805
3	UNY806	3	UNF806
3½	UNY905	3½	UNF905
4	UNY1005	4	UNF1005
5	UNY012	5	UNF012
6	UNY014	6	UNF014

UNY			UNF	
Size	Length	Max. Dia.	Length	Max. Dia.
½	2 <sup>5</sup> / <sub>16</sub>	1½	1 <sup>13</sup> / <sub>16</sub>	1½
¾ - ½	2 <sup>11</sup> / <sub>16</sub>	1 <sup>13</sup> / <sub>16</sub>	1¾	1 <sup>13</sup> / <sub>16</sub>
¾	2 <sup>11</sup> / <sub>16</sub>	1 <sup>13</sup> / <sub>16</sub>	1¾	1 <sup>13</sup> / <sub>16</sub>
1	3	1 <sup>7</sup> / <sub>8</sub>	2	1 <sup>7</sup> / <sub>8</sub>
1¼	3 <sup>1</sup> / <sub>16</sub>	2¾	2¼	2¾
1½	4¼	3 <sup>1</sup> / <sub>16</sub>	2 <sup>5</sup> / <sub>8</sub>	3 <sup>1</sup> / <sub>16</sub>
2	4¼	3 <sup>13</sup> / <sub>16</sub>	2 <sup>9</sup> / <sub>16</sub>	3 <sup>13</sup> / <sub>16</sub>
2½	5 <sup>7</sup> / <sub>16</sub>	4 <sup>5</sup> / <sub>16</sub>	3 <sup>3</sup> / <sub>16</sub>	4 <sup>5</sup> / <sub>16</sub>
3	5¾	5 <sup>1</sup> / <sub>16</sub>	3 <sup>7</sup> / <sub>16</sub>	5 <sup>1</sup> / <sub>16</sub>
3½	6 <sup>1</sup> / <sub>2</sub>	5 <sup>11</sup> / <sub>16</sub>	4 <sup>7</sup> / <sub>8</sub>	5 <sup>1</sup> / <sub>16</sub>
4	6 <sup>9</sup> / <sub>16</sub>	6 <sup>3</sup> / <sub>16</sub>	4 <sup>7</sup> / <sub>8</sub>	6 <sup>3</sup> / <sub>16</sub>
5	6 <sup>1</sup> / <sub>8</sub>	8 <sup>3</sup> / <sub>16</sub>	3 <sup>13</sup> / <sub>16</sub>	8 <sup>3</sup> / <sub>16</sub>
6	6 <sup>1</sup> / <sub>8</sub>	9 <sup>5</sup> / <sub>16</sub>	3 <sup>13</sup> / <sub>16</sub>	9 <sup>5</sup> / <sub>16</sub>

UNL				
Dim.	105	125	215	205
a	2 <sup>11</sup> / <sub>16</sub>	2 <sup>11</sup> / <sub>16</sub>	2 <sup>7</sup> / <sub>8</sub>	2 <sup>7</sup> / <sub>8</sub>
b	1 <sup>17</sup> / <sub>32</sub>	1 <sup>13</sup> / <sub>16</sub>	1 <sup>13</sup> / <sub>16</sub>	1 <sup>13</sup> / <sub>16</sub>
c	2 <sup>1</sup> / <sub>16</sub>	2 <sup>1</sup> / <sub>16</sub>	2 <sup>1</sup> / <sub>4</sub>	2 <sup>1</sup> / <sub>4</sub>
d	1 <sup>7</sup> / <sub>16</sub>	1 <sup>7</sup> / <sub>16</sub>	1 <sup>5</sup> / <sub>8</sub>	1 <sup>5</sup> / <sub>8</sub>

# Unions and Elbows

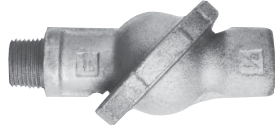
Cl. I, Div. 1 & 2, Groups C, D†  
 Cl. II, Div. 1, Groups E, F, G  
 Cl. II, Div. 2, Groups F, G  
 Cl. III

Explosionproof  
 Dust-Ignitionproof

**5F**



## UNA



Male (with removable nipple)

Male Size	Cat. #
1/2	UNA16
3/4	UNA26
1	UNA36

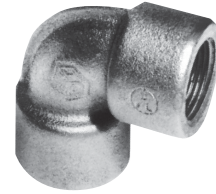
## EL



90° Male



45° Female



90° Female



90° Male and female

### 90° Male

Size	Cat. #
1/2	EL195
3/4	EL295
1	EL395

### 45° Female

Size	Cat. #
1/2	EL1
3/4	EL2
1	EL3
1 1/4	EL4
1 1/2	EL5
2	EL6
2 1/2	EL7
3	EL8
3 1/2	EL9
4	EL10

### 90° Female

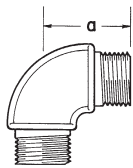
Size	Cat. #
1/2	EL19*
3/4	EL29*
1	EL39*
1 1/4	EL49*
1 1/2	EL59*
2	EL69*
2 1/2	EL79

### 90° Male and Female

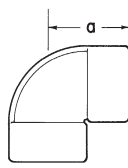
Size	Cat. #
1/2	EL196*
3/4	EL296*
1	EL396*
1 1/4	EL496

\*Available in copper free aluminum – add suffix SA to catalog number.

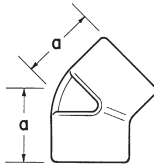
## Dimensions In Inches:



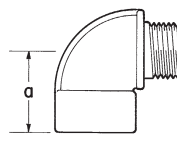
90° Male



90° Female



45° Female



90° Male and female

EL

## UNA

Male Size	Length	Width
1/2	4 <sup>5</sup> / <sub>16</sub>	2 <sup>5</sup> / <sub>8</sub>
3/4	4 <sup>13</sup> / <sub>16</sub>	2 <sup>7</sup> / <sub>8</sub>
1	5 <sup>1</sup> / <sub>16</sub>	3 <sup>1</sup> / <sub>2</sub>

## EL

Size	45° Female	90° Male	90° Female	90° Male & Female
	a	a	a	a
1/2	1 <sup>3</sup> / <sub>16</sub>	1 <sup>7</sup> / <sub>16</sub>	1 <sup>17</sup> / <sub>32</sub>	1 <sup>17</sup> / <sub>32</sub>
3/4	1 <sup>3</sup> / <sub>8</sub>	1 <sup>5</sup> / <sub>8</sub>	1 <sup>3</sup> / <sub>4</sub>	1 <sup>5</sup> / <sub>8</sub>
1	1 <sup>21</sup> / <sub>32</sub>	1 <sup>7</sup> / <sub>8</sub>	2	1 <sup>7</sup> / <sub>8</sub>
1 1/4	1 <sup>3</sup> / <sub>4</sub>		2 <sup>1</sup> / <sub>4</sub>	2 <sup>1</sup> / <sub>8</sub>
1 1/2	1 <sup>15</sup> / <sub>16</sub>		4	
2	2 <sup>1</sup> / <sub>4</sub>		5	
2 1/2	2 <sup>3</sup> / <sub>4</sub>		6 <sup>7</sup> / <sub>16</sub>	
3	3 <sup>1</sup> / <sub>8</sub>			
3 1/2	3 <sup>7</sup> / <sub>16</sub>			
4	3 <sup>5</sup> / <sub>8</sub>			

†See compliances for classification of each product.

# 5F Unions and Elbows

Cl. I, Div. 1 & 2, Groups A, B, C, D†  
 Cl. II, Div. 1, Groups E, F, G  
 Cl. II, Div. 2, Groups F, G  
 Cl. III  
 Explosionproof  
 Dust-Ignitionproof

5F

## Applications:

UNY and UNF unions are installed in threaded thickwall conduit systems:

- UNY – to connect conduit to a conduit fitting, junction box or device enclosure
- UNF – to connect conduit to conduit, or to provide a means for future modification of the conduit system

UNA unions are used in conduit and fitting installations when entrance angle is between 90° and 180°.

EL elbows are installed in conduit run or in box or fitting hub:

- To change direction in threaded rigid conduit run by 90°, or when terminating at a box or fitting

## Features:

UNY, UNF and UNL unions have:

- Compact design which permits assembly with a minimum of clearance to other adjacent conduit and/or equipment
- Strong and durable construction

UNA unions:

- Have a single clamping nut on angle, making it both a union and a connector
- Permit conduit joints at angles between 90° and 180°

EL elbows have a smooth interior and are both strong and compact.

## Certifications and Complies:

<ul style="list-style-type: none"> <li>• NEC/CEC:</li> </ul> <p>Class I, Division 1 &amp; 2, Groups A, B, C, D                  Class II, Division 1, Groups E, F, G                  Class II, Division 2, Groups F, G                  Class III                  EL ½", ¾", 1"                  UNF/UNY 105, -215, -205, -305                  UNL 105, -125, -215, -205</p>
<p>Class I, Division 1 &amp; 2, Groups B, C, D                  Class II, Division 1, Groups E, F, G                  Class II, Division 2, Groups F, G                  Class III                  UNF/UNY406, -506,                  -606, -706, -806,                  -905, -1005</p>
<p>Class I, Division 1 &amp; 2, Groups C, D                  Class II, Division 1, Groups E, F, G                  Class II, Division 2, Groups F, G                  Class III                  EL, UNF, UNL, UNY - all sizes</p>
<p>Class I, Division 1 &amp; 2, Group D                  Class II, Division 1, Groups E, F, G                  Class II, Division 2, Groups F, G                  Class III                  UNA</p>

- UL Standard: 1203
- CSA Standard: C22.2 No. 30

†See compliances for classification of each product.

## Standard Materials:

- UNY, UNF unions – ½" to 1" – steel
- UNY, UNF unions – 1¼" to 6" – *Feraloy*® iron alloy
- UNL, UNA unions – *Feraloy* iron alloy
- EL elbows – *Feraloy* iron alloy or ductile iron

## Standard Finishes:

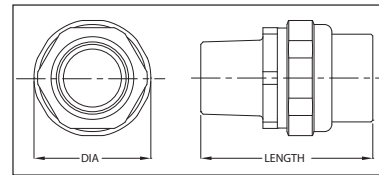
- Steel – electrogalvanized with chromate treatment
- *Feraloy* iron alloy, malleable iron – electrogalvanized and aluminum acrylic paint

## Options:

**Description**  
 Copper-free aluminum  
 Not available on UNA or 5" and 6" UNY/UNF

**Suffix SA**

## UNY



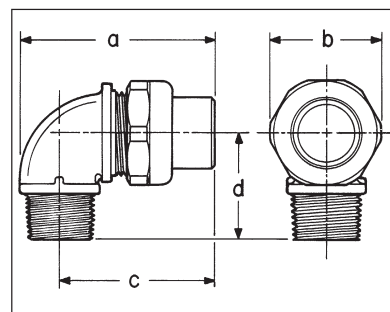
## UNL



## 90° Angle

Size	Cat. #
½ to ½	UNL105
¾ female to ½ male	UNL125
½ female to ¾ male	UNL215
¾ to ¾	UNL205

## Dimensions In Inches:



Size	Cat. #	Size	Cat. #
½	UNY105	½	UNF105
½ female to ¾ male	UNY215	¾ to ½	UNF215
¾	UNY205	¾	UNF205
1	UNY305	1	UNF305
1¼	UNY405	1¼	UNF405
1¼	UNY406	1¼	UNF406
1½	UNY505	1½	UNF505
1½	UNY506	1½	UNF506
2	UNY605	2	UNF605
2	UNY606	2	UNF606
2½	UNY705	2½	UNF705
2½	UNY706	2½	UNF706
3	UNY805	3	UNF805
3	UNY806	3	UNF806
3½	UNY905	3½	UNF905
4	UNY1005	4	UNF1005
5	UNY012	5	UNF012
6	UNY014	6	UNF014

UNY			UNF		
Size	Length	Max. Dia.	Length	Max. Dia.	
½	2 <sup>5</sup> / <sub>16</sub>	1½	1 <sup>13</sup> / <sub>16</sub>	1½	
¾ - ½	2 <sup>11</sup> / <sub>16</sub>	1 <sup>13</sup> / <sub>16</sub>	1¾	1 <sup>13</sup> / <sub>16</sub>	
¾	2 <sup>11</sup> / <sub>16</sub>	1 <sup>13</sup> / <sub>16</sub>	1¾	1 <sup>13</sup> / <sub>16</sub>	
1	3	1 <sup>7</sup> / <sub>8</sub>	2	1 <sup>7</sup> / <sub>8</sub>	
1¼	3 <sup>1</sup> / <sub>16</sub>	2¾	2¼	2¾	
1½	4¼	3 <sup>1</sup> / <sub>16</sub>	2 <sup>5</sup> / <sub>8</sub>	3 <sup>1</sup> / <sub>16</sub>	
2	4¼	3 <sup>13</sup> / <sub>16</sub>	2 <sup>9</sup> / <sub>16</sub>	3 <sup>13</sup> / <sub>16</sub>	
2½	5 <sup>7</sup> / <sub>16</sub>	4 <sup>5</sup> / <sub>16</sub>	3 <sup>3</sup> / <sub>16</sub>	4 <sup>5</sup> / <sub>16</sub>	
3	5¾	5 <sup>1</sup> / <sub>16</sub>	3 <sup>7</sup> / <sub>16</sub>	5 <sup>1</sup> / <sub>16</sub>	
3½	6½	5 <sup>11</sup> / <sub>16</sub>	4 <sup>7</sup> / <sub>8</sub>	5 <sup>11</sup> / <sub>16</sub>	
4	6 <sup>5</sup> / <sub>8</sub>	6 <sup>3</sup> / <sub>16</sub>	4 <sup>7</sup> / <sub>8</sub>	6 <sup>3</sup> / <sub>16</sub>	
5	6 <sup>1</sup> / <sub>8</sub>	8 <sup>3</sup> / <sub>16</sub>	3 <sup>13</sup> / <sub>16</sub>	8 <sup>3</sup> / <sub>16</sub>	
6	6 <sup>1</sup> / <sub>8</sub>	9 <sup>5</sup> / <sub>16</sub>	3 <sup>13</sup> / <sub>16</sub>	9 <sup>5</sup> / <sub>16</sub>	

UNL				
Dim.	105	125	215	205
a	2 <sup>11</sup> / <sub>16</sub>	2 <sup>11</sup> / <sub>16</sub>	2 <sup>7</sup> / <sub>8</sub>	2 <sup>7</sup> / <sub>8</sub>
b	1 <sup>17</sup> / <sub>32</sub>	1 <sup>13</sup> / <sub>16</sub>	1 <sup>13</sup> / <sub>16</sub>	1 <sup>13</sup> / <sub>16</sub>
c	2 <sup>1</sup> / <sub>16</sub>	2 <sup>1</sup> / <sub>16</sub>	2 <sup>1</sup> / <sub>4</sub>	2 <sup>1</sup> / <sub>4</sub>
d	1 <sup>7</sup> / <sub>16</sub>	1 <sup>7</sup> / <sub>16</sub>	1 <sup>5</sup> / <sub>8</sub>	1 <sup>5</sup> / <sub>8</sub>

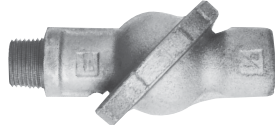
# Unions and Elbows

Cl. I, Div. 1 & 2, Groups C, D†  
 Cl. II, Div. 1, Groups E, F, G  
 Cl. II, Div. 2, Groups F, G  
 Cl. III

Explosionproof  
 Dust-Ignitionproof

**5F**

## UNA



Male (with removable nipple)

Male Size	Cat. #
1/2	UNA16
3/4	UNA26
1	UNA36

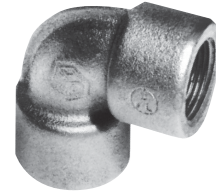
## EL



90° Male



45° Female



90° Female



90° Male and female

### 90° Male

Size	Cat. #
1/2	EL195
3/4	EL295
1	EL395

### 45° Female

Size	Cat. #
1/2	EL1
3/4	EL2
1	EL3
1 1/4	EL4
1 1/2	EL5
2	EL6
2 1/2	EL7
3	EL8
3 1/2	EL9
4	EL10

### 90° Female

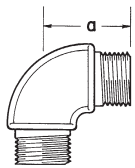
Size	Cat. #
1/2	EL19*
3/4	EL29*
1	EL39*
1 1/4	EL49*
1 1/2	EL59*
2	EL69*
2 1/2	EL79

### 90° Male and Female

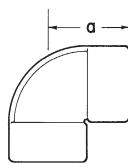
Size	Cat. #
1/2	EL196*
3/4	EL296*
1	EL396*
1 1/4	EL496

\*Available in copper free aluminum – add suffix SA to catalog number.

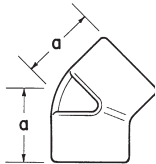
## Dimensions In Inches:



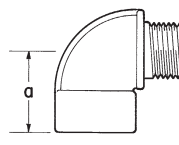
90° Male



90° Female



45° Female



90° Male and female

EL

## UNA

### Male

Size	Length	Width
1/2	4 <sup>5</sup> / <sub>16</sub>	2 <sup>5</sup> / <sub>8</sub>
3/4	4 <sup>13</sup> / <sub>16</sub>	2 <sup>7</sup> / <sub>8</sub>
1	5 <sup>1</sup> / <sub>16</sub>	3 <sup>1</sup> / <sub>2</sub>

## EL

Size	45° Female	90° Male	90° Female	90° Male & Female
	a	a	a	a
1/2	1 <sup>3</sup> / <sub>16</sub>	1 <sup>7</sup> / <sub>16</sub>	1 <sup>17</sup> / <sub>32</sub>	1 <sup>17</sup> / <sub>32</sub>
3/4	1 <sup>3</sup> / <sub>8</sub>	1 <sup>5</sup> / <sub>8</sub>	1 <sup>3</sup> / <sub>4</sub>	1 <sup>5</sup> / <sub>8</sub>
1	1 <sup>21</sup> / <sub>32</sub>	1 <sup>7</sup> / <sub>8</sub>	2	1 <sup>7</sup> / <sub>8</sub>
1 1/4	1 <sup>3</sup> / <sub>4</sub>		2 <sup>1</sup> / <sub>4</sub>	2 <sup>1</sup> / <sub>8</sub>
1 1/2	1 <sup>15</sup> / <sub>16</sub>		4	
2	2 <sup>1</sup> / <sub>4</sub>		5	
2 1/2	2 <sup>3</sup> / <sub>4</sub>		6 <sup>7</sup> / <sub>16</sub>	
3	3 <sup>1</sup> / <sub>8</sub>			
3 1/2	3 <sup>7</sup> / <sub>16</sub>			
4	3 <sup>5</sup> / <sub>8</sub>			

†See compliances for classification of each product.