

# VuLite®

# 6" IC NEW CONSTRUCTION HOUSING

## INCANDESCENT LAMPS

### V6IC W

Project: \_\_\_\_\_

Fixture Type: \_\_\_\_\_

Location: \_\_\_\_\_

Contact/Phone: \_\_\_\_\_

## PRODUCT DESCRIPTION

IC Air-Loc® Housing • Energy efficient, sealed housing • Can be completely covered with insulation • When used with Air-Loc Gasket (see accessories), stops infiltration and exfiltration of air, reducing heating and cooling costs • Trims shown with Air-Loc symbol **AIRLOC** do not require a gasket.

## PRODUCT SPECIFICATIONS

**Lamp** Lamp ratings based on trim selected—see reverse.

**Socket** Medium base porcelain socket with nickel-plated copper screw shell • Adjustable socket plate and detachable socket with snap-in springs to accommodate various lamp and trim combinations • Shipped with socket cap to protect against paint overspray.

**Trims** Trim selection shown on reverse.

**Labels** UL/cUL listed for through-branch wiring, damp locations and IP • Product thermally protected against improper use of lamps • UL/cUL Listed • Trims V3040N and V3041 are wet location approved for covered ceiling applications • Trims V3034 and V3037 are wet location approved for covered ceiling applications, **when used with outdoor rated lamps.**

**Testing** All reports are based on published industry procedures; field performance may differ from laboratory performance.

Specifications subject to change without notice.

## INSTALLATION

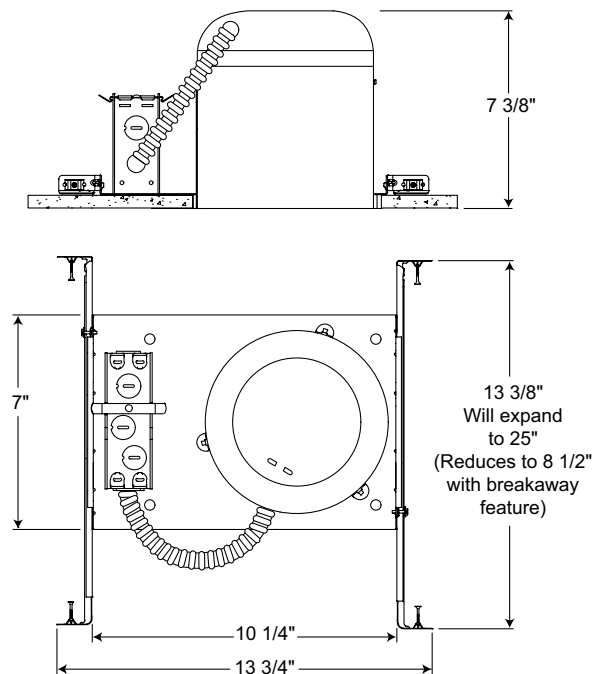
**Bar Hangers** Telescoping bar hangers with captive nail allow for quick placement of housing anywhere within 24" O.C. joists • Can be installed in suspended ceiling grid using T-bar clip accessory • Bars scored in two locations for fast, clean breaking, allowing housing installation in tight applications • Edge-mounted for extra strength and captive to mounting frame • May be installed either perpendicular or parallel to junction box • Locking set screw locks fixture in position • Alternate mounting holes included.

**Junction Box** Pre-wired junction box provided with (5) ½" and (1) ¾" knockouts, (4) Non-metallic sheathed cable connectors and ground wire, UL/cUL listed for through-branch wiring, maximum 8 No. 12 AWG 90° C branch circuit conductors (4 in, 4 out) • Junction box provided with removable access plates • Knockouts equipped with pryout slots • Push-in electrical connectors included.

**Mounting Frame** 24-gauge die-formed galvanized steel mounting frame • Rough-in section (junction box, mounting frame, housing and bar hangers) fully assembled for ease of installation.

**Housing** IC housing, .028" aluminum sealed for Air-Loc Compliance • Housing is vertically adjustable to accommodate up to a 1" ceiling thickness.

## DIMENSIONS



6 1/2" CEILING CUTOUT

## ACCESSORIES

Catalog No.	Description
<b>VALG6</b>	Air-Loc Gasket Kit
<b>G2405</b>	T-Bar Clips (Set of 4)

To order, specify catalog number

## PRODUCT CODES










Catalog No.	Description	Input Voltage	Lamp Rating (max.)
<b>V6IC W</b>	6" Incandescent New Construction IC Housing with push-in electrical connectors	120V	A19/PAR30/PAR30L/BR30/BR40/PAR38 (See reverse for max. trim rating)
<b>V6IC W G</b>	Incandescent New Construction IC Housing with push-in electrical connectors and pre-installed Air-Loc gasket	120V	A19/PAR30/PAR30L/BR30/BR40/PAR38 (See reverse for max. trim rating)

# 6" IC NEW CONSTRUCTION HOUSING

## INCANDESCENT LAMPS

### V6IC W

#### TRIMS/LAMPS

	Cat. No.	Description	Max. Lamp Rating
	<b>V3024 WWH</b> <b>V3024 BWH</b>	Conical White Baffle Conical Black Baffle	50W PAR30, 75W PAR30L, 65W BR30
	<b>V3025 WWH</b> <b>V3025 BWH</b>	Straight White Baffle Straight Black Baffle	50W PAR30, 50W PAR30L, 75W PAR38
	<b>V3034 WWH◆◆</b> <b>V3034 BWH◆◆</b> <b>V3034T WWH◆◆</b> <b>V3034T BWH◆◆</b>	Full White Baffle Full Black Baffle Full White Baffle with Torsion Springs Full Black Baffle with Torsion Springs	40W A19 (white only), 75W PAR30, 75W PAR30L, 65W BR30, 90W BR40, 75W PAR38 (black max.), 90W PAR38 (white only)
	<b>V3027 CWH</b>	Clear Cone	50W PAR30, 75W PAR30L, 65W BR30
	<b>V3037 WWH◆◆</b> <b>V3037T WWH◆◆</b>	Full White Cone Full White Cone with Torsion Springs	40W A19, 75W PAR30, 75W PAR30L 65W BR30, 75W BR40, 90W PAR38
	<b>V3029 WH</b>	White Eyeball	65W BR30, 75W PAR30L
	<b>V3040N PW◆</b>	Stippled Opal Lens Shower with Reflector	30W A19, 35W PAR30
	<b>V3041 PW◆</b>	Drop Opal Lens Shower with Reflector	40W A19
	<b>V3050 WH</b>	Open Frame	65W BR30

Trim Size: 7 $\frac{3}{4}$ " O.D. (except Cat. Nos. V3034N, V3037 - 7 $\frac{5}{8}$ " O.D., Cat. Nos. V3040N, V3041, V3050 - 8" O.D.).

Trim Finish: PW - Plastic White (Polycarbonate material shower trim), WH - White.

Note: In Canada when insulation is present, Type IC fixtures must be used.

◆ UL/cUL Listed for use in wet location.

◆◆ UL/cUL Listed for use in wet location with outdoor rated lamp.

**Air-Loc** Vulite IC housings meet IECC Energy Code requirements per ASTM E283.  
Air-Loc® rated trims are pre-gasketed for minimum air leakage with IC housings.