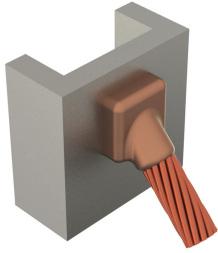
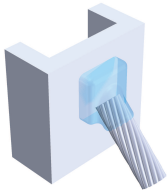


Cable to Steel – VSC1T



ERICO CADWELD graphite molds are designed and engineered for thousands of connection styles and conductor combinations.

- Forms a permanent, low resistance connection
- Provides a molecular bond
- ERICO CADWELD Exothermic Connections are rated with the same current capacity as the conductor
- Portable installation equipment with no external source of power required
- Installers can be easily trained to make ERICO CADWELD Exothermic Connections
- Connections can be visually inspected



| | |
|-----------------------------------|----------------------------------|
| Part Number | VSC1T |
| Mold Family | VS |
| Connects To | Steel Pipe or Flat Surface |
| Conductor Size | #2 Solid |
| Conductor Outer Diameter, Nominal | 0.257" |
| Pipe Size | 24" Min |
| Outer Diameter | 24" Min |
| Kit | No |
| Split Crucible | No |
| Wear Plates | No |
| Mold Only | No |
| Welding Material | 45 or 45PLUSF20, Sold Separately |
| Handle Clamp | L160 and B396, Sold Separately |
| Price Key | C |
| Ease of Use | Preferred |

| | |
|-----------------------------|-------------|
| Part Number | VSC1T |
| Certifications | cULus |
| Standard Packaging Quantity | 1 pc |
| UPC | 78285655729 |

For applications such as computer room, tunnel or other low-ventilation areas, specify a smokeless ERICO CADWELD EXOLON mold. Add an XL prefix to the standard mold part number when ordering (for example, a TAC2Q2Q becomes XLTAC2Q2Q). Similarly, ERICO CADWELD EXOLON welding material is also designated by the XL prefix (for example, 150 becomes XL150).

A gap between conductors may be required. See mold tag for more information.

A test weld should be made to check for the possibility of burn through on thin sections and to determine detrimental metallurgical effects.

UL, UR, cUL, cUR, cULus and cURus are registered certification marks of UL LLC.

WARNING

Pentair products shall be installed and used only as indicated in Pentair's product instruction sheets and training materials. Instruction sheets are available at erico.pentair.com and from your Pentair customer service representative. Improper installation, misuse, misapplication or other failure to completely follow Pentair's instructions and warnings may cause product malfunction, property damage, serious bodily injury and death and/or void your warranty.

© 2017 Pentair All rights reserved

Pentair, CADDY, CADWELD, CRITEC, ERICO, ERIFLEX, ERITECH and LENTON are owned by Pentair or its global affiliates.

All other trademarks are the property of their respective owners. Pentair reserves the right to change specifications without prior notice.