


<b>WGH SERIES</b> GLASS WALLPACKS	Cat.#		 <b>HUBBELL</b> Outdoor Lighting
	Job	Type	
			Approvals

#### INTENDED USAGE

- Perimeter lighting for safety and security. Use on factories, warehouses, self storage, commercial buildings, etc.

#### CONSTRUCTION

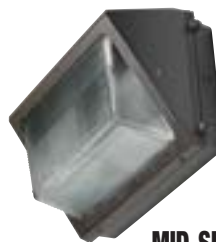
- Borosilicate glass refractor softens lamp image and provides uniform distribution – 4 times spacing to mounting height.
- Cast aluminum frame holds lens and seals to housing gasket with two stainless steel screws.
- Door assembly hinges to side on mid-size units; hinges down on large units
- Cast aluminum housing with 1/2" conduit entries, button photocontrol can be field installed
- All units have dark bronze powder paint finish, Quad-Tap® ballasts and lamps included

#### ELECTRICAL

- WGH mid-size is 150w HPS/PS and 84w CFL; large size handles 250-400w PS and HPS; 150P unit includes medium base lamp; All other HID units include mogul base lamp

#### LISTINGS

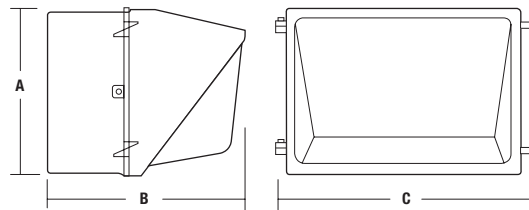
- Listed to UL1598 for use in wet locations



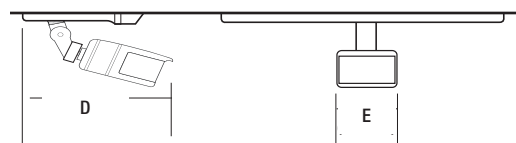
MID-SIZE



LARGE



	A	B	C	D	E
<b>MID-SIZE</b>	9"	7 1/4"	13"	6.5"	2.5"
	229 mm	184 mm	330 mm	165mm	63.5mm
<b>LARGE</b>	9"	13"	17"	-	-
	229 mm	330 mm	432 mm	-	-



#### ORDERING INFORMATION

Catalog Number <sup>1</sup>	Wattage/Source	Voltage	Finish	Weight	
				lbs	kg
MID-SIZE SERIES					
WGH-150P	150w/PS	120, 208, 240, 277V	Bronze	19	8.6
WGH-150S120	150w/HPS	120V	Bronze	15	6.8
LARGE SERIES					
WGH-250P	250w/PS	120, 208, 240, 277V	Bronze	34	15.4
WGH-400P	400w/PS	120, 208, 240, 277V	Bronze	37	16.8

<sup>1</sup> Lamp included on all units.

#### ACCESSORIES

(order as separate part #)

Catalog Number	Description
<b>PBT-1</b>	Photocontrol, 120 volt
<b>PBT-234</b>	Photocontrol, 208, 240, 277 volt
<b>SM106-SHIELD</b>	Polycarbonate Shield for MID-SIZE fixtures
<b>SM106VISOR</b>	Top visor for MID-SIZE fixtures
<b>SM708VISOR</b>	Top visor for LARGE fixtures

#### PHOTOMETRIC REPORTS

Catalog Number	Report #
WGH150S	<b>HP09709.IES</b>
WGH400S	<b>HP09706.IES</b>




**HUBBELL**  
Outdoor Lighting

Hubbell Outdoor Lighting • 701 Millennium Boulevard • Greenville, SC 29607 • Phone: 864-678-1000

Due to our continued efforts to improve our products, product specifications are subject to change without notice.

© 2018 HUBBELL OUTDOOR LIGHTING, All Rights Reserved • For more information visit our website: [www.hubbelloutdoor.com](http://www.hubbelloutdoor.com) • Printed in USA

WGH-SPEC 3/18

<b>WGH SERIES</b> GLASS WALLPACKS	Cat.#		 <b>HUBBELL</b> Outdoor Lighting
	Job	Type	
			Approvals

#### INTENDED USAGE

- Perimeter lighting for safety and security. Use on factories, warehouses, self storage, commercial buildings, etc.

#### CONSTRUCTION

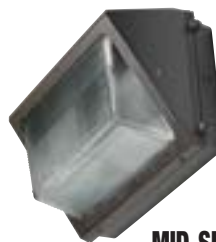
- Borosilicate glass refractor softens lamp image and provides uniform distribution – 4 times spacing to mounting height.
- Cast aluminum frame holds lens and seals to housing gasket with two stainless steel screws.
- Door assembly hinges to side on mid-size units; hinges down on large units
- Cast aluminum housing with 1/2" conduit entries, button photocontrol can be field installed
- All units have dark bronze powder paint finish, Quad-Tap® ballasts and lamps included

#### ELECTRICAL

- WGH mid-size is 150w HPS/PS and 84w CFL; large size handles 250-400w PS and HPS; 150P unit includes medium base lamp; All other HID units include mogul base lamp

#### LISTINGS

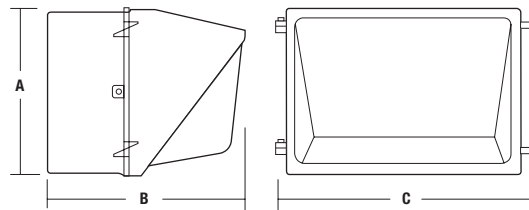
- Listed to UL1598 for use in wet locations



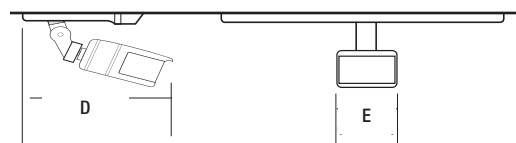
MID-SIZE



LARGE



	A	B	C	D	E
<b>MID-SIZE</b>	9"	7 1/4"	13"	6.5"	2.5"
	229 mm	184 mm	330 mm	165mm	63.5mm
<b>LARGE</b>	9"	13"	17"	-	-
	229 mm	330 mm	432 mm	-	-



#### ORDERING INFORMATION

Catalog Number <sup>1</sup>	Wattage/Source	Voltage	Finish	Weight	
				lbs	kg
MID-SIZE SERIES					
WGH-150P	150w/PS	120, 208, 240, 277V	Bronze	19	8.6
WGH-150S120	150w/HPS	120V	Bronze	15	6.8
LARGE SERIES					
WGH-250P	250w/PS	120, 208, 240, 277V	Bronze	34	15.4
WGH-400P	400w/PS	120, 208, 240, 277V	Bronze	37	16.8

<sup>1</sup> Lamp included on all units.

#### ACCESSORIES

(order as separate part #)

Catalog Number	Description
<b>PBT-1</b>	Photocontrol, 120 volt
<b>PBT-234</b>	Photocontrol, 208, 240, 277 volt
<b>SM106-SHIELD</b>	Polycarbonate Shield for MID-SIZE fixtures
<b>SM106VISOR</b>	Top visor for MID-SIZE fixtures
<b>SM708VISOR</b>	Top visor for LARGE fixtures

#### PHOTOMETRIC REPORTS

Catalog Number	Report #
WGH150S	<b>HP09709.IES</b>
WGH400S	<b>HP09706.IES</b>



**HUBBELL**  
Outdoor Lighting

Hubbell Outdoor Lighting • 701 Millennium Boulevard • Greenville, SC 29607 • Phone: 864-678-1000

Due to our continued efforts to improve our products, product specifications are subject to change without notice.

© 2018 HUBBELL OUTDOOR LIGHTING, All Rights Reserved • For more information visit our website: [www.hubbelloutdoor.com](http://www.hubbelloutdoor.com) • Printed in USA

WGH-SPEC 3/18